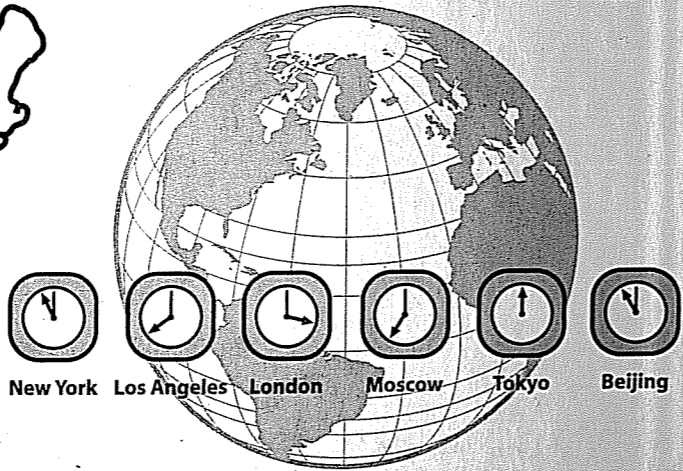
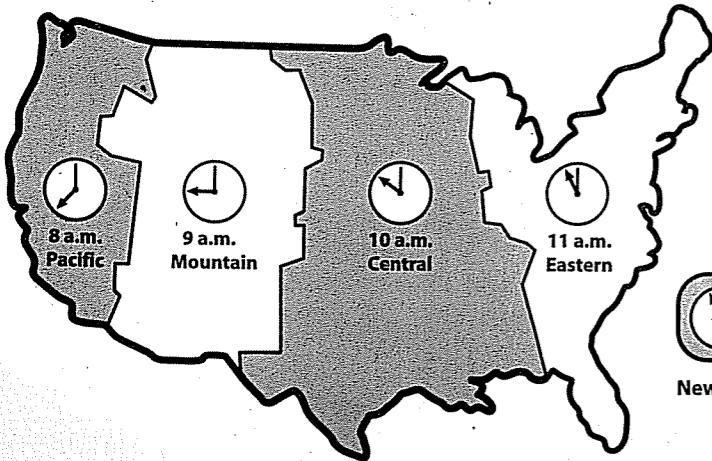


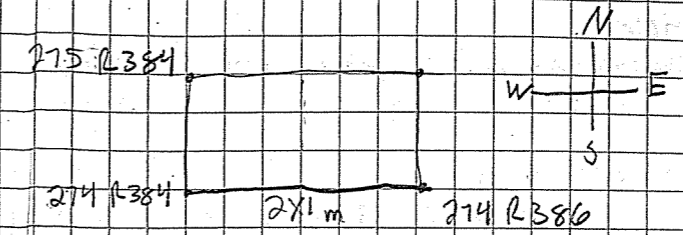
TIME	Monday	Tuesday	Wednesday	Thursday	Friday



5/15/13

Pumpkin Lake

~~274~~ binder



- site named by SW corner
- slip knot
- wrapping inside/outside
- 70cm calcareous zone
- 90-120cm burned A horizon
- Loess-bluffs
- pedogenesis - turning sediment into soil

A - dark, carbon

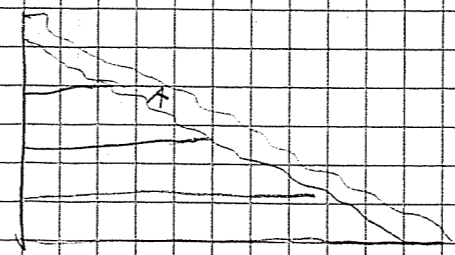
E - acid, All leaching out, gray/white, ashly

Bt - brown clay, subsoil -> undisturbed

C - loess, sediment  
silt

- sand - big, grainy
- silt - fine, little grit
- clay - small particle size, smooth

- 20cm arbitrary levels



- SE corner - highest elevation
- depth, not elevation
- SE corner is depth

- context
- level forms
- each level gets a form/bag

- Filling out bags

- general

- site, level, date, initials

- pumpkin lake (site) → state, county, number in series, 274 R384, Level 1, 5/15/13,

bag #

- Field specimen list ↑

- level 1 ranged from 3.5 - 11 cm

Filled with roots and contained 3 shells and a possible piece of  
lined clay

- Munsell

7.5yr 3/2 → Dark Brown

- Soil texture → Flow chart → silt loam, last word is predominant

loam - equal mixture

- Pictures

Narrow

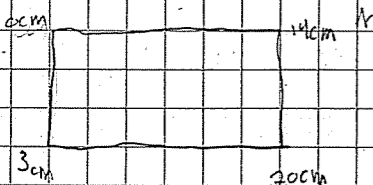
sw corner

- Site notes

- auger hole

- level 2

30 - below datum



5/16/13

Pumpkin Lake

274 R384

→ Level 2

- 11-41 cm (30cm levels) → two bags (5/15 and 5/16)

- pot shells, flakes, rim shells, mised shells, shotgun shell - edge

- standing water in NE corner

- 50 shells, 10-12 flakes

- mucky soil, harder to screen

- Level 3 (41-71 cm)

- very mottled soil - basket loading?

- orange and black soil mixed together

- top layer of level was mucky, but was much drier and easier to

screen at the lower parts of the level

- A large number of pot shells were found in the upper section  
of the level, greater than the amount of shells found in level  
2

- Level 2 cont

- Krotovina - color differentiation due to root activity and soil turbation

- layer 3/4 Dark Yellowish Brown

- layer 3/2 very Dark Grayish Brown (5w)

- Krotovina - layer 4/3 Brown

- Less roots, but ones that were found were larger

- Level 3 cont

- mostly free of roots, easy to dig through

- 70cm bd - bone, charcoal present

5/17/13 Pumpkin Lake 274 R384

- Level 3 - 41-70 cm bd
  - More pottery found in top layer, less in lower sections
  - Pot shards lie in floor of SE corner
  - taking photos of unit in plan view and profile, both with flash and without
  - very overcast day, little sun
  - some roots present in layer, but not a large amount
  - soil is still damp making clean traveling slightly more difficult but not screening
  - Eastern edge is darker, contains charcoal
  - Middle is mottled with red, brown, orange
  - western side has a more brown color
  - Munsell
    - West to east
      - 1 - 10yr 3/2 very dark grayish brown
      - 2 - 5yr 3/4
        - 5yr 2.5/1 → mottled dark reddish brown mixed with black
      - 3 - 10yr 3/2
        - 10yr 2/1 very dark grayish brown mixed with black

- Level 4 70-100 cm bd
  - at 75 cm bd we encountered a pot break - a majority of a pot with incised lines - beautiful artwork.
  - marksville incised \*Ise, wenna\* - Yalina
  - marksville stamped sections - Manning
  - The western side of the unit was dug down to 100 cm and the eastern was kept around 70 cm
  - Down into the A horizon, where artifacts are still being found

5/20/13 Pumpkin Lake 274 R384

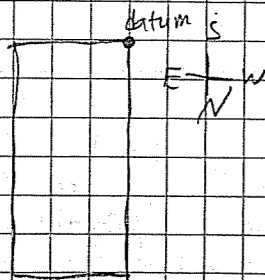
- change to ~~the~~ 1/4 inch screen to screen the A horizon to see if any pottery can be found to date the site before the mound fill was added to the site to date the occupation. The pottery found in the mound fill could have been taken from earlier sites and the pottery could have come from an earlier site, pre-dating occupation?
- Screened four buckets in 1/4 inch and found only a small flake
  - Switched back to 1/2 inch when cleaning up the edge of the profile
- Possible floor on eastern side and eastern profile goes from eastern side to middle of the unit, removed with arbitrary level 4.
- Level 4 removed by first removing the western half and then more carefully
- Augur revealed E then only 5% high clay content - soil undisturbed by human activity
- No features found in level 4
- E horizon - 7.5 yr 3/1 very dark gray
- Buried A - 7.5 yr 2.5/1 Black
- Mound fill - 7.5 yr 4/2 Brown
  - 7.5 yr 5/8 strong Brown

5/21/13

- Pumpkin Lake

- Finished drawing profile and describing soil layers with Munsell numbers and texture from each layer

- Foster  
443 R613



- Level 1

- Grass removed in clumps of sod like brownies and placed in shade.
- Two bags of artifacts collected (big) predominantly found were rocks, glass and some nails 15 1/2, 15 3/4
- thrown dirt
- 1/2 inch screen with a large quantity of artifacts found in the screen
- SW 15cm depth
- SE 12cm
- NE 10cm
- NW 12cm
- Dusky red (2.5YR 3/2) silt loam

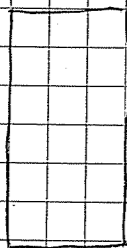
5/22/13

Lessley

# 211 R625

N S

3



- Level 3 40-70 cm bd

- lots of fired earth -> debris associated with buildings, lithics, and unmarked ceramics 10YR 3/4 Dark yellowish brown

- wet soil

- mottled

10YR 3/2 very Dark grayish brown silt loam

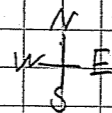
- Level 4 70-100 cm bd

5/15/2013

Pumpkin Lake

- Site Layout

275  
R384



#4 binder

274 R384

2x1m

274 R386

- General

Sites are named by the location of the southwest corner in a coordinate plane. The unit is created by putting down nails at known points and then wrapping orange string inside the nails and tightened with a slip knot. Previous cones of the mound at our unit revealed caliche bone a depth of 70cm and the buried A horizon at a depth of 40-127cm. The layers of sediment are the A horizon, the top layer and is very dark due to its having a large carbon content; the E layer which is ashy and gray or white due to having all of the minerals leaching out; the B/T which is the undisturbed subsoil that is brown clay, and then the C which is loess which has a high angle of repose. When we excavated the unit we took 20cm arbitrary levels to see the stratigraphy. The southeast corner has the highest elevation and depth will be measured as below this point or below datum. Before a level is dug, a level form must be filled out and a bag must be made each day.

- Levels

The first level is the current A horizon and ranged from 5.5 to 11cm and contained many rocks and three pieces of pottery. The Munsell number is 7.5YR 3/2 - Dark Brown. When the pictures of the unit are to be taken, a photo board must be filled out with the site information and a N arrow.

## - Levels

- Levels were changed from 20cm depth to 30cm levels. Level two is from 11-41cm and the artifacts collected in two bags one from S/15 and one from S/16. There was standing water in the site when we arrived on site on S/16 in the northeast corner. Level two contained a total of around fifty pot sherds, rim and incised and 10-12 flakes. The soil was very muddy and much harder to screen. There were less roots in this level than level one and
- Munsell numbers are 10yr 3/4 Dark Yellowish Brown and 10yr 3/2 very Darkish Grayish Brown.
- Level three is from 41-70cm bd and contained very mottled soil primarily orange and black soil. The top layer of soil was very muddy and harder to screen, but the lower sections of the level were much easier to screen. Charcoal and bone were found at 70cm bd, with a majority of pot sherds found in the upper section of the level and a lesser density found in the lower sections.

## - Levels

## - Level 3 41-70cm bd

- More pottery was found in the top layer of the level and less in the lower sections. Large pot sherds are visible in the base of level 3. Roots were present in this site, but not a very large amount. The soil is very damp still which makes clean travelling much more difficult. The soil tends to smear and come off in big chunks. The eastern edge of the unit is much darker and contains charcoal from which samples will be taken. The middle of the level has a much more mottled color than the other sides, and the western edge is a more brown color.

## - Munsell

## - W - 7 E

1 10yr 3/2 very dark grayish brown

2 5yr 3/4 and

5yr 2.5/1 mottled dark reddish brown mixed with black

3 10yr 3/2

10yr 2/1 very dark grayish brown mixed with black

## - Level 4 70-100cm bd

- At 75cm bd we discovered a pot break, a large portion of a pot broken at the site in an event. The mud hides the details of the sherds but reveals some insized lines and it will be very interesting to see what the pot looks like when cleaned - exciting! Vin examined the sherds and said they appeared to be Marksville incised and the Isequeanna phase. To further examine this eastern side of the unit, we kept the level at 75cm bd in this part of the unit and bring the western half of the unit down to 100cm bd before carefully excavating the eastern side. This level included the buried A, where artifacts continued to be found.

5/20/13

## Pumpkin Lake

## - Level 4

In order to examine the eastern side of the unit closely, we switched from  $\frac{1}{2}$ " screens to  $\frac{1}{4}$ " inch and screened four buckets to see if we can find pottery to date the site by finding pottery used at the site (primary) as the mound fill may have been taken from an earlier site than included pottery (secondary). The four buckets yielded little, only a small flake. We decided that the lack of artifacts in the screen did not warrant the increased difficulty and consumption of time thanks to the Mississippi mud and switched back to the  $\frac{1}{2}$ " screen. There is a possible floor on the eastern side of the unit which extends from the eastern profile until the middle of the unit. David augured and found an E layer and then BT, having a high clay content and showing an undisturbed layer of soil. It seemed at first there no features were found in the unit, but there is a possible post hole in the south east corner of the unit.

The Munsell numbers of the layers are:

- E 7.5yr 3/1 very dark gray
- Buried A 7.5yr 2.5/1 black
- Mound fill 7.5yr 4/2 brown and  
7.5yr 5/8 strong brown

After taking Munsell numbers we began to draw profile maps, but did not finish as David wanted to teach us how to use the total stations.

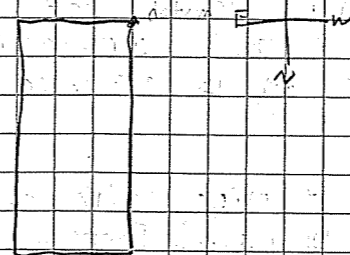
5/21/13 Pumpkin Lake and Foster

## - Pumpkin Lake

We finished drawing the profile maps and then described the textures of the soil layers. We then showed off our unit to George Bates and his cousin before visiting Bates & there we coined a new phrase - pulling a Morgan - falling into a unit (luckily she only injured her finger and nothing worse).

## - Foster

- 443 R 613



## - Level 1

We opened up a new unit at Foster, but we first removed the sod in pieces like braunies and placed them in the shade and then began digging. In our first layer we collected two big bags of rocks, glass, and some nails. David taught me how to throw dirt, but I still need some work on that. The depths of the level is:

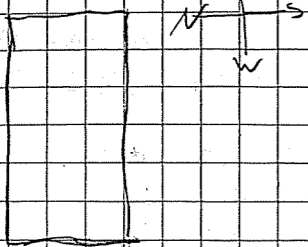
- 15cm bd SW corner
- 12cm bd SE corner
- 10cm bd NE corner
- 10cm bd NW corner

The soil is a silt loam (2.5yr 3/2 dusky red)

5/22/13

Lessley

211R625



I was switched into a new crew working with Andy, Ashley, and Meg. Working with Meg is good too, although there were no pretending to be a dinosaur or climbing up grape vines, but Meg is pretty cool.

- levels

- Level 3 40-70 cm bd

In this level was a lot of fired earth, not ddb, as it is not associated with a building. There were also lithics and ceramics. While clean traveling level 3; Meg showed me how to use a different form of travel - used on walls, and explained why the corners were not cut at a  $90^\circ$  angle (to prevent the mills from coming out due to soil conditions). Also Meg showed me a method of clean traveling wet soil and likened it to cutting butter that fared much better than the traditional method.

- Level 4 70-100 cm bd

A majority of the artifacts were found in the first part of the level and less was found deeper. A piece of historic ceramic was found in this level but was found but was found in the top of the layer and edge of the mound, it was not found deep in the layer.

5/23/13

Lessley

211R625

- Level 4 70-100 cm bd

- level was clean traveled and then photographed

- Level 5 100-130 cm bd

- pot sherds were found but no fired clay and the pot sherds were at a much lower density than the previous level

- looking for the buried A horizon and possible features such as post holes extending into the E

5/23/13 Lessley 211 R025

- Level 4 70-100cm bd
  - After screening the dirt yesterday I clean troweled the unit before pictures were taken. The soil is still wet and mucky making clean trowling and cleaning up the walls more difficult as the soil smears and sticks together.
- Level 5 100-130cm bd
  - In this level pot sherds and lithics were found but no fired clay. The pottery was at a much lower density than the previous level. I screened for artifacts while Ashley removed this layer from the unit. We are removing levels until we reach the buried A horizon in which we hope to see features in the soil extending into the E.

5/24/13 Lessley 211 R025

- Level 6 130-100 bd
  - Finished remaining soil to reach the buried A horizon. A horizon will be screened using 1/4" screen.
  - A horizon found at 152cm bd.
  - walls cleaned and clean trowled for picture.
  - level contained pot sherds and debitage with some burned clay.

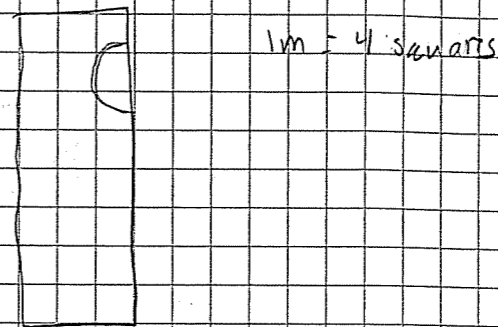


5/24/13 Lessley 211 R025

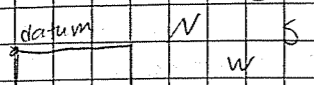
- Level 6 130-160cm bd  
After finishing level 5 and taking pictures of the level we began level 6. We were continuing with 30cm arbitrary levels until we reached a color variation of soil throughout the unit identified as the buried A horizon at approximately 152cm bd. This layer is to be removed and screened with 1/4" mesh screen instead of the 1/2" currently being used. While I was screening the dirt removed from the unit, I switched to cleaning the walls and clean traveling the unit before we took pictures of the uncovered A horizon. The level above the buried A was found ceramics, debitage, and some burned clay. After taking pictures of the unit we covered the unit very well in preparation for the long weekend.

5/28/13 Lessley 211 R025

- Level 6e 155-170cm bd - buried A horizon  
To begin the day I finished the level 5 paperwork with Cashen until the buried A being approximately 155cm bd and Ashley advising a 15cm arbitrary level to remove the A I skimmed the unit taking from all areas of the unit for flotation and two buckets of soil for water screening. After the samples were collected I then began to remove the A horizon when I uncovered an area of fired clay in the eastern side of the unit:



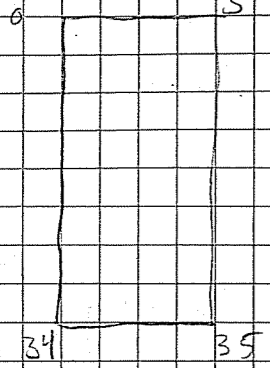
Further excavation of this area revealed a well defined area of burned clay of which Ashley identified as a possible buried floor. Not long after finding this area I switched from digging to screening. Instead of using the 1/4" screen as previously planned we used 1/2" screen. The level contained a much higher concentration of artifacts than the previous level and contained ceramics, lithics, and burned clay. We also took samples of charcoal and bone from the unit, an exciting day of finds! Once Ashley finished digging the level Cashen and I switched from screening to traveling the walls which we did not finish before we ended for the day.



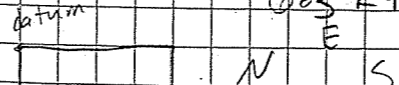
Large root →

sw

- Level 1, A horizon
- 10cm below surface, started

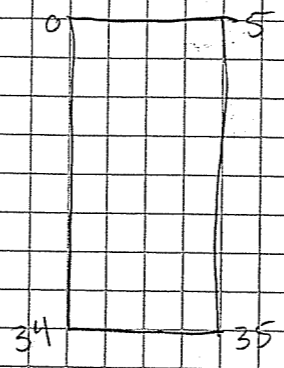


- contained pottery, charcoal, debitage, fired clay, and I found a print while screening!
- mottled brown and orange color
- 7.5 yr 3/4 dark brown and
- 7.5 yr 2.5/2 dark brown
- texture is silt and contained a lot of roots and charcoal



Large root →

- Level 1, A horizon
- 10cm below surface, started



- contained pottery, charcoal, debitage, fired clay, and I found a print while screening! I screened for most of the day, finding a large amount of artifacts, but digging the next level!
- The soil was a mottled mix of brown and orange, 7.5 yr 3/4 dark brown and 7.5 yr 2.5/2 dark brown silt loam
- This level included a large amount of roots including a major root near the NW corner of the unit and charcoal.
- Level 2 10-45 cm bd
- We began this level with me digging; the soil was very difficult to dig through and very hard to screen. The soil is BT fill from another area. I have no idea why Native Americans wanted to build a mound out of this, so tough to get through. Getting through this layer is very time consuming, there is a very distinct difference between the two layers.
- We took Munsells from soil on the floor of level 1, but it makes sense to me to have taken Munsells from the walls to get a better example of the soil coloration due to the large differences in soil colorations.

5/30/13

Bayou Pierre Mound U  
623 R475

- Level 2 (10-45cmbd)
  - BT fill
  - 7.5yr 4/4 mottled with 7.5yr 3/1 very dark gray
  - minimal artifacts
    - lithics and natural soil
  - clay loam
- Level 3 45-70cmbd
  - 10yr 5/3 Brown - mottled

5/30/13

Bayou Pierre Mound U  
623 R475

- Levels
  - 2 (10-45cmbd)
    - This layer was primarily composed of BT mound fill which is difficult to both screen and dig. We finished this level, took pictures, and continued on to the third level. This level was mottled with 7.5yr 4/4 and 7.5yr 3/1 (very dark gray) and contained minimal artifacts, mostly lithics, as it was mostly composed of sterile BT fill. The texture of this soil is clayey loam.
  - 3 (45-70cmbd)
    - After finishing level two early in our day we began on our third level. I spent most of my time screening the soil with Emily while Andy dug as it took two people to get the soil through the screen as it formed clay balls that were difficult to push through the screen. As we reached the end of the level the soil began to change color, became easier to screen, and contained more artifacts. After leveling off the level, Emily and I cleaned off the walls, then she clean trowled the floor while I screened what she traveled away. The level was a mixture of the clayey loam soil in the previous level mottled with 10yr 5/3 (brown). Then we took pictures and left early for our field trip to the Grand Village of the Katchez Indians. -? field trips are always cool since we get to see how prehistoric people lived and get to see and walk on the mounds they built (even though were on mounds all day, these we know about and learning about their culture is fun).

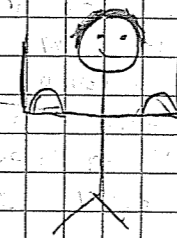
5/31/13

Lab day with Mallory

-In the morning Mallory and I waterscreened. I did the samples from Pumpkin Lake since Pumpkin Lake is awesome and Mallory did all the rest. I didn't think I would get all that dirty since I wasn't going to be in the field. I was wrong. Nothing in archaeology is clean, its all dirty. Never trust a clean archaeologist. I think water screening made me the dirtiest I've ever been. It was fun though. Since I only had one context I worked until the end to clean the bottom screen while Mallory had to change hers several times. As I didn't clean the bottom screen until the very end it filled up, but I was able to blast holes in the dirt until Mallory and I cleaned the bottom screen when I finished all of the Pumpkin Lake buckets. Pretty much the entire screen was filled with dirt that we peeled off in bricks. This was when Mallory and I ended up spraying ourselves with dirt and ended up with dirt all over our faces.

After lunch we washed some artifacts, but as we didn't have anywhere to put the artifacts to dry, Mallory taught me to rough sort the artifacts. Rough sorting is very interesting and challenges you to identify what the artifacts actually are and sort them into categories. Determining between diagnostic ceramics and non-diagnostic ceramics, but determining between lithics and pebbles is the most difficult. This part of lab work was very interesting.

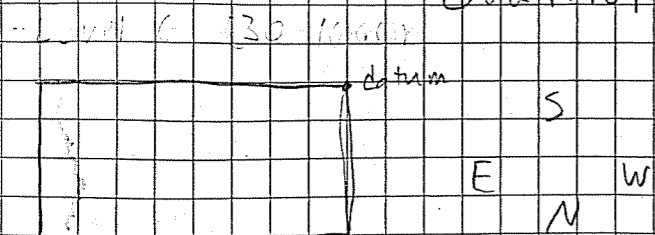
Paveety: Paint = best field trip ever!!!



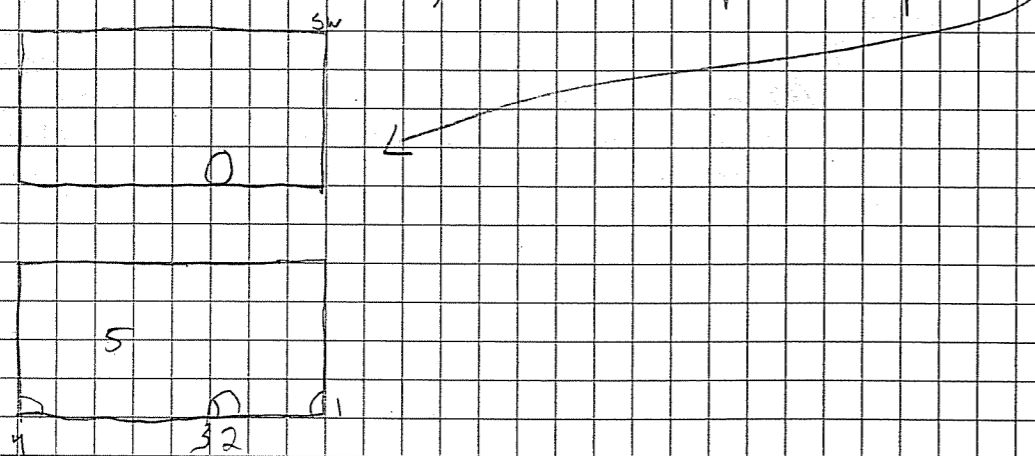
Getting mad muscles from archaeology.

Anyone for an archaeology olympics?  
Archery, target competition, tool carrying relay  
and bucket lifting competitions included.

6/3/13

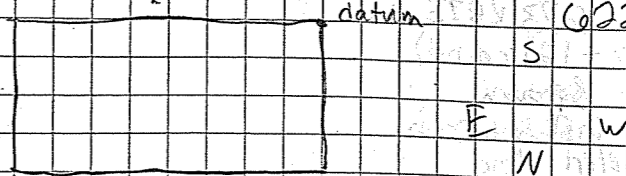
Bayou Pierre mound D  
622 R487

- Level G 130-160cm bd
- I collected water screening samples (9) of possible midden from 130-140cm bd.
- Then I dug part of the unit down to the 160cm unit I then switched to help Cashen screen while David dug. The soil was wet from rain over the weekend and thus was easy to dig, but hard to screen. The artifacts found in this section of the unit were not numerous but include ceramics and lithics. Also found in this level were charcoal and calcine bone.
- This unit has a continuous line around the unit at 1mbd. This line may represent a break or change in the building of the mound. This line is a very interesting break in the stratigraphy from a brown color to the orange line and then back to brown.
- At the base of level G, there is a possible post hole

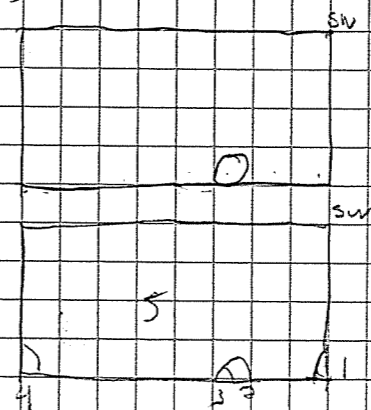


1	7.5yr	3/3	dark brown	clay silt
2	7.5yr	2.5/2	very dark brown	clay
3	7.5yr	2.5/2	very dark brown	clay
4	10yr	4/4	dark yellowish brown	clay
5	10yr	5/4	yellowish brown	clay

6/3/13

Bayou Pierre mound D  
datum 622 R487

- Level G 130-160cm bd
- I took nine water screenings of a possible midden while Cashen created the tags for them and made sure each bucket had a tag both inside and outside. The midden layer was 130-140cm bd.
- After taking water screening samples I took part of the level down to a depth of 160cm. I then switched out with David and helped Cashen screen. It had rained over the weekend and some water had gotten in the unit which made the soil easy to dig through but very difficult to screen as it stuck to the screen. There were numerous artifacts found in this section of the unit including ceramics and lithics and also included in small amounts were charcoal and calcine bone.
- At the base of this level there appears to be a possible post hole which will be excavated after finishing this level.



1	7.5yr	3/3	dark brown	clay silt
2	7.5yr	2.5/2	very dark brown	clay
3	7.5yr	2.5/2	very dark brown	clay
4	10yr	4/4	dark yellowish brown	clay
5	10yr	5/4	yellowish brown	clay

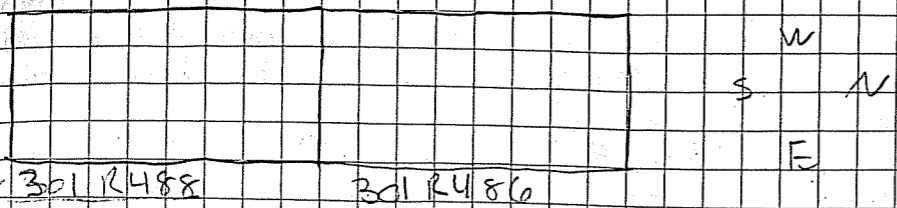
- This unit has a continuous line around the unit at 1mbd. It seems to me that may represent a break or change in the building of the mound. I was not working at this unit when it was excavated so I cannot say if the artifacts suggest a living surface, but it is a very interesting break in the stratigraphy from a brown, then orange color, and then back to brown.

6/14/13 Bayou Pierre Mound D  
623 R975

- Level 5 (100 - 121 cm bd)
- 7.5yr 4/2 brown
- 7.5yr 3/3 dark brown
- Clean traveled the walls and floor
- pictures

6/14/13 Bayou Pierre Mound D  
623 R975

- Level 5 (100 - 121 cm bd)
- I switched back to this unit where I clean traveled and the walls cleaned with Mallery. We finished the paper work, took pictures and then began mapping.
- Light mottle of 7.5yr 4/2 brown with 7.5yr 3/3 dark brown
- when mapping each of the walls Mallery recorded the points and created the traps while I measured each layer. When I mapped at Pumpkin Lake I measured each level all the way across from 0cm - 200cm and then continue with subsequent layers, but what Mallery and I found worked much better was to give a measurement for each level at each of the 20cm intervals. After finishing mapping unit 623 R975, I then moved over and mapped the north profile wall with Morgan M unit 622 R981. In this unit I created the map while Morgan measured each level. We only managed to finish the north profile wall before it was time to pack up.



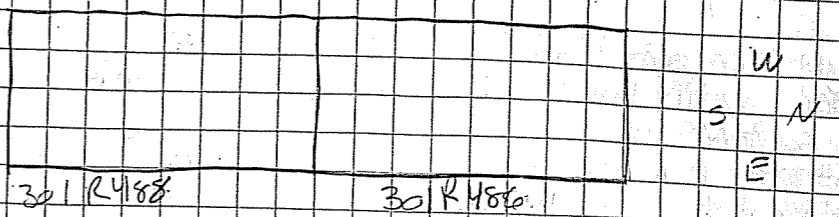
- Unit 301 R 488

- I helped Joel with finishing the paperwork for level 1 and screened the dirt from clean traveling

- Unit 301 R 486

- Screened the dirt with Kelly while Kelly dug using 1/4" inch screen. We are finding primarily small lithics and a few sherds of pottery, but no historic. The screening is much slower than the shoveling as we had to pick out all of the tiny flakes and lithics.

- After lunch we switched to 1/2" screening as we were past the A (1/4" was only for A). We found a large quantity of lithics but almost no pot sherds. We have also not found any historic as in the previous level, indicating that we are in a prehistoric layer.



- Units

- 301 R 488

- First I screened dirt from the clean traveling of the last level that had been finished the day before except for pictures level 1, and I helped Joel finish up the paperwork

- 301 R 486

- Kelly W and I screened using 1/4" mesh while the others Kelly dug. The artifacts found are primarily small lithics and some sherds of pottery. The screening was incredibly slow due to the smaller screen and the shoveling was much faster and we often got backed up and ran out of buckets. The screening took a lot of time also due to having to pick out the tiniest of flakes from the screen.

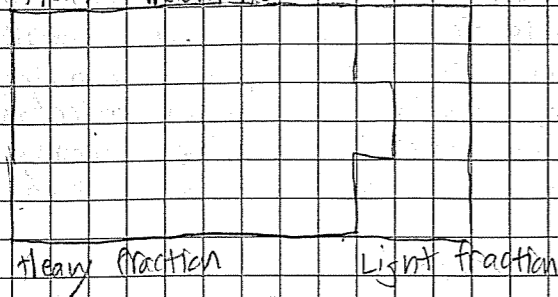
- After lunch, Kelly E switched to digging/screening 301 R 488 which left Kelly W digging and me screening. We screened with 1/2" instead of 1/4" as we had gotten through the buried A. We found an immense number of lithics fill up a large bag, ~3/4 full of all or almost all lithics. Due to us not finding any historic artifacts it seems likely that we are out of the historic level, but the large number of lithics and no ceramics is interesting. Possibly this was a site where someone or a group of people were flint knapping. The incredible number of lithics seemed strange to everyone as we believed that we had reached the B, but it was nowhere near sterile like it was assumed it would be.

6/6/13

## Lab day with Mallory and Ben

- Mallory taught Ben and I to use the float machine which I used until lunch while Ben waterscreened. After lunch we switched and I water screened while he floated. Floating isn't too bad, but it can get kinda boring. In most of the different contexts very little was found in the light fractions, more was found in the heavy fractions. Maybe plant material did not preserve well in this soil or very little ever existed, or maybe little was buried so little was preserved. It is also possible that little plant material was found on the mound, some sites are well known for feasting but we know little about these sites so we don't know what they were used for.

Float machine:



When water screening I did the lake Pulmouin Lake context with eight buckets and then another context of two buckets. While not a very exciting day, we managed to get through a good deal of buckets so they can be used back out in the field. Lab work isn't bad at all but I swear that I always end up much dirtier than in the field.

Every site is better with a site dog,  
especially if its a puppy.

We're so cool we use a trampoline as headwaters  
at SMITH creek.



6/7/13

Bayou Pierre Mound B  
301R486 and 301R488

- Profile mapping

- Joel measured while I recorded

- Created the profile maps for both units and recorded Munsell numbers and textures before covering up the unit and helping Max equipment strips and shelter back to the suburban to be picked up at a later time.

6/7/13

Bayou Pierre Mound B  
301R486 and 301R488

- Profile mapping

- Joel and I profile mapped the two connected units at mound B. He took the measurements while I recorded the measurements and created the maps. Although time consuming, creating these maps made for an easy day in the field. After taking depth measurements, I recorded the Munsell numbers and soil texture and added them to the map.

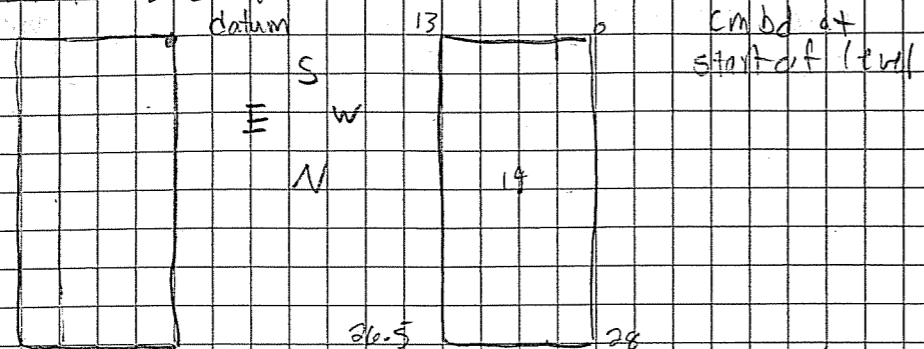
- Cleaning

- After Joel and I finished our profile maps, we began to clean up the site of all equipment since we were finished with most of the units there. We carried the screens and trowels to the suburban before we took down the shelter and began packing up the shovels and tools.

- Level 1

- Dark soil with lots of roots present. The artifacts found in this level include a piece of historic farm equipment, many pot sherds, mostly non-diagnostic, but one incised that may be a rim sherd (possibly a Cole's Creek sherd) and bone likely deer - one complete bone and one fragment with the complete bone being at the top of the level so it seems likely, along with the condition of the bone, that this bone is a very recent addition.

- The lack of flakes and lithics is interesting as only one has been found so far.



- Overall the site is similar to Feltus to the site layout. There is a mound with a moat, the largest mound overlooks a bluff, and there is a plaza between them all.

- Locm level

- Level 2

- Starting a 30cm level
- Found a lot of pot sherds, the pieces are larger in this level than the previous, though mostly non-diagnostic
- increased presence of flakes

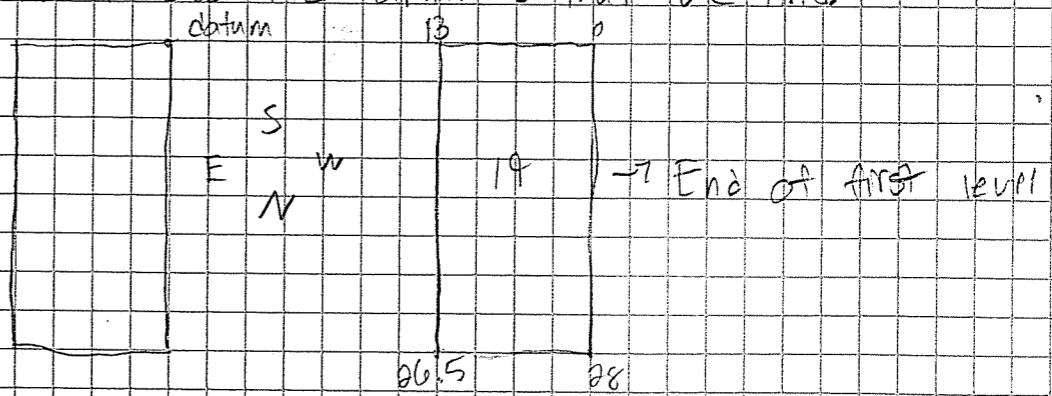
- Level 1 (locm)

- Today Kelly, E. Morgan, and I started a new unit. Morgan and I were screening while Kelly dug. Since we were cutting through the current A horizon there were a lot of roots which made both digging and screening difficult. The artifacts found in this level include historic metal fragments and pot sherds - largely non-diagnostic but one I think may be Cole's Creek from what we've learned in lab, it is a rim sherd. The lack of flakes and lithics is very interesting to me as only one has been found. Perhaps these ceramics come from original deposits that did not contain a lot of flake or sherdage was located in a different place than ceramics, such as an area where lithics were produced. A piece of bone was also found, but as it was found at the top of the level and shows little decay position it does not seem to have been there for very long and must have been recently deposited.

- Level 2

- we began a second level (30cm) after cleaning and photographing the first. We found a lot of pot sherds, larger in this level - larger pieces suggest a primary deposit, but it is too soon to tell. Also more flakes were found in this level than the first.

- This site is similar to Feltus with a similar layout. It has a mound with a moat, the largest mound overlooks a bluff, and there is a plaza in between with a similar layout, it makes sense to hypothesize that they were occupied at the same time, but we will have to see the artifacts that we find.

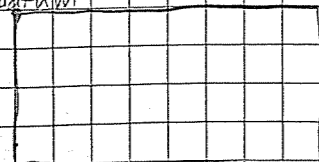


6/11/13

Smith Plaza

Creek 1049 R597

datum



- Level 4 (85-115cm bl)

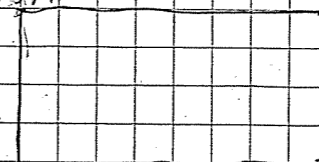
- Ashley dug while Andy and I screened it.
- The dirt was wet and hard to get through the screen plus the screen was in direct sunlight meaning sweat poured off of us as if we were in a sauna. It's basically the same as a day in the sun with the heat, sweat, and mud.
- The dirt was a dark midden, homogenous throughout and including a lot of pottery, but were covered in mud and could not be cleaned off. Taken from this level was an almost full large bag, mostly pottery.
- After lunch I clean troweled the floor which was cooler since it was not in direct sunlight, but since the soil was wet, the trowel took off more than desired as it sliced through the soil. Also there were a lot of crumbles resulting from each cut which were very hard to remove. Although I did the best I could, I could not get all the crumbles off the floor.
- The soil is totally black and homogenous throughout with one layer approximately halfway down that is a yellowish color and seems to be level and present on the four walls.

6/11/13

Smith Plaza

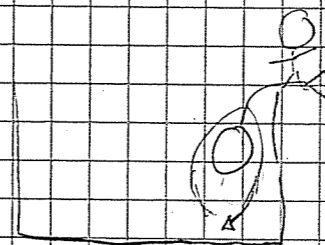
Creek 1049 R597

datum



- Level 4 (85-115cm bl)

- I was transferred to this unit where Ashley dug and Andy and I screened. As it had recently rained, the soil was wet and difficult to push through the screen. The screen was in direct sunlight making screening very difficult. We joked about it being a spa day with the heat, sweat, and mud.
- The soil we dug through was from a midden - very dark soil. The soil contained a lot of sherds, but are very muddy so it is hard to tell if any are diagnostic. From this level we collected almost a full bag of pottery (a large majority was pottery). The soil is homogenous showing little stratigraphy, but the soil is muddy making it hard to see.
- After lunch I clean troweled the floor which was nice in that I was no longer in direct sunlight, but it was difficult as the soil was wet and came off in larger than desired sections. It was hard to get up all the loose "crumbles" since it was so wet, but I did the best I could.



Ashley sitting on Andy's butt so he can clean trowel the last bit of the unit.

6/12/13

Smith Creek  
Plaza 1044RS97

- Level 5 (115-135 cm bd)
- Emily dug while I screened then I cleaned the walls and clean trowled while Emily screened the remaining.
- We corer one section of the unit and it showed that we were in the B<sub>+</sub> with the E being 17cm below this level.
- Our next step is to finish this level and then do about a 15-17cm level and see if we can find any features on the E we do not see any evidence of features in this level.
- The number of artifacts in this level has dropped compared to level 4 and was comprised mostly of pot sherds; but we too muddy to tell if they were diagnostic or non diagnostic.
- The soil is much drier and easier to screen.

6/12/13

Smith Creek  
Plaza 1044RS97

- Level 5 (115-135 cm bd)
- Emily and I worked at this unit today with her doing the digging and me screening (seems to have become a pattern). With Meg's help we corer one section of the unit showing that we were in the B<sub>+</sub> with the E being ~17cm below this level. We then began a new level (level 6) 15cm to see if we can find any features on the E. So far we do not see any evidence of features.
- The concentration of artifacts has dropped off greatly, but was still pot sherds coated in mud. The soil is much drier and easier to screen.
- I clean trowled the walls and floor and Meg came and helped us finish the last part since it was too deep to do what Andy and Ashley did yesterday. Meg showed us to use a knee pad to stand on and take out shoes off and clean trowel in our socks and then clean trowel the imprint of the knee pad away leaving only little sock prints in core corner.
- Level 6 (135-150 cm bd)
- Emily dug while I screened and we almost finished this level before having to pack up. The next step is to clean the walls and clean trowel the floor. The artifact concentration has dropped off even more as expected as we expect the E to be sterile.

6/13/13

Bayou Pierre  
Trench

6/13/13

Bayou Pierre  
Trench

- Trench

- while Ashley filled buckets for water screen and flotation samples from a midden layer I made the tags for the samples. I did this most of the morning before Ashley finished taking samples and I went to help Emily and Ben fill in the 4X1 unit we were able to finish filling in the unit and after lunch we worked on stabilizing Ashley's trench with sandbags and plywood.

- After we finished stabilizing the trench we drove back to the shelter where I rinsed off the shovels and rakes and laid them in the sun to dry. Then Ben and Ashley were oiling them to prevent them from rusting. After that Ben washed buckets and I placed them on the concrete next to the shelter to dry.

- The backfilling of a unit is a sad, but fulfilling process.

6/14/13

Smith Creek  
1077R027

- Level 5

- Kelly and I screened buckets that Ashley dug. We didn't stay long but found ceramics, tinics, and what I believe to be bone - needs to be washed.

1044R597

- Profile mapping

A	10yr	3/1	very dark gray	silty loam	A horizon
B	10yr	2/1	Black	silty clay	
C1	10yr	3/4	Dark yellowish brown	Sandy	lightly mottled with 2/1
C2	10yr	3/2	Very dark grayish brown	silt, fired clay	
D	10yr	4/3	Brown	silt	
E	10yr	2/2	Very dark brown	sandy loam	
F1	10yr	2/1	Black	silt	
F2	10yr	2/2	Very dark brown	silt	
G	10yr	3/3	Dark brown	silt	

6/14/13

Smith Creek  
1077R027 and 1044R597

- Level 5 (1077R027)

- Kelly W and I screened while Ashley dug. While finding a mix of all artifacts, we were only there for a short time as Mike and David were cutting the different strata in 1044R597 and once they finished, Kelly and I went there to profile map.

- 1044R597

- Kelly and I each mapped one short and one long wall. I measured for the W and F walls and mapped the others.

- While I was drawing lines, Kelly would take munsell and texture data so we could be efficient.

A	10yr	3/1	very dark gray	silt
B	10yr	2/1	Black	silty clay
C1	10yr	3/4	Dark yellowish brown	sandy, mottled with 2/1
C2	10yr	3/2	Very dark grayish brown	silt, contains fired clay
D	10yr	4/3	Brown	silt
E	10yr	2/2	Very dark brown	sandy loam
F1	10yr	2/1	Black	silt
F2	10yr	2/2	Very dark brown	silt
G	10yr	3/3	Dark brown	silt

- After mapping the unit, Kelly and I mapped in artifacts in the wall of the unit. I measured and then removed the artifacts after making bags for them.

- I washed the artifacts tonight revealing several pretty diagnostic sherds. I'll make a table of them tomorrow and see if they can tell me what variety they are and when they date.

Last Day Hakin

Dedicated to Meg and David

Digging at the site,

Sweating in the hot sunlight

Great to be alive

David's deepest

and darkest

nightmares

are comprised of...



6/17/13

Smith Creek

- 1049R597

- Finished mapping and pulling artifacts from E and W walls

- 1058R460

- Created labels for waterscreen of feature

- possible pit approximately 135cm<sup>2</sup>

- 1/4" inch screened level 5 (135-100bd)

- 25cm level to reach the E

- screening was laborious and the buckets often got kicked up where David stopped digging to help screen on the second 1/4"

- Soil was muddy and contained lots of little bones and lithics as well as some medium and few large sherds and an arrowhead.

- Excavated feature - float and WS sample

- Buried A WS samples - 4 buckets

- Heavy rain at 2pm - delay

6/17/13

Smith Creek

- 049R597

- I finished mapping and pulling artifacts from this unit. The two "walls left" were the east and west walls. After I finished mapping and bagging the artifacts I joined David in 1058R460.

- 1058R460

- David excavated part of the possible feature and took photographs of the profile after that I removed the second half of the feature as a waterscreen 1/4" sample. The feature was a possible pit located 135cm<sup>2</sup>.

I made the labels for all the samples and then we began our next level of 25cm. While David dug I screened the dirt with 1/4" screen but the screening was difficult as the soil was wet and muddy. David stopped digging at times and screened (put a screen on four overturned buckets). In the screen we found a lot of little bones and lithics with some medium to few large sherds and one arrowhead.

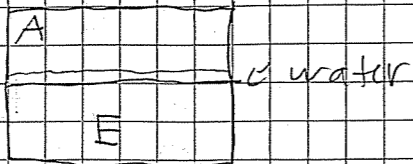
- It rained heavily at 2pm causing us to have to cover up the unit when we had almost finished excavating this level.

6/18/13

Smith Creek  
Mud A  
1058 R400

- Level 5

- 1/2" screen - much easier and faster
- soil is dryer (E)
- possible post hole
- E is slanted and in SE corner the E is deeper than 100cm<sup>bd</sup> and we will extend the level 5cm to 105bd to uncover all of the E (135-105cm<sup>bd</sup>)
- The E was much drier than the A above it, it seems as though the E repels water so then buried A holds water

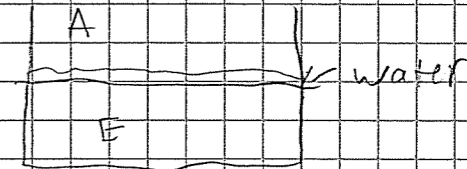


6/18/13

Smith Creek  
Mud A  
1058 R400

- Level 5

- we switched from the 1/4" screen to the 1/2" screen as we were solidly in the E. The screening was much easier as the dirt just fell through the screen without having to be ground into the screen.
- At the bottom of this unit there is a possible post hole which was then excavated out as a waterscreen and a float sample.
- The E is slanted and in the SE corner, the E is deeper than 100cm<sup>bd</sup> and we will extend the level 5cm to uncover all of the E (135-105cm<sup>bd</sup>)
- The E was much drier than the A above it, it seems as though the E repels water, so the buried A just collects water at the bottom:

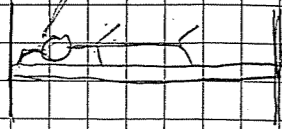
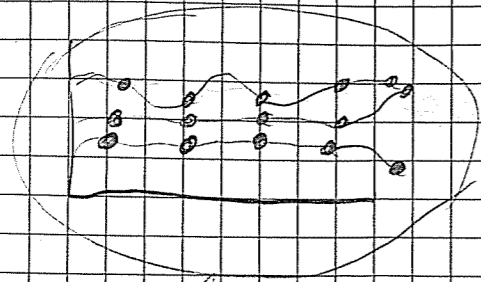


- I then recorded the points which David measured after lunch, while having to stop and cover the unit due to a light rain, but it quickly passed and we finished mapping.
- I mapped the different strata while Megan recorded and conferred with me on the different soil textures.

4/14/12  
Lab day with Morgan

- Morgan did a few float samples while I water-screened three buckets total (from two contexts) and washed up the dirty buckets.
- After we finished those, Morgan and I rough sorted a few trays.
- Morgan and I then washed artifacts for the remainder of the day.

Dotty Profile Maps!!!



"No, anything but dotty profile maps!!"

I may have been out in the hot sun for a little too long.

10/20/13

- For most of the morning the crew (minus Megan and Ashley) backfilled Bayou Pierre. We first backfilled the trench unit and then Ben, Kelly, and I went over our backfilling of the mounds A and B as they had slumped.
- Dave, Kelly, and I then went to Winsor to see if Megan and Ashley needed help and we held up the sheet for them while they took a picture. We then ate lunch at Winsor and moved a tripod, plywood, and two screens, leaving the tripod and plywood by the gate for Vin to pick up later.
- Dave, Kelly, and I then found copper pipes on Emerald mound where we then played stickball on the plaza at Emerald Cavesomb. We then came back to the shelter and did labwork. I rough sorted and then finished the bag we didn't finish yesterday.

6/21/13

Lab day with Ben and Morgan

- In the morning I floated the remaining float samples from Windsor mound. It was really cool to see all of the daub in the floats, there were large chunks of it in both the float and water screen samples.
- After floating I cleaned tools and buckets with Ben and Morgan. After we washed and oiled the shovels, David sharpened them and I oiled the fresh edges. Sadly after lunch I managed to cut my foot when one of the sharpened shovels slid against my foot and sliced it open. I put a bandaid on it and Ben and I began to clean the shelter.
- I swept the kitchen, dining room, living room, bathrooms, and part of the hall, cleaned the kitchen counters, and then swept the vacant girls rooms before rough sorting a few bags when David and Morgan came back from rockfilling Windsor. After that all of us got ready for the party.