

## **THE FELTUS EXAMPLE**

**AN ILLUSTRATION OF THE STEPS USED TO CREATE DETAILED  
MOUND SITE MAPS BY COMBINING LIDAR AND  
TOTAL STATION TOPOGRAPHIC COVERAGE**



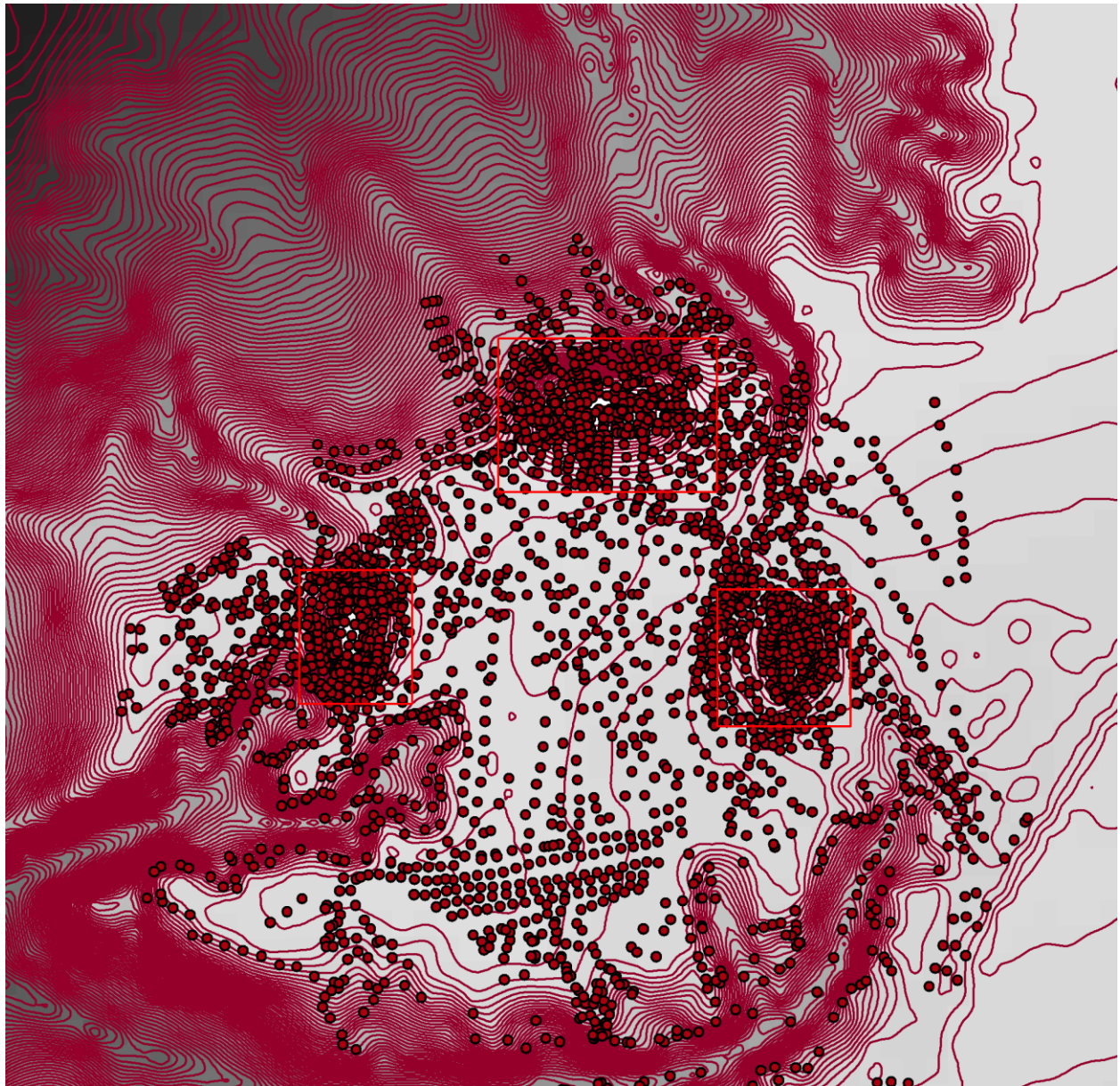
**3<sup>rd</sup> Arc-Second LiDAR Coverage (approx. 10 m spacing of data points). ArcGIS map view.**





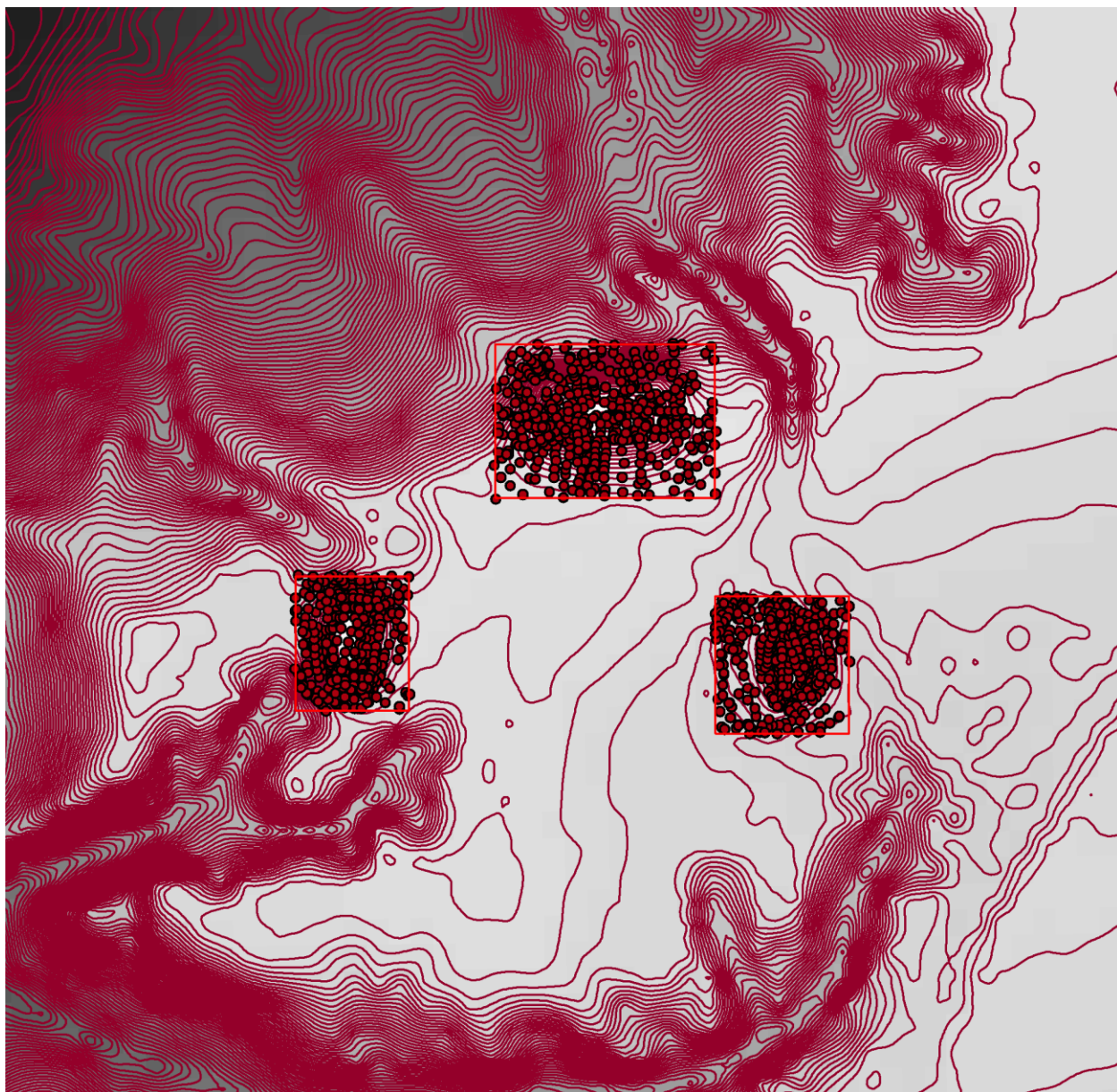
**3<sup>rd</sup> Arc-Second LiDAR Coverage with points removed from mounds. ArcGIS map view.**





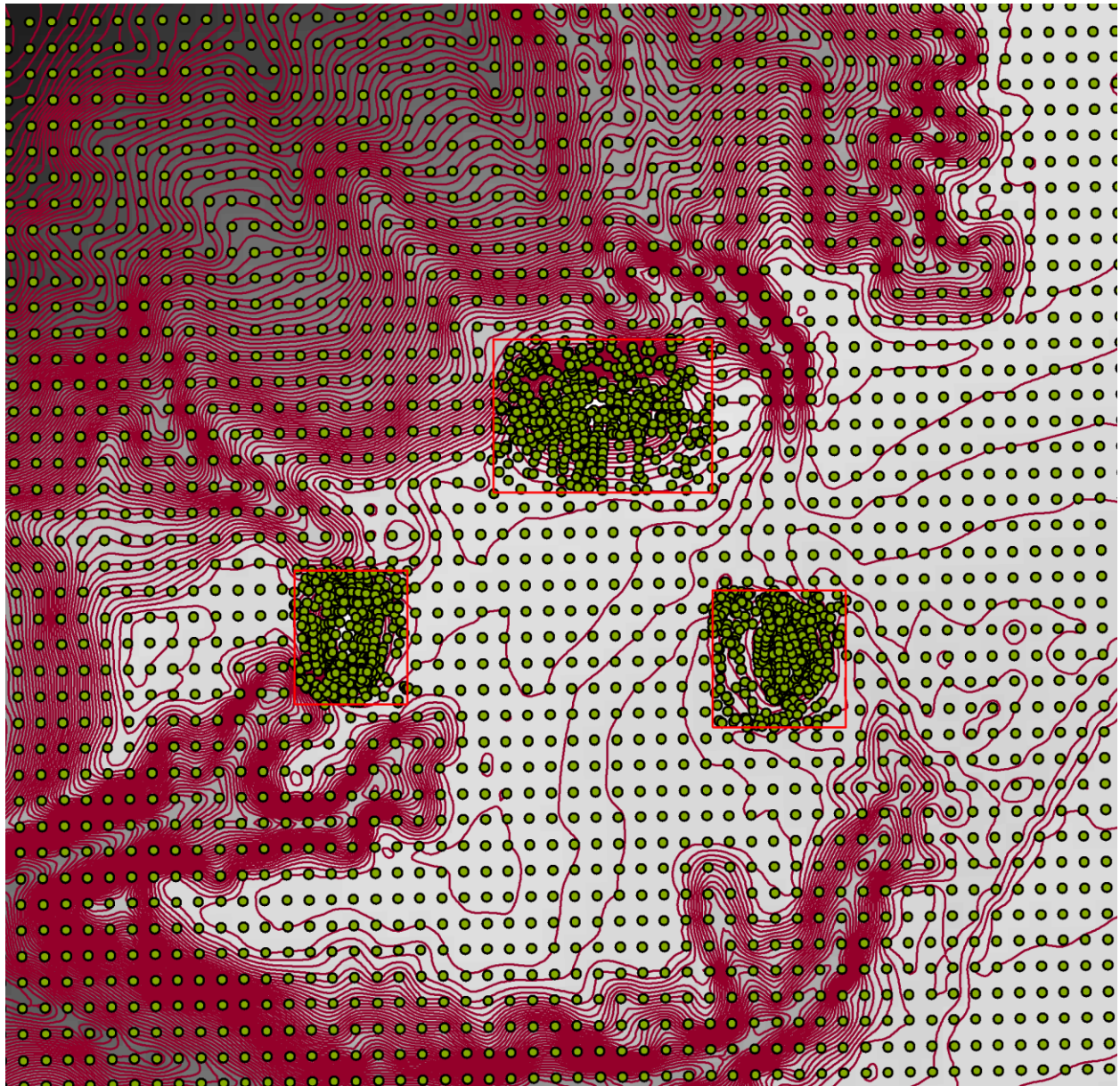
**Total Station Topographic Coverage (<5 m spacing of data points on mounds). ArcGIS map view.**





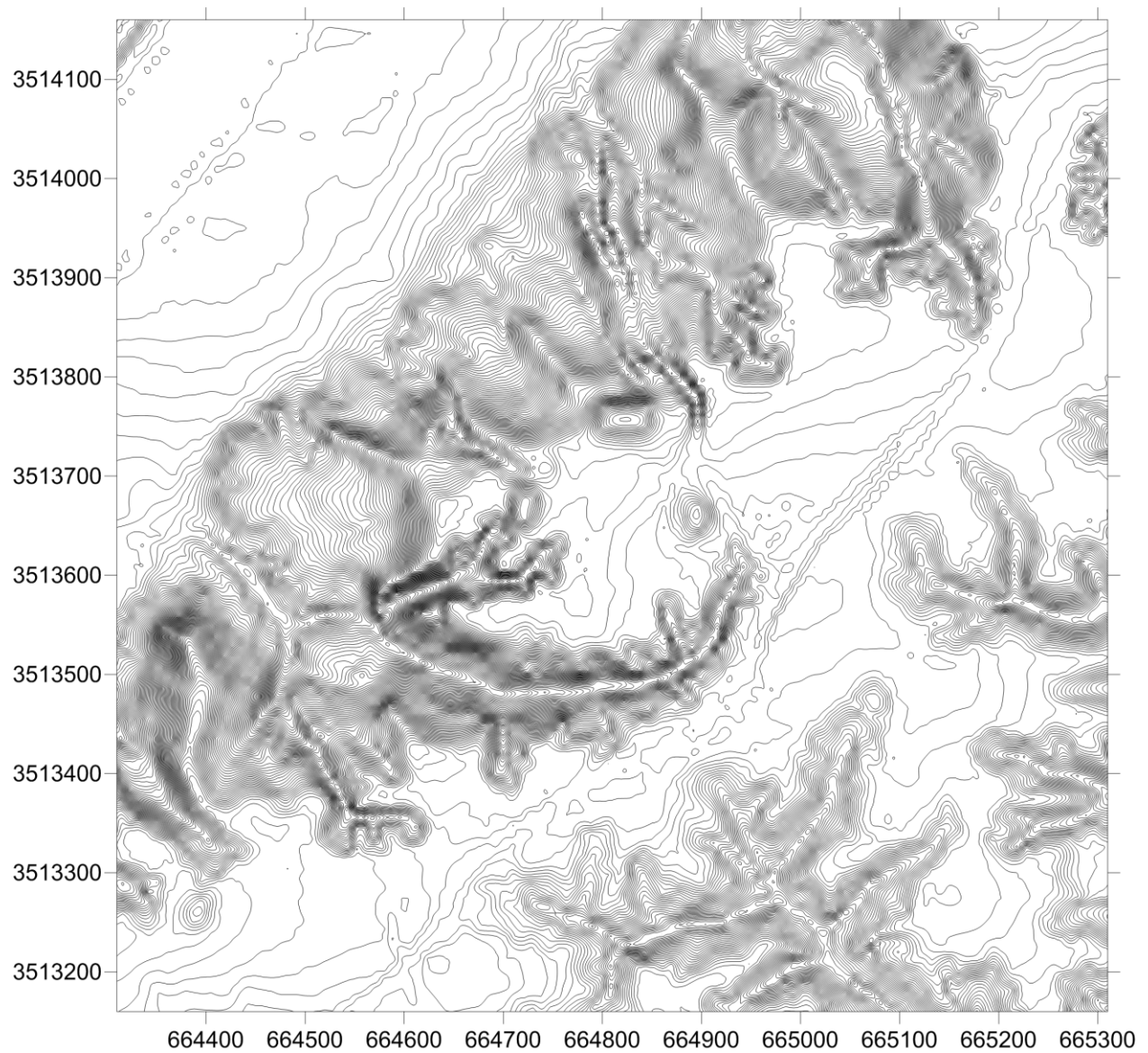
**Total Station Topographic Coverage with non-mound points removed. ArcGIS map view.**



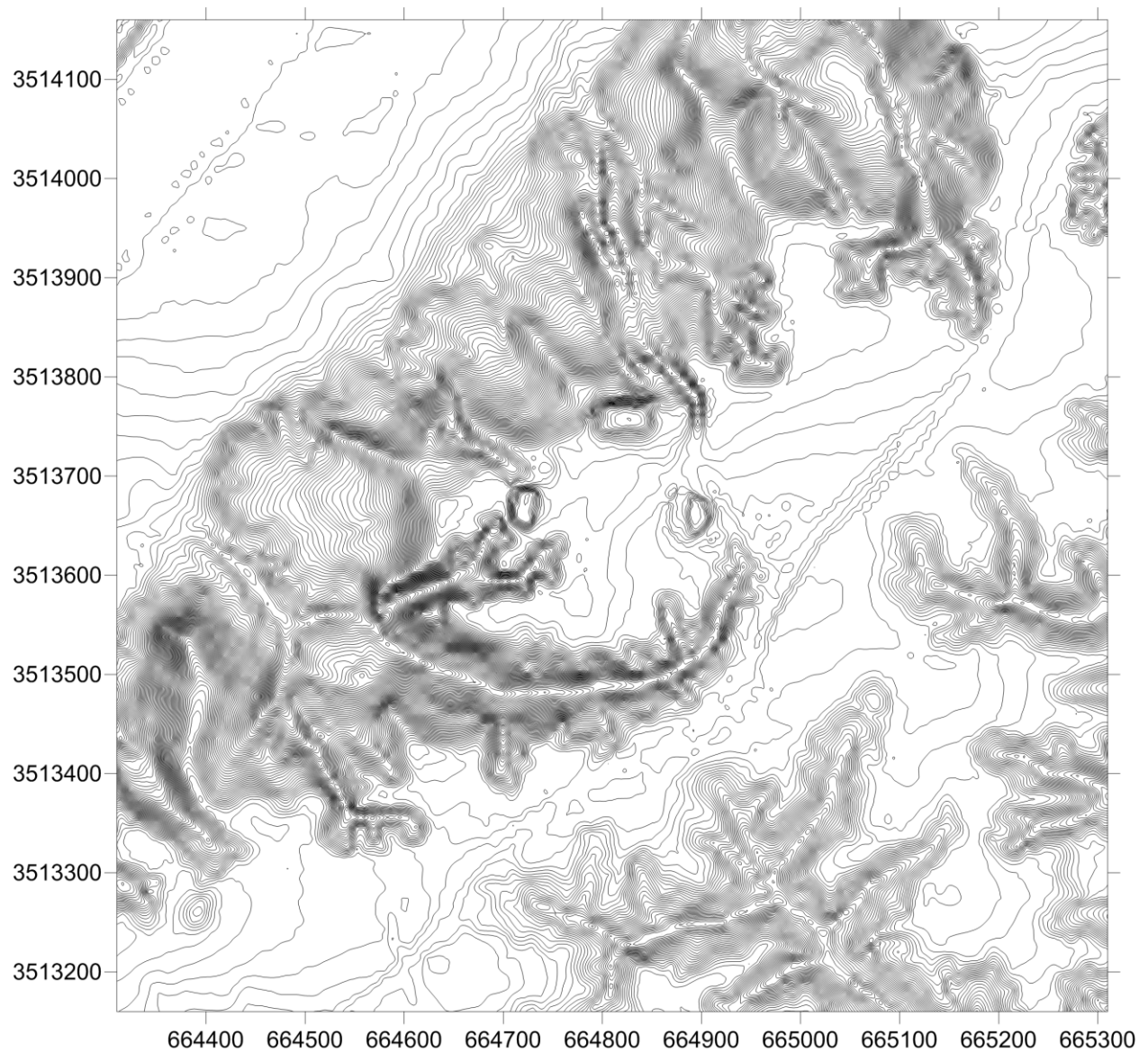


**Combined LiDAR and Total Station Topographic Coverage ArcGIS map view.**



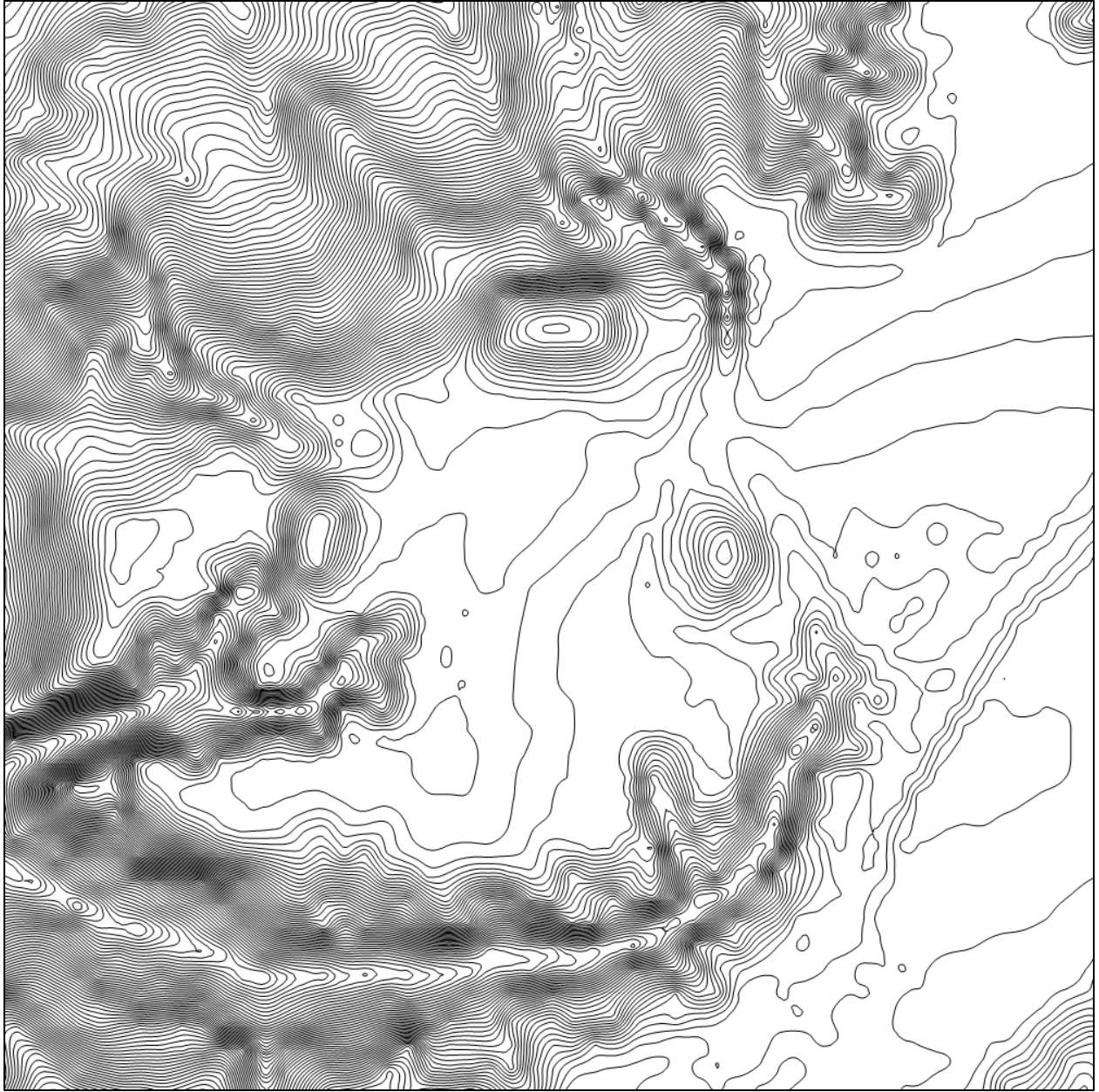


**Topographic Map Based on LiDAR Coverage (points gridded at 2 meters; 50 cm contour interval). Surfer map view.**

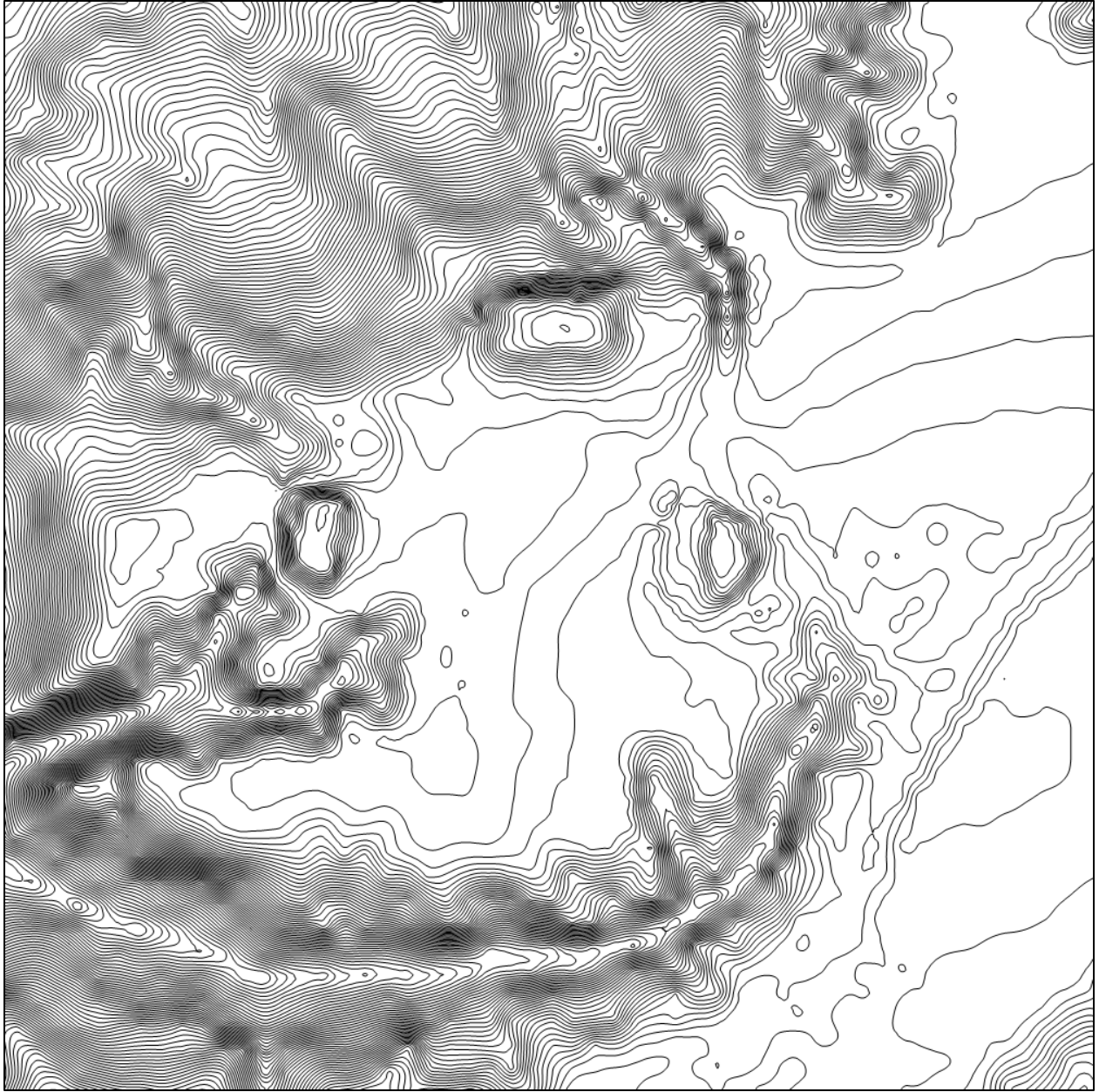


**Topographic Map Based on Combined LiDAR and Total Station Coverage (points gridded at 2 meters; 50 cm contour interval). Surfer map view.**





**Close-up View of Topographic Map Based on LiDAR Coverage**



**Close-Up View of Topographic Map Based on Combined LiDAR and Total Station Coverage**