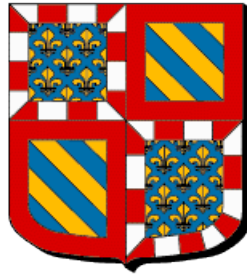


Burgundy Historical Landscapes Working Group (Scott Madry, Elizabeth A. Jones, Amanda B. Tickner, D. Seth Murray—NC State, Tamara J. Misner—Pittsburgh University)

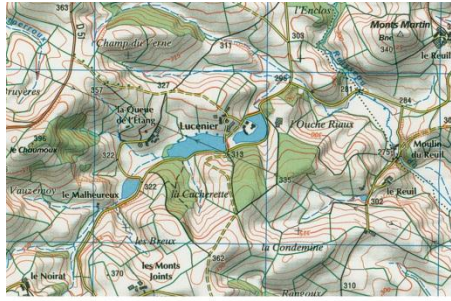


We are a group of interdisciplinary researchers working on an ongoing project investigating the present and historic French landscape of the past 250 years in a research area encompassing the *Commune* of Uxeau, (about 33 sq. km.) and its surrounding area (about 136 sq. km.) in the Burgundy region of France (www.burgundylandscapes.com). The working group is documenting the land and water use over the 250 year time period in the region and looking for patterns of persistence and change. Our current research includes four separate but integrated research foci:

1) Spatial analysis is conducted using advanced remote sensing, GIS and GPS, with specific emphasis on the incorporation of historical data in the form of cartography, aerial photographs, and remote sensing into a multi-temporal, integrated GIS database that is available for use by all team members;



1759 scanned Cassini map showing extra historical features in GIS, including ponds, mills and streams.

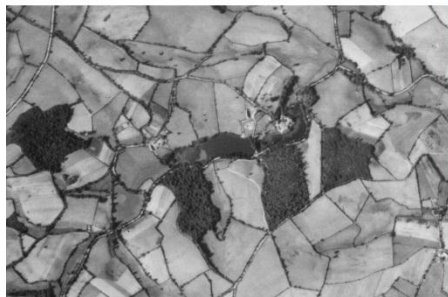


2002 IGN 1:25,000



Google Earth
1835 Cadastre

1945 Aerial Photo



Lucenier



Examples of historical land use data sources incorporated into GIS.

2) Documentary research is conducted through the analysis of historical records pertaining to land use;

NOM S. PROPRIETAIRES		DESIGNATION DE LA NATURE ET DE LA CONTENANCE DE CHACUN D'UN DES MOUVENS DE PROPRIETE COMPRES DANS LA SECTION		EVALUATION EN DENIERS MET	
NUMEROS DE PROPRIETAIRES	NOMS.	NATURE	CONTENANCE	EN DENIERS MET	EN 1790
1	M. De nou marillou	Terre mise en champ	4 arpents 3 toises 50 cent.	8	10
2	Les heritiers Deise.	Terre mise en champ	4 arpents 4 toises 6	8	10
3	M. De Stachel	Terre mise en champ	4 arpents 3 toises 3	8	10
4	Les heritiers	Terre mise en champ	4 arpents 3 toises 3	8	10
5	M. De nou marillou	Le champ de l'Alang	4 arpents 3 toises 3	8	10
6	M. De nou marillou	Le champ de l'Alang	4 arpents 3 toises 3	8	10
7	M. De nou marillou	Le champ de l'Alang	4 arpents 3 toises 3	8	10
8	M. De nou marillou	Le champ de l'Alang	4 arpents 3 toises 3	8	10
9	idem	Le champ de l'Alang	4 arpents 3 toises 3	8	10
10	idem	Le champ de l'Alang	4 arpents 3 toises 3	8	10
11	idem	Le champ de l'Alang	4 arpents 3 toises 3	8	10
12	M. De Stachel	Le champ de l'Alang	4 arpents 3 toises 3	8	10
13	M. De Stachel	Le champ de l'Alang	4 arpents 3 toises 3	8	10

1791 Cadastre records including ownership, land use and tax value information.

3) Geological analysis of pond sediments and pollen cores provides long-term records of environmental and land use change;



Tamara Misner and Dr. Michael Rosenmeier coring Lucenier pond for sediments.

4) Oral history and contemporary ethnographic interviews with farmers and local residents investigate water and land use practices, along with corresponding changes in perceptions and attitudes over time. The comparison of the results of these distinct research activities serves to verify and calibrate the individual interpretations, and the integration of the results provides a fuller and more complex understanding of the factors and issues involved in the creation of landscapes and their resilience.



Dr. D. Seth Murray and Dr. Carole Crumley interviewing local farmers in Uxeau.