

## CHAPTER VI

### Excavations in the Area Around Mound P

#### Excavation West of Mound P

The months of June through August, 1936 were devoted to the excavation of an area over which a permanent archaeological museum was to be built. This excavation was designated "west of P" in the Alabama Museum terminology.

The excavation west of Mound P produced far less data than almost any other excavation at Moundville. Only about 50 percent of the archaeological features excavated were adequately recorded. This is in sharp contrast to all the other excavations conducted at Moundville where, given field techniques of the day, the notes faithfully reflected all classes of data that should have been recognized by the excavators.

The two major factors which combined to reduce the excavation west of Mound P to chaos were the weather and the absence of trained archaeologists. Neither the DeJarnette brothers nor Dr. Jones were present during the excavation. Record rains during June, July and August 1936, obliterated most of the classes of archaeological features represented only by soil stains. The net result

of these two factors were a poorly kept set of field records, which left many observed archaeological features unrecorded, and the destruction of many archaeological features before they were either observed or recorded.

The poor quality of the field notes kept by the excavators is directly responsible for my inability to present all the data represented in the field notes. For example, many of the burials which were excavated and for which there were burial records in the field notes were never plotted on either of the two field maps. In other instances a burial was drawn on one map but was never numbered; without the number no connection could be made between the burial on the field map and the field notes. In other instances a burial on one map would correspond neither in form nor number to another burial at the identical grid locus on the other map; or if the numbers of the two burials corresponded their form or artifact inventory might not correspond. The fact that a grid system was superimposed over the excavated area was of little help in locating burials in the field notes because the excavators did not give grid references on the burial records.

Given the above problems the drafting of a site map for the area presented many difficulties. A resolution of these difficulties was effected by including in the

excavation plan only those data about which there were no significant disagreements in either the field maps or the field notes. Burials which were included as unnumbered on the field maps have been included in figure VI-1 as unnumbered. In cases where two separate burials had been assigned the same number they have been included in figure VI-1 only when, on the basis of other associations, an accurate determination could be made as to which burial actually corresponded to the burial in the notes. The burials for which there were no data in the field notes, but were on one of the field maps, were labeled with the number suffixed with an "a". Burial data which were at this point still hopelessly confused were not included in figure VI-1. As a result of this data culling, about one-half of the burials excavated west of Mound P do not appear on figure VI-1. The associations of these burials with other archaeological features are forever lost.

Figures VI-2 and VI-3, though limited to the areas encompassed by the museum's in situ exhibit areas, reflect an accurate picture of what must have been the archaeological situation in the excavation as a whole. In these two burial pits the recovery of the excavated data neared 100 percent. Because the data from these two areas are still in situ within the museum building, they are thus subject to contemporary verification.

# EXCAVATIONS WEST OF MOUND P

477

## ARCHAEOLOGICAL FEATURES

- FO Fireplace
- P Whole pot
- BP Broken pot
- FE Pile of Fuller's Earth
- U Urn
- A Antler
- ▨ Wall trench
- o Post mold
- S Shells
- ⊖ Burial, pit, and number  
(burials not numbered here were not numbered on the field sheets)
- ◡ Unclassified soil stain

└─┘ Marks the corners of the present museum building.

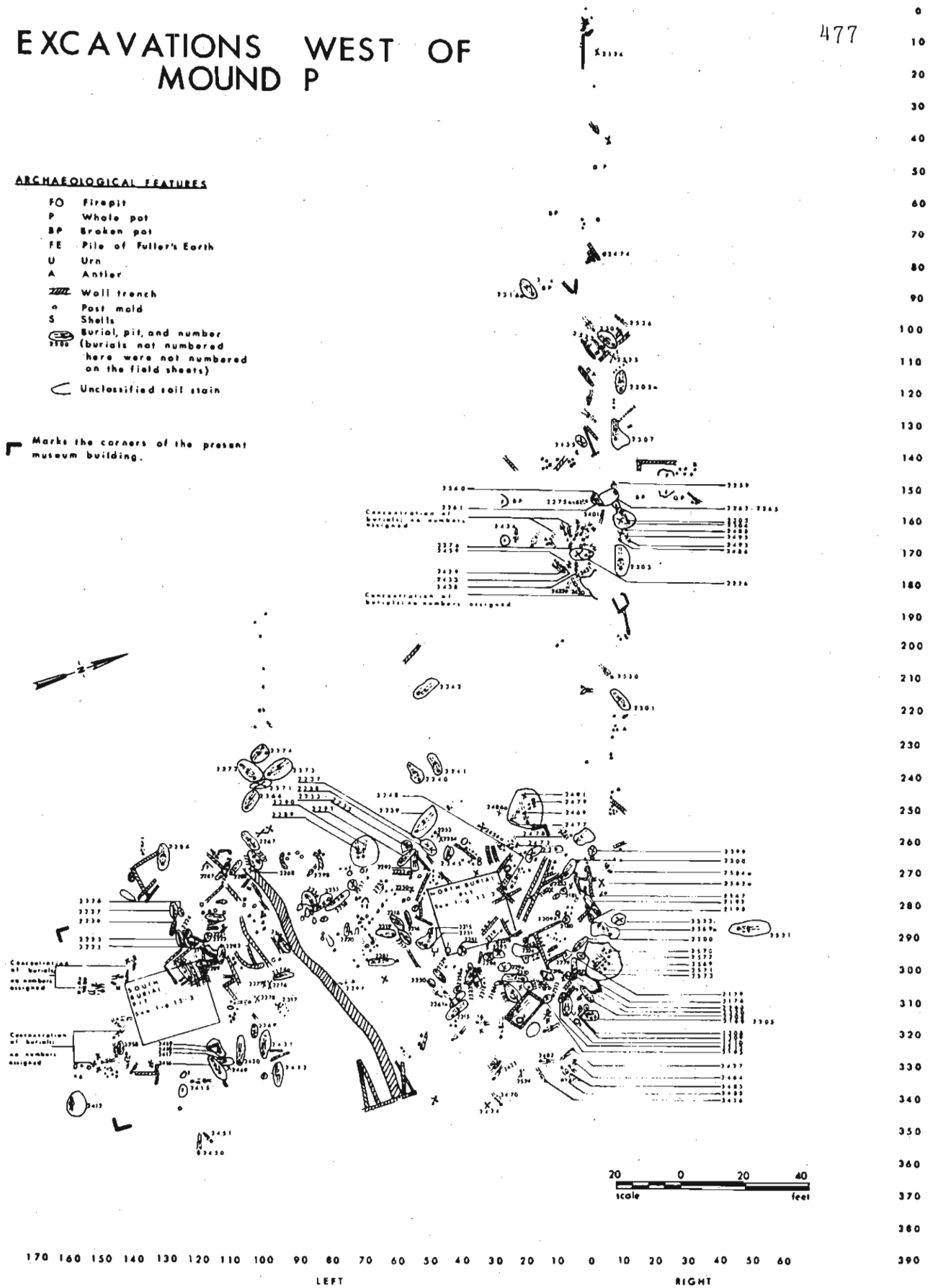


Figure VI-1.

The largest structural feature which was recorded on the field maps during the excavation west of Mound P was a large wall trench segment. The width of the excavated portions of this wall varied from three to five feet. The depth of this wall trench was not recorded. The length of the recovered segment of this wall was approximately 80 feet; (it runs from square 350L60 to square 270L110 in figure VI-1). The eastern terminus of the wall corresponds closely to the northern shore of lake number 3 (see figure VI-1). The other end of this wall has not been recovered. The correspondence of positioning between the wall west of Mound P and the wall recovered south of Mound G (Chapter V) should be noted. Both walls terminate against the shore of a lake and both walls appear to have served to screen part of the plaza area from the "village" area. It should also be noted that the large wall west of Mound P serves to segregate a number of extremely richly accompanied burials from the less well-accompanied burials. The soil stain which indicated the presence of the large wall can be seen in figure VI-4. This figure also shows the effects of the rain upon the excavation.

The rains, intense aboriginal activity and poor field and recording techniques have made any attempt to reconstruct the remainder of the structural features west of Mound P futile. A glance at figure VI-1 will reveal

mazes of wall trenches, but almost nowhere can a complete structural pattern be constructed from them.

Other archaeological features such as the firepits and in situ artifacts suffered from the same poor documentation as the structures. The fireplaces were recorded on the field maps, and they are shown in figure VI-1. However, the scale of the field maps was so manifestly faulty (some burials were rendered nine feet tall), that fireplace dimensions could not be safely scaled from the field drawings. The in situ artifacts, like the firebasins, were shown on the field maps, but their field specimen numbers were not noted on the maps. Therefore, with the exception of the pile of "Fullers Earth" (in square 290L80), no connection can be made between the field maps and the artifacts. However, for the purposes of the record, a list of the artifacts which were recovered apart from the burials is given below.

TABLE VI-1

Unassociated Artifacts Recovered  
from West of Mound P

Artifact Class	Count	Catalogue Numbers (Suffixed by WP)
<b>POTTERY</b>		
Bowls	5	16, 54, 68, 73, 76.
Water bottles	1	238.
"Toy Pot"	1	82.
Pipe	1	101.
Discoidal	2	69, 244.
<b>BONE TOOTH AND HORN</b>		
Bone awls	3	55, 235, 236.
Bone bead	1	64.
Deer antler	2	73, 232.
Shark tooth pendant	1	226.
<b>STONE</b>		
Whetrocks	4	3, 4, 7, 120.
Greenstone axe fragments	3	5, 239, 240.
Misc. fragments	1	1.
Discoidals	2	117, 248.
<b>SHELL</b>		
Bead	1	62.
Perforated shell	1	234.
<b>RAW MATERIALS</b>		
Green paint	1	10.
Red paint	4	75, 79, 250, 253.
Fullers earth	2	2, 11.

TABLE VI-1 Continued

Artifact Class	Count	Catalogue Numbers (Suffixed by WP)
MISCELLANEOUS		
Piece of burned clay	6.	
Fish hook	251.	
Charred corn cobs painted red	252.	
Broken "double pot" containing bones	71.	
Figurine "used as a pendant"	242.	



In addition, a stone pipe (figure VI-5) was found by Arthur Snipes in a ditch near the excavation.

The burials, which constitute the major class of archaeological features recovered from the excavation west of Mound P, are described below. Where possible these burial descriptions are related to a burial shown in figures VI-1, VI-2 or VI-3. However, as was mentioned above, many of the burials were not recorded on the field map, and the numbers assigned to many of the burials were only accounted for by the presence of a descriptive burial sheet.

Of all the burials recovered from west of Mound P, the most interesting interment was neither numbered on the field maps nor represented by a burial sheet. There is a burial and a fireplace enclosed in either a small rectangular structure or a coffin in squares 330, 320L30. The burial bears no number on the field maps and nowhere in the field notes is there an entry listing the conjunction of these three features. Given the unique nature of this burial, the lack of information is indeed unfortunate.

The burials described below are burials for which there are data of any form. The format used to order the data for each of the burials is that established at the

Figure VI-2.

North Burial Pit  
Museum Excavation  
West of Mound P

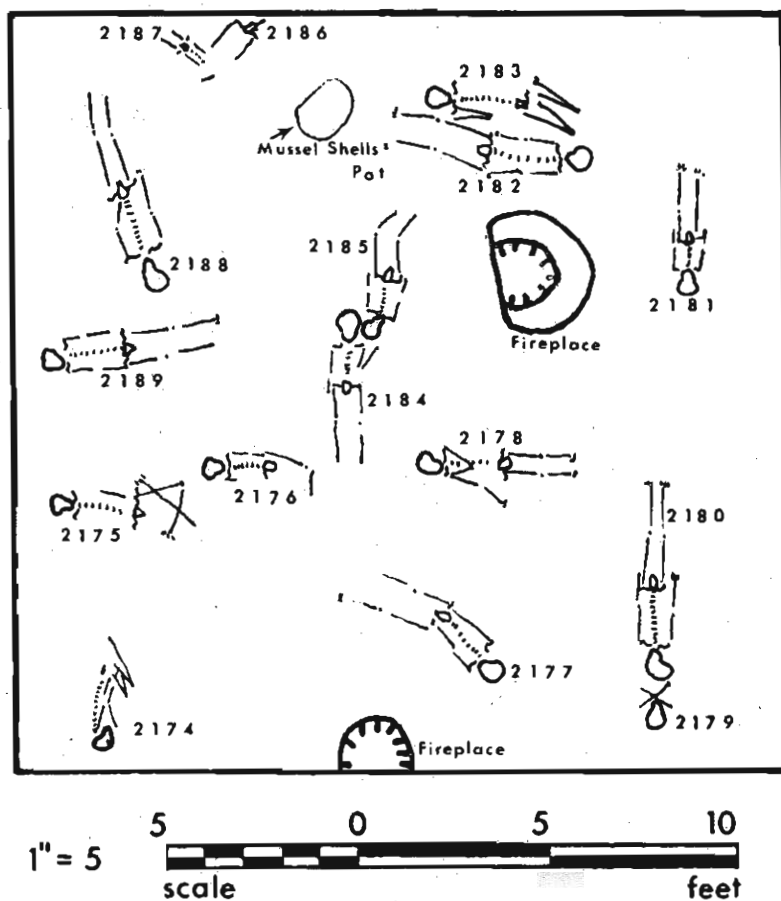


Figure VI-3.

South Burial Pit  
Museum Excavation  
West of Mound P

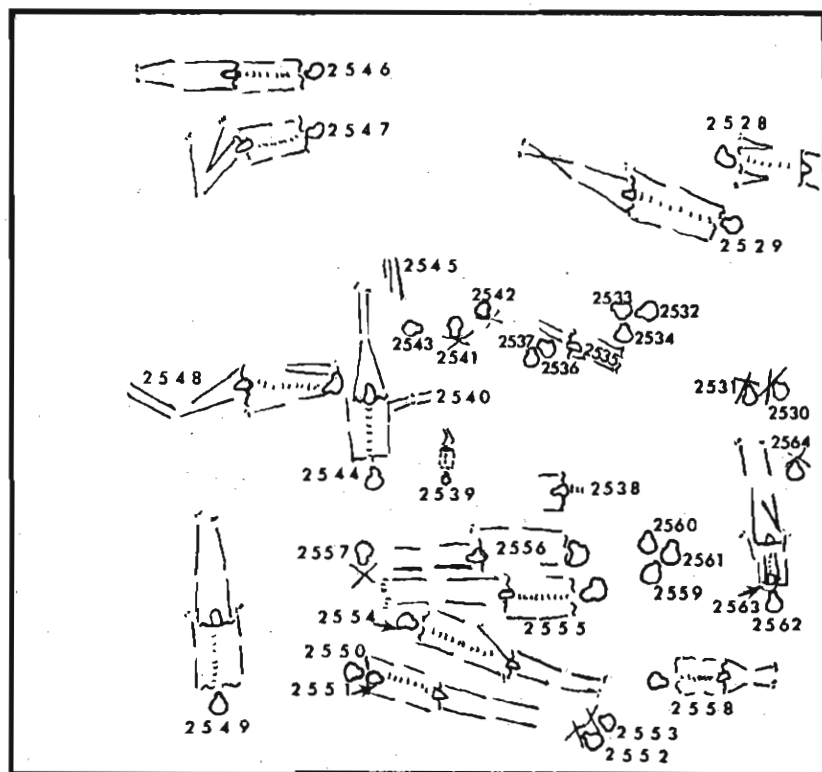




Figure VI-4. wall trench stain west of Mound P.



Figure VI-5. Stone pipe found in a ditch west of Mound P.

beginning of this volume and a sketch of this format precedes the burial descriptions proper.

Excavations West of Mound P  
Burials 2174-2189, 2204-2223, 2225-2237, 2239-2345, 2347-  
2373, 2375-2383, 2385, 2394-2422, 2425, 2427-2499, 2515,  
2516, 2518-2565, 2567-2574, 2616, 2624, 2625, 2629-2645.  
Guide to Burial Descriptions

N. D. = No Data; -- = Not Applicable

- I. Site designation and burial number (i.e. WP2174).
- II. Square number.
- III. Age.
- IV. Sex (if given ~~on~~ C. E. Snow's burial cards).
- V. Form of burial:
  - A. Single - or multiple (if multiple numbers of associated burials given).
  - B. Articulated, partially articulated, bundle, disturbed, skull only.
  - C. Extended, partially flexed, fully flexed.
  - D. On back, on right side, on left side, on face.
  - E. In pit, no pit.
  - F. Dimensions of pit.
  - G. Orientation (head-feet). Direction enclosed in parentheses (N-S) or N-(S) indicates uncertainty in one or both directions.
- VI. Internal associations and locations with field specimen numbers: e. g. Pot, right shoulder, 251WP.

## VII. External Associations:

- A. Not used.
- B. Nearest firebasin, in feet.
- C. Nearest neighbor burial number.

## VIII. Stratigraphic and other association.

## IX. Bones recovered; skeletal condition.

## X. Remarks.

I. WP2174. II. North burial pit. III. Adult.

IV. Male.

V. A. Single B. Partially articulated C. Partially flexed D. On back E. N. D. F. -- G. E-W.

VI. None.

VII. B. 5 C. 2175.

VIII. N. D.

IX. N. D.

I. WP2175. II. North burial pit. III. N. D.

IV. N. D.

V. A. Single B. Partially articulated C. Partially flexed D. On back E. N. D. F. -- G. S-N.

VI. Deer scapula, at right hip, 17WP.

## WP2175 Continued

VII. B. 8 C. 2176.

VIII. 12 inches below the surface.

IX. Bones in poor condition.

I. WP2176. II. North burial pit. III. Adult.

IV. Female.

V. A. Single B. Partially articulated C. Partially flexed D. On back E. N. D. F. -- G. S-N.

VI. None.

VII. B. 6 C. 2175.

VIII. 20 inches below the surface.

IX. Skull shows signs of scalping (see Snow 1941: 55-57).

X. Snow (1941) assigns burial number 2177 to this skeleton. 2176 is most probably correct.

I. WP2177. II. North burial pit. III. Infant

IV. N. D.

V. A. Single B. Partially articulated C. Extended D. On back E. N. D. F. -- G. NNE-SSW.

VI. Mussel shell, between knees, 18WP.

VII. B. 3 C. 2178.

VIII. 8 inches below surface.

IX. N. D.



- I. WP2178. II. North burial pit. III. Adult.  
 IV. N. D.  
 V. A. Single B. Partially articulated C. Extended  
 D. On back E. N. D. F. -- G. S-N.  
 VI. None.  
 VII. B. 3 C. 2184.  
 VIII. 24 inches below the surface.  
 IX. N. D.  
 X. Left arm across chest touching right shoulder.

- I. WP2179. II. North burial pit. III. Adult.  
 IV. Female.  
 V. A. Multiple, with 2180 B. Bundle C. -- D. --  
 E. N. D. F. -- G. --.  
 VI. Large plain pot, back of skull, 19WP.  
 Plain pot, left side of skull, 20WP.  
 Plain pot, left rear of skull, 21WP.  
 VII. B. 6 C. 2180.  
 VIII. 16 inches below the surface.  
 IX. Bones in fair condition.  
 X. "Piled at head of skeleton 2180."

- I. WP2180. II. North burial pit. III. Adult.  
 IV. Male.  
 V. A. Multiple, with 2179 B. Articulated  
 C. Extended D. On back E. N. D. F. --  
 G. E-W.  
 VI. Clam shell effigy, left of skull, 22WP.  
 Part of bowl, right of skull, 23WP.  
 VII. B. 7 C. 2179.  
 VIII. 16 inches below the surface.  
 IX. N. D.  
 X. Duplicate number: there is another skeleton  
 numbered 2180 in square 290L10. There are no data  
 on skeleton 2180 in square 290L10.

- I. WP2181. II. North burial pit. III. Adolescent  
 IV. N. D.  
 V. A. Single B. Articulated C. Extended D. On  
 back E. N. D. F. -- G. E-W.  
 VI. None.  
 VII. B. 2 C. 2182.  
 VIII. N. D.  
 IX. Bones in a fair state of preservation.  
 X. Duplicate number: there is another skeleton  
 numbered 2181 in square 280L10. There are no data  
 on skeleton 2181 in square 280L10.

- I. WP2182. II. North burial pit. III. Adult.  
 IV. Female.  
 V. A. Multiple with 2183 B. Partially articulated  
 C. Extended D. On face E. N. D. F. --  
 G. N-S.  
 VI. Discoidal stone (of iron carbonate), at left chin,  
 25WP.  
 Stone, at left knee, 24WP.  
 VII. B. 2 C. 2183.  
 VIII. 32 inches below the surface.  
 IX. N. D.  
 X. "Burial alongside another skeleton also extended on  
 face." Duplicate number: there is another skeleton  
 numbered 2182 in square 280L20. There are no data  
 on skeleton 2182 in square 280L20.
- I. WP2183. II. North burial pit. III. Adult.  
 IV. N. D.  
 V. A. Multiple, with 2182 B. Partially articulated  
 C. Partially flexed D. On face E. N. D. F. --  
 G. S-N.  
 VI. None.  
 VII. B. 3 C. 2182.  
 VIII. 30 inches below the surface.  
 IX. N. D.  
 X. Skeleton "on face with knees bent and feet against  
 hips." The head of the skeleton is on a level with  
 the knees of skeleton 2182.

- I. WP2184. II. North burial pit. III. Child.  
 IV. N. D.  
 V. A. Single B. Partially articulated C. Extended  
 D. On back E. N. D. F. -- G. W-E.  
 VI. Pottery fragment, under right arm, 26WP.  
 VII. B. 4 C. 2185.  
 VIII. 30 inches below the surface.  
 IX. N. D.
- I. WP2185. II. North burial pit. III. Child.  
 IV. N. D.  
 V. A. Single B. Partially articulated C. Partially  
 flexed D. On back E. N. D. F. -- G. ESE-(WNW).  
 VI. Plain water bottle, left of skull, 27WP  
 Small bowl, at left shoulder, 28WP.  
 VII. B. 3 C. 2184.  
 VIII. 24 inches below the surface.  
 IX. N. D.  
 X. "Knees flexed to left."
- I. WP2186. II. North burial pit. III. Adult.  
 IV. N. D.  
 V. A. Multiple, with 2187 B. Disturbed C. --

## WP2186 Continued

D. -- E. N. D. F. -- G. --.

VI. None.

VII. B. 7 C. 2187.

VIII. 16 inches below the surface.

IX. N. D.

X. Below and at right hand of 2187.

I. WP2187. II. North burial pit. III. Infant.

IV. N. D.

V. A. Multiple, with 2186 B. Articulated

C. Extended D. On back E. N. D. F. --

G. N. D.

VI. Small bowl, inverted over skull, 29WP.

VII. B. 8 C. 2186.

VIII. 14 inches below the surface.

IX. N. D.

X. Above and to left of skeleton 2186.

I. WP2188. II. North burial pit. III. Adult.

IV. Female.

V. A. Single B. Partially articulated C. Extended

D. On left side E. N. D. F. -- G. ENE-WSW.

## WP2188 Continued

VI. None.

VII. B. 8 C. 2189.

VIII. 16 inches below the surface.

IX. Skeleton in excellent condition.

I. WP2189. II. North burial pit. III. Adult.

IV. Female.

V. A. Single B. Partially articulated C. Extended

D. On back E. N. D. F. -- G. S-N.

VI. None.

VII. B 8 C. 2188.

VIII. N. D.

IX. "Good skeleton."

There are no data for burials 2190-2193. Numbers 2194-2203 used twice; there are no data for burials 2194-2203 west of Mound P; there are data for burials 2194-2203 south of Mound W.

I. WP2204. II. 320L10. III. Adult. IV. N. D.

V. A. N. D. B. Disturbed C. -- D. -- E. --

F. -- G. --.

## WP2204 Continued

- VI. None.
- VII. B 2 C. N. D.
- VIII. 5 inches below the surface.
- IX. Small fragments of bone recovered.
- X. A mess.

I. WP2205. II. 320L10. III. Adult. IV. N. D.

V. A. N. D. B. N. D. C. Apparently extended  
D. On back. E. N. D. F. N. D. G. N. D.

VI. None.

VII. B. 2 C. N. D.

VIII. 14 inches below the surface.

IX. "Almost entire skeleton recovered."

I. WP2206. II. N. D. III. Adult. IV. N. D.

V. A. N. D. B. Disturbed C. -- D. -- E. N. D.  
F. -- G. N. D.

VI. None.

VII. N. D.

VIII. 6 inches below the surface.

IX. No bones recovered.

I. WP2207. II. N. D. III. Adult. IV. N. D.  
V. A. N. D. B. Partially articulated C. Extended  
D. On back E. N. D. F. -- G. --.  
VI. None.  
VII. N. D.  
VIII. 20 inches below the surface.  
IX. No bones recovered.

I. WP2208. II. 310 O. III. Adult. IV. N. D.  
V. A. N. D. B. Partially articulated C. Extended  
D. On back E. N. D. F. -- G. N. D.  
VI. Pot, at rear of skull, 96WP.  
VII. B. 12 C. N. D.  
VIII. 26 inches below the surface.  
IX. N. D.

I. WP2209. II. 290L20. III. Adult. IV. N. D.  
V. A. Single B. Partially articulated C. Extended  
D. On back E. N. D. F. -- G. --.  
VI. None.  
VII. B. 1 C. N. D.  
VIII. 14 inches below the surface.  
IX. Skull missing; long bones in fair condition.



I. WP2210: No data.

I. WP2211. II. N. D. III. Adult. IV. N. D.

V. A. N. D. B. Partially articulated C. Extended  
D. On back E. N. D. F. -- G. N. D.

VI. Toy turtle effigy, N. D., 52WP.

VII. N. D.

VIII. 36 inches below the surface.

IX. Entire skeleton recovered.

I. WP2212. II. N. D. III. Adult. IV. N. D.

V. A. N. D. B. Partially articulated C. Extended  
D. On back E. M. D. F. -- G. N. D.

VI. None.

VII. N. D.

VIII. 24 inches below the surface.

IX. No bones recovered.

I. WP2213 II. N. D. III. Child. IV. N. D.

V. A. Single B. Disturbed C. -- D. --  
E. N. D. F. -- G. --.

VI. None.

## WP2213 Continued

VII. N. D.

VIII. 10 inches below the surface.

IX. Fragments of bone recovered.

I. WP2214. II. N. D. III. Adult. IV. N. D.

V. A. Single B. Partially articulated C. Extended  
D. On back E. N. D. F. -- G. N. D.

VI. None.

VII. N. D.

VIII. 20 inches below the surface.

IX. Long bones and a few bone fragments recovered.

I. WP2215. II. 300L60. III. Adult. IV. N. D.

V. A. Multiple, with 2231 B. Disturbed C. --  
D. -- E. In pit F. 8.0 feet x 4.0 feet x ?  
G. NW-SE.

VI. None.

VII. B. 3 C. 2231.

VIII. 6 inches below the surface.

IX. No bones recovered; skeleton badly broken by plow.

I. WP2216. II. 290L60. III. Adult. IV. N. D.  
 V. A. Single B. Disturbed C. Extended D. On  
 back E. In pit F. 4.9 feet x 2.0 feet x ?  
 G. E-W.  
 VI. None.  
 VII. B. 2 C. 2218.  
 VIII. 5 inches below the surface.  
 IX. No bones recovered.

I. WP2217. II. 300L60. III. N. D. IV. N. D.  
 V. A. Single B. Partially articulated C. Extended  
 D. On back E. In pit F. 5.5 feet x 2.6 feet x  
 ? G. E-W.  
 VI. None.  
 VII. B. 8 C. 2218.  
 VIII. 9 inches below the surface.  
 IX. A few bone fragments recovered.  
 X. Skull "scalped" by plow.

I. WP2218. II. 290L70. III. N. D. IV. N. D.  
 V. A. Single B. Disturbed C. -- D. --  
 E. In pit F. N. D. G. N. D.  
 VI. None.

## WP2218 Continued

VII. B. 6 C. 2217.

VIII. 8 inches below the surface.

IX. Two "patellas" only bones recovered.

I. WP2219. II. 290L70. III. Adult. IV. N. D.

V. A. Single B. Disturbed C. -- D. --

E. In pit F. N. D. G. --.

VI. None.

VII. B. 11 C. 2217.

VIII. 8 inches below the surface.

IX. Only teeth and a few bone fragments recovered.

I. WP2220. II. 290L80. III. Adult. IV. N. D.

V. A. Single B. Disturbed C. Extended D. On  
right side E. N. D. F. -- G. --.

VI. Projectile point, at finger tips of right hand, N. D.  
2 awls; at fingertips of right hand, N. D.

VII. N. D.

VIII. 12 inches below the surface.

IX. No bones recovered.

X. Data for this burial confused.

I. WP2221. II. 300L120. III. N. D. IV. N. D.

V. A. N. D. B. Disturbed C. -- D. --

E. N. D. F. -- G. --.

VI. None.

VII. N. D.

VIII. 12 inches below the surface.

IX. No bones recovered.

I. WP2222. II. 300L120. III. Adult. IV. N. D.

V. A. N. D. B. N. D. C. Extended D. On back

E. N. D. F. -- G. N. D.

VI. None.

VII. N. D.

VIII. 30 inches below the surface.

IX. Most of the bones recovered.

I. WP2223. II. 300L130. III. Child. IV. N. D.

V. A. Single B. Partially articulated C. Extended

D. On back E. In pit F. 5.5 feet x 2.1 feet

x ? G. E-W.

VI. Small "toy" pot, by left cheek, 47WP.

VII. B. >20 C. 2225.

## WP2223 Continued

- VIII. 15 inches below the surface.
- IX. Skeleton in poor condition; no bones recovered.
- X. Burial pit cut through by later house wall.
- 
- I. WP2225. II. 300L130. III. Adult. IV. N. D.
- V. A. Single B. Disturbed C. -- D. -- E. In  
pit F. N. D. G. E-W.
- VI. None.
- VII. B. >20 C. 2226.
- VIII. Almost on surface.
- IX. No bones recovered.
- 
- I. WP2226. II. 290L140. III. N. D. IV. N. D.
- V. A. Single B. Disturbed C. Extended D. On  
back E. In pit F. N. D. G. SE-NW.
- VI. None.
- VII. B. 20 C. 2227.
- VIII. 20 inches below the surface.
- IX. Fragments of legs recovered.

I. WP2227. II. 290L130. III. Adult. IV. N. D.  
 V. A. Single B. Disturbed C. -- D. -- E. In  
 pit F. N. D. G. N. D.  
 VI. None.  
 VII. B. 16 C. 2228.  
 VIII. 8 inches below the surface.  
 IX. Fragmentary skull only material recovered.

I. WP2228. II. 290L130. III. Adult. IV. N. D.  
 V. A. Single B. Disturbed C. -- D. --  
 E. In pit F. N. D. G. N. D.  
 VI. None.  
 VII. B. 16 C. 2227.  
 VIII. 6 inches below the surface.  
 IX. A few bone fragments recovered.

I. WP2229. II. 310L50. III. Adult. IV. N. D.  
 V. A. Single B. N. D. C. Extended D. N. D.  
 E. In pit F. 5.5 feet x 2.0 feet x ? G. E-W.  
 VI. None.  
 VII. B. 5 C. 2230.  
 VIII. 18 inches below the surface.

## WP2229 Continued

IX. A few bone fragments recovered.

X. Skeleton never fully uncovered.

I. WP2230. II. 310L50. III. Infant. IV. N. D.

V. A. Single B. N. D. C. Extended D. N. D.

E. In pit F. 2.8 feet x 2.2 feet x ? G. E-W.

VI. None.

VII. B. 9 C. 2229.

VIII. 18 inches below the surface.

IX. No bones recovered.

I. WP2231. II. 300L60. III. Infant. IV. N. D.

V. A. Multiple, with 2215 B. Disturbed C. Extended

D. On back E. In pit F. 8.0 feet x 4.0 feet

x ? G. WSW-ENE.

VI. None.

VII. B. 2 C. 2215.

VIII. 15 inches below the surface.

IX. A few bones plus skull recovered.



- I. WP2231. II. 300L60. III. Infant. IV. N. D.  
 V. A. Multiple, with 2215 B. Disturbed  
 C. Extended D. On back E. In pit F. 8.0 feet  
 x 4.0 feet x ? G. WSW-ENE.  
 VI. None.  
 VII. B. 2 C. 2215.  
 VIII. 15 inches below the surface.  
 IX. A few bones plus skull recovered.

- I. WP2232. II. 270L50. III. Adult. IV. N. D.  
 V. A. Single B. Disturbed C. -- D. --.  
 E. In pit F. N. D. G. N. D.  
 VI. None.  
 VII. B. 10 C. 2292.  
 VIII. 16 inches below the surface.  
 IX. A few bone fragments recovered.

- I. WP2233. II. 260L60. III. Adult. IV. N. D.  
 V. A. N. D. B. Articulated C. Extended D. On  
 back E. N. D. F. -- G. N. D.  
 VI. Sandstone discoidal, by left hip, 63WP.  
 VII. B. 16 C. N. D.  
 VIII. 14 inches below the surface.

## WP2233 Continued

- IX. Long bones and skull fragments recovered.
- X. The burial was never fully uncovered. It may be a multiple burial with 2234-2236, but the data to substantiate this is not present.

- I. WP2234. II. 270L60. III. Adult. IV. N. D.
- V. A. N. D. B. Disturbed C. -- C. -- E. N. D.  
F. -- G. --.
- VI. None.
- VII. B. 16 C. N. D.
- VIII. 8 inches below the surface.
- IX. Fragments of skull recovered.

- I. WP2235. II. 270L60. III. Child. IV. N. D.
- V. A. N. D. B. Disturbed C. -- D. -- E. N. D.  
F. -- G. N. D.
- VI. None.
- VII. B. 16 C. N. D.
- VIII. 12 inches below the surface.
- IX. A few fragments of bone recovered.

I. WP2236. II. 270L60. III. Adult. IV. N. D.  
 V. A. N. D. B. Disturbed C. -- D. --  
 E. N. D. F. -- G. N. D.  
 VI. None.  
 VII. B. 16 C. N. D.  
 VIII. 4 inches below the surface.  
 IX. No bones recovered.

I. WP2237. II. 270L60. III. Adult. IV. N. D.  
 V. A. Multiple, with 2238 B. Disturbed  
 C. Extended on back D. In pit E. 6.1 feet  
 x 3.0 feet x ? F. N. D. G. N. D.  
 VI. None.  
 VII. B. >20 C. 2238.  
 VIII. 12 inches below the surface.  
 IX. Fragments of bone recovered.

I. WP2238: This number was used both for a burial South of Mound W and a burial West of Mound P. There are no data for the burial West of Mound P except that it was in the pit with 2237.

- I. WP2239. II. 260L60. III. Infant. IV. N. D.  
 V. A. Single B. Disturbed C. -- D. --  
 E. N. D. F. -- G. N. D.  
 VI. None.  
 VII. B. >20 C. 2253.  
 VIII. 6 inches below the surface.  
 IX. A few bone fragments recovered.  
 X. Plowed completely through.

- I. WP2240. II. 250L60. III. Infant. IV. N. D.  
 V. A. Single B. N. D. C. Extended D. On back  
 E. In pit F. Unreliable (6 feet x 4 feet x ?)  
 G. E-W.  
 VI. Stone gorget, on chest, 59WP.  
 Pottery discoidal, by right shoulder, 58WP.  
 Conch columella, by left shoulder, 57WP.  
 VII. B. >20 C. 2241.  
 VIII. 8 inches below the surface.  
 IX. A few bone fragments recovered.

- I. WP2241. II. 240L50. III. Adult. IV. N. D.  
 V. A. Single B. N. D. C. Extended D. On left  
 side E. In pit F. N. D. G. E-W.

WP2241 Continued

- VI. None.
- VII. B. >20 C. 2240.
- VIII. 10 inches below the surface.
- IX. No bones recovered.
- X. Skeleton not fully uncovered.

- I. WP2242. II. 240L60. III. Adult. IV. N. D.
- V. A. Single B. N. D. C. Extended D. On back
- E. In pit F. 7.0 feet x 3.5 feet x ?
- G. SSE-NNW.

- VI. None.
- VII. B. >20 C. None.
- VIII. 10 inches below the surface.
- IX. No bones recovered.
- X. Skeleton not fully uncovered.

- I. WP2242a. II. 300L20: No data.

- I. WP2243. II. N. D. III. Adult. IV. N. D.
- V. A. N. D. B. Disturbed C. -- D. -- E. N. D.
- F. -- G. N. D.

## WP2243 Continued

- VI. None.  
 VII. N. D.  
 VIII. 11 inches below the surface.  
 IX. A few fragments of bone recovered.

- I. WP2244. II. N. D. III. Adult. IV. N. D.  
 V. A. N. D. B. N. D. C. Extended D. On back  
 E. N. D. F. -- G. N. D.  
 VI. None.  
 VII. N. D.  
 VIII. 12 inches below the surface.  
 IX. Head not found; a few bones recovered.

I. WP2245: No data.

I. WP2246: No data.

- I. WP2247. II. N. D. III. Adult. IV. N. D.  
 V. A. N. D. B. Disturbed C. -- D. -- E. N. D.  
 F. -- G. N. D.

## WP2247 Continued

VI. None.

VII. N. D.

VIII. 20 inches below the surface.

IX. No bones recovered.

I. WP2248. II. N. D. III. Adult. IV. N. D.

V. A. N. D. B. N. D. C. Extended D. N. D.

E. N. D. F. -- G. N. D.

VI. None.

VII. N. D.

VIII. 20 inches below the surface.

IX. Total skeleton recovered.

I. WP2249. II. N. D. III. Adult. IV. N. D.

V. A. N. D. B. Disturbed C. -- D. --

E. N. D. F. -- G. N. D.

VI. None.

VII. N. D.

VIII. Near surface.

IX. No bones recovered.

I. WP2250. II. 280L50. III. Adult. IV. N. D.

V. A. Single B. Disturbed C. -- D. --

E. N. D. F. -- G. N. D.

VI. None.

VII. N. D.

VIII. 6 inches below the surface.

IX. No bones recovered.

I. WP2251. II. 300L50. III. Adult. IV. N. D.

V. A. Single B. Articulated C. Partially flexed

D. On back E. In pit F. N. D. G. N. D.

VI. None.

VII. B. 4 C. 2174.

VIII. 16 inches below the surface.

IX. Entire skeleton recovered.

X. Skeleton under wall of museum, north of burial pit.

I. WP2252. II. 260L50. III. Adult. IV. N. D.

V. A. Single B. Disturbed C. -- D. --

E. N. D. F. -- G. N. D.

VI. 2 copper ear plugs, N. D., 54WP.  
Plain pot, N. D., 53WP.

VII. B. >20 C. 2253.



## WP2252 Continued

- VIII. 11 inches below the surface.
- IX. A few bone fragments recovered.
- X. Badly disturbed.

- I. WP2253. II. 260L50. III. N. D. IV. N. D.
- V. A. Single B. Disturbed C. Extended D. On  
back E. N. D. F. -- G. N. D.
- VI. Pile of clay, at head, N. D.
- VII. B. >20 C. 2252.
- VIII. 8 inches below the surface.
- IX. No bones recovered.
- X. Body broken by plow.

- I. WP2254. II. 280L60: No data.

- I. WP2254a. II. 260L40. III. Infant. IV. N. D.
- V. A. Single B. Disturbed C. -- D. --  
E. N. D. F. -- G. N. D.
- VI. None.
- VII. B. 15 C. 2286a.
- VIII. 6 inches below the surface.

## WP2254a Continued

IX. No bones recovered.

X. Skeleton plowed through.

I. WP2255. II. 280L90. III. Adult. IV. N. D.

V. A. Single B. Partially articulated C. Extended  
D. On back E. In pit F. 6.5 feet x 2.4 feet  
x ? G. NW-SE.

VI. None.

VII. B. 3 C. 2258.

VIII. 10 inches below the surface.

IX. No bones recovered.

I. WP2256. II. 280L90. III. Adult. IV. N. D.

V. A. Single B. Partially articulated C. Extended  
D. On back E. In pit F. 6.0 feet x 3.5 feet  
x ? G. W-E.

VI. None.

VII. B. 6 C. 2255.

VIII. 12 inches below the surface.

IX. A few bone fragments recovered.

I. WP2257. II. 280L40. III. Child. IV. N. D.  
 V. A. Single B. Disturbed C. -- D. --  
 E. N. D. F. -- G. N. D.  
 VI. None.  
 VII. B. 3 C. 2258.  
 VIII. 18 inches below the surface.  
 IX. No bones recovered.

I. WP2258. II. 280L80. III. Infant. IV. N. D.  
 V. A. Single B. N. D. C. Extended D. On back  
 E. In pit F. N. D. G. N-S.  
 VI. Frog effigy bowl, at head, 72WP.  
 VII. B. 3 C. 2255.  
 VIII. 20 inches below the surface.  
 IX. A few bone fragments recovered.

I. WP2258a. II. 310L50. No data.

I. WP2259. II. 160-0 III. Adult. IV. N. D.  
 V. A. Single B. Partially articulated C. Extended  
 D. On back E. In pit F. N. D. G. W-E.  
 VI. Pebble nammer, on left hip, 48WP.

WP2259 Continued

VII. B. 13 C. N. D.

VIII. 16 inches below the surface.

IX. Entire skeleton recovered.

I. WP2260. II. 160-0. III. Child. IV. N. D.

V. A. Single (maybe multiple with 2661) B. N. D.

C. Extended D. On back E. In pit F. N. D.

G. E-W.

VI. 8 crude clay figurines "playthings", on chest,  
233WP.

VII. B. 18 C. 2261.

VIII. 12 inches below the surface.

IX. No bones recovered.

I. WP2261. II. 160-0. III. Adult. IV. N. D.

V. A. Single (maybe multiple with 2660) B. N. D.

C. Partially flexed D. On back E. In pit

F. N. D. G. N. D.

VI. None.

VII. B. 18 C. 2260.

VIII. 12 inches below the surface.

IX. Total skeleton recovered.

I. WP2261a. II. 320L50: No data.

I. WP2262. II. 160-0. III. Adult. IV. N. D.

V. A. N. D. B. Disturbed C. Extended D. On back  
E. N. D. F. -- G. N. D.

VI. None.

VII. B. 15 C. N. D.

VIII. 14 inches below the surface.

IX. no bones recovered.

I. WP2263. II. 160L10. III. Adult. IV. N. D.

V. A. N. D. B. Disturbed C. Extended D. On back  
E. N. D. F. -- G. N. D.

VI. None.

VII. B. 15 C. N. D.

VIII. 23 inches below the surface.

IX. No bones recovered.

I. WP2264. II. 160-0. III. Adult. IV. N. D.

V. A. N. D. B. N. D. C. Extended D. On back  
E. N. D. F. -- G. N. D.

## WP2264 Continued

- VI. None.  
VII. B. 15 C. N. D.  
VIII. 20 inches below the surface.  
IX. Most of the skeleton recovered.

- I. WP2265. II. 160-0. III. Child. IV. N. D.  
V. A. N. D. B. N. D. C. Extended D. On back  
E. N. D. F. -- G. N. D.

- VI. None.  
VII. B. 15 C. N. D.  
VIII. 20 inches below the surface.  
IX. Almost entire skeleton recovered.

- I. WP2266. II. 250L110. III. N. D. IV. N. D.  
V. A. Single B. N. D. C. Extended D. On back  
E. In pit F. N. D. G. SE-NW.

- VI. None.  
VII. B. >20 C. 2272.  
VIII. N. D.  
IX. N. D.

I. WP2267. II. 270L110. III. Adult. IV. N. D.  
V. A. Single B. Disturbed C. Extended D. N. D.  
E. In pit F. N. D. G. ESE-WNW.  
VI. None.  
VII. B. 15 C. 2270.  
VIII. 18 inches below the surface.  
IX. A few bone fragments recovered.

I. WP2268. II. 280L110. III. Adult. IV. N. D.  
V. A. Single B. Articulated C. Partially flexed  
D. On back E. In pit F. N. D. G. N. D.  
VI. None.  
VII. B. 13 C. 2271.  
VIII. 20 inches below the surface.  
IX. No bones recovered.  
X. "Extended on back knees flexed to right."

I. WP2269. II. 320L110. III. Adult. IV. N. D.  
V. A. Single B. N. D. C. Extended D. On back  
E. N. D. F. N. D. G. N. D.  
VI. None.  
VII. B. >20 C. 2421.

WP2269 Continued

VIII. 30 inches below the surface.

IX. No bones recovered.

I. WP2270. II. 270L110. III. Adult. IV. N. D.

V. A. Multiple, with 2271 B. Bundle burial C. --  
D. -- E. In pit F. 4.5 feet x 3.2 feet x ?  
G. --.

VI. None.

VII. None.

VII. B. 15 C. 2271.

VIII. 20 inches below the surface.

IX. A few skull fragments recovered.

I. WP2271. II. 270L110. III. N. D. IV. N. D.

V. A. Multiple, with 2270 B. N. D. C. N. D.  
D. N. D. E. In pit F. 4.5 feet x 3.2 feet  
x ? G. N. D.

VI. None.

VII. B. 13 C. 2270.

VIII. N. D.

IX. N. D.



I. WP2272. II. 250L110. III. N. D. IV. N. D.  
 V. A. Single B. N. D. C. Extended D. N. D.  
 E. In pit F. 8.0 feet x 3.4 feet x ? G. ENE-WSW.  
 VI. None.  
 VII. B. >20 C. 2274.  
 VIII. N. D.  
 IX. N. D.

I. WP2273. II. 250L110. III. Infant. IV. N. D.  
 V. A. Single B. Disturbed C. Extended D. On  
 back E. In pit F. Unreliable data G. S-N.  
 VI. Potsherds, above skull, 81WP.  
 Yellow paint, left side of skull, 90WP.  
 VII. B. >20 C. 2272.  
 VIII. 15 inches below the surface.  
 IX. N. D.

I. WP2274. II. 240L110: No Data.

I. WP2274a. II. 310L100. III. Adult. IV. N. D.  
 V. A. Single B. Disturbed C. -- D. -- E. N. D.  
 F. -- G. N. D.

## WP2274a Continued

VI. None.

VII. B. >20 C. 2272.

VIII. 20 inches below the surface.

IX. A few bone fragments recovered.

I. WP2275. II. 160L10. III. Infant. IV. N. D.

V. A. Single B. N. D. C. Extended D. On back

E. N. D. F. -- G. N. D.

VI. None.

VII. B. >20 C. 2260.

VIII. 20 inches below the surface.

IX. A few bone fragments recovered.

I. WP2276. II. 240L110. III. Adult. IV. N. D.

V. A. Single B. Disturbed C. -- D. --

E. In pit F. N. D. G. N. D.

VI. None.

VII. B. >20 C. 2274.

VIII. 20 inches below the surface.

IX. A few fragments of bone recovered.

I. WP2277. II. 310L110. III. Adult. IV. N. D.  
 V. A. Single B. Disturbed C. -- D. --  
 E. N. D. F. -- G. N. D.  
 VI. None.  
 VII. B. >20 C. 2276.  
 VIII. 18 inches below the surface.  
 IX. N. D.

I. WP2278. II. 310L110. III. Adult. IV. N. D.  
 V. A. Single B. Disturbed C. -- D. --  
 E. N. D. F. -- G. N. D.  
 VI. None.  
 VII. B. >20 C. N. D.  
 VIII. 10 inches below the surface.  
 IX. Long bones and a few skull fragments recovered.  
 X. "Most of skull plowed away."

I. WP2279. II. 300L10. III. Infant. IV. N. D.  
 V. A. Single B. Disturbed C. -- D. --  
 E. In pit F. -- G. N. D.  
 VI. None.  
 VII. B. 12 C. N. D.

WP2279 Continued

VIII. N. D.

IX. No bones recovered.

I. WP2280. II. 310L10. III. Child. IV. N. D.

V. A. Single B. Disturbed C. -- D. --

E. N. D. F. -- G. N. D.

VI. None.

VII. B. 10 C. N. D.

VIII. 10 inches below the surface.

IX. Fragmentary skull recovered.

I. WP2281. II. 300L70. III. Adult. IV. N. D.

V. A. Single B. N. D. C. N. D. D. N. D.

E. In pit F. N. D. G. N. D.

VI. None.

VII. B. 14 C. N. D.

VIII. 19 inches below the surface.

IX. Skull recovered.

X. Skull only part of skeleton found.

- I. WP2282. II. 300L120. III. Adult. IV. N. D.  
 V. A. Single B. Partially articulated C. Extended  
 D. On back E. In pit F. 5.8 feet x 2.4 feet  
 x ? G. ESE-WNW.  
 Vi. Broken urn, over head, 60WP.  
 Small water bottle 2 feet left of shoulder, 61WP.  
 VII. B. >20 C. 2283.  
 VIII. 14 inches below the surface.  
 IX. N. D.

- I. WP2283. II. 300L120. III. Adult. IV. N. D.  
 V. A. Single B. Bundle C. -- D. --  
 E. In pit F. N. D. G. --.  
 VI. None.  
 VII. B. >20 C. 2282.  
 VIII. 14 inches below the surface.  
 IX. Some bone fragments recovered.

- I. WP2284. II. 300L120. III. Adult. IV. N. D.  
 V. A. Single B. Disturbed C. -- D. --  
 E. In pit F. N. D. G. N. D.  
 VI. None.  
 VII. B. >20 C. 2282.

WP2284 Continued

VIII. 11 inches below the surface.

IX. A few bone fragments recovered.

I. WP2285. II. 310L130. III. N. D. IV. N. D.

V. A. Single B. N. D. C. N. D. D. N. D.

E. In pit F. N. D. G. N. D.

VI. None.

VII. B. >20 C. 2284.

VIII. N. D.

IX. N. D.

I. WP2286. II. 270L140. III. Adult. IV. N. D.

V. A. Single B. Disturbed C. Extended D. On  
back E. In pit F. N. D. G. ESE-WNW.

VI. None.

VII. B. 10 C. N. D.

VIII. 4 inches below the surface.

IX. No bones recovered.

I. WP2287: Number used twice. There is no data for  
WP2287 in square 280L120. There is data for SW2287.

- I. WP2288. II. 280L120. III. Child. IV. N. D.  
 V. A. Single B. Disturbed C. -- D. -- E. In  
 pit F. N. D. G. N. D.  
 VI. None.  
 VII. B. 6 C. N. D.  
 VIII. 10 inches below the surface.  
 IX. A few bones recovered.  
 X. Badly disturbed by plow.

- I. WP2289. II. 270L80. III. Adult. IV. N. D.  
 V. A. Multiple, with 2290 B. Partially articulated  
 C. Extended D. On back E. In pit F. 9.0 feet  
 x 8.8 feet x ? G. E-W.  
 VI. Small water bottle, outside upper right leg, 67WP.  
 Green paint, between legs, 66WP.  
 VII. B. 6 C. 2290.  
 VIII. 13 inches below surface.  
 IX. About one half of skeleton recovered.

- I. WP2290. II. 270L80. III. Adult. IV. N. D.  
 V. A. Multiple with 2289 B. Disturbed C. --  
 D. -- E. In pit F. 9.0 feet x 8.8 feet x ?  
 G. N. D.

WP2290 Continued

- VI. None.
- VII. B. 8 C. 2289.
- VIII. 6 inches below the surface.
- IX. No bones recovered.
- X. Badly broken up by plow.

- I. WP2291. II. 270L60. III. Infant. IV. N. D.
- V. N. D.
- VI. None.
- VII. N. D.
- VIII. N. D.
- IX. N. D.
- X. The records for this burial are a complete mess.

- I. WP2292. II. 270L60. III. Adult. IV. N. D.
- V. A. Single B. Partially articulated C. Extended  
D. On back E. In pit F. 5.8 feet x 2.1 feet  
x ? G. W-E.
- VI. None.
- VII. B. 12 C. N. D.
- VIII. 20 inches below the surface.
- IX. Almost entire skeleton recovered.



I. WP2293. II. 270L30. III. Adult. IV. N. D.  
V. A. Single B. Disturbed C. -- D. --  
E. In pit F. N. D. G. N. D.  
VI. None.  
VII. B. 9 C. 2472.  
VIII. 15 inches below surface.  
IX. A few bone fragments recovered.

I. WP2294. II. 300L30. III. Adult. IV. N. D.  
V. A. Single B. Disturbed C. Extended D. On  
back E. In pit F. N. D. G. N. D.  
VI. None.  
VII. B. 7 C. 2296.  
VIII. 15 inches below the surface.  
IX. Only a few bone fragments recovered.

I. WP2295. II. 300L30. III. Child. IV. N. D.  
V. A. Single, (may be multiple with 2296) B. N. D.  
C. Extended D. On back E. In pit F. N. D.  
G. N. D.  
VI. None.  
VII. B. 7 C. 2296.  
VIII. 20 inches below the surface.

## WP2295 Continued

- IX. A very few bone fragments recovered.
- X. "Found in a garbage pit beside skeleton 2296."
- I. WP2296. II. 300L40. III. Adult. IV. N. D.
- V. A. Single, (may be multiple with 2295) B. N. D.  
C. Extended D. On back E. In pit F. N. D.  
G. N. D.
- VI. Small triangular projectile point, outside lower right leg, 51WP.  
Deer antler "flakers", outside lower right leg, 50WP.
- VII. B. 7 C. 2295.
- VIII. 20 inches below the surface.
- IX. Entire skeleton recovered.
- X. Not fully excavated but removed.
- I. WP2297. II. 310L80. III. N. D. IV. N. D.
- V. A. Single B. N. D. C. N. D. D. N. D.  
E. N. D. F. N. D. G. N-S.
- VI. None.
- VII. B. 18 C. 2281.
- VIII. N. D.
- IX. N. D.

- I. WP2298. II. 280L90. III. Child. IV. N. D.  
 V. A. Single B. Bundle C. -- D. -- E. N. D.  
 F. -- G. N. D.  
 VI. None.  
 VII. B. 13 C. 2256.  
 VIII. 6 inches below the surface.  
 IX. Long bones and a fragmentary skull recovered.

- I. WP2299. II. 270-0. III. Child. IV. N. D.  
 V. A. Single B. Disturbed C. -- D. --  
 E. In pit F. N. D. G. N. D.  
 VI. None.  
 VII. B. 6 C. N. D.  
 VIII. 8 inches below the surface.  
 IX. No bones recovered.

- I. WP2300. II. 280L10. III. Adult. IV. N. D.  
 V. A. Single B. Articulated (see X below)  
 C. Partially flexed D. On face E. In pit  
 F. 7.0 feet x 2.8 feet x ? G. S-N.  
 VI. None.  
 VII. B. 18 C. 2299.

WP2300. Continued

VIII. 18 inches below the surface.

IX. N. D.

X. Skeleton was buried headless.

I. WP2301. II. 220-0. III. N. D. IV. N. D.

V. A. Single B. N. D. C. N. D. D. N. D.

E. In pit F. N. D. G. ENE-WSW.

VI. None.

VII. B. >20 C. N. D.

VIII. N. D.

IX. N. D.

I. WP2302. II. N. D. III. Infant. IV. N. D.  
Found in back dirt; apparently missed by diggers.

I. WP2303. II. 180-0: No data.

I. WP2303a. II. 120-0. III. Adult. IV. N. D.

V. A. Single B. Partially articulated C. Extended

D. On back E. In pit F. N. D. G. SE-NW.

## WP2303a Continued

VI. None.

VII. B. >20 C. 2525.

VIII. 20 inches below the surface.

IX. Skull fragments and long bones recovered.

I. WP2304. II. 110R0. III. Adult. IV. N. D.

V. A. Single B. Skull only C. -- D. --

E. In pit F. N. D. G. --.

VI. bottom half of bowl (in fragments), above skull, 49WP.

VII. B. >25 C. 2525.

VIII. 17 inches below the surface.

IX. Skull fragments recovered.

I. WP2305. II. 170-0. III. Adult. IV. N. D.

V. A. Multiple, with 2306 B. N. D. C. Extended

D. On back E. In pit F. 8.5 feet x 4.5 feet  
x ? G. E-W.

VI. None.

VII. B. 16 C. 2306.

VIII. 12 inches below the surface.

IX. A few fragments of bone recovered.

X. Above 2306.

- I. WP2306. II. 170-0. III. Adult. IV. N. D.  
 V. A. Multiple, with 2305 B. N. D. C. Extended  
 D. On back E. In pit F. 8.5 feet x 4.5 feet  
 x ? G. N. D.  
 VI. None.  
 VII. B. 16 C. 2305.  
 VIII. 14 inches below the surface.  
 IX. Bone badly decayed; a few fragments recovered.  
 X. below 2305.

I. WP2307: No data.

I. WP2308. II. 320L10: No data.

- I. WP2309. II. 320L10. III. Adult. IV. N. D.  
 V. A. Single B. Partially articulated C. Extended  
 D. On back E. In pit F. N. D. G. N. D.  
 VI. None.  
 VII. B. 5 C. N. D.  
 VIII. 20 inches below the surface.  
 IX. Almost entire skeleton recovered.

- I. WP2310. II. 310L30. III. Adult. IV. Male.
- V. A. Single B. Partially articulated C. Extended  
D. On back E. In pit F. 7.5 feet x 2.4 feet  
x ? G. NNE-SSW.
- VI. Broken disc, right rear of skull, 136WP.  
Pottery fragments, back of skull, 139WP.  
2 bone awls, above left shoulder, 141WP.  
Bird beak awl, inside right knee, 142WP.  
Fragment of pot, outside lower left leg, 140WP.  
Red paint, in 140WP, 140WP.  
Bird claw, just below right hip, between legs,  
143WP.  
Mica, end of right foot, 144WP.  
Garfish snout, above right shoulder, 145WP.
- VII. B. 6 C. 2311.
- VIII. 38 inches below the surface.
- IX. N. D.
- I. WP2311. II. 310L30. III. Adult. IV. N. D.
- V. A. Single B. Skull only C. -- D. --  
E. In pit F. N. D. G. --.
- VI. None.
- VII. B. 8 C. 2312.
- VIII. 20 inches below the surface.
- IX. Skull recovered.
- X. --.

- I. WP2312. II. 310L20. III. Adult. IV. N. D.  
 V. A. Single B. Partially articulated C. Extended  
 D. On back E. In pit F. 6.8 feet x 3.0 feet  
 x ? G. E-W.  
 VI. Bird beak awl, 1 foot outside left hip, 90WP.  
 VII. B. 11 C. 2311.  
 VIII. 20 inches below the surface.  
 IX. Entire skeleton recovered.
- I. WP2313: No data.
- I. WP2314. II. 310L40. III. Adult (21-45).  
 IV. Female.  
 V. A. Single B. Partially articulated C. Extended  
 D. On back E. In pit F. 6.5 feet x 2.5 feet  
 x ? G. E-W.  
 VI. Water bottle (Moundville Engraved), above skull,  
 83WP.  
 Large sherd, above skull, 84WP.  
 VII. B. 10 C. 2223.  
 VIII. 12 inches below the surface.  
 IX. Most of skeleton recovered.



- I. WP2315. II. 320L50. III. Infant. IV. N. D.  
 V. A. Multiple, with 2316 B. -- C. N. D. D. N. D.  
 E. In pit F. N. D. G. --.  
 VI. none.  
 VII. B. 18 C. 2316.  
 VIII. 30 inches below the surface.  
 IX. No bones recovered.  
 X. "Crammed into post hole beneath skeleton 2316."

- I. WP2316. II. 320L50. III. Adult. IV. N. D.  
 V. A. Multiple, with 2315 B. Articulated  
 C. Extended D. On back E. In pit F. N. D.  
 G. SSE-NNW.  
 VI. 11 deer scapulae, at feet, N. D.  
 VII. B. 18 C. 2315.  
 VIII. 24 inches below the surface.  
 IX. Entire skeleton recovered.

- I. WP2316a. II. 90L20: No data.

- I. WP2317. II. 320L100. III. Adult. IV. Male.  
 V. A. Single B. N. D. C. Extended D. On back  
 E. N. D. F. -- G. N. D.  
 VI. Water bottle (crushed), above skull, 85WP.  
 3 Bone awls, by upper right arm, 88WP.  
 Pottery discoidal, between legs, 89WP.  
 6 shells, by right hand, 86WP.  
 Stone by right hand, 87WP.  
 VII. B. >20 C. 2278.  
 VIII. 24 inches below the surface.  
 IX. N. D.

- I. WP2318. II. 300L40. III. N. D. IV. N. D.  
 V. N. D.  
 VI. Broken pot, by right shoulder, N. D.  
 VII. B. 13 C. 2295.  
 VIII. 18 inches below the surface.  
 IX. N. D.  
 X. Not fully excavated.

- I. WP2319. II. 300L40. III. Adult. IV. N. D.  
 V. A. Single B. Disturbed C. -- D. --  
 E. N. D. F. -- G. N. D.  
 VI. Terrapin shell, above skeleton, 99WP.  
 VII. B. 12 C. 2295.

WP2319 Continued

VIII. 6 inches below the surface.

IX. A few bones recovered.

X. Badly disturbed by plow.

I. WP2319a. II. 310L20: No data.

I. WP2320. II. 300L10. III. Child. IV. N. D.

V. A. Single B. Disturbed C. -- D. --

E. N. D. F. -- G. N. D.

VI. None.

VII. B. 14 C. N. D.

VIII. 20 inches below the surface.

IX. No bones recovered.

I. WP2321. II. N. D. III. Child. IV. N. D.

V. N. D.

VI. Discoidal stone, N. D.

VII. N. D.

VIII. 20 inches below the surface.

IX. A few bone fragments recovered.

I. WP2322. II. 310L10. III. Adult. IV. Male.  
 V. A. Single B. Disturbed C. Extended D. On  
 back E. N. D. F. -- G. N. D.  
 VI. None.  
 VII. B. 12 C. 2310.  
 VIII. 24 inches below the surface.  
 IX. Entire skeleton recovered.

I. WP2323. II. 310L40. III. Adult. IV. N. D.  
 V. A. Single B. Disturbed C. -- D. --  
 E. N. D. F. -- G. N. D.  
 VI. None.  
 VII. B. 10 C. 2314.  
 VIII. 5 inches below the surface.  
 IX. Fragments of skull recovered.

I. WP2324. II. 300L30. III. Adult (17).  
 IV. Female.  
 V. A. Single (may be multiple with 2242a) B. N. D.  
 C. Extended D. On back E. In pit F. N. D.  
 G. N. D.  
 VI. None.

WP2324 Extended

VII. B. >1 C. 2242a.

VIII. 18 inches below the surface.

IX. Most of skeleton recovered.

I. WP2325. II. N. D. III. Adult. IV. N. D.

V. A. N. D. B. N. D. C. Extended D. On back

E. N. D. F. -- G. N. D.

VI. None.

VII. N. D.

VIII. 10 inches below the surface.

IX. Skeleton in poor condition; no bones recovered.

I. WP2326. II. N. D. III. Adult. IV. N. D.

V. A. N. D. B. N. D. C. Extended D. On back

E. N. D. F. -- G. N. D.

VI. Water bottle (broken), between legs, 65WP.

VII. N. D.

VIII. 30 inches below the surface.

IX. N. D.

I. WP2327. II. N. D. III. Adult. IV. N. D.  
 V. No data; skeleton only partially uncovered.  
 VI. Bowl (serrated edges), N. D., N. D.  
 VII. N. D.  
 VIII. 12 inches below the surface.  
 IX. N. D.

I. WP2328. II. N. D. III. Child. IV. N. D.  
 V. A. N. D. B. N. D. C. Extended D. N. D.  
 E. N. D. F. -- G. N. D.  
 VI. None.  
 VII. N. D.  
 VIII. 20 inches below the surface.  
 IX. Parts of skull, long bones, and ribs recovered.

I. WP2329. II. N. D. III. Adult. IV. N. D.  
 V. A. N. D. B. Disturbed C. -- D. --  
 E. N. D. F. -- G. N. D.  
 VI. None.  
 VII. N. D.  
 VIII. 15 inches below the surface.  
 IX. No bones recovered.

- I. WP2330. II. N. D. III. Adult. IV. N. D.  
 V. A. N. D. B. N. D. C. Extended D. On back  
 E. N. D. F. -- G. N. D.  
 VI. Crushed bowl (incised), behind skull, 93WP.  
 Fragments of large shallow bowl, N. D., 92WP.  
 Red paint, in 93WP, 93WP.  
 VII. N. D.  
 VIII. 16 inches below the surface.  
 IX. Fragmentary skull recovered.

- I. WP2331. II. N. D. III. Child. IV. N. D.  
 V. A. N. D. B. Partially articulated C. Extended  
 D. On back E. N. D. F. -- G. N. D.  
 VI. None.  
 VII. N. D.  
 VIII. 16 inches below the surface.  
 IX. Fragmentary skull and long bone parts recovered.

- I. WP2332. II. N. D. III. Adult. IV. N. D.  
 V. A. N. D. B. N. D. C. Extended D. On back  
 E. N. D. F. -- G. N. D.  
 VI. None.  
 VII. N. D.

WP2332 Continued.

VIII. 4 inches below the surface.

IX. No bones recovered.

I. WP2333. II. N. D. III. Adult. IV. N. D.

V. A. N. D. B. Disturbed C. -- D. --

E. N. D. F. -- G. N. D.

VI. None.

VII. N. D.

VIII. 18 inches below the surface.

IX. Right femur only bone found; no bones recovered.

I. WP2334: No data.

I. WP2335. II. N. D. III. Infant: No other data.

I. WP2336. II. N. D. III. Adult. IV. N. D.

V. A. N. D. B. N. D. C. Extended D. On back

E. N. D. F. -- G. N. D.

VI. None.



## WP2336 Continued

VII. N. D.

VIII. 24 inches below the surface.

IX. No bones recovered.

X. "Head extends beneath fireplace."

I. WP2337. II. N. D. III. Adult(60). IV. Male.

V. A. N. D. B. Articulated C. Extended D. On  
back E. N. D. F. -- G. N. D.

VI. Broken pot, above left shoulder, 91WP.

VII. N. D.

VIII. 24 inches below the surface.

IX. "Almost entire skeleton recovered."

I. WP2338: No data.

I. WP2339: No data.

I. WP2340: No data.

I. WP2341. II. N. D. III. Adult. IV. N. D.  
 V. A. N. D. B. Disturbed C. -- D. --  
 E. N. D. F. -- G. N. D.  
 VI. Sherds, N. D., 97WP.  
 VII. N. D.  
 VIII. 6 inches below the surface.  
 IX. Fragments of skull and long bones recovered.

I. WP2342. II. N. D. III. Infant. IV. N. D.  
 V. A. N. D. B. N. D. C. Extended D. N. D.  
 E. N. D. F. -- G. N. D.  
 VI. None.  
 VII. N. D.  
 VIII. 12 inches below the surface.  
 IX. A few bone fragments recovered.

I. WP2343. II. N. D. III. Adult. IV. N. D.  
 V. A. N. D. B. Disturbed C. -- D. --  
 E. N. D. F. -- G. N. D.  
 VI. None.  
 VII. N. D.  
 VIII. 12 inches below the surface.

## WP2343 Continued

IX. N. D.

X. Aboriginal disturbance.

I. WP2344. II. N. D. III. Adult. IV. N. D.

V. A. N. D. B. Disturbed C. -- D. --

E. N. D. F. -- G. N. D.

VI. None.

VII. N. D.

VIII. 6 inches below the surface.

IX. N. D.

X. Disturbed by plow.

I. WP2345. II. N. D. III. Child. IV. N. D.

V. A. N. D. B. Articulated C. Extended D. On  
back E. N. D. F. -- G. N. D.

VI. None.

VII. N. D.

VIII. 38 inches below the surface.

IX. No bones recovered.

- I. WP2347. II. N. D. III. Adult. IV. N. D.  
V. A. Multiple, with 2348 B. Partially articulated  
C. Extended D. On back E. N. D. F. --  
G. N. D.  
VI. Mica, between left hand and body, 95WP.  
VII. N. D.  
VIII. 10 inches below the surface.  
IX. Fragments of bone recovered.

- I. WP2348. II. N. D. III. Adult. IV. N. D.  
V. A. Multiple, with 2347 B. Articulated  
C. Extended D. On back E. N. D. F. --  
G. N. D.  
VI. None.  
VII. N. D.  
VIII. 12 inches below the surface.  
IX. Almost entire skeleton recovered.

- I. WP2349. II. N. D. III. Adult. IV. N. D.  
V. A. N. D. B. N. D. C. Extended D. On back  
E. N. D. F. -- G. N. D.  
VI. None.  
VII. N. D.

WP2349 Continued

VIII. 12 inches below the surface.

IX. Fragmentary skull and long bones recovered.

I. WP2350. II. N. D. III. Child. IV. N. D.

V. N. D.

VI. None.

VII. N. D.

VIII. 9 inches below the surface.

IX. Fragmentary skull and one long bone recovered.

I. WP2351. II. N. D. III. Adult. IV. N. D.

V. N. D.

VI. None.

VII. N. D.

VIII. 9 inches below the surface.

IX. Entire skeleton recovered.

I. WP2352. II. N. D. III. Child. IV. N. D.

V. A. N. D. B. Disturbed C. -- D. --

E. N. D. F. -- G. N. D.

## WP2352 Continued

- VI. None.
- VII. N. D.
- VIII. 12 inches below the surface.
- IX. Entire skeleton of very rotten bone recovered.

- I. WP2353. II. N. D. III. Child. IV. N. D.
- V. N. D.
- VI. None.
- VII. N. D.
- VIII. 18 inches below the surface.
- IX. N. D.

- I. WP2354. II. N. D. III. N. D. IV. N. D.
- V. A. N. D. B. N. D. C. Extended D. On back  
E. N. D. F. -- G. N. D.
- VI. Bowl (plain), above skull, 94WP.
- VII. N. D.
- VIII. 8 inches below the surface.
- IX. Almost entire skeleton recovered.

I. WP2355. II. N. D. III. Infant. IV. N. D.  
Bones thrown out of a drainage ditch being  
constructed.

I. WP2356. II. N. D. III. Adult. IV. N. D.  
V. A. N. D. B. N. D. C. Extended D. On back  
E. N. D. F. -- G. N. D.  
VI. None.  
VII. N. D.  
VIII. 13 inches below the surface.  
IX. N. D.

I. WP2357: No data.

I. WP2358. II. N. D. III. Adult. IV. N. D.  
V. A. N. D. B. N. D. C. Extended D. On back  
E. N. D. F. -- G. N. D.  
VI. None.  
VII. N. D.  
VIII. 8 inches below the surface.  
IX. N. D.

I. WP2359: No data.

I. WP2360. II. N. D. III. Adult. IV. N. D.  
V. A. N. D. B. N. D. C. Extended D. On back  
E. N. D. F. -- G. N. D.  
VI. None.  
VII. N. D.  
VIII. 6 inches below the surface.  
IX. A few bone fragments recovered.

I. WP2361. II. N. D. III. Adult. IV. N. D.  
V. A. N. D. B. N. D. C. Extended D. On back  
E. N. D. F. -- G. N. D.  
VI. None.  
VII. N. D.  
VIII. 4 inches below the surface.  
IX. Almost entire skeleton recovered.

I. WP2362. II. N. D. III. Adult. IV. N. D.  
V. A. N. D. B. N. D. C. Extended D. On back  
E. N. D. F. -- G. N. D.



## WP2362 Continued

VI. None.

VII. N. D.

VIII. 16 inches below the surface.

IX. Almost entire skeleton recovered.

X. Probably disturbed 2363.

I. WP2363. II. N. D. III. Adult. IV. N. D.

V. A. N. D. B. Disturbed C. -- D. --

E. N. D. F. -- G. N. D.

VI. None.

VII. N. D.

VIII. 16 inches below the surface.

IX. A few bone fragments recovered.

X. Bones piled together; probably disturbed when 2362 or 2364 were buried.

I. WP2364. II. N. D. III. N. D. IV. N. D.

V. A. N. D. B. Disturbed C. -- D. --

E. N. D. F. -- G. N. D.

VI. None.

VII. N. D.

VIII. 16 inches below the surface.

## WP2364 Continued

- IX. A fragmentary skull recovered.  
X. Part of 2362, 2363 mess.

- I. WP2365. II. N. D. III. Adult. IV. N. D.  
V. A. N. D. B. N. D. C. Partially flexed  
D. Knees flexed to right E. N. D. F. --  
G. N. D.  
VI. None.  
VII. N. D.  
VIII. 14 inches below the surface.  
IX. No bones recovered.

- I. WP2366. II. N. D. III. Adult. IV. N. D.  
V. A. N. D. B. N. D. C. Extended D. On back  
E. N. D. F. -- G. N. D.  
VI. None.  
VII. N. D.  
VIII. 14 inches below the surface.  
IX. A few bone fragments recovered.

I. WP2367. II. N. D. III. Adult. IV. N. D.  
 V. A. N. D. B. N. D. C. Extended D. On back  
 E. N. D. F. ~~---~~ G. N. D.  
 VI. None.  
 VII. N. D.  
 VIII. 14 inches below the surface.  
 IX. A major part of the skeleton recovered.

I. WP2368. II. N. D. III. Adult. IV. N. D.  
 V. A. N. D. B. Disturbed C. -- D. --  
 E. N. D. F. -- G. N. D.  
 VI. None.  
 VII. N. D.  
 VIII. 9 inches below the surface.  
 IX. A few bones recovered.

I. WP2369: No data.

I. WP2370. II. N. D. III. Adult. IV. N. D.  
 V. A. N. D. B. N. D. C. Extended D. On back  
 E. N. D. F. -- G. N. D.

## WP2370 Continued

- VI. None.
- VII. N. D.
- VIII. 8 inches below the surface.
- IX. No bones recovered.

I. WP2371. II. N. D. III. Adult. IV. N. D.

V. A. N. D. B. Disturbed C. -- D. --

E. N. D. F. -- G. N. D.

VI. None.

VII. N. D.

VIII. 30 inches below the surface.

IX. A few teeth recovered.

I. WP2372: No data.

I. WP2373: Data confused.

I. WP2374. II. N. D. III. Adult. IV. N. D.

V. A. N. D. B. Disturbed C. -- D. --

E. N. D. F. -- G. N. D.

## WP2374 Continued

- VI. None.
- VII. N. D.
- VIII. 6 inches below the surface.
- IX. Bone fragments recovered.
- X. Badly disturbed by plow.

- I. WP2376. II. N. D. III. Child. IV. N. D.
- V. A. N. D. B. N. D. C. Extended D. On back
- E. N. D. F. -- G. N. D.

- VI. None.
- VII. N. D.
- VIII. 6 inches below the surface.
- IX. Some bone fragments recovered.

- I. WP2377. II. N. D. LII. Child. IV. N. D.
- V. A. N. D. B. Disturbed C. -- D. --
- E. N. D. F. -- G. N. D.

- VI. None.
- VII. N. D.
- VIII. 6 inches below the surface.
- IX. A few bone fragments recovered.

I. WP2378: No data.

I. WP2379. II. N. D. III. Adult. IV. N. D.

V. A. N. D. B. N. D. C. Extended D. On back

E. N. D. F. -- G. N. D.

VI. None.

VII. N. D.

VIII. 12 inches below the surface.

IX. Skeleton, minus skull, recovered.

X. No skull found.

I. WP2380. II. N. D. III. Infant. IV. N. D.

V. A. N. D. B. Disturbed C. Extended D. N. D.

E. N. D. F. -- G. N. D.

VI. None.

VII. N. D.

VIII. 8 inches below the surface.

IX. No bones recovered.

X. Plowed through.

I. WP2381 (changed from WP2185). II. N. D.

III. Adult. IV. N. D.

V. A. N. D. B. Disturbed C. -- D. --

E. N. D. F. -- G. N. D.

VI. None.

VII. N. D.

VIII. 4 inches below the surface.

IX. No bones recovered.

X. Plowed through.

I. WP2382 (changed from WP2184): No other data.

I. WP2383 (changed from WP2178): No other data.

I. WP2385: No data.

I. WP2394: No data.

I. WP2399. II. N. D. III. Adult: No other data.

I. WP2400. II. N. D. III. Adult. IV. N. D.

V. A. N. D. B. Disturbed No other data.

I. WP2401. II. N. D. III. Adult: No other data.

I. WP2402. II. N. D. III. Child: No other data.

I. WP2403. II. N. D. III. Adult. IV. N. D.

V. A. N. D. B. Disturbed C. Extended

No other data.

I. WP2404. II. N. D. III. Adult. IV. N. D.

V. A. N. D. B. N. D. C. Extended D. On back

No other data.

I. WP2405. II. 330L40. III. Child. IV. N. D.

V. A. Single B. N. D. C. Extended D. On back

E. N. D. F. -- G. NNW-SSE.

VI. None.



WP2405 Continued

VII. B. 15 C. 2425.

VIII. 20 inches below the surface.

IX. Fragmentary skull and long bones recovered.

I. WP2406. II. N. D. III. Adult. No other data.

I. WP2407. II. N. D. III. Adult. IV. N. D.

V. A. N. D. B. Bundle C. -- D. --

E. N. D. F. -- G. --.

VI. None.

VII. N. D.

VIII. 20 inches below the surface.

IX. Fragmentary skull recovered.

I. WP2408. II. N. D. III. Adult. IV. Male.

V. A. N. D. B. Bundle burial C. -- D. --

E. N. D. F. -- G. --.

VI. Bone awl, N. D., 98WP.

VII. N. D.

VIII. 18 inches below the surface.

IX. Bone fragments recovered.

I. WP2409. II. N. D. III. Adult. IV. N. D.

No other data.

I. WP2410. II. N. D. III. Child. IV. N. D.

V. A. N. D. B. N. D. C. Extended D. On back

E. N. D. F. -- G. N. D.

VI. None.

VII. N. D.

VIII. 20 inches below the surface.

IX. Fragmentary skull and a few long bones recovered.

I. WP2411. II. N. D. III. Adolescent. IV. N. D.

V. A. N. D. B. N. D. C. Extended D. On back

E. N. D. F. -- G. N. D.

VI. None.

VII. N. D.

VIII. 20 inches below the surface.

IX. Vertebrae and a few long bones recovered.

I. WP2412. II. 340L170. III. Adult. IV. N. D.

V. A. Single B. Articulated C. Extended D. On

## WP2412 Continued

back E. In pit F. N. D. g. W-E.

VI. None.

VII. B. >20 C. N. D.

VIII. 14 inches below the surface.

IX. Fragmentary skull and long bones recovered.

I. WP2413. II. N. D. III. Adult. IV. N. D.

V. A. N. D. B. N. D. C. Extended D. On back

E. N. D. F. -- G. N. D.

VI. None.

VII. N. D.

VIII. 20 inches below the surface.

IX. No bones recovered.

I. WP2414. II. N. D. III. Adult. IV. N. D.

V. A. N. D. B. N. D. C. Extended D. On back

E. N. D. F. -- G. N. D.

VI. Plain water bottle, N. D., 180WP.  
 Flint chips, N. D., 109WP.  
 Stone "tool sharpener", N. D., 110WP.  
 "Whetstone", N. D., 111WP.  
 "Ceremonial" axe, N. D., 112WP.  
 "Ceremonial" axe, N. D., 113WP.  
 3 bear tusks (1 engraved), N. D., 114WP.  
 4 bone "flint flakers", N. D., 115WP.  
 Other incisor, N. D., 116WP.

## WP2414 Continued

VII. N. D.

VIII. 16 inches below the surface.

IX. N. D.

I. WP2415. II. 340L130. III. Adult. IV. N. D.

V. A. Single B. Disturbed C. Extended D. On  
back E. N. D. F. -- G. S-N.

VI. None.

VII. B. 2 C. 2416.

VIII. 6 inches below the surface.

IX. Parts of long bones recovered.

I. WP2416. II. 340L120. III. Adult. IV. N. D.

V. A. Single B. Partially articulated C. Extended  
D. On back E. In pit F. N. D. G. E-W.

VI. None.

VII. B. 10 C. 2417.

VIII. 12 inches below the surface.

IX. Almost entire skeleton recovered.

X. Pit above that of 2417.

- I. WP2417. II. 330L120. III. Adult. IV. N. D.  
V. A. Multiple, with 2449 B. Partially articulated  
C. Extended D. On back E. In pit F. N. D.  
G. N-S.  
VI. Large bowl (black with scroll), inverted over  
head, 121WP.  
Bowl, (red rim, white cross), N. D., 122WP.  
VII. B. 10 C. 2416.  
VIII. 14 inches below the surface.  
IX. Skull and long bones recovered.  
X. Beneath 2416.

- I. WP2418. II. 320L120. III. Child. IV. N. D.  
V. A. Multiple, with 2419 B. N. D. C. Extended  
D. On back E. In pit F. N. D. G. E-W.  
VI. None.  
VII. B. 11 C. 2419.  
VIII. 8 inches below the surface.  
IX. Skull and long bones recovered.  
X. "Very young child probably a year old."

- I. WP2419. II. 320L120. III. Child. IV. N. D.  
V. A. Multiple, with 2418 B. N. D. C. Extended

## WP2419 Continued

- D. On back E. In pit F. N. D. G. S-N.
- VI. None.
- VII. B. 11 C. 2418.
- VIII. 8 inches below the surface.
- IX. Fragments of skull and some bones recovered.
- X. "Just a little older than child 2418".
- 
- I. WP2420. II. 330L110. III. Adult. IV. N. D.
- V. A. Single B. Partially articulated C. Extended  
D. On back E. In pit F. N. D. G. E-W.
- VI. None.
- VII. B. 7 C. 2417.
- VIII. 16 inches below the surface.
- IX. Fragments of skull and portions of long bones recovered.
- 
- I. WP2421. II. 330L110. III. Adult. IV. N. D.
- V. A. Single B. Partially articulated C. Extended  
D. On back E. In pit F. N. D. G. E-W.
- VI. Fragment of greenstone axe, N. D., 118WP.  
Broken pot, N. D., 119WP.
- VII. B. 6 C. 2269.

## WP2421 Continued

- VIII. 12 inches below the surface.  
IX. A few bone fragments recovered.

- I. WP2422. II. 340L100. III. Adult. IV. N. D.  
V. A. Single B. Disturbed C. Extended D. On  
back E. In pit F. N. D. G. W-E.  
VI. None.  
VII. B. 2 C. 2421.  
VIII. 6 inches below the surface.  
IX. Fragments of long bones recovered.  
X. Plow had disturbed skeleton.

- I. WP2425. II. 340L20. III. Adult. IV. N. D.  
V. A. Single B. Disturbed C. Extended D. N. D.  
E. N. D. F. -- G. SE-NW.  
VI. None.  
VII. B. 15 C. 2405.  
VIII. 18 inches below the surface.  
IX. Entire skeleton recovered.

I. WP2426: No data; number used South of "W".

I. WP2427. II. 330L10. III. Child. IV. N. D.  
V. A. Single B. N. D. C. Extended D. On back  
E. N. D. F. -- G. NNW-SSE.  
VI. None.  
VII. B. 8 C. 2482.  
VIII. 14 inches below the surface.  
IX. Fragmentary skull recovered.

I. WP2428. II. N. D. III. Child: No other data.

I. WP2429. II. 180L10. III. Adult. IV. N. D.  
V. A. Single B. Disturbed C. Extended D. N. D.  
E. N. D. F. -- G. E-W.  
VI. None.  
VII. B. >20 C. 2433.  
VIII. 4 inches below the surface.  
IX. No bones recovered.  
X. Destroyed by plow.



I. WP2430. II. 180L10. III. Adult. IV. N. D.  
V. A. Single B. N. D. C. Extended D. On left  
side E. N. D. F. -- G. N. D.  
VI. None.  
VII. B. >20 C. 2432.  
VIII. 19 inches below the surface.  
IX. Most bones recovered.

I. WP2431. II. 180L10. III. Adult. IV. N. D.  
V. A. Single B. Bundle C. -- D. -- E. N. D.  
F. -- G. N. D.  
VI. None.  
VII. B. >20 C. 2430.  
VIII. 14 inches below the surface.  
IX. Fragments of bone recovered.

I. WP2432. II. 180L20. III. Adult. IV. N. D.  
V. A. Single B. N. D. C. Extended D. On back  
E. N. D. F. -- G. ESE-WNW.  
VI. None.  
VII. B. >20 C. 2430.  
VIII. 16 inches below the surface.

## WP2432 Continued

IX. About two thirds of skeleton recovered.

X. "On back, knees elevated."

I. WP2433. II. 180L20. III. Adult. IV. N. D.

V. A. Single B. N. D. C. Flexed D. On left side E. N. D. F. -- G. W-(E).

VI. None.

VII. B. 20 C. 2429.

VIII. 8 inches below the surface.

IX. A few bone fragments recovered.

X. Plow had destroyed most of skeleton.

I. WP2434. II. 180L30. III. Child (10-12).

IV. N. D.

V. A. N. D. B. N. D. C. Extended D. On back

E. N. D. F. -- G. E-W.

VI. None.

VII. B. 2 C. N. D.

VIII. 18 inches below the surface.

IX. Fragmentary skull and long bones recovered.

I. WP2435. II. 180L10. III. Adult. IV. N. D.  
V. A. N. D. B. Articulated C. Fully flexed  
D. On left side E. N. D. F. -- G. N. D.  
VI. None.  
VII. N. D.  
VIII. 20 inches below the surface.  
IX. Long bones and fragments of skull recovered.

I. WP2436. II. N. D. III. Adult. IV. N. D.  
V. A. N. D. B. N. D. C. Extended D. On back  
E. N. D. F. -- G. N. D.  
VI. Bowl (broken), N. D., N. D.  
VII. N. D.  
VIII. 46 inches below the surface.  
IX. N. D.

I. WP2437. II. N. D. III. Infant. IV. N. D.  
V. N. D.  
VI. None.  
VII. N. D.  
VIII. 12 inches below the surface.  
IX. Fragments of skeleton recovered.

- I. WP2438. II. 180L10. III. Adult. IV. N. D.  
 V. A. Single B. Disturbed C. -- D. --  
 E. N. D. F. -- G. N. D.  
 VI. None.  
 VII. B. 20 C. 2429.  
 VIII. 6 inches below the surface.  
 IX. A few bone fragments recovered.

- I. WP2439. II. 180L10. III. Adult. IV. N. D.  
 V. A. Single (may have been multiple with 2438)  
 B. Disturbed C. -- D. -- E. N. D. F. --  
 G. N. D.  
 VI. None.  
 VII. B. 20 C. 2438.  
 VIII. 14 inches below the surface.  
 IX. A few bone fragments recovered.

- I. WP2440. II. N. D. III. Adult. IV. N. D.  
 V. A. N. D. B. N. D. C. Extended D. On back  
 E. N. D. F. -- G. N. D.  
 VI. None.  
 VII. N. D.

## WP2440 Continued

VIII. 20 inches below the surface.

IX. Long bones recovered.

I. WP2441. II. N. D. III. Adult. IV. N. D.

V. A. N. D. B. Bundle burial C. -- D. --

E. N. D. F. -- G. --.

VI. None.

VII. N. D.

VIII. 24 inches below the surface.

IX. Long bones recovered.

I. WP2442. II. N. D. III. Adult. IV. N. D.

V. A. N. D. B. N. D. C. Extended D. On back

E. N. D. F. -- G. N. D.

VI. Mussel shell, N. D., 106WP.

VII. N. D.

VIII. 28 inches below the surface.

IX. Fragmentary skull and long bones recovered.

I. WP2443. II. N. D. III. Infant. No other data.

I. WP2444. II. N. D. III. Infant. No other data

I. WP2445. II. N. D. III. Infant. No other data.

I. WP2446. II. N. D. III. Adult. IV. N. D.

V. A. N. D. B. N. D. C. Partially flexed

D. On back E. N. D. F. -- G. N. D.

VI. Red seed (identified in the field as "magnolia"),  
N. D., 103WP.

VII. N. D.

VIII. 14 inches below the surface.

IX. Long bones recovered.

I. WP2447. II. N. D. III. Child (very young).

IV. N. D.

V. A. N. D. B. N. D. C. Extended D. On back

E. N. D. F. -- G. N. D.

VI. Pot (plain), N. D., 104WP.  
Pottery discoidal, N. D., 104WP.  
4 bone "implements", N. D., 107WP.

VII. N. D.

VIII. 20 inches below the surface.

IX. A fragmentary skull recovered.

- I. WP2448. II. N. D. III. Adult. IV. N. D.  
 V. A. N. D. B. N. D. C. Extended D. On back  
 E. N. D. F. -- G. N. D.  
 VI. None.  
 VII. N. D.  
 VIII. 16 inches below the surface.  
 IX. Long bones and skull recovered.

- I. WP2449. II. 340L110. III. Child. IV. N. D.  
 V. A. Multiple, with 2417 B. Disturbed C. --  
 D. -- E. N. D. F. -- G. --.  
 VI. Beads, N. D., 123WP.  
 2 shell ear plugs, N. D., 124WP.  
 VII. B. 13 C. 2417.  
 VIII. 14 inches below the surface.  
 IX. Fragments of skull recovered.  
 X. "Buried at knees of skeleton 2417. Disturbed  
 skeleton decayed."

- I. WP2450 (figure VI-6, VI-7). II. 360L130.  
 III. Adult. IV. N. D.  
 V. A. Multiple, with 2451 B. Partially articulated  
 C. Extended D. On back E. N. D. F. --  
 G. E-W.

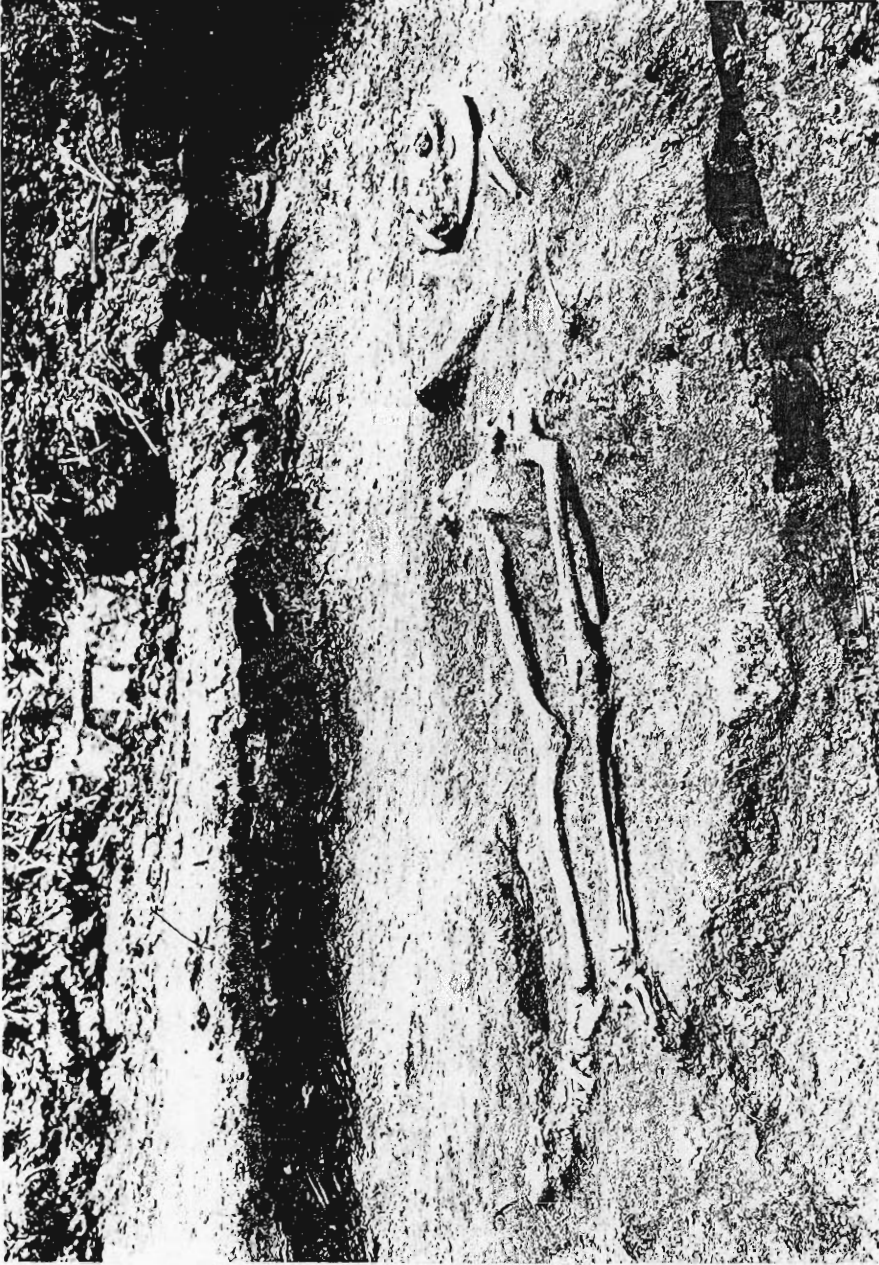


Figure VI-6. Burial 2450.





Figure VI-7. Detail of burial 2450.

## WP2450 Continued

- VI. Circular stone disc (scalloped edges incised circles) under skull, 125WP.  
 4 beads, at left wrist, 126WP.  
 9 beads, at right wrist, 127WP.  
 2 copper ear plugs, one at each side of skull on disc, 128WP.  
 2 beads, around neck, 130WP.  
 Galena, on disc, 129WP.  
 White lead paint, on disc, 125WP.  
 Green paint, N. D., 131WP.
- VII. B. >20 C. 2451.
- VIII. 16 inches below the surface.
- IX. Long bones and fragmentary skull recovered.
- I. WP2451. II. 360L120. III. Infant. IV. N. D.
- V. A. Multiple, with 2450 B. N. D. C. Extended  
 D. On back E. N. D. F. -- G. NE-SW.
- VI. 25 beads, around feet, 132WP.  
 4 beads, around left arm, 133WP.  
 8 beads, around right arm, 134WP.
- VII. B. >20 C. 2450.
- VIII. 14 inches below the surface.
- IX. N. D.
- X. "Buried at feet of skeleton 2450. Bone almost entirely decayed."
- I. WP2452. II. N. D. III. Adult. IV. N. D.
- V. A. N. D. B. Skull only C. -- D. --

## WP2452 Continued

E. N. D. F. -- G. --.

VI. None.

VII. N. D.

VIII. 12 inches below the surface.

IX. Fragments of skull recovered.

I. WP2452. II. N. D. III. Adult. IV. N. D.

V. A. N. D. B. N. D. C. Extended D. On back

E. N. D. F. -- G. N. D.

VI. None.

VII. N. D.

VIII. 14 inches below the surface.

IX. Fragmentary skull and lower legs recovered.

I. WP2454. II. N. D. III. Adult. IV. N. D.

V. A. N. D. B. N. D. C. Extended D. On back

E. N. D. F. -- G. N. D.

VI. None.

VII. N. D.

VIII. 15 inches below the surface.

IX. Long bones recovered.

I. WP2455. II. N. D. III. Child. No other data.

I. WP2456. II. N. D. III. Adolescent. IV. N. D.

V. A. N. D. B. Bundle burial C. -- D. --

E. N. D. F. -- G. --.

VI. None.

VII. N. D.

VIII. 18 inches below the surface.

IX. Fragments of skeleton recovered.

X. "Bones were in a conglomerate heap."

I. WP2457. II. N. D. III. Adult. IV. N. D.

V. A. N. D. B. N. D. C. Extended D. On back

E. N. D. F. -- G. N. D.

VI. None.

VII. N. D.

VIII. 14 inches below the surface.

IX. Fragmentary skull and long bones all that were found and all recovered.

I. WP2458. II. N. D. III. Child. No other data.

I. WP2459. II. N. D. III. Child. IV. N. D.  
V. A. N. D. B. N. D. C. Extended D. On back  
E. N. D. F. -- G. N. D.  
VI. None.  
VII. N. D.  
VIII. 12 inches below the surface.  
IX. Long bones recovered.

I. WP2460. II. N. D. III. Adult. IV. N. D.  
V. A. N. D. B. Disturbed. No other data.

I. WP2461. II. 260L10. III. Adult. IV. N. D.  
V. A. Single B. N. D. C. Extended D. On back  
E. N. D. F. -- G. E-W.  
VI. None.  
VII. B. >20 C. N. D.  
VIII. 12 inches below the surface.  
IX. Long bones recovered.

I. WP2462. II. N. D. III. Adult. IV. N. D.  
V. A. N. D. B. N. D. C. Extended D. On back

## WP2462 Continued

E. N. D. F. -- G. N. D.

VI. None.

VII. N. D.

VIII. 20 inches below the surface.

IX. "Bones in good condition." Most of the skeleton recovered.

I. WP2463. II. N. D. III. Adult. IV. N. D.

V. A. N. D. B. N. D. C. Extended D. On back

E. N. D. F. -- G. N. D.

VI. None.

VII. N. D.

VIII. 18 inches below the surface.

IX. "Bones in good condition." Most of skeleton recovered.

I. WP2464. II. N. D. III. Adult. IV. N. D.

V. A. N. D. B. Disturbed. No other data.

I. WP2465. II. N. D. III. Adult. IV. N. D.

V. A. N. D. B. N. D. C. Extended D. On back

E. N. D. F. -- G. N. D.

## WP2465 Continued

- VI. None.
- VII. N. D.
- VIII. 15 inches below the surface.
- IX. Fragmentary skull and long bones recovered.

I. WP2466. II. N. D. III. Adult. IV. N. D.

V. A. N. D. B. Disturbed C. -- D. --

E. N. D. F. -- G. N. D.

VI. Deer antler, near foot, 138WP.

VII. N. D.

VIII. 15 inches below the surface.

IX. Only foot and ankle found; they were recovered.

I. WP2467. II. N. D. III. Adult. IV. N. D.

V. A. Single B. N. D. C. Extended D. On back

E. In pit F. N. D. G. N. D.

VI. None.

VII. N. D.

VIII. 24 inches below the surface.

IX. No bones recovered.

X. "Pit into subsoil, but very little admixture of topsoil - Difficult to see pit."

I. WP2468. II. N. D. III. Adult. IV. N. D.  
 V. A. N. D. B. Disturbed. No other data.

I. WP2469. II. 260L30. III. Adult. IV. N. D.  
 V. A. N. D., may be multiple with 2477, 2479, 2491  
 B. Articulated C. Extended D. On back E. In  
 pit F. N. D. G. E-W.  
 VI. Plain pot, in back of skull, 219WP.  
 VII. B. 14 C. 2477.  
 VIII. 18 inches below the surface.  
 IX. N. D.

I. WP2470. II. 350L40. III. Infant. No other data.

I. WP2471. II. N. D. III. Adult. IV. N. D.  
 V. A. N. D. B. N. D. C. Fully flexed D. On left  
 side E. N. D. F. -- G. N. D.  
 VI. Pot ("etched rim"), N. D., 220WP.  
 Pot (plain), N. D., 221WP.  
 VII. N. D.  
 VIII. 20 inches below the surface.  
 IX. Long bones recovered.



- I. WP2472. II. 270L30. III. Child. IV. N. D.  
 V. A. Single B. Disturbed C. -- D. --  
 E. N. D. F. -- G. N. D.  
 VI. None.  
 VII. B. 7 C. 2478.  
 VIII. 16 inches below the surface.  
 IX. A few bones and bone fragments recovered.  
 X. "Disturbed by other burials."

- I. WP2473. II. N. D. III. Child. IV. N. D.  
 V. A. N. D. B. Disturbed C. -- D. --  
 E. N. D. F. -- G. N. D.  
 VI. None.  
 VII. N. D.  
 VIII. 12 inches below the surface.  
 IX. A few bone fragments recovered.  
 X. "Disturbed by other burials."

- I. WP2474. II. 80L10. III. Adult. IV. N. D.  
 V. A. Single B. Skull only C. -- D. --  
 E. N. D. F. -- G. --.  
 VI. None.  
 VII. B. >20 C. N. D.

## WP2474 Continued

VIII. 20 inches below the surface.

IX. Skull recovered.

X. "Skull all that was found. The rest of the body apparently was removed by other burials." What other burials? There are no other burials within 20 feet on the field drawings: see figure VI-1. This was the burial of a single skull.

I. WP2475. II. N. D. III. Adult. IV. N. D.

V. A. N. D. B. Disturbed C. Extended D. On back  
E. N. D. F. -- G. N. D.

VI. None.

VII. N. D.

VIII. 10 inches below the surface.

IX. A few bone fragments recovered.

X. "Plow had destroyed some of the bones."

I. WP2476. II. N. D. III. Child. IV. N. D.

V. A. N. D. B. Skull only C. -- D. --  
E. N. D. F. -- G. --.

VI. Pottery discoidal, N. D., 222WP.  
Small pot (plain), N. D., 223WP.  
"Whetstone", N. D., 224WP.

VII. N. D.

VIII. 8 inches below the surface.

## WP2476 Continued

- IX. Fragmentary skull recovered.
- X. "Rest of body is missing."
- I. WP2477. II. 260L30. III. Adult. IV. N. D.
- V. A. N. D., may be multiple with 2469, 2479, 2491  
 B. Articulated C. Extended D. On back E. In  
 pit F. Field drawing unreliable G. (SSW-NNE).
- VI. "Spoon", above right shoulder, 225WP.
- VII. B. >20 C. 2469.
- VIII. N. D.
- IX. Entire skeleton recovered.
- I. WP2478. II. 270L30. III. Adult. IV. N. D.
- V. A. Single B. Disturbed C. -- D. --  
 E. N. D. F. -- G. N. D.
- VI. None.
- VII. B. 8 C. 2472.
- VIII. 47 inches below the surface.
- IX. Leg bones and feet all that were found and  
 recovered.

- I. WP2479. II. 250L20. III. Child. IV. N. D.  
 V. A. Multiple (see X below) B. Bundle burial  
 C. -- D. -- E. In pit F. N. D. G. --.  
 VI. None.  
 VII. B. >20 C. N. D.  
 VIII. 48 inches below the surface.  
 IX. Fragments of bone recovered.  
 X. "This child buried in bundle just at the head of skeleton." The skeleton referred to was probably 2477.

- I. WP2480. II. N. D. III. Adult. IV. N. D.  
 V. A. N. D. B. Disturbed C. -- D. --  
 E. N. D. F. -- G. N. D.  
 VI. None.  
 VII. N. D.  
 VIII. 24 inches below the surface.  
 IX. A few bone fragments recovered.  
 X. "Disturbed by group of burials."

- I. WP2481. II. N. D. III. Adult. IV. N. D.  
 See 2480 above.

I. WP2482. II. 340R20. III. Adult. IV. N. D.  
 V. A. Single B. N. D. C. Extended D. On back  
 E. N. D. F. -- G. S-N.  
 VI. None.  
 VII. B. 15 C. 2427.  
 VIII. 28 inches below the surface.  
 IX. Most of skeleton recovered.

I. WP2483. II. 340R10. III. Adult. IV. N. D.  
 V. A. Single B. N. D. C. Extended D. On back  
 E. N. D. F. -- G. W-E.  
 VI. None.  
 VII. B. 15 C. 2485.  
 VIII. 45 inches below the surface.  
 IX. Long bones recovered.  
 X. "Skull missing."

I. WP2484. II. 340R10. III. Child (10-12).  
 IV. N. D.  
 V. A. Single B. N. D. C. Extended D. On back  
 E. N. D. F. -- G. N. D.  
 VI. None.

WP2484 Continued

VII. B. 12 C. 2482.

VIII. 45 inches below the surface.

IX. A very few bone fragments recovered.

I. WP2485. II. 340R10. III. Adult. IV. N. D.

V. A. Single B. N. D. C. Extended D. On back

E. N. D. F. -- G. SSW-NNE.

VI. None.

VII. B. 18 C. 2483.

VIII. 50 inches below the surface.

IX. Most of skeleton recovered.

I. WP2486. II. 170-0. III. Adult. IV. N. D.

V. A. Single B. Bundle C. -- D. --

E. N. D. F. -- G. --.

VI. None.

VII. B. >20 C. 2493.

VIII. 8 inches below the surface.

IX. Long bones and skull recovered.

I. WP2487. II. N. D. III. N. D. IV. N. D.  
 V. A. Single B. Bundle burial C. -- D. --  
 E. N. D. F. -- G. --.  
 VI. None.  
 No other data.

I. WP2488. II. 170-0. III. Adult. IV. N. D.  
 V. A. Single B. N. D. C. Fully flexed D. On  
 right side E. N. D. F. -- G. N. D.  
 VI. None.  
 VII. B. >20 C. 2492.  
 VIII. 20 inches below the surface.  
 IX. About two-thirds of skeleton recovered.

I. WP2489. II. N. D. III. Infant. IV. N. D.  
 V. A. N. D. B. N. D. C. Extended D. On back.  
 E. N. D. F. N. D. G. N. D.  
 VI. None.  
 No other data.

- I. WP2490. II. N. D. III. Child. IV. N. D.  
 V. A. N. D. B. Disturbed C. -- D. --  
 E. N. D. F. -- G. N. D.  
 VI. None.  
 VII. N. D.  
 VIII. 13 inches below the surface.  
 IX. A few bone fragments recovered.  
 X. "Burial disturbed by later burials."

- I. WP2491. II. 250L30. III. Child (8-9).  
 IV. N. D.  
 V. A. N. D., may be multiple with 2469, 2477, 2479  
 B. N. D. C. Extended D. N. D. E. N. D.  
 F. -- G. N. D.  
 VI. None.  
 VII. B. >20 C. N. D.  
 VIII. 36 inches below the surface.  
 IX. Fragments of bone recovered.

- I. WP2492. II. 170-0. III. Adult. IV. N. D.  
 V. A. Single B. Bundle C. -- D. --  
 E. N. D. F. -- G. --.



## WP2492 Continued

- VI. None.
- VII. B. >20 C. 2493.
- VIII. 6 inches below the surface.
- IX. Long bones recovered.

- I. WP2493. II. 170-0. III. Child. IV. N. D.
- V. A. Single B. Disturbed C. Extended D. On  
back E. N. D. F. -- G. N. D.

- VI. None.
- VII. B. >20 C. 2492.
- VIII. 8 inches below the surface.
- IX. Fragments of bone recovered.

- I. WP2494. II. N. D. III. N. D. IV. N. D.
- V. A. N. D. B. Articulated C. Partially flexed  
D. On left side.  
No other data.

- I. WP2495. II. N. D. III. Child. IV. N. D.
- V. A. N. D. B. Bundle C. -- D. -- E. N. D.

## WP2495 Continued

F. -- G. --.

VI. None.

VII. N. D.

VIII. 20 inches below the surface.

IX. Almost entire skeleton recovered.

I. WP2496. II. N. D. III. Child. IV. N. D.

V. A. N. D. B. N. D. C. Extended D. On back

E. N. D. F. -- G. N. D.

VI. Pot (plain), N. D., 227WP.

Pot (plain), N. D., 228WP.

Small bowl, N. D., 229WP.

Small water bottle (crushed), N. D., 230WP.

VII. N. D.

VIII. N. D.

IX. No bones recovered.

I. WP2497. II. N. D. III. Adult. IV. N. D.

V. A. N. D. B. Disturbed C. -- D. --

E. N. D. F. -- G. N. D.

VI. None.

VII. N. D.

VIII. 36 inches below the surface.

## WP2497 Continued

IX. A few bone fragments recovered.

X. "This burial was found in a garbage pit."

I. WP2498. II. N. D. III. Adult. IV. N. D.

V. A. N. D. B. N. D. C. Extended D. On back

E. N. D. F. -- G. N. D.

VI. Small "toy" pot, under chin, 231WP.

VII. N. D.

VIII. 16 inches below the surface.

IX. A fragmentary skull recovered.

I. WP2499. II. N. D. III. Adult. IV. N. D.

V. A. N. D. B. N. D. C. Partially flexed D. On

back E. N. D. F. -- G. N. D.

VI. None.

VII. N. D.

VIII. 8 inches below the surface.

IX. Almost entire skeleton recovered.

X. "On back with knees doubled under chin."

- I. WP2515. II. N. D. III. Adult. IV. N. D.  
 V. A. N. D. B. N. D. C. N. D. D. On left side  
 E. N. D. F. -- G. N. D.  
 VI. None.  
 VII. N. D.  
 VIII. 40 inches below the surface.  
 IX. A majority of the skeleton recovered.

- I. WP2516. II. N. D. III. Adult. IV. N. D.  
 V. A. N. D. B. Disturbed C. -- D. --  
 E. N. D. F. -- G. N. D.  
 VI. None.  
 VII. N. D.  
 VIII. 20 inches below the surface.  
 IX. A few bones recovered.  
 X. "Disturbed by other burials."

- I. WP2517. II. N. D. III. Adult. IV. N. D.  
 V. A. Single B. N. D. C. Extended D. On back  
 E. N. D. F. -- G. E-W.  
 VI. Water bottle, rear of skull, N. D.  
 VII. N. D.

## WP2517 Continued

VIII. 8 inches below the surface.

IX. No bones recovered.

I. WP2518. II. N. D. III. Adult. IV. N. D.

V. A. N. D. B. N. D. C. Extended D. On back

E. N. D. F. -- G. N. D.

VI. None.

VII. N. D.

VIII. 20 inches below the surface.

IX. Fragmentary skull, tibia, and fibula recovered.

I. WP2519. II. N. D. III. Adult. No other data.

I. WP2520. II. 210-0. III. Child (12). IV. N. D.

V. A. Single B. N. D. C. Extended D. On back

E. N. D. F. -- G. ENE-WSW.

VI. None.

VII. B. >20 C. 2301.

VIII. 18 inches below the surface.

IX. Teeth and bone fragments recovered.

I. WP2521. II. 290R40. III. Adult. IV. N. D.  
 V. A. Single B. N. D. C. Extended D. On back  
 E. In pit F. N. D. G. SSW-NNE.  
 VI. None.  
 VII. B. >20 C. N. D.  
 VIII. 6 inches below the surface.  
 IX. No bones recovered.

I. WP2522. II. 290-0. III. Adult. IV. N. D.  
 V. A. Single B. Disturbed C. -- D. --  
 E. In pit F. N. D. G. N. D.  
 VI. None.  
 VII. B. 19 C. 2568.  
 VIII. 14 inches below the surface.  
 IX. No bones recovered.

I. WP2523. II. 110-0. III. Adult. IV. N. D.  
 V. A. Single B. Disturbed C. -- D. --  
 E. N. D. F. -- G. --.  
 VI. None.  
 VII. B. >20 C. 2304.  
 VIII. 6 inches below the surface.

## WP2523 Continued

- IX. Teeth and bone fragments recovered.
- X. "Plow had destroyed most of skull. Bones in poor condition."

I. WP2524. II. 340L30. III. Adult. IV. N. D.

V. A. Single B. Disturbed C. -- D. --  
E. N. D. F. -- G. --.

VI. None.

VII. B. 16 C. 2426.

VIII. 8 inches below the surface.

IX. A few bone fragments recovered.

I. WP2525. II. 110-0. III. Adult. IV. N. D.

V. A. Single B. Disturbed C. -- D. --  
E. N. D. F. -- G. --.

VI. None.

VII. B. >20 C. 2304.

VIII. 8 inches below the surface.

IX. A few bone fragments recovered.

X. "Disturbed by plow."

I. WP2526. II. 100R5. III. Adult. IV. N. D.  
V. A. Single B. N. D. C. Extended D. On back  
E. N. D. F. -- G. WSW-ENE.  
VI. None.  
VII. B. >20 C. 2304.  
VIII. 10 inches below the surface.  
IX. No bones recovered.

I. WP2527: Number may not have been used.

I. WP2528. II. In south pit. III. Adult. IV. N. D.  
V. A. Single B. Disturbed C. Extended D. On  
back E. In pit F. N. D. G. SSW-NNE.  
VI. None.  
VII. B. >20 C. 2529.  
VIII. 16 inches below the surface.  
IX. Still in pit.

I. WP2529. II. In south pit. III. Adult. IV. Male.  
V. A. Single B. Articulated C. Extended D. On  
back E. In pit F. N. D. G. NNE-SSW.



## WP2529 Continued

- VI. None.
- VII. B. >20 C. 2528.
- VIII. 12 inches below the surface.
- IX. Still in pit.
- X. Legs crossed at ankles.
- 
- I. WP2530. II. In south pit. III. Adult. IV. N.D.
- V. A. Single B. Bundle C. -- D. -- E. N. D.  
F. -- G. --.
- VI. Water bottle, right side of skull, 149WP.
- VII. B. >20 C. 2531.
- VIII. 4 inches below the surface.
- IX. Still in pit.
- 
- I. WP2531. II. In south pit. III. Adult. IV. N. D.
- V. A. Single B. Bundle burial C. -- D. --  
E. N. D. F. -- G. --.
- VI. Beads, right side of skull, 150WP.  
Fragments of copper ear plug, right side of skull,  
151WP.
- VII. B. >20 C. 2530.
- VIII. 6 inches below the surface.
- IX. Still in pit.

I. WP2532. II. In south pit. III. N. D. IV. N. D.

V. A. Single B. Skull only C. -- D. --

E. N. D. F. -- G. --.

VI. water bottle, behind skull, 152WP.  
 Paint bowl, right rear of skull, 153WP.  
 Disc, right side of skull, 154WP.  
 water bottle, left side of skull, 155WP.  
 Fragment of pot, left rear of skull, 156WP.  
 Yellow paint, in 153WP, 153WP.  
 Fragment of paint, to left of 155WP, 157WP.

VII. B. >20 C. 2553.

VIII. 17 inches below the surface.

IX. still in pit.

I. WP2533. II. In south pit. III. Adult. IV. N. D.

V. A. Single (?) B. N. D. C. N. D. D. N. D.

E. N. D. F. N. D. G. N. D.

VI. None.

VII. B. >20 C. 2554.

VIII. 15 inches below the surface.

IX. still in pit.

X. "Skull and part of right arm all that was found."

- I. WP2534. II. In south pit. III. Adult. IV. N. D.  
 V. A. Single (?) B. Disturbed C. -- D. --  
 E. N. D. F. -- G. N. D.  
 VI. None.  
 VII. B. >20 C. 2583.  
 VIII. 15 inches below the surface.  
 IX. still in pit.  
 X. "Mandible turned over in skull."

- I. WP2535. II. In south pit. III. Adult. IV. Male.  
 V. A. Single B. N. D. C. Extended D. On back  
 E. N. D. F. -- G. NNE-SSW.  
 VI. None.  
 VII. B. >20 C. 2534.  
 VIII. 5 inches below the surface.  
 IX. Still in pit.

- I. WP2536. II. In south pit. III. Adult. IV. Male.  
 V. A. Multiple, with 2537 B. bundle C. -- D. --  
 E. N. D. F. -- G. --.  
 VI. None.  
 VII. B. >20 C. 2537.

## WP2536 Continued

VIII. 5 inches below the surface.

IX. Still in pit.

I. WP2537. II. In south pit. III. Child. IV. N. D.

V. A. Multiple, with 2536 B. Bundle C. -- D. --

E. N. D. F. -- G. --.

VI. None.

VII. B. >20 C. 2536.

VIII. 5 inches below the surface.

IX. Still in pit.

I. WP2538. II. In south pit. III. Adult. IV. N. D.

V. A. Single B. Disturbed C. Extended D. On back

E. N. D. F. -- G. N-S.

VI. water bottle (plain), by right wrist, 158WP.

VII. B. 20 C. 2556.

VIII. 8 inches below the surface.

IX. Still in pit.

X. "Skull and legs plowed away..."

I. WP2539. II. In south pit. III. Infant. IV. N.D.  
 V. A. Single B. Articulated C. Extended D. On  
 back E. N. D. F. -- G. E-W.  
 VI. None.  
 VII. B. 19 C. 2554.  
 VIII. 10 inches below the surface.  
 IX. Still in pit.  
 X. "Knees flexed [slightly] to right."

I. WP2540. II. In south pit. III. Adult. IV. N. D.  
 V. A. Single B. Disturbed C. Extended D. On back  
 E. N. D. F. -- G. S-N.  
 VI. Water bottle, by right foot, 159WP.  
 VII. B. >20 C. 2544.  
 VIII. 5 inches below the surface.  
 IX. Still in pit.  
 X. "Only legs and fragment of pelvis found."

I. WP2541. II. In south pit. III. Adult. IV. N. D.  
 V. A. Multiple, with 2542 B. Bundle C. -- D. --  
 E. N. D. F. -- G. --.  
 VI. None.  
 VII. B. >20 C. 2542.

## WP2541 Continued

VIII. 5 inches below the surface.

IX. Still in pit.

X. "Buried with...other bundles."

I. WP2542. II. In south pit. III. Adult. IV. Male.

V. A. Multiple, with 2541 B. Bundle C. -- D. --

E. N. D. F. -- G. --.

VI. None.

VII. B. >20 C. 2541.

VIII. 5 inches below the surface.

IX. Still in pit.

I. WP2543. II. In south pit. III. Adult. IV. N. D.

V. A. Single B. N. D. C. N. D. D. N. D.

E. N. D. F. -- G. N. D.

VI. None.

VII. B. >20 C. 2541.

VIII. 16 inches below the surface.

IX. Still in pit.

- I. WP2544. II. In south pit. III. Adult. IV. N. D.  
 V. A. Single B. Articulated C. Extended D. On  
 back E. N. D. F. -- G. E-W.  
 VI. Owl effigy, left rear of skull, 160WP.  
 Water bottle (top plowed away), left side of skull,  
 161WP.  
 Shell beads, right arm, 162WP.  
 Snell beads, right ankle, 163WP.  
 Shell beads, left ankle, 164WP.  
 VII. B. 18 C. 2540.  
 VIII. 5 inches below the surface.  
 IX. Still in pit.  
 X. "Plow had damaged skeleton."

- I. WP2545. II. In south pit. III. Adult. IV. N. D.  
 V. A. Single B. Disturbed C. -- D. --  
 E. N. D. F. -- G. N. D.  
 VI. Effigy bowl (head broken off), N. D., 165WP.  
 VII. B. >20 C. 2544.  
 VIII. 6 inches below the surface.  
 IX. Still in pit.  
 X. "Aboriginal disturbance. Part of left fibula and  
 tibia found".

I. WP2546. II. In south pit. III. Adult.

IV. Female.

V. A. Multiple, with 2647 B. Articulated

C. Extended D. On back E. N. D. F. --

G. N-S.

VI. None.

VII. B. >20 C. 2547.

VIII. 14 inches below the surface.

IX. Still in pit.

I. WP2547. II. In south pit. III. Adult. IV. Male.

V. A. Multiple, with 2546 B. Articulated

C. Partially flexed D. On back E. N. D. F. --

G. NNW-(SSE).

VI. None.

VII. B. >20 C. 2546.

VIII. 14 inches below the surface.

IX. Still in pit.

I. WP2548. II. In south pit. III. Adult.

IV. Female.

V. A. Single B. Articulated C. Partially flexed



## WP2548 Continued

- D. On left side E. N. D. F. -- G. N-S.
- VI. None.
- VII. B. >20 C. 2544.
- VIII. 16 inches below the surface.
- IX. Still in pit.
- 
- I. WP2549 (figure VI-8). II. In south pit.
- III. Adult. IV. Male.
- V. A. Single B. Articulated C. Extended D. On back E. N. D. F. -- G. E-W.
- VI. Copper ear plug, right of skull, 166WP.  
Copper axe, under right elbow, 167WP.  
Copper "dagger", by left hand, 168WP.  
Pendant (cross) on upper chest, 169WP.
- VII. B. 14 C. 2550.
- VIII. 36 inches below the surface.
- IX. Still in pit.
- 
- I. WP2550. II. In south burial pit. III. Adult.
- IV. N. D.
- V. A. Multiple, with 2551 B. N. D. C. Extended  
D. On back E. N. D. F. -- G. SSW-ENE.



Figure VI-8. Burial 2549.

## WP2550 Continued

- VI. Water bottle, rear of skull, 171WP.  
 2 pottery fragments, rear of skull, 170WP, 173WP.  
 Copper ear plugs, left side of skull, 172WP.  
 Stone pipe, at right elbow, 174WP.  
 6 large shell beads, at right wrist, 175WP.  
 9 large shell beads, on pelvis, 176WP.  
 5 large shell beads, at left wrist, 177WP.  
 8 large shell beads, at left ankle, 179WP.  
 Shell "object", at left ankle, 180WP.  
 4 large shell beads, at left foot, 181WP.  
 Stone tool, at left of skull, 178WP.
- VII. B. 16 C. 2551.
- VIII. N. D.
- IX. Still in pit.
- X. Burial 2551 is a skull on the chest of 2550.
- I. WP2551. II. In south pit. III. Adult. IV. N. D.
- V. A. Multiple, with 2550 B. Skull only C. --  
 D. -- E. N. D. F. -- G. --.
- VI. None.
- VII. B. 16 C. 2550.
- VIII. N. D.
- IX. Still in pit.
- I. WP2552. II. In south pit. III. N. D. IV. N. D.
- V. A. Multiple, with 2553 B. Bundle (?) C. --

## WP2552 Continued

- D. -- E. N. D. F. -- G. --.
- VI. Fragment of stone disc, under left elbow, 182WP.  
 Pearl beads, at left wrist, 183WP.  
 Clay pipe, under left elbow, 184WP.
- VII. B. 14 C. 2553.
- VIII. 30 inches below the surface.
- IX. Still in pit.
- X. Buried in matting with 2553.
- I. WP2553. II. In south pit. III. Adult. IV. N. D.
- V. A. Multiple, with 2552 B. N. D. C. Extended  
 D. On back E. N. D. F. -- G. NNE-SSW.
- VI. Water bottle, back of skull, 186WP.  
 Crushed bowl, left rear of skull, 187WP.  
 7 copper pendants, right of skull, 188WP.  
 Small rough stone disc, right of skull, 190WP.  
 Copper ear plug, right shoulder, 191WP.  
 Copper ear plug, left side of skull, 192WP.  
 Copper ear plug, left side of skull, 193WP.  
 Bone fish hook, at right snoulder, 195WP.  
 Copper fish hook, at right shoulder, 196WP.  
 6 beads, at chin, 197WP.  
 2 shell discs, at right elbow, 198WP.  
 Pipe, at right elbow, 199WP.  
 "Numerous" shell beads, near right leg, 200WP.  
 "Numerous" shell beads, near right leg, 201WP.  
 "Numerous" shell beads, near left leg, 202WP.  
 "Numerous" shell beads, near left leg, 203WP.  
 Mass of green sand, in back of skull, 185WP.  
 Mass of "plastic" green paint, right of skull, 189WP.  
 Bear tooth, at right shoulder, 194WP.
- VII. B. 14 C. 2552.

## WP2553 Continued

- VIII. 30 inches below the surface.
- IX. Still in pit.
- X. Buried in matting with 2552, at feet of and beneath 2550.
- I. WP2554. II. In south pit. III. Adult. IV. N. D.
- V. A. Single B. N. D. C. Extended D. On back  
E. N. D. F. -- G. SSW-NNE.
- VI. Stone disc (notched edges), under left ankle, 204WP.  
Galena, under left elbow, 205WP.
- VII. B. 16 C. 2550.
- VIII. 22 inches below the surface.
- IX. Still in pit.
- I. WP2555. II. In south pit. III. Adult. IV. N. D.
- V. A. Multiple, with 2556 B. N. D. C. Extended  
D. On back E. N. D. F. -- G. N-S.
- VI. Stone disc (2 engraved rings) under skull, 206WP.  
Pot, at left knee, 207WP.  
Paint, on 206WP, 206WP.
- VII. B. 17 C. 2556.
- VIII. 16 inches below the surface.
- IX. Still in pit.

I. WP2556. II. In south pit. III. Adult. IV. N. D.

V. A. Multiple, with 2555 B. N. D. C. Extended

D. On back E. N. D. F. -- G. N-S.

VI. None.

VII. B. 17 C. 2555.

VIII. 16 inches below the surface.

IX. Still in pit.

I. WP2557. II. In south pit. III. Adult. IV. N. D.

V. A. Single (may be multiple with 2555, 2556)

B. Bundle C. -- D. -- E. N. D. F. -- G. --.

VI. None.

VII. B. 18 C. 2556.

VIII. 15 inches below the surface.

IX. "Buried at feet of skeletons 2555 and 2556."

I. WP2558. II. In south pit. III. Child. IV. N. D.

V. A. Single B. N. D. C. Extended D. On back

E. N. D. F. -- G. S-N.

VI. Water bottle (black, engraved hand), left rear of skull, 208WP.

Beads, around neck, 210WP.

Beads, around right arm, 211WP.

Rock, above left shoulder, 209WP.



Figure VI-9. Group of burials west of Mound P.

## WP2558 Continued

VII. B. 16 C. 2553.

VIII. 12 inches below the surface.

IX. Still in pit.

I. WP2559. II. In south pit. III. Adult. IV. N. D.

V. A. Single (may be multiple with 2560, 2561)

B. Skull only C. -- D. -- E. N. D. F. --

G. --.

VI. Effigy bowl (duck) left side of skull, 212WP.  
Pot, left side of skull, 213WP.

VII. B. 18 C. 2561.

VIII. 15 inches below the surface.

IX. Still in pit.

I. WP2560. II. In south pit. III. Child. IV. N. D.

V. A. Single (may be multiple with 2559, 2561)

B. Skull only C. -- D. -- E. N. D. F. --

G. --.

VI. 2 water bottles, right of skull, 214, 215WP.

VII. B. 18 C. 2561.

VIII. 14 inches below the surface.

IX. Still in pit.



I. WP2561. II. In south pit. III. Adult. IV. N. D.  
 V. A. Single (may be multiple with 2559, 2560)  
 B. Skull only C. -- D. -- E. X. D. F. --  
 G. --.

VI. None.

VII. B. 18 C. 2559.

VIII. N. D.

IX. Still in pit.

X. Mandible missing.

I. WP2562. II. In south pit. III. Adult. IV. N. D.

V. A. Multiple, with 2563 B. N. D. C. Extended  
 D. On back E. N. D. F. -- G. E-W.

VI. Water bottle, right rear of skull, 216WP.  
 Conch shell effigy, right rear of skull, 217WP.  
 Fish effigy, right rear of skull, 218WP.

VII. B. 18 C. 2563.

VIII. 16 inches below the surface.

IX. Still in pit.

X. "This skeleton just beneath skeleton 2563."

I. WP2563. II. In south pit. III. Adult. IV. N.D.

V. A. Multiple, with 2562 B. Disturbed C. --

## WP2563 Continued

- D. -- E. N. D. F. -- G. ---.
- VI. Fish head effigy, at feet, 219WP.
- VII. B. 16 C. 2562.
- VIII. 6 inches below the surface.
- IX. Still in pit.
- X. "Only legs left, skull and trunk were destroyed."

I. WP2563a. II. 280L10. No data.

I. WP2564a. II. 280L10. No data.

I. WP2564. II. In south pit. III. Adult. IV. N. D.

V. A. Multiple, with 2565 B. Bundle C. -- D. --

E. N. D. F. -- G. ---.

VI. None.

VII. B. >20 C. 2565.

VIII. 8 inches below the surface.

IX. Still in pit.

- I. WP2565. II. Was in south pit. III. Adult.  
 IV. N. D.  
 V. A. Multiple, with 2564 B. Bundle C. -- D. --  
 E. N. D. F. -- G. --.  
 VI. None.  
 VII. B. >20 C. 2564.  
 VIII. 8 inches below the surface.  
 IX. Almost entire skeleton recovered.  
 X. "Alongside of burial 2564."

- I. WP2567. II. 280-0. III. Adult. IV. N. D.  
 V. A. Single B. N. D. C. Extended D. On back  
 E. N. D. F. -- G. N-S.  
 VI. None.  
 VII. B. 14 C. N. D.  
 VIII. 14 inches below the surface.  
 IX. "Removed to north burial pit in museum."  
 X. "Scar runs around entire crown of head. Maybe disease or maybe scalped."

- I. WP2568. No data.

- I. WP2569a. II. 280-0. No data.
- I. WP2569 (figure VI-10). II. 300-0. III. Adult.
- IV. Male.
- V. A. Multiple, with 2570-2573 B. N. D.  
C. Extended D. On back E. In pit F. 14 feet  
x 12 feet x ? G. E-W.
- VI. Pot (plain, two handles), N. D., 245WP.  
Bone "implement"; N. D., 246WP.  
Pipe fragment (tobacco inside), N. D., 247WP.
- VII. B. 13 C. 2572.
- VIII. 14 inches below the surface.
- IX. N. D.
- I. WP2570. II. 300-0. III. Adult. IV. N. D.
- V. A. Multiple, with 2569, 2571-73 B. N. D.  
C. Extended D. On back E. In pit F. 14 feet  
x 12 feet x ? G. N-S.
- VI. None.
- VII. B. 14 C. 2569.
- VIII. 18 inches below the surface.
- IX. N. D.
- X. "Underneath and perpendicular to SK2569.



Figure VI-10. Burials 2569 - 2573.

- I. WP2571. II. 300-0. III. Adult. IV. N. D.  
 V. A. Multiple, with 2569, 2570, 2572-73 B. N. D.  
 C. Extended D. On back E. In pit F. 14 feet  
 x 12 feet x ? G. E-W.  
 VI. None.  
 VII. B. 13 C. 2570.  
 VIII. N. D.  
 IX. N. D.  
 X. "Parallel to 2569 with feet over chest of 2570."

- I. WP2572. II. 300-0. III. Adolescent. IV. N. D.  
 V. A. Multiple, with 2569-2571, 2573 B. N. D.  
 C. Extended D. On back E. In pit F. 14 feet  
 x 12 feet x ? G. E-W.  
 VI. None.  
 VII. B. 13 C. 2570.  
 VIII. N. D.  
 IX. N. D.  
 X. "Head over knees of 2570."

- I. WP2573. II. 300-0. III. Adolescent. IV. N. D.  
 V. A. Multiple, with 2569-72, 2573 B. N. D.

## WP2573 Continued

- C. Extended D. On back E. In pit F. 14 feet  
x 12 feet x ? G. E-W.
- VI. None.
- VII. B. 13 C. 2571.
- VIII. N. D.
- IX. N. D.
- X. "Parallel to 2571."
- 
- I. WP2574. II. N. D. III. N. D. IV. N. D.
- V. A. N. D. B. Skull only. No other data.
- 
- I. WP2574a. No data
- 
- I. WP2616. II. See X below. III. N. D. IV. N. D.
- V. A. Single B. N. D. C. Extended D. On back  
E. N. D. F. -- G. N. D.
- VI. None.
- VII. N. D.
- VIII. 24 inches below the surface.
- IX. A few bones recovered.
- X. In drainage ditch 36 feet east of museum.

- I. WP2624. II. See X below. III. Child. IV. N. D.  
 V. A. Single B. N. D. C. Extended D. On back  
 E. N. D. F. -- G. N. D.  
 VI. None.  
 VII. N. D.  
 VIII. 8 inches below the surface.  
 IX. N. D.  
 X. 41 feet east of north burial pit; 4 feet north of drainage ditch.

- I. WP2625. II. See X below. III. N. D. IV. N. D.  
 V. A. N. D. B. N. D. C. Partially flexed  
 D. On right side E. N. D. F. -- G. N. D.  
 VI. None.  
 VII. N. D.  
 VIII. 18 inches below the surface.  
 IX. N. D.  
 X. In drainage ditch; 42 feet east of a point on the outside wall of the museum opposite south burial pit.

- I. WP2629. II. See X below. III. N. D. IV. N. D.  
 V. A. Single B. N. D. C. Extended D. On back  
 E. N. D. F. N. D. G. E-W.



## WP2629 Continued

- VI. None.
- VII. N. D.
- VIII. N. D.
- IX. N. D.
- X. 36 feet east of northeast corner of museum.
- 
- I. WP2630. II. See X below. III. N. D. IV. N. D.
- V. A. Single B. N. D. C. Extended D. On back  
E. N. D. F. -- G. W-E.
- VI. None.
- VII. N. D.
- VIII. N. D.
- IX. N. D.
- X. 24 feet east of northeast corner of the museum.
- 
- I. WP2631: Under 2624, no other data.
- 
- I. WP2632. II. At southeast corner of north burial  
pit. No other data.

- I. WP2633. II. N. D. III. Child. IV. N. D.  
 V. A. Single B. N. D. C. Extended D. On back  
 E. N. D. F. -- G. N. D.  
 VI. Bowl (fragments) inverted over skull and extending  
 to pelvis, 254WP.  
 VII. N. D.  
 VIII. N. D.  
 IX. N. D.

- I. WP2634. II. N. D. III. Adult. IV. N. D.  
 V. A. Single B. N. D. C. Extended D. On back  
 E. N. D. F. -- G. N. D.  
 VI. Pottery discoidal, at right foot, 255WP.  
 Stone discoidal, at right ankle, 256WP.  
 Pottery fragment, under skull, 257WP.  
 VII. N. D.  
 VIII. 41 inches below the surface.  
 IX. N. D.

- I. WP2635. II. In drainage ditch. III. Adult.  
 IV. N. D.  
 V. A. N. D. B. N. D. C. Extended D. On back  
 E. N. D. F. -- G. N. D.  
 VI. Broken bowl, at right ankle, 258WP.

## WP2635 Continued

VII. N. D.

VIII. 37 inches below the surface.

IX. N. D.

I. WP2636. II. N. D. III. Adult. IV. N. D.

V. A. N. D. B. N. D. C. Extended D. On back

E. N. D. F. -- G. N. D.

VI. Bowl (incised scroll), to left of skull, 259WP.  
Bowl (plain), to left of skull, 260WP.

VII. N. D.

VIII. 31 inches below the surface.

IX. N. D.

I. WP2637. II. In ditch somewhere. III. Infant.

IV. N. D.

V. A. N. D. B. Disturbed C. N. D. D. -- E. N. D.

F. -- G. N. D.

VI. Pottery discoidal, N. D., 262WP.

VII. N. D.

VIII. 30 inches below the surface.

IX. None.

I. WP2638. II. N. D. III. Adult. No other data.

I. WP2639. II. N. D. III. Adult. No other data.

I. WP2640. II. N. D. III. Adult. IV. N. D.

V. A. Multiple, with 2641 B. N. D. C. Extended

D. On back E. N. D. F. -- G. N. D.

VI. Fragment of pot, over hips, 263WP.  
Pottery discoidal, back of skull, 266WP.

VII. N. D.

VIII. 42 inches below the surface.

IX. Most of skeleton recovered.

X. Pottery fragment 263WP extends over hips of both  
2640 and 2641.

I. WP2641. II. N. D. III. Adult. IV. N. D.

V. A. Multiple, with 2640 B. N. D. C. Extended

D. On back E. N. D. F. -- G. N. D.

VI. Fragment of pot, over hips, 263WP.  
Fragment of pot, under skull, 264WP.

VII. N. D.

VIII. 42 inches below the surface.

IX. Most of skeleton recovered.

I. WP2642. II. N. D. III. Adult. IV. N. D.  
 V. A. N. D. B. Skull only C. -- D. --  
 E. N. D. F. -- G. N. D.  
 VI. Copper fragment, in back of skull, 265WP.  
 VII. N. D.  
 VIII. 42 inches below the surface.  
 IX. N. D.

I. WP2643. II. N. D. III. Adolescent IV. N. D.  
 V. A. N. D. B. N. D. C. Fully flexed D. On  
 left side E. N. D. F. -- G. N. D.  
 VI. None.  
 VII. N. D.  
 VIII. 29 inches below the surface.  
 IX. N. D.

I. WP2644. II. N. D. III. Adult. IV. N. D.  
 V. A. Single B. N. D. C. Partially flexed  
 D. On back E. N. D. F. -- G. N. D.  
 VI. None.  
 VII. N. D.  
 VIII. 28 inches below the surface.

## WP2644 Continued

IX. None.

I. WP2645. II. N. D. III. Adult. IV. N. D.

V. A. Single B. N. D. C. Extended D. On back

E. N. D. F. -- G. N. D.

VI. Pottery fragment, under skull, 267WP.  
Stone pipe ("very fine"), below feet, 268WP.

VII. N. D.

VIII. 29 inches below the surface.

IX. Most of the skeleton recovered.

Excavations West of Mound P'

During February of 1936 an area of approximately 10,000 square feet was excavated west of Mound P. This excavation was designated west of P "prime" (WP') by the Alabama Museum of Natural History. Shortly after the excavation was completed a temporary burial museum was erected over a section of the excavated area. David DeJarnette and Walter B. Jones published a guide to the archaeological features within the temporary museum building (Jones and DeJarnette n. d.). This section recapitulates the data published by Jones and DeJarnette and also describes the archaeological features which were recovered outside the area covered by the museum building.

Figure VI-11 illustrates all the archaeological features recovered in the area west of P' as well as the grid system used by the excavators. This excavation, incidentally, was the first area on the Moundville site for which a grid system was employed. Within the excavated area 35 burials (numbered 2137 to 2171), one complete and several incomplete structural patterns, two firebasins, and a segment of the pallisade wall were recovered and recorded.

The complete structure, which occupied squares 5 through 25, L3 through L9, was of subrectantular form outlined by a series of paired wall trenches. The interior

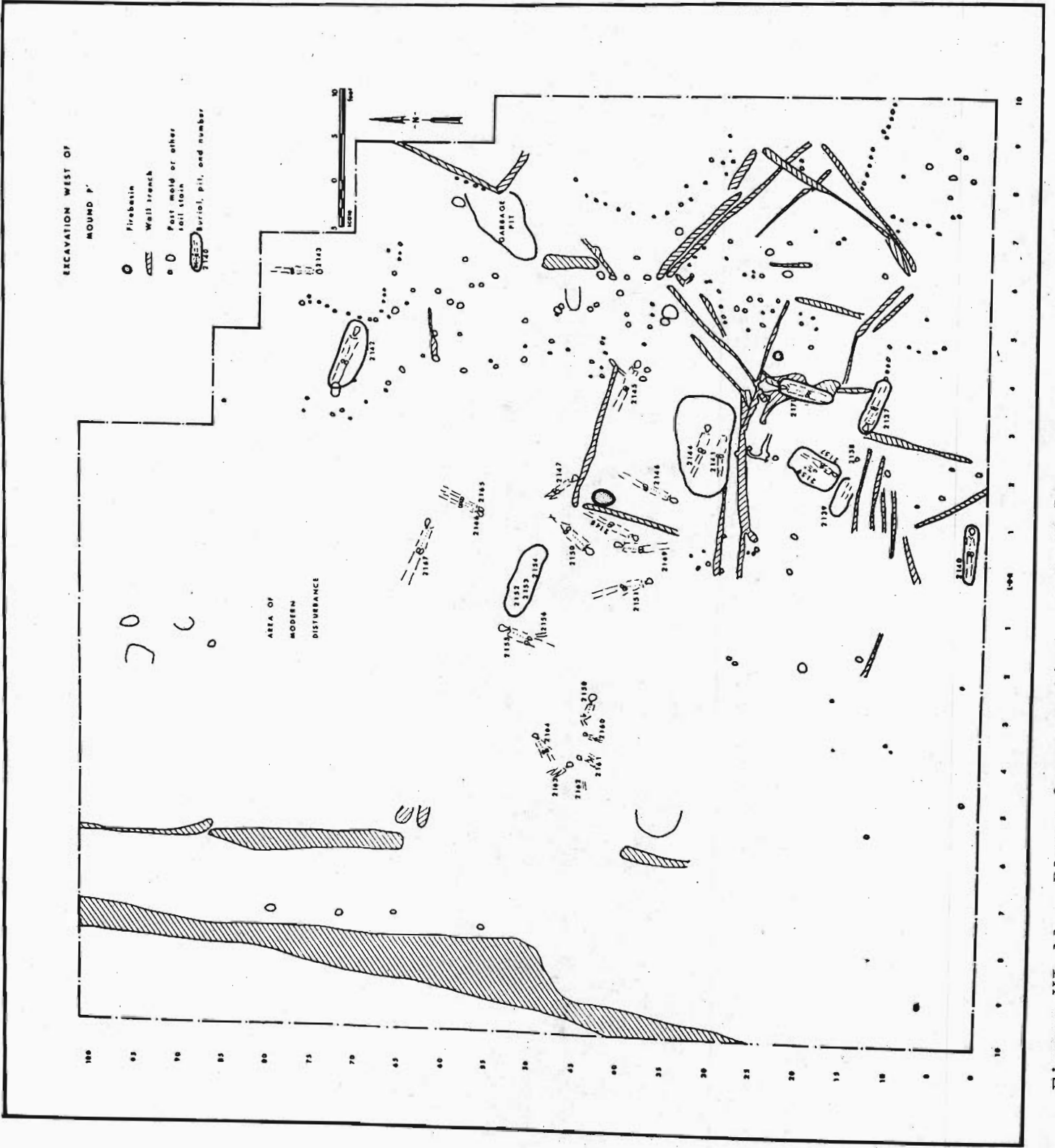


Figure VI-11. Plan of excavation west of P1.



dimensions of this structure were 18 feet (NE-SW) by 20 feet (NW-SE); these dimensions yield an interior floor area of 360 square feet. On all sides of this structure the excavators uncovered numerous other wall trench and post mold patterns. However, none of these partial patterns could be linked to form another coherent structural pattern. The wall trenches to the northwest, west, and southwest of the structure could have been additions or appendages to the central structure or they could have been incompletely recognized independant structures. The post mold pattern to the southeast of the structure may also have been either part of the structure or an incomplete part of another structure. Farther to the north, in squares 50 to 65, R8 to R10, there is the corner of what was an incompletely excavated independant structure.

At the western edge of the excavation a segment of a wide, deeply set wall trench was uncovered. To the east of this large wall a second narrower wall trench was recorded. The large wall, which was probably a segment of the palisade wall surrounding the town, varied in width from three to six feet. The segments of the narrower wall varied in width from one to 25 feet. The depth of neither wall trench was recorded.

The other archaeological features observed in the excavation west of P' included a garbage pit, in squares 50 to 60, R6 to R8, and two firebasins. One of the firebasins, in square 20R4, was associated with the complete structural pattern mentioned above; the other firebasin, in square 40R1, is in the northwest corner of an incomplete structural pattern. The diameter of the first firebasin was 12 inches, the diameter of the second was 24 inches.

In addition to the burials and their accompanying artifacts, seven unassociated artifacts were found and recorded. These artifacts included a piece of sandstone (40WP'), part of a sandstone disc (41WP'), a grooved piece of sandstone (42WP'), a pitted stone (43WP'), a piece of pitted sandstone (44WP'), a fragment of a greenstone axe (45WP'), and a fragment of polished greenstone (46WP').

The burials, which constitute the major class of features here as well as in the other excavations at Moundville will be described next. The format used to order the burial data precedes their description and is the one established for all burial descriptions in this volume.

Excavations West of P'  
 Burials 2137 to 2171  
 Guide to Burial Descriptions

N. D. = No Data; -- = Not Applicable

- I. Site designation and burial number (i. e. WP'2137).
- II. Square number.
- III. Age.
- IV. Sex (If given on C. L. Snow's burial cards).
- V. Form of burial:
  - A. Single or multiple (if multiple numbers of associated burials given).
  - B. Articulated, partially articulated, bundle, disturbed, skull only.
  - C. Extended, partially flexed, fully flexed.
  - D. On back, on right side, on left side, on face.
  - E. In pit, no pit.
  - F. If in pit, the dimensions of the pit.
  - G. Orientation (head-feet). Cardinal directions enclosed in parenthesis (N-S) or N-(S) indicates uncertainty in one or both directions.
- VI. Internal associations and locations, with field specimen numbers: e. g. Pot, right shoulder, 50WP'.
- VII. External Association:
  - A. In structure - not in structure.
  - B. Nearest firebasin in feet.
  - C. Nearest neighbor burial number.

- VIII. Stratigraphic and other associations.  
 IX. Bones recovered; skeletal condition.  
 X. Remarks.

I. WP'2137. II. 10R3. III. Adult. IV. N. D.  
 V. A. Single B. N. D. C. Extended D. On back  
 E. In pit F. 6.0 feet x 1.7 feet x ? G. W-E.

VI. Bowl, inverted over skull, 32WP'.  
 Small fish effigy bowl, inside 34WP', 33WP'.  
 Fish effigy bowl, at left shoulder, 34WP'.  
 Pot (crushed), over left elbow, 35WP'.  
 Pot (crushed), over left hand, 36WP'.  
 Fragment of vessel, at feet, 37WP'.  
 Fragment of vessel, at feet, 38WP'.

VII. A. Not in structure B. 11 C. 2138.

VIII. 10 inches below the surface.

IX. N. D.

I. WP'2138. II. 10R2. III. Infant. IV. N. D.

V. A. Single B. Skull only C. -- D. --  
 E. N. D. F. -- G. --.

VI. None.

VII. A. Not in structure B. 13 C. 2137.

VIII. 3 inches below the surface.

IX. N. D.

I. WP'2139. II. 15R2. III. Adult. IV. N. D.  
 V. A. Single B. N. D. C. Extended D. On back  
 E. In pit F. N. D. G. WNW-ESE.  
 VI. None.  
 VII. A. Not in structure B. 17 C. 2157.  
 VIII. N. D.  
 IX. N. D.

I. WP'2140. II. 0-0. III. Adult. IV. N. D.  
 V. A. Single B. N. D. C. Extended D. On back  
 E. In pit F. 6.3 feet x 1.5 feet x ? G. E-W.  
 VI. None.  
 VII. A. Not in structure B. >20 C. 2139.  
 VIII. N. D.  
 IX. N. D.

I. WP'2141. II. 25R2. III. Adult. IV. N. D.  
 V. A. Single B. N. D. C. Extended D. On back  
 E. In pit F. 5.5 feet x 1.3 feet x ? G. (E)-W.  
 VI. None.  
 VII. A. In structure B. 2 C. 2144.  
 VIII. 6 inches below the surface.

## WP'2141 Continued

IX. N. D.

X. Headless skeleton.

I. WP'2142. II. 70R5. III. Adult. IV. N. D.

V. A. Single B. N. D. C. Extended D. On back

E. In pit F. 7.5 feet x 2.3 feet x ? G. E-W.

VI. None.

VII. A. Not in structure B. &gt;20 C. 2143.

VIII. N. D.

IX. N. D.

I. WP'2143. II. 70R6. III. Adult. IV. N. D.

V. A. Single B. N. D. C. Extended D. On back

E. N. D. F. -- G. S-N.

VI. None.

VII. A. Not in structure B. &gt;20 C. 2142.

VIII. 3 inches below the surface.

IX. N. D.

I. WP'2144. II. 30R2. III. Adult. IV. N. D.

V. A. Single B. N. D. C. Extended D. On back

## WP'2144 Continued

E. N. D. F. -- G. ESE-WNW.

VI. Pebble hammer, on left shoulder, 1 WP'.

VII. A. In structure B. 12 C. 2141.

VIII. 8 inches below the surface.

IX. N. D.

I. WP'2145. II. 35R3. III. Adult. IV. N. D.

V. A. Single B. N. D. C. Extended D. On back

E. N. D. F. -- G. SE-NW.

VI. None.

VII. A. In structure B. 9 C. 2144.

VIII. 20 inches below the surface.

IX. N. D.

X. "Extended on back with hands over pelvis."

I. WP'2146. II. 35R1. III. Adult. IV. N. D.

V. A. Single B. N. D. C. Extended D. On back

E. N. D. F. -- G. SSW-NNE.

VI. Bone awls, on left humerus, 2 and 3 WP'.  
Mica, under bone awls, 4 WP'.  
Terrapin shell, on right tibia, 5WP'.

VII. A. In structure B. 3 C. 2144.

WP'2146 Continued

VIII. 8 inches below the surface.

IX. N. D.

I. WP'2147. II. 45R1. III. Adult. IV. Female.

V. A. Single B. N. D. C. Partially flexed

D. On back E. N. D. F. -- G. SSE-(NNW).

VI. None.

VII. A. Not in structure B. 3 C. 2150.

VIII. 6 inches below the surface.

IX. N. D.

X. "On back with legs flexed at knees and feet under pelvis."

I. WP'2148 (figure VI-12, VI-13). II. 35R1.

III. Adult. IV. Male.

V. A. Single B. N. D. C. Extended D. On back

E. N. D. F. -- G. SSW-NNE.

VI. Small incised bowl (lip handle), at right shoulder, 6WP'.

17 projectile points, over and around skull, 9WP'.

7 bone awls, to rear of skull, 10WP'.

5 small bone needles, to rear of skull, 11WP'.

Copper piece, over left shoulder, 12WP'.

Conch shell, inside 6WP', 7WP'.

Large clam shell, over left side of face, 8WP'.

Otter incisor, over left shoulder, 13WP'.





Figure VI-12. Burial 2148.



Figure VI-13. Detail of burial 2148.

## WP'2148 Continued

Deer shoulder blade, over left hand, 14WP'.  
 Mussel shells, over right hand, 15WP'.  
 Mussel shells, over left hand, 16WP'.

- VII. A. Not in structure. B. 2 C. 2149.
- VIII. 12 inches below the surface.
- IX. N. D.
- X. "Extended on back with skull on right side."
- 
- I. WP'2149. II. 35-0. III. Adult (21). IV. Female.
- V. A. Single B. N. D. C. Extended D. On face  
 E. N. D. F. -- G. N-(S).
- VI. None.
- VII. A. Not in structure B. 5 C. 2148.
- VIII. 14 inches below the surface.
- IX. N. D.
- X. "On stomach with skull on left side and left arm flexed at elbow under chin and hand near elbow of right arm which is extended."
- 
- I. WP'2150 (figure VI-14). II. 40-0. III. Adult (38). IV. Male.
- V. A. Single B. N. D. C. Extended D. On back  
 E. N. D. F. -- G. SW-NE.

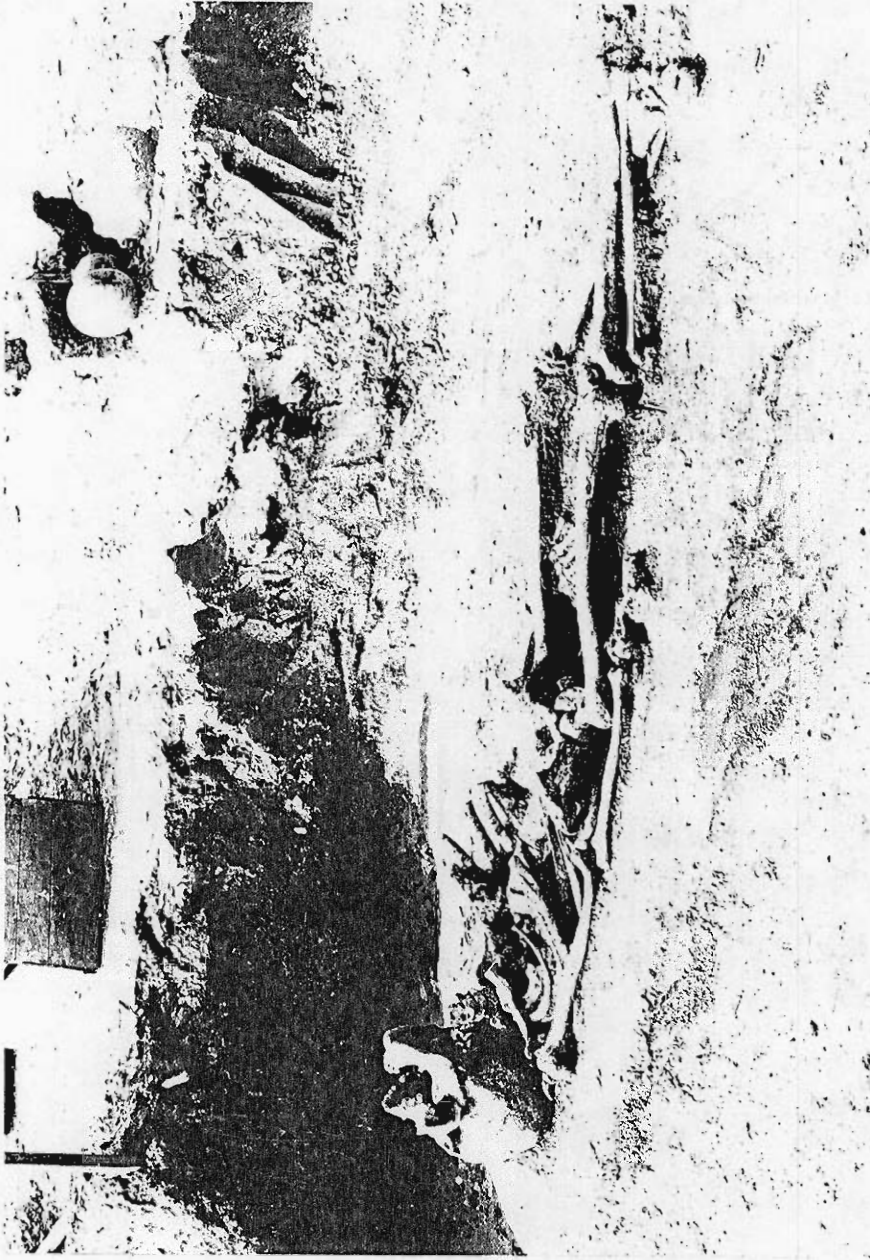


Figure VI-14. Burial 2150.

## WP'2150 Continued

- VI. Perforated bear teeth, around neck, 17WP'.  
Charred corn cob, in open mouth, 18WP'.
- VII. A. Not in structure B. 4 C. 2148.
- VIII. 12 inches below the surface.
- IX. N. D.
- X. "On back with legs crossed at ankles. Head thrown back with mouth open."

I. WP'2151 (figure VI-15). II. 35L1. III. Adult.

IV. N. D.

V. A. Single B. N. D. C. Extended D. On back  
E. N. D. F. -- G. S-N.

VI. Few pot sherds, in area, N. D.

VII. A. Not in structure B. 9 C. 2149.

VIII. N. D.

IX. N. D.

X. "Left arm missing from finger bones to upper half of manus."

I. WP'2152, 2153, 2154. II. 50L1. III. Adults.

IV. N. D.

V. A. Multiple B. Disturbed C. -- D. --

E. In pit F. 8.0 feet x 2.4 feet x ? G. --.



Figure VI-15. burial 2151.

## WP'2152, 2153, 2154 Continued

VI. Water bottle (Moundville Filmed Engraved, flying serpent), resting on side near skull at head of pit, 19WP'.  
 Bone tool, between 19WP' and skull, 20WP'.  
 Pot (plain with 4 handles), near middle of pit, 21WP'.  
 Frog effigy pot, near foot of disturbance, 22WP'.

VII. A. Not in structure B. 12 C. N. D.

VIII. 8 inches below the surface.

IX. N. D.

X. "Disturbance with remains of 3 skeletons."

I. WP'2155. II. 45L2. III. Adult. IV. N. D.

V. A. Single (?) above 2156 B. N. D. C. Extended  
 D. On back E. N. D. F. -- G. NNE-SSW.

VI. None.

VII. A. Not in structure B. 17 C. 2156.

VIII. 6 inches below the surface.

IX. N. D.

I. WP'2156. II. 45L2. III. Child. IV. N. D.

V. A. Single (?) beneath 2155 B. N. D. C. Extended  
 D. On back E. N. D. F. -- G. N-S.

VI. None.

## WP'2156 Continued

VII. A. Not in structure B. 17 C. 2155.

VIII. 12 inches below the surface.

IX. N. D.

I. WP'2157. II. 15R2. III. Adult. IV. N. D.

V. A. Multiple, with 2159 B. N. D. C. Extended  
D. On face E. In pit F. 5.5 feet x 3.5 feet  
x ? G. SSW-NNE.

VI. None.

VII. A. Not in structure B. 10 C. 2159.

VIII. 8 inches below the surface.

IX. N. D.

X. "On stomach right arm under chin and left hand  
under hip."

I. WP'2158. II. 40L3. III. Adult. IV. Female.

V. A. Single B. N. D. C. Partially flexed  
D. On back E. N. D. F. -- G. E-(W).

VI. None.

VII. A. Not in structure B. >20 C. 2160.

VIII. 18 inches below the surface.

IX. N. D.



## WP'2158 Continued

- X. "On back with legs partly flexed with heels at hips."
- I. WP'2159. II. 20R2. III. Adult. IV. N. D.
- V. A. Multiple, with 2157 B. Bundle C. --  
D. -- E. In pit F. 5.5 feet x 3.5 feet x ?  
G. --.
- VI. Water bottle (Moundville Engraved Indented), at skull end of bundle, 23WP'.
- VII. A. Not in structure B. 12 C. 2157.
- VIII. 8 inches below the surface.
- IX. N. D.
- I. WP'2160 (figure VI-16). II. 40L4. III. Adult.
- IV. N. D.
- V. A. Single B. N. D. C. Extended D. On back  
E. N. D. F. -- G. NNE-SSW.
- VI. Bowl (black), back of skull, 24WP'.  
Part of deer antler, (part near deer's skull), at right hand, 25WP'.  
Mica, scattered in grave, 26WP'.
- VII. A. Not in structure B. >20 C. 2158.
- VIII. 15 inches below the surface.
- IX. N. D.

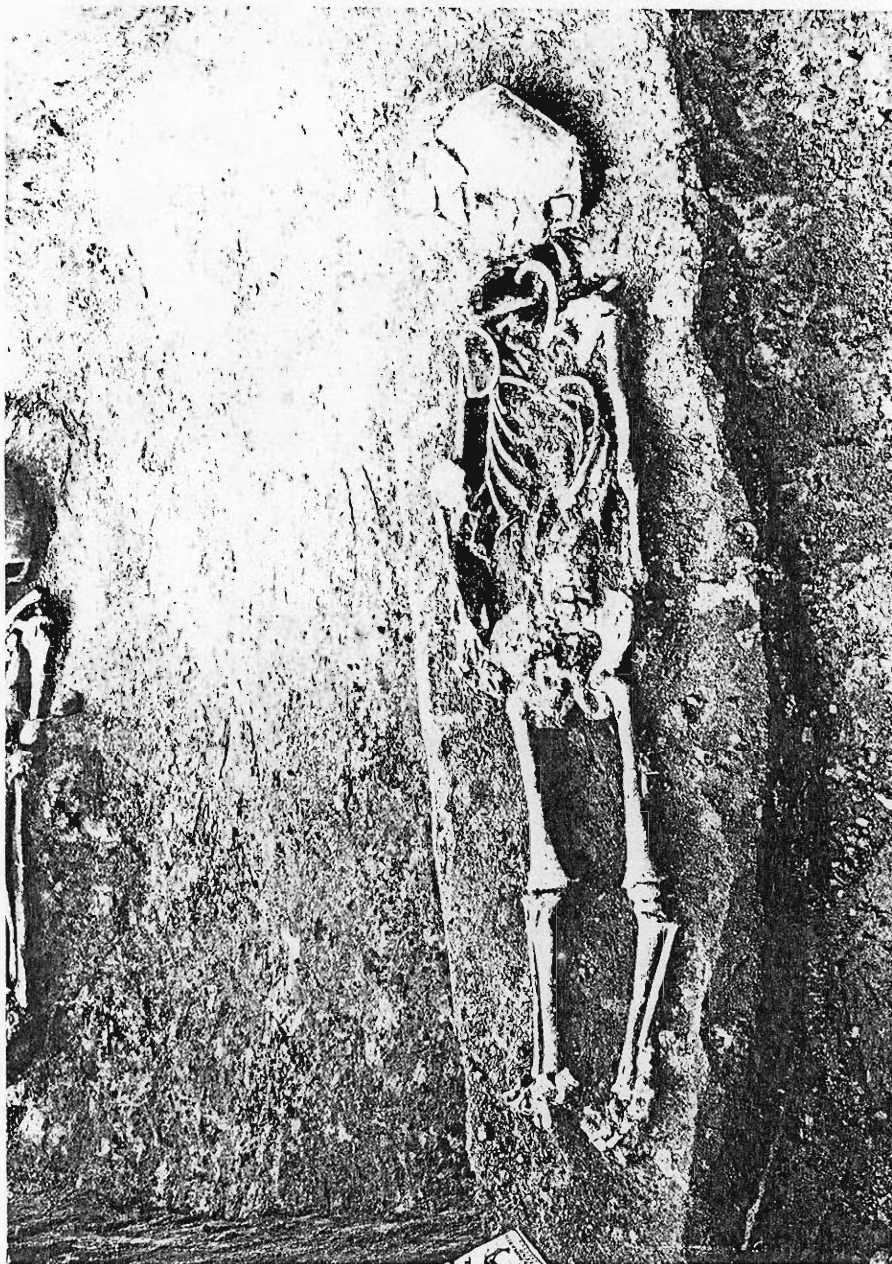


Figure VI-10. Burial 2160.

- I. WP'2161 (figure VI-17). II. 40L4. III. Adult (30). IV. Female.
- V. A. Single B. N. D. C. Partially flexed  
D. On back E. N. D. F. -- G. NNE-(SSW).
- VI. Large "wad" of potters clay (unfired) back of skull, 27WP'.
- VII. A. Not in structure B. >20 C. 2163.
- VIII. 18 inches below the surface.
- IX. N. D.
- X. "On back, legs sharply flexed to right with skull resting on left side."
- 
- I. WP'2162. II. 40L4. III. Adult. IV. N. D.
- V. A. Single B. Disturbed C. -- D. --  
E. N. D. F. -- G. --.
- VI. None.
- VII. A. Not in structure B. >20 C. 2161.
- VIII. 3 inches to 6 inches below the surface.
- IX. "Only femurs found."
- 
- I. WP'2163. II. 45L5. III. Adult. IV. N. D.
- V. A. Single B. N. D. C. Partially flexed D. On back E. N. D. F. -- G. SSE-NNW.

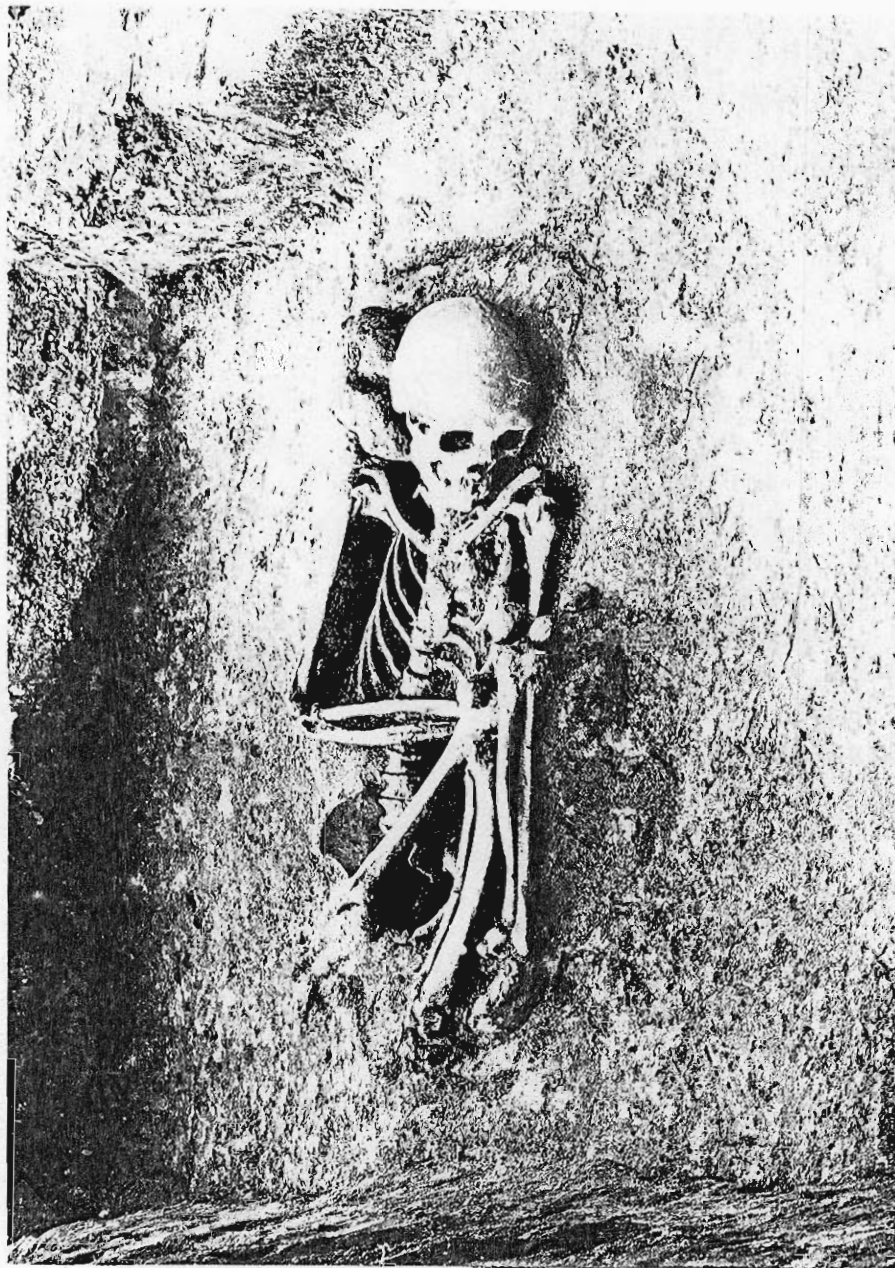


Figure VI-17. Burial 2161.

## WP'2163 Continued

- VI. Mica fragments, at feet, 28WP'.
- VII. A. Not in structure B. >20 C. 2164.
- VIII. N. D.
- IX. N. D.
- X. "On back with legs flexed and knees over chest."

- I. WP'2164. II. 45L4. III. Adult. IV. Male.
- V. A. Single B. N. D. C. Extended D. On face  
E. N. D. F. -- G. NNE-SSW.
- VI. None.
- VII. A. Not in structure B. >20 C. 2163.
- VIII. N. D.
- IX. N. D.
- X. "On stomach, right arm under body, head on right side."

- I. WP'2165 (figure VI-18). II. 55R1. III. Adult.
- IV. N. D.
- V. A. Multiple, with 2166 B. N. D. C. Extended  
D. On back E. N. D. F. -- G. SSW-NNE.
- VI. Water bottle, right of skull, 30WP'.
- VII. A. Not in structure B. 12 C. 2166.

## WP'2165 Continued

VIII. 14 inches below the surface.

IX. N. D.

X. 2165 below 2166.

I. WP'2166 (figure VI-18). II. 55R1. III. Adult.

IV. N. D.

V. A. Multiple, with 2165 B. N. D. C. Extended  
D. On back E. N. D. F. -- G. SSW-NNE.

VI. Frog effigy, right of skull, 29WP'.

VII. A. Not in structure B. 12 C. 2165.

VIII. 8 inches below the surface.

IX. "Long bones missing."

I. WP'2167. II. 60-0. III. Adult (25). IV. Male.

V. A. Single B. N. D. C. Extended D. On back  
E. N. D. F. -- G. ESE-WNW..

VI. Water bottle fragment, over stomach, 31WP'.

VII. A. Not in structure B. 18 C. 2166 (?).

VIII. 6 inches below the surface.

IX. N. D.

X. "Top of skull sliced off and inverted over right  
shoulder. Mandible in place."



Figure VI-18. burials 2165 and 2166. Burial 2165 is below burial 2166.

I. WP'2168, 2169, 2170. II. 60-0. III. N. D.

IV. N. D.

Three disturbed burials in, around and above 2167;  
probably disturbed when 2167 was buried.

I. WP'2171. II. 15R3. III. Adult. IV. N. D.

V. A. Single B. N. D. C. Extended D. On back

E. In pit F. 6.0 feet x 1.8 feet x ? G. NNE-SSW.

VI. Water bottle, left of skull, 39WP'.

VII. A. May be in structure B. 3 C. 2137.

VIII. 12 inches to 18 inches below the surface.

IX. N. D.

X. "...legs and head elevated."



Excavations East of Mound P

There have been no systematic excavations conducted on the plaza side of Mound P. However, over the years, chance discoveries have yielded three burials and a few artifacts. None of the three burials were accompanied by artifacts and all were single interments. Burial 1042 was the extended burial of a child with its head to the east; burial 1043 was a partially flexed adult skeleton with its head also to the east; burial 1044 was the burial of an isolated skull. The artifacts, collected at the same time the above burials were excavated, consisted of two pebble hammers (EP 1,2) two "pitted stones" (EP 3,4) and four clay discoidals EP 5-8.

Excavations in Mound P (Moore 1905:218)

C. B. Moore's excavations in and around Mound P consisted of 20 test pits in the summit of the mound. He discovered nothing in these test pits.