

## CHAPTER V

### Excavations in the Areas Around Mound G

In addition to the excavations by C. B. Moore in 1905-1906, the Alabama Museum of Natural History conducted several small exploratory tests and one major excavation near Mound G. The earliest of the Museum's excavations, in late 1929 and throughout 1930, took the form of several test soundings north and northeast of the mound. These initial excavations were made for the purpose of augmenting the Museum's collection of artifacts; the field notes show clearly that emphasis was placed on the recording of artifacts rather than on the recording of archaeological features. Burials were recorded as incidental companions of pottery vessels; if a burial was unaccompanied by artifacts it was not recorded. By the end of 1930, however, burials were recognized as deserving of a record, but structural features went unnoticed. In 1934, when the major excavation south of Mound G was undertaken, the excavators' field techniques had reached a level of sophistication such that most classes of archaeological features were recognized and recorded (see figure V-7). The last excavation conducted in the area around Mound G (with the exception of the Roadway Excavation in 1939) was a quick salvage job under one

corner of the Civilian Conservation Corps mess supply tent. Because the mess supply tent was located north of Mound G, this small dig will be lumped in with the other small excavations north of the mound.

Excavations North and Northeast of Mound G;  
1929, 1930, 1934.

In late December, 1929 and through January and February of 1930 the team of Jones, Haltom, and the DeJarnettes tested an area to the north-northeast of Mound G. During these excavations they found at least 35 skeletons, which represented at least 18 separate interments. However, they did not record the burials and their associated artifacts; instead, they recorded the whole vessels in the order in which they came out of the ground. They then went back and tried to pencil in burial and skeleton designations next to the field specimen numbers of the artifacts. For presentation in this section, the artifacts associated with the burials have been regrouped under their respective burial-skeleton numbers so that the artifact associations could be preserved.

The burial-skeleton numbering system presumably differentiated between individuals within single burials and individuals within a multiple burial. An

interment of one of more skeletons was given a single burial number and then the skeleton or skeletons in the interment were each given a skeleton number. It should be noted that this system of burial and skeleton numbers used in 1930 was soon replaced by a unified burial numbering system for the Moundville site as a whole. In the latter, unified system each burial was given a number from the master list and the number was prefixed with a within-site area designation. If a multiple burial was encountered the associated burials would be recorded, by burial number, both in the notes and on the field map.

However, in early 1930 north of Mound G the burial-skeleton numbering system was in force and, with the exception of skeleton 34 from burial 18, none of the burials recovered were fitted into the unified numbering system. Why skeleton 34 from burial 18 was renumbered NG1015 while the remainder of the burials were ignored remains a mystery.

The conjunction of the burial-skeleton numbering system and the recording of artifacts rather than archaeological features led to the loss of some data that otherwise would have been recorded. Burials without artifacts, although given numbers in the field, were not recorded in the field notes: there were no artifacts so

there were no places to put the burial number. Of the 35 skeletons recovered during late 1929 and early 1930, 10 were accompanied by artifacts; one, burial 34, was renumbered and will be presented in numerical sequence with the burials recovered in late 1930. The remaining nine burials and their associations were:

Burial 3; Skeleton 3. Associated artifacts:

NG11. Jar: Three rings around vessel mouth; two holes for suspension. Maximum diameter 2.25 inches; diameter at mouth 1.62 inches; height 1.75 inches.

NG12. Bowl: plain. Maximum diameter 3.5 inches; diameter at mouth 2.25 inches; height 2.00 inches.

NG13. Duck effigy bowl. Diameter of vessel 4.62 inches; overall height 2.12 inches; length (head to tail) 5.50 inches.

NG23. Bowl: scalloped design. Maximum diameter 4.00 inches; height 3.25 inches.

NG24. Bowl; notched shoulder. Maximum diameter 4.00 inches; height 3.25 inches.

Burial 4; Skeleton 8. Associated artifacts:

NG3. Bowl: engraved with Ivory Billed Woodpecker. Maximum diameter 4.50 inches; height 3.12 inches (figure V-1).

NG8. Water bottle: Moundville Engraved Indented. No diameter given; overall height 6.00 inches; height of neck 2.00 inches.

No burial number; Skeleton 9. Associated artifacts:

NG25. Water bottle: engraved. Maximum diameter 7.50 inches; height of neck 2.00 inches.

Burial 7; Skeleton 18. Associated artifacts:

NG5. Water bottle: three incised lines plus scroll. Maximum diameter 7.00 inches; diameter at mouth 3.00 inches; overall height 6.62 inches; height of neck 1.75 inches.

NG6. Water bottle: three incised lines plus scroll. Maximum diameter 3.75 inches; diameter at mouth 1.75 inches; overall height 3.50



Figure V-1. Moundville Filmed Engraved bowl, 3NG.

## Burial 7; Skeleton 18 Continued

inches; height of neck 1.25 inches.

NG7. Bone fragments: inside NG6.

Burial 8; Skeleton 19. Associated artifacts:

NG14. Stone disc: scalloped edges and two engraved circles around edge of one face. Remnants of paint on one side. Diameter 8.50 inches; thickness 0.50 inches.

NG15. Spool shaped beads: approximately 0.50 inches in length.

NG17. Globular shell beads: 0.75 to 0.50 inches in length (figure V-2).

Burial 9; Skeleton 20. Associated artifacts:

NG10. Water bottle: engraved. Maximum diameter 6.00 inches; overall height 5.75 inches; height of neck 1.00 inch.

NG26. Pot: small vessel, human eyes and nose on both sides. Maximum diameter 3.50 inches; height 3.00 inches.

Burial 10; Skeleton 21.

NG4. Pot: plain, two handles. Maximum diameter 5.00 inches; height 4.25 inches.

NG10. Water bottle: plain. Maximum diameter 4 inches; diameter at mouth 1.75 inches; overall height 4.75 inches; height of neck 1.75 inches.

Burial 11; Skeleton 22. Associated artifacts:

NG18. Copper ear plugs.

Burial 18; Skeleton 34. Renumbered NG1015.Burial 18; Skeleton 35. Associated artifacts:

NG16. Beads: spool shaped. Approximately 0.37 inches long.

In addition to the artifacts recovered from the burials, two whole effigy vessels (1NG, 2NG), a "bird head effigy" (28NG), and a discoidal (27NG) were recovered and recorded as unassociated. The two whole effigy vessels were,

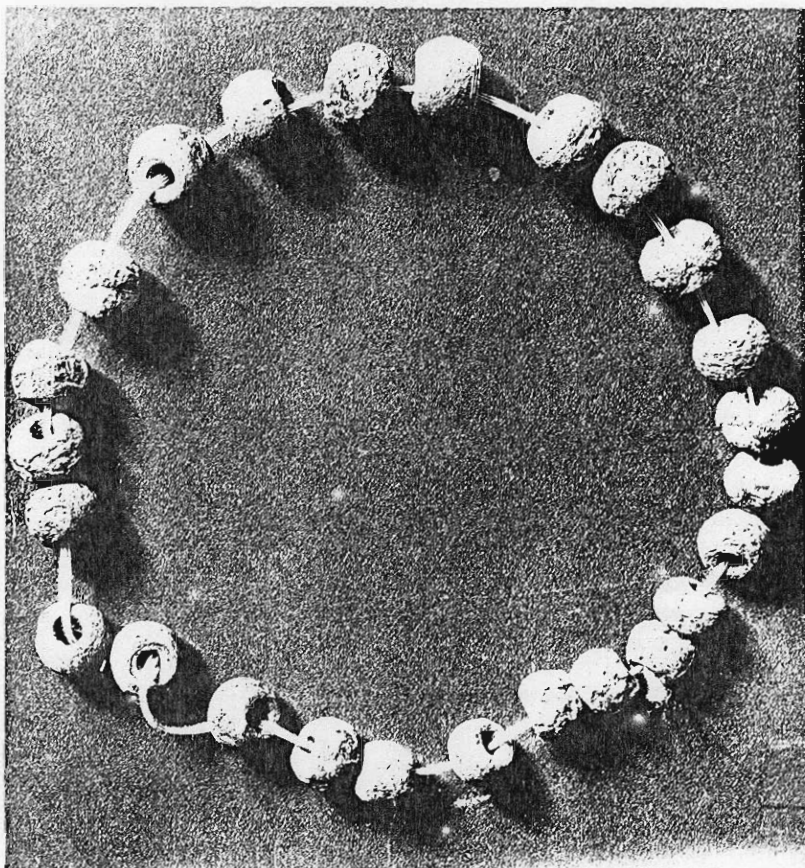


Figure V-2. Shell beads, 17NG.

NG1. Clam shell effigy bowl. Length (front to back) 5.75 inches; width (side to side) 6.75 inches; height 3.00 inches (figure V-3).

NG2. Frog effigy bowl. Length (head to tail) 6.75 inches; diameter of bowl 5.75 inches; diameter of mouth 3.50 inches; height 4.50 inches (figure V-4).

In February, and again in late December of 1930, the DeJarnettes, Haltom and Jones excavated additional small areas north of Mound G. Burials NG1006 to NG1014, NG1016 to NG1019 and artifacts 29NG to 79NG were recovered. The only difference between this excavation and those of early 1930 was that burials and their associations were recorded separately from the unassociated artifacts. On the 4th of July 1933, one burial NG1686 was discovered protruding from a drainage ditch near the mound. Excavation showed this burial to be unassociated either with other burials or grave goods. In April 1934 a small area was excavated in the west corner of the Civilian Conservation Corps mess supply tent. Burials NG1885 to NG1887, 1889 to 1891 and one artifact 79bNG were recovered. One of the burials recovered was that of an acondroplastic dwarf (NG1889). This burial has been described by Snow (1943).



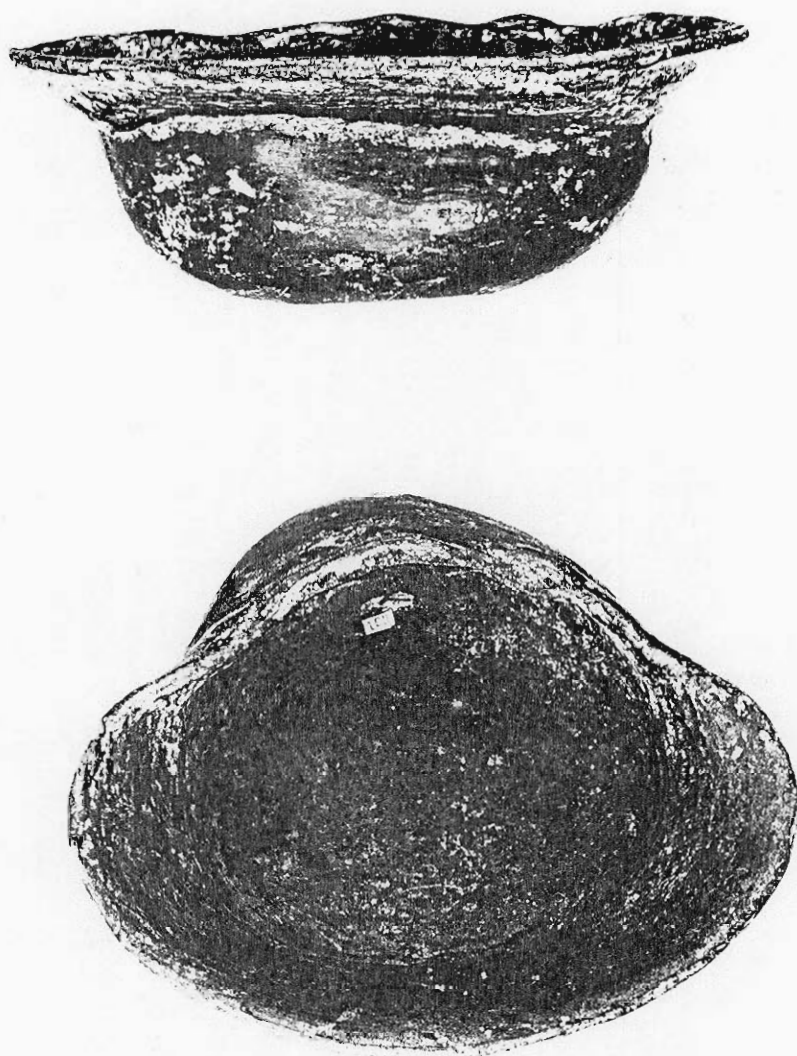


Figure V-3. Moundville Black Filmed shell effigy vessel, 1NG.

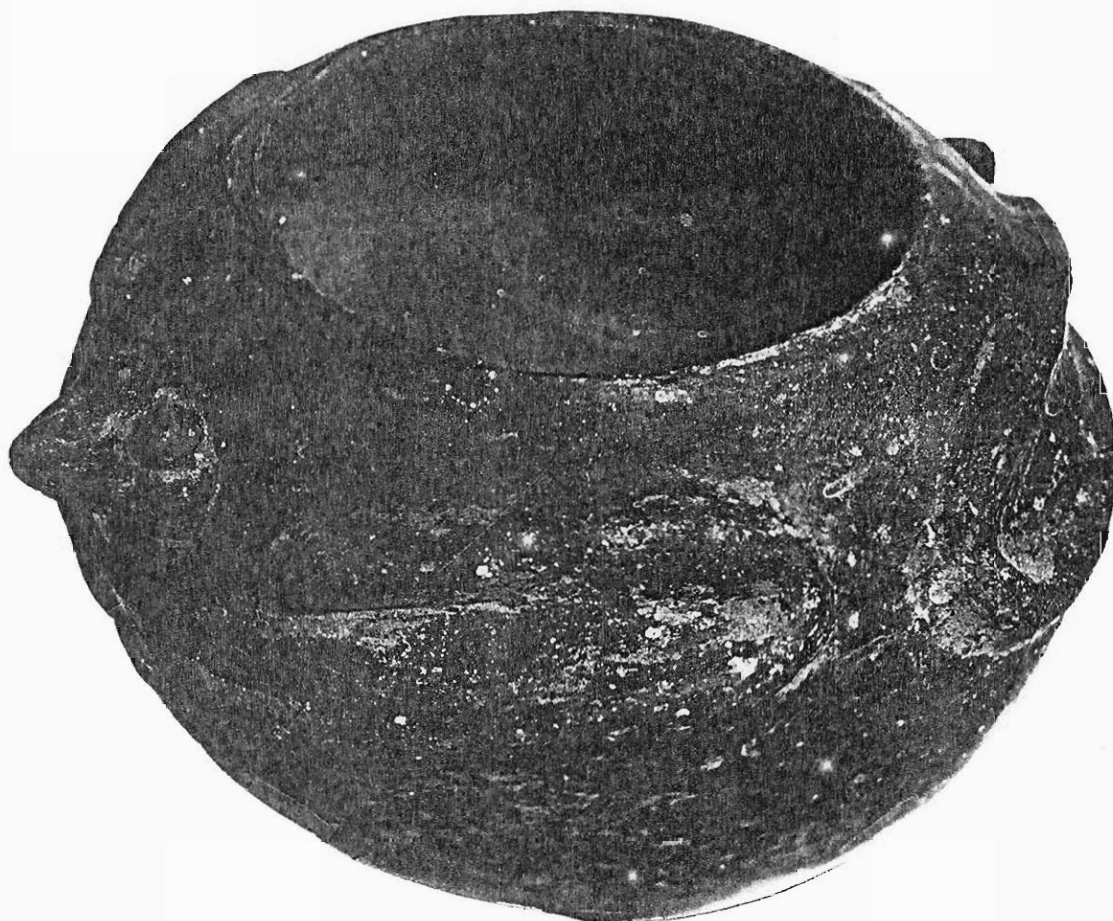


Figure V-4. Frog effigy bowl, 2NG.

The burials from the December 1930 and April 1934 excavations are described below. A list of the artifacts recovered from the area north of Mound G during these excavations follows the burial descriptions.

Excavations North of Mound G  
 Burials 1006-1019, 1686, 1885-1887, 1889-  
 1891.  
 Guide to Burial Descriptions.

N. D. = no data; - = not applicable

- I. Site designation and burial number (i.e. NG1006).
- II. Not used.
- III. Age.
- IV. Sex (if given on C. E. Snow's burial cards).
- V. Form of Burial:
  - A. Single - or multiple (if multiple numbers of associated burials given).
  - B. Articulated, partially articulated, bundle, disturbed, skull only.
  - C. Extended, partially flexed, fully flexed.
  - D. On back, on right side, on left side, on face.
  - E. In pit, no pit.
  - F. Dimensions of pit.
  - G. Orientation (head-feet). Directions enclosed in parentheses (N-S) or N-(S) indicate uncertainty in one or both directions.
- VI. Internal association and locations with field specimen numbers: e. g. Pot, right shoulder, 100NG.
- VII. Not used.
- VIII. Stratigraphic and other associations.
- IX. Bones recovered; skeletal condition.
- X. Remarks.

- I. NG1006. III. N. D. IV. N. D.  
 V. A. Single B. N. D. C. Extended D. On back  
 E. N. D. F. -- G. N-S.  
 VI. None.  
 VIII. 18 inches below the surface.  
 IX. "In last stages of decay" no bones recovered.

- I. NG1007. III. Adult (22). IV. Female.  
 V. A. Multiple, with 1008 B. N. D. C. Extended  
 D. On back E. N. D. F. -- G. S-N.  
 VI. Water bottle (Moundville Filmed Engraved), left  
 rear of skull, 30NG (figure V-5).  
 Dish, right rear of skull, (resting on large  
 sherd) 31NG.  
 Whetrock, back of skull, 59NG.  
 VIII. 12 inches below the surface.  
 IX. "Bones in nice condition." Most of skeleton  
 recovered.

- I. NG1008. III. Infant. IV. N. D.  
 V. A. Multiple, with 1007 B. N. D. C. Extended  
 D. On back E. N. D. F. -- G. S-N.  
 VI. Pot (four handles each decorated with three nodes),  
 N. D., 32NG.  
 VIII. 12 inches below the surface; just below knee of  
 1007.

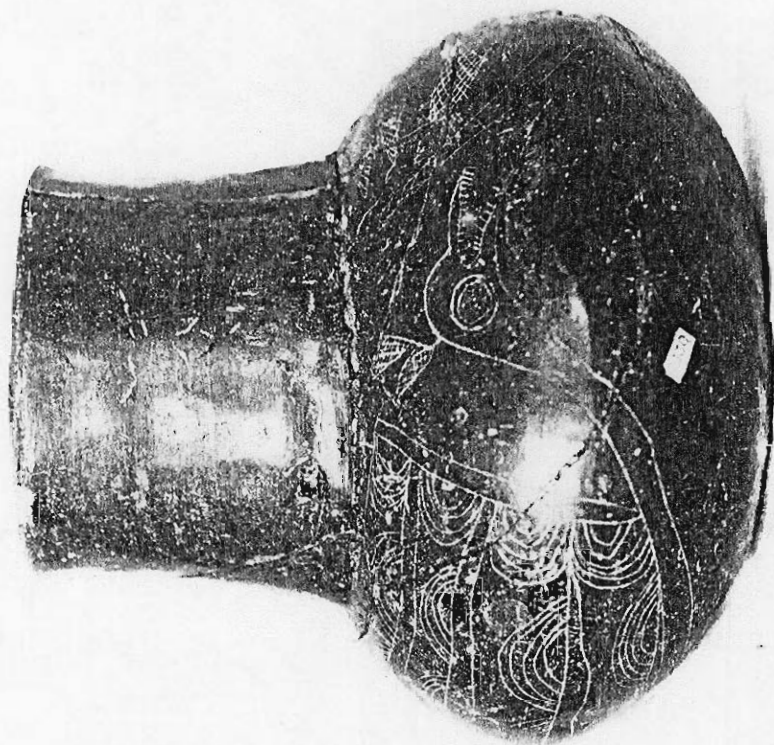


Figure V-5. Moundville Filmed Engraved water bottle, 30NG.

NG1008 continued

IX. N. D.

I. NG1009. III. N. D. IV. N. D.

V. A. Single B. N. D. C. N. D. D. N. D.

E. N. D. F. -- G. N-S.

VI. Shell beads (perforated) at both wrists and at head, 33NG.

VIII. 10 inches below the surface; just south of burials 1007 and 1008.

IX. Skeleton 5 feet 10 inches tall.

I. NG1010. III. N. D. IV. N. D.

V. A. Single B. N. D. C. N. D. D. N. D.

E. N. D. F. -- G. E-W.

VI. None.

VIII. 12 inches below the surface; between 1007 and 1009.

IX. N. D.

I. NG1011. III. N. D. IV. N. D.

V. A. Single B. Disturbed C. -- D. --

E. N. D. F. -- G. S-(N).

## NG1011 Continued

VI. None.

VIII. 8 inches below the surface.

IX. "Legs plowed away, saved part of skeleton."

I. NG1012. III. N. D. IV. N. D.

V. A. Single B. N. D. C. Extended D. On back

E. N. D. F. -- G. E-W.

VI. Beads (10), left wrist, 34NG.  
Beads (8), right wrist, 35NG.  
Copper pendant, chest, 36NG.  
Beads, in area of neck, 37NG.  
Graphite, right hand, 38NG.

VIII. 12 inches below the surface; at head of 1009.

IX. N. D.

I. NG1013; No data.

I. NG1014. III. N. D. IV. N. D.

V. A. Single B. Disturbed C. -- D. --

E. N. D. F. -- G. (E-W).

VI. None.

VIII. "Just below the surface."

IX. N. D.



- I. NG1015 (Skeleton 34, 24 Feb. 1930). III. N. D.
- IV. N. D. V. N. D.
- VI. Greenstone axe, N. D., 19NG.  
Beads (16), neck area, 20NG.  
Oblong copper gorget, N. D., 22NG (figure V-6).  
Shells, N. D., 21NG.
- VIII. N. D.
- IX. N. D.
- X. This is the only burial from the early 1930 excavations north of Mound G which was fitted into the burial numbering system for the site as a whole.

- I. NG1016. III. Adult (24). IV. Male.
- V. A. Single B. N. D. C. Extended D. On back  
E. N. D. F. -- G. S-N.
- VI. Duck effigy bowl, right side of skull, 39NG.  
Shells, at left hip, 40NG.  
Bits of reeds, under shells, 41NG.  
Lower beak of Ivory Billed Woodpecker, between feet, 42NG.
- VIII. Near skeleton 1007.
- IX. N. D.

- I. NG1017. III. N. D. IV. N. D.
- V. A. Multiple, with 1018 B. Disturbed C. --  
D. -- E. N. D. F. -- G. (S-N).
- VI. Bowl (crushed), left wrist, 43NG.  
Bowl (human effigy head on rim), N. D., 44NG.

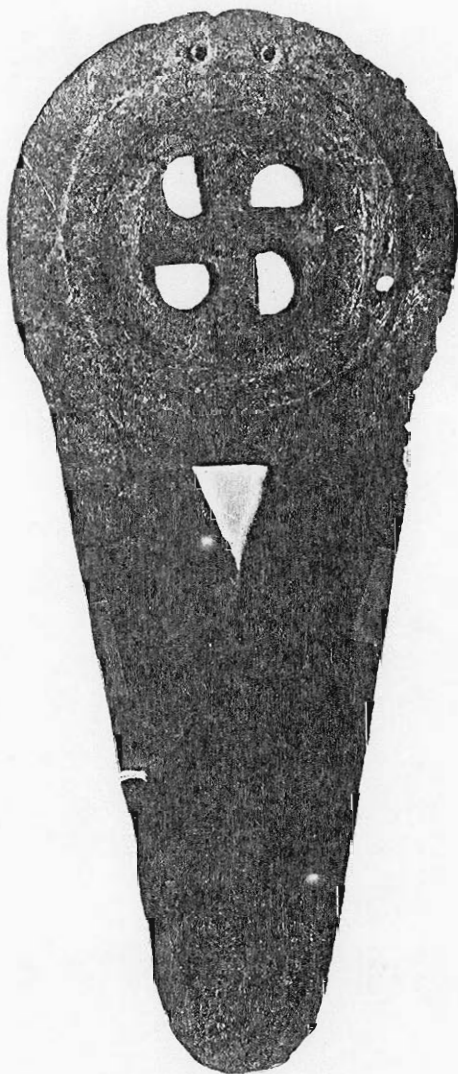


Figure V-6. Oblong copper gorget, 22NG.

## NG1017 Continued

VIII. "Directly over skeleton 1018."

IX. N. D.

I. NG1018. III. N. D. IV. N. D.

V. A. Multiple, with 1017 B. N. D. C. Extended  
D. On back E. N. D. F. -- G. S-N.VI. Bone awl, right hand, 45NG.  
Shells, at feet, 47NG.

VIII. "Below sk. 1017."

IX. N. D.

I. NG1019. III. N. D. IV. N. D.

V. A. Single B. Disturbed C. -- D. --  
E. N. D. F. -- G. --.

VI. Beads, around neck, 65NG.

VIII. "Just below the surface."

IX. N. D.

I. NG1686. III. Adult. IV. N. D.

V. A. Single B. Disturbed C. -- D. -- E. N. D.  
F. -- G. --.

VI. None.

## NG1686 Continued

VIII. 12 inches below the surface. "Head cut off by ditch."

IX. None.

Note: Burials 1885 to 1891 come from an area covered by the Civilian Conservation Corps' mess supply tent.

I. NG1885. III. Adult. IV. N. D.

V. A. Single B. N. D. C. Extended D. On back  
E. N. D. F. -- G. E-W.

VI. Small water bottle, left side of skull, 79NG.

VIII. 14 inches below the surface.

IX. A crushed skull recovered.

I. NG1886. III. Adult. IV. N. D.

V. A. Single B. N. D. C. Extended D. On back  
E. N. D. F. -- G. E-W.

VI. None.

VIII. 16 inches below the surface.

IX. Badly crushed skull recovered.

- I. NG1887. III. N. D. IV. N. D.  
 V. A. Single B. Disturbed C. Extended D. On back E. N. D. F. -- G. E-W.  
 VI. None.  
 VIII. 30 inches below the surface.  
 IX. Crushed skull recovered; post hole through skull.

- I. NG1889. III. Adult (24). IV. Female Dwarf.  
 V. A. Multiple, with 1890 B. N. D. C. Extended D. On face E. N. D. F. -- G. E-W.  
 VI. None.  
 VIII. Very near surface; disturbed by plow.  
 IX. See Snow (1943).

- I. NG1890. III. Adolescent (?). IV. N. D.  
 V. A. Multiple, with 1889 B. N. D. C. Extended D. On face E. N. D. F. -- G. E-W.  
 VI. None.  
 VIII. Feet 14 inches below the surface, head 2 inches below the surface.  
 IX. A good part of skeleton recovered.  
 X. Below 1889.

- I. NG1891. III. Child. IV. N. D.  
V. A. Single B. N. D. C. Fully flexed. D. On  
right side E. N. D. F. -- G. S-N.  
VI. None.  
VIII. 15 inches below the surface.  
IX. Entire skeleton recovered.

Artifacts recovered from the December 1930 and April 1934 excavation north of Mound G are listed in Table V-1. The artifacts represented in this list were those artifacts without burial associations.

TABLE V-1

Unassociated Artifacts Recovered  
from North of Mound G, 1930, 1934

Artifact Class	Count	Catalogue Numbers (Suffixed by -NG)
<hr/>		
POTTERY		
Fish effigy vessel	1	57
Misc. effigy vessel	1	73
Water bottle (plain)	1	56
Pot (plain)	1	55
Human effigy head (from pot)	1	56
Duck effigy head (from pot)	1	80
Pipe	1	46
BONE		
Awls	17	46-51, 61, 62, 68-71, 74-78, 81.
Awl (from tooth)	1	64
STONE		
Discoidals	1	79
Axe fragments	1	67
Stone pendant	1	79a
"Pitted" (nutting?) stones	3	52-54.
"Whetrocks"	1	66
Unworked greenstone	1	58
"Flints"	?	60

Excavations South and Southwest of Mound G.

During January of 1934 the Alabama Museum of Natural History excavated an area south and southwest of Mound G. Initially the area to be excavated was divided into two side-by-side strips, each 125 feet long and 67.5 feet wide. The western-most strip was designated southwest of Mound G and the easternmost strip was designated south of Mound G. This excavation was originally devised to provide in situ burials for a museum shed which was to be built over them.

Data which was found immediately outside the area of the proposed museum area, and which otherwise might have been recorded, were neglected by the excavators. Initially only the burials which were clearly within the proposed museum area were left in situ; the remainder of the burials which had been unearthed were removed. When it became apparent that the area to be excavated had grown beyond the museum shed proper, a plane table map of the excavation was begun. Burials which had been left in situ were mapped as were all subsequently excavated archaeological features. The data which had already been taken up, however, were lost to the map.



Figure V-7 was prepared from the original field map. The blank areas on figure V-7 to the north, east, and south of burials SG1730 to SG1735 and in the northwest quadrant of the area southwest of Mound G were the areas excavated prior to the time the area was mapped. Burials SG1730 to SG1735 were the burials left in situ within the burial museum.

One of the earliest attempts to establish a grid system for excavations at Moundville was made during the excavations south and southwest of Mound G. However the system employed was based on the numbering of each square in the excavation rather than the establishment of a coordinate system in which each square was defined by the intersection of the coordinates. The unwieldy nature of this system caused it to be abandoned early in the excavation. The only reference point which remained inside the excavated area was the line which separated the area into halves.

The distinction between south and southwest of Mound G which was established in the field will be retained in the discussion of the excavations which follows. All features and artifacts recovered by the excavators were numbered with reference to one or the other of the halves. Only the structural features, which are numbered here for the first time, have been given a set of numbers

## EXCAVATION SOUTH &amp; SOUTHWEST OF MOUND G



Figure V-7. Plan of excavation south and southwest of Mound G.

which override the artificial distinction between the two halves of the excavation. The structure designated S-5 was found in the half designated south of Mound G; the remaining structures (S-1 to S-4) were either wholly or mostly in the half designated southwest of Mound G.

Excavation South of Mound G.

The archaeological features recovered south of Mound G included 53 burials, one complete structural feature (S-5), numerous incomplete post mold and wall trench patterns, two garbage pits, one double firebasin and four single firebasins. Most of the burials and all the other features were mapped and appear in figure V-7.

The northernmost firebasin, in the northwest corner of the excavation south of G, was a double firebasin. The inside diameter of the northernmost bowl of this firebasin was 18 inches; the inside diameter of the southernmost bowl was 14 inches. A clay pipe (22SG) was found in the southernmost bowl. The remaining four firebasins found in this half of the excavation were all single firebasins. Moving from north to south, the northernmost of these four, near burial SG1810, had an inside diameter of 24 inches; the next firebasin, near burials SG1881 and SG1882, had an inside diameter of

13 inches; still farther to the south the firebasin near burial SG1883 had an inside diameter of 14 inches; the southernmost of the four, south of burial SG1878, had an inside diameter of 11 inches.

Both the garbage pits discovered during the excavation were in the half designated south of Mound G. The largest of these garbage pits was in the northern section of this half. It measured 30 feet (north-south) by 6 feet (east-west). Burial SG1776 was discovered within the confines of this garbage pit. The other garbage pit was found near the southeast corner of structure S-2. It measured approximately 10 feet (north-south) by 6 feet (east-west). No record was made of the artifacts recovered from these garbage pits.

The single coherent structural pattern found within this half of the excavation was near the large garbage pit in the northern section of the excavation. This structure, designated S-5, was a small subrectangular structure. The portions of the structure which were recovered measured 12 feet (east-west) by 18 feet (north-south). Burials SG1772 and SG1777 were associated with an oval soil stain which intersected the northern end of the western wall trench. Burials SG1769 and SG1770 were at the northern end of the easternmost wall trench.

It seems probable that the northern side of structure S-5, between the burials, was open. Features interior to S-5 consisted of several large post molds and one short wall trench.

South of structure S-5 there were several large wall trench segments. That these wall trenches have no observable pattern was due in part to the failure of the excavators to record many of the features in the area.

Still farther to the south in the excavation south of G there were several wall trenches associated with the east and south side of structure S-2a. There was also a semicircular wall trench southeast of structure S-2a. Neither of these wall trench patterns was sufficiently complete to warrant the assignment of a structure number.

The remaining class of features to be described are the burials. All the burials which were recorded on the field map are presented in figure V-7; all the burials which were recovered during the excavation are described. If the burial also appears in figure V-7 it is so noted in the description.

## Excavations South of Mound G

Burials 1700-1714, 1730-1737, 1763, 1764, 1769, 1770, 1772,  
1774, 1776-1779, 1785, 1786, 1808-1817, 1877-1884.

## Guide to Burial Descriptions

N. D. = No data; - = not applicable

- I. Site designation and burial number (i.e. SG1700).
- II. Not used.
- III. Age.
- IV. Sex (if given on C. E. Snow's burial cards).
- V. Form of burial
  - A. Single - or multiple (if multiple numbers of associated burials given).
  - B. Articulated, partially articulated, bundle, disturbed, skull only.
  - C. Extended, partially flexed, fully flexed.
  - D. On back, on right side, on left side, on face.
  - E. In pit, no pit.
  - F. Dimensions of pit.
  - G. Orientation (head-feet). Cardinal directions enclosed in parentheses (N-S) or N-(S) indicates an uncertainty in one or both directions.
- VI. Internal associations and locations with field specimen numbers: e.g. Pot, right shoulder, 100SW.
- VII. External associations:
  - A. In structure, not in structure.
  - B. Nearest firebasin, in feet.
  - C. Nearest neighbor burial number.

- VIII. Stratigraphic and other associations.
- IX. Bones recovered; skeletal condition.
- X. Remarks.

Burials South of Mound G

- I. SG1700. III. Child. IV. N. D.
  - V. A. Single B. N. D. C. Extended D. On back  
E. N. D. F. -- G. S-N.
  - VI. "Whetrock", N. D., 1SG.
  - VII. N. D.
  - VIII. 30 inches below the surface.
  - IX. About half of skeleton recovered.
  - X. Not on field map.
- 
- I. SG1701. III. Infant. IV. N. D.
  - V. A. Single B. N. D. C. Extended D. On back  
E. N. D. F. -- G. N. D.
  - VI. None.
  - VII. N. D.
  - VIII. 30 inches below the surface.
  - IX. N. D.
  - X. Not on field map.

- I. SG1702. III. Infant. IV. N. D.  
 V. A. Single B. N. D. C. N. D. D. N. D.  
 E. In pit F. N. D. G. N. D.  
 VI. None.  
 VII. N. D.  
 IX. No skeletal material recovered; "only a few fragments of skull remaining."  
 X. Not on field map.

- I. SG1703. III. Infant or young child. IV. N. D.  
 V. A. Multiple, with 1704 B. N. D. C. Extended  
 D. On back E. N. D. F. -- G. N. D.  
 VI. Discoidal, to left of skeleton, 2SG.  
 Galena, to left of skeleton, 3SG.  
 VII. N. D.  
 VIII. 36 inches below the surface.  
 IX. "Bones rotten", no bones recovered.  
 X. Not on field map. "Resting on chest of 1704".

- I. SG1704. III. Adult. IV. N. D.  
 V. A. Multiple, with 1703 B. N. D. C. Extended  
 D. On back E. N. D. F. -- G. N. D.  
 VI. None.



## SG1704 Continued

VII. N. D.

VIII. 36 inches below the surface.

IX. Most of skull recovered; 5 feet 1 inch tall.

X. Not on field map.

I. SG1705. III. Adult. IV. N. D.

V. A. Multiple, with 1706 B. N. D. C. Extended  
D. On back E. N. D. F. -- G. N. D.

VI. None.

VII. N. D.

VIII. 36 inches below the surface; to right of skeleton 1706.

IX. A crushed skull recovered; 5 feet 3 inches tall.

X. Not on field map.

I. SG1706. III. Adolescent. IV. N. D.

V. A. Multiple, with 1705 B. N. D. C. N. D.  
D. N. D. E. N. D. F. -- G. N. D.

VI. None.

VII. N. D.

VIII. 36 inches below the surface; to left of 1705.

## SG1706 Continued

IX. A few skull fragments recovered.

X. Not on field map.

I. SG1707. III. N. D. IV. N. D.

V. A. Single B. N. D. C. N. D. D. N. D.

E. N. D. F. -- G. N. D.

VI. Large fragment of pot, back of skull, 4SG.

VII. N. D.

VIII. 40 inches below the surface.

IX. A few pieces of bone recovered.

X. Not on field map.

I. SG1708. III. Adult. IV. N. D.

V. A. Single B. Disturbed C. -- D. --

E. N. D. F. -- G. N. D.

VI. Pottery fragments to rear of skull, 5SG.

VII. N. D.

VIII. 40 inches below the surface.

IX. No skeletal material recovered.

X. Below and disturbed by burial 1704. Not on field map.

- I. SG1709. III. N. D. IV. N. D.  
 V. A. Single B. N. D. C. Extended D. On back  
 E. N. D. F. -- G. E-W.  
 VI. None.  
 VII. N. D.  
 VIII. 22 inches below the surface.  
 IX. A few fragments of skull recovered.  
 X. Not on field map.

- I. SG1710. III. Infant. IV. N. D.  
 V. A. Single B. N. D. C. Extended D. On back  
 E. In pit F. N. D. G. N. D.  
 VI. None.  
 VII. N. D.  
 VIII. 42 inches below the surface. "In pit deep in sub soil".  
 IX. No skeletal material recovered.  
 X. Not on field map.

- I. SG1711. III. Infant. IV. N. D.  
 V. A. Single B. N. D. C. Extended D. On back  
 E. In pit F. N. D. G. N. D.  
 VI. Discoidal (made from curved base of pot), N. D., 7SG.

## SG1711 Continued.

VII. N. D.

VIII. 36 inches below the surface.

IX. No skeletal material recovered.

X. Not on field map.

I. SG1712. III. Adult. IV. N. D.

V. A. Multiple, with 1713 B. N. D. C. Extended  
D. On back E. N. D. F. -- G. N. D.

VI. None.

VII. N. D.

VIII. 28 inches below the surface. By the side of 1713.

IX. A few bone fragments recovered; "skeleton is 5' tall".

X. Not on field map.

I. SG1713. III. Adult. IV. N. D.

V. A. Multiple, with 1712 B. N. D. C. Extended  
D. On back E. N. D. F. -- G. N. D.

VI. None.

VII. N. D.

VIII. 28 inches below the surface.

IX. A few bone fragments recovered; 5 feet tall.

X. Not on field map.

- I. SG1714. III. Child. IV. N. D.
- V. A. Single B. N. D. C. Extended D. On back  
E. N. D. F. -- G. N. D.
- VI. Pot fragment, under skull, 8SG.
- VII. N. D.
- VIII. 28 inches below the surface.
- IX. A few pieces of skull recovered; "24" tall".
- X. Not on field map.

- I. SG1730. III. Adult. IV. N. D.
- V. A. Multiple, with 1731 B. Partially articulated  
C. Extended D. On back E. In pit F. 6.0 feet  
x 2.7 feet x ? G. N-S.
- VI.. Shell beads, scattered, 9SG.  
Shell gorget, between 1730 and 1731, 10SG.
- VII. A. Not in structure B 7 C. 1731.
- VIII. 36 inches below the surface.
- IX. No bones recovered; 5 feet tall.
- X. Skeleton had been moderately disturbed.

- I. SG1731. III. Adult. IV. N. D.
- V. A. Multiple, with 1730 B. Articulated C. Extended  
D. On back E. In pit F. 6.0 feet x 2.7 feet x ?

## SG1731 Continued

G. N-S.

VI. A. 5 pints of shell beads, scattered over right arm and chest, 9SG.  
Decorated water bottle, behind skull, 11SG.  
Copper pendant, N. D., 12SG.

VII. A. Not in structure B. 8 C. 1730.

VIII. 36 inches below the surface.

IX. No bones recovered; skeleton "5'6" tall".

I. SG1732. III. Adult. IV. N. D.

V. A. Single B. Articulated C. Extended D. On back E. In pit F. 4.7 feet x 1.3 feet x ?  
G. N. D.

VI. Stone gorget, in front of left cheek, 13SG.  
One-half a pot, near right elbow, 14SG.

VII. A. Not in structure B. 10 C. 1731.

VIII. 12 inches below the surface.

IX. No bones recovered; skeleton 4 feet 11 inches tall.

X. Left arm folded back at elbow to skull; right hand at left elbow.

I. SG1733. III. Adult. IV. N. D.

V. A. Single B. Articulated C. Extended D. On back E. In pit F. 5.3 feet x 1.3 feet x ?

## SG1733 Continued

G. E-W.

VI. None.

VII. A. Not in structure B. 12 C. 1731.

VIII. 24 inches below the surface.

IX. "Bone rotten. 5 feet 1 inch tall".

X. Right arm folded back at elbow to skull; left hand on right elbow.

I. SG1734. III. Adult. IV. N. D.

V. A. Single (may be multiple with 1735)

B. Articulated C. Extended D. On back E. In pit F. 5.5 feet x 1.3 feet x ? G. S-N.

VI. None.

VII. A. Not in structure B. 20 C. 1735.

VIII. 24 inches below the surface. Pit cut into feet of pit of burial 1735.

IX. No bones recovered. Skeleton 5 feet 2 inches tall

I. SG1735. III. Child. IV. N. D.

V. A. Single, (may be multiple with 1734)

B. Articulated C. Extended D. On back E. In pit F. 2.8 feet x 1.0 feet x ? G. N-S.

## SG1735 Continued

- VI. Plain pot (4 handles), on left side of skull, 15SG.  
Small decorated bowl, right side of skull, 16SG.  
Duck effigy bowl, back of skull, 17SG.
- VII. A. Not in structure B. 20 C. 1734.
- VIII. Pit intersects the pit of 1734.
- IX. No bones recovered.
- X. "Head of child turned on left side."

- I. SG1736. III. Infant. IV. N. D.
- V. A. Single B. N. D. C. N. D. D. N. D.  
E. N. D. F. N. D. G. N. D.
- VI. Copper pendant, N. D., 18SG.
- VII. N. D.
- VIII. N. D.
- IX. No bones recovered.
- X. Not on field map.

- I. SG1737. III. Adult. IV. N. D.
- V. A. Single B. N. D. C. Fully flexed D. N. D.  
E. N. D. F. N. D. G. N. D.
- VI. Stone discoidal, N. D., 20SG.  
Pottery discoidal., N. D., 21SG.
- VII. N. D.



## SG1737 Continued

VIII. 26 inches below the surface.

IX. A few bone fragments recovered.

X. Not on field map.

I. SG1763. III. Adult. IV. N. D.

V. A. Multiple, with 1764 B. N. D. C. Extended  
D. On back E. N. D. F. NE-SW.

VI. None.

VII. A. Not in structure B. 13 C. 1764.

VIII. 24 inches below the surface.

IX. No bones recovered.

X. In figure V-7.

I. SG1764. III. Adult. IV. N. D.

V. A. Multiple, with 1763 B. N. D. C. Extended  
D. On back E. N. D. F. -- G. NE-SW.

VI. None.

VII. A. Not in structure B. 14 C. 1763.

VIII. 24 inches below the surface.

IX. No bones recovered.

X. In figure V-7.

- I. SG1769. III. Adult. IV. N. D.  
 V. A. Single B. N. D. C. Extended D. On back  
 E. N. D. F. -- G. S-N.  
 VI. None.  
 VII. A. Associated with, but not in structure.  
 B. >20 C. 1770.  
 VIII. 24 inches below the surface.  
 IX. No bones recovered.  
 X. In figure V-7.

- I. SG1770. III. Adult. IV. N. D.  
 V. A. Single B. Disturbed C. -- D. --  
 E. N. D. F. -- G. ---.  
 VI. None.  
 VII. A. In structure B. >20 C. 1769.  
 VIII. 24 inches below the surface.  
 IX. No bones recovered.  
 X. In figure V-7.

- I. SG1772. III. Child. IV. N. D.  
 V. A. Multiple, with 1777 B. N. D. C. Extended  
 D. On back E. In pit F. Approximately 7 feet in  
 diameter G. NNE-SSW.

## SG1772 Continued

- VI. None.
- VII. A. Associated with but not in a structure.  
B. >20 C. 1777.
- VIII. 30 inches below the surface.
- IX. No bones recovered; very rotten.
- X. In figure V-7.

- I. SG1774. III. Adult. IV. N. D.
- V. A. Single B. N. D. C. Extended D. On back  
E. N. D. F. -- G. ESE-WNW.
- VI. None.
- VII. A. Not in structure B. >20 C. 1772.
- VIII. 28 inches below the surface.
- IX. Bones very rotten; no bones recovered.
- X. In figure V-7.

- I. SG1776. III. Young Child. IV. N. D.
- V. A. single B. N. D. C. Extended D. On back  
E. N. D. F. -- G. NNW-SSE.
- VI. None.
- VII. A. Not in structure B. >20 C. 1774.
- VIII. 30 inches below the surface; in garbage pit.

## SG1776 Continued

IX. Bones rotten; no bones recovered.

X. In figure V-7.

I. SG1777. III. Adult. IV. N. D.

V. A. Multiple, with 1772 B. N. D. C. Extended  
D. On back E. N. D. F. -- G. NNE-SSW.

VI. None.

VII. A. Associated with but not in structure.  
B. >20 C. 1772.

VIII. 36 inches below the surface.

IX. Bones rotten; no bones recovered.

X. In figure V-7.

I. SG1778. III. Adult. IV. N. D.

V. A. Single B. N. D. C. Extended D. On back  
E. N. D. F. -- G. ENE-(WSW).

VI. None.

VII. A. Not in structure B. >20 C. 1779.

VIII. 24 inches below the surface.

IX. A few skull fragments recovered.

X. In figure V-7.

- I. SG1779. III. Adult. IV. N. D.
- V. A. Single B. N. D. C. Fully flexed D. on left side E. N. D. F. -- G. N-(S).
- VI. None.
- VII. A. Not in structure B. >20 C. 1778.
- VIII. 24 inches below the surface.
- IX. No bones recovered.
- X. In figure V-7.

- I. SG1785. III. Adult. IV. N. D.
- V. A. Single B. Disturbed C. Extended D. On back E. N. D. F. -- G. NNE-SSW.
- VI. None.
- VII. A. Not in structure B. 18 C. 1786.
- VIII. 5 inches below the surface.
- IX. No bones recovered. Skeleton 5 feet 3-1/2 inches tall.
- X. In figure V-7.

- I. SG1786. III. N. D. IV. N. D.
- V. A. Single B. N. D. C. Extended D. On back E. N. D. F. -- G. N-S.
- VI. Bowl (small, "coarse"), on chin, 24SG.  
Human effigy water bottle, N. D., 25SG.

## SG1786 Continued

- VII. Not in structure B. >20 C. 1785.
- VIII. 15 inches below the surface.
- IX. Bones almost completely gone; no bones recovered.
- X. In figure V-7.

- I. SG1809. III. Adult. IV. N. D.
- V. A. Single B. N. D. C. Extended D. On back  
E. N. D. F. -- G. N. D.
- VI. None.
- VII. N. D.
- VIII. 46 inches below the surface.
- IX. No bones recovered. Skeleton "5'2" tall".
- X. Not on field map.

- I. SG1810. III. Adult. IV. N. D.
- V. A. Single B. Disturbed C. -- D. --  
E. N. D. F. -- G. --.
- VI. None.
- VII. A. Not in structure B. 2 C. 1730.
- VIII. 46 inches below the surface.
- IX. No bones recovered.
- X. Aboriginal disturbance. In figure V-7.

I. SG1811. III. Infant. IV. N. D.  
 V. A. Single B. Disturbed C. -- D. --  
 E. N. D. F. -- G. --.  
 VI. None.  
 VII. N. D.  
 VIII. 30 inches below the surface.  
 IX. No bones recovered.  
 X. Not on field map.

I. SG1812. III. Adult. IV. N. D.  
 V. A. Single B. Disturbed C. -- D. --  
 E. N. D. F. -- G. --.  
 VI. None.  
 VII. N. D.  
 VIII. 36 inches below the surface.  
 IX. No bones recovered.  
 X. Aboriginal disturbance. Not on field map.

I. SG1813. III. Child. IV. N. D.  
 V. A. Single B. N. D. C. Extended D. On back  
 E. N. D. F. -- G. N. D.  
 VI. None.  
 VII. N. D.

## SG1813 Continued

VIII. 30 inches below the surface.

IX. No bones recovered.

X. Not on field map.

I. SG1814, III. Child. IV. N. D.

V. A. Single B. N. D. C. Extended D. On back

E. N. D. F. -- G. N. D.

VI. None.

VII. N. D.

VIII. 30 inches below the surface.

IX. No bones recovered.

X. Not on field map.

I. SG1815, III. Adult. IV. N. D.

V. A. Single B. N. D. C. Extended D. On back

E. N. D. F. -- G. N. D.

VI. None.

VII. N. D.

VIII. 28 inches below the surface.

IX. No bones recovered. Skeleton "6' tall."

X. Not on field map.



I. SG1816. III. Adult. IV. N. D.  
 V. A. Single B. N. D. C. Extended D. On back  
 E. N. D. F. -- G. N. D.  
 VI. None.  
 VII. N. D.  
 VIII. 24 inches below the surface.  
 IX. No bones recovered. Skeleton 5 feet 2 inches tall.  
 X. Not on field map.

I. SG1817. III. Adult. IV. N. D.  
 V. A. Single B. N. D. C. Extended D. On back  
 E. N. D. F. -- G. N. D.  
 VI. None.  
 VII. N. D.  
 VIII. 24 inches below the surface.  
 IX. "Bones too rotten to remove".  
 X. Not on field map.

I. SG1877. III. Adult. IV. N. D.  
 V. A. Single B. Disturbed C. -- D. --  
 E. N. D. F. -- G. --.  
 VI. None.  
 VII., A. Probably not in structure B. 4 C. 1878.

## SG1877 Continued

VIII. 20 inches below the surface. "Only below the knees remaining - Rest dug away although no recent pit is evident."

IX. No bones recovered.

X. In figure V-7.

I. SG1878. III. Adult. IV. N. D.

V. A. Single B. Disturbed C. -- D. --

E. N. D. F. -- G. --.

VI. None.

VII. A. Probably not in structure B. 2 C. 1878.

VIII. 20 inches below the surface. "Only below knees remaining - Rest of body dug away, but no evidence of any recent digging."

IX. No bones recovered.

X. In figure V-7.

I. SG1879. III. Adult. IV. N. D.

V. A. Single, may be multiple with 1880. B. N. D.

C. Extended D. On back E. N. D. F. --

G. SE-NW.

VI. None.

VII. A. Not in structure B. 16 C. 1880.

## SG1879 Continued

VIII. 30 inches below the surface.

IX. "Bones rotten." No bones recovered.

X. In figure V-7.

I. SG1880. III. Adult. IV. N. D.

V. A. Single, may be multiple with 1879 B. N. D.

C. Extended D. On back E. N. D. F. --

G. NW-SE.

VI. None.

VII. A. Not in structure B. 14 C. 1879.

VIII. 30 inches below the surface.

IX. Little of skeleton left; no bones recovered.

X. In figure V-7.

I. SG1881. III. Child. IV. N. D.

V. A. Single, may be multiple with 1882 B. N. D.

C. Extended D. On back E. N. D. F. -- G. N.D.

VI. None.

VII. A. Not in structure B. 1 C. 1881.

VIII. 12 inches below the surface.

IX. "Only crowns of teeth remaining to show position of skull." No bones recovered.

## SG1881 Continued

X. In figure V-7.

I. SG1882. III. Child. IV. N. D.

V. A. Single, may be multiple with 1881. B. N. D.

C. Extended D. On back E. N. D. F. --

G. N. D.

VI. None.

VII. A. Not in structure B. 1 C. 1881.

VIII. 12 inches below the surface.

IX. "Only large leg bones to show position of body."  
No bones recovered.

X. In figure V-7.

I. SG1883. III. Infant. IV. N. D.

V. A. Single B. Disturbed C. -- D. -- E. N. D.

F. -- G. --.

VI. None.

VII. A. In structure B. >1 C. 1871.

VIII. 18 inches below the surface.

IX. "May have been disturbed by the building of the  
firebasin - Right arm a few ribs in last stages of  
decay, all that we found." No bones recovered.

X. In figure V-7.

- I. SGI884. III. Adult. IV. N. D.
- V. A. Single B. N. D. C. Extended D. On back  
E. In pit F. -- G. NNE-SSW.
- VI. None.
- VII. A. Not in structure B. 13 C. 1786.
- VIII. 12 inches below the surface. In "indefinite pit  
from surface."
- IX. Crushed skull recovered.
- X. In figure V-7.

Excavation Southwest of Mound G.

The archaeological features recovered from the excavation southwest of Mound G included 73 burials, several in situ artifacts, a long wall segment, several structures, one "basin," and one firebasin. Most of the features, a few burials excepted, are shown in figure V-7.

The major feature recovered southwest of Mound G was the long wall trench segment. This wall trench, which ran the entire length of the excavation, varied in width from 12 to 18 inches, and extended "24 inches into the subsoil." The southern end of the wall appears to terminate in an area of soil stains here designated structure S-1; the northern terminus of the wall was not recovered. This wall, like the wall found during the excavation west of Mound P, (see Chapter VI) presumably served to screen the main plaza area from the "village" area. However, unlike the excavated portions of the wall segment west of Mound P, this wall segment had a complex series of structures associated with it.

The southern end of the long wall blends into a series of wide soil stains (floor and wall trenches?) which define structure S-1. The width of the stains which outline structure S-1 vary from 2 feet to 6 feet. The central area defined by the stains measures 8 feet by 12 feet. A basin

3.8 feet in diameter (the excavators did not label it a firebasin) was located on the southern margin of the central area. The burials associated with structure S-1 are associated only with the areas of stained soil. The location and orientation of these burials strongly suggests that the majority of the stained area was a floor; the variable depths of the burials suggests that they were buried through the floor rather than on it. It will take judicious re-excavation to sort out the exact relationship between the floor and walls of structure S-1. The major question which any re-excavation should ask is, was structure S-1 only an area of prepared floor or was it a walled in area?

In addition to the burials and their associations several in situ artifacts were recorded as associated with structure S-1. A piece of limestone (36SWG) and a small stone discoidal (54SWG) were found on the stained area of S-1. A pottery discoidal (38SWG) was found in the center of S-1.

Structure S-2 was a three room building just to the east of the long wall. The three rooms have been designated S-2a, S-2b and S-2c. The long wall serves as the westernmost wall of rooms S-2b and S-2c. The north wall of room S-2c is connected to the long wall. Room S-2a has as its western wall the eastern wall of rooms

S-2b and S-2c. The interlocking and sharing of these walls establishes the contemporaneity of all segments of the structure. Reference to figure V-7 will give the reader a visual representation of the relationship between the rooms.

Room S-2a, part of which is within the excavation designated south of Mound G, was the easternmost room of structure S-2. A series of paired parallel wall trenches to the north, east and south, and a single wall common to rooms S-2b and S-2c to the west, serve to outline this room. The interior measurements of S-2a were 20 feet (north-south) by 16.5 feet (east-west); the interior floor space of room S-2a was approximately 330 square feet. A single burial (SWG1762) and a few large, scattered post molds were the only features interior to room S-2a.

Room S-2b, which was partitioned from room S-2c by a 10 foot long wall trench, had an entrance facing southward onto structure S-1. The interior measurements of room S-2b (if its southern and northern walls are extended to the long wall) were 19.3 feet (east-west) by 15.3 feet (north-south); the floor space of room S-2b was approximately 295 square feet. Features interior to room S-2b included a firebasin 18 inches in diameter and five burials. Two of the burials, SWG1780 and SWG1781, were clearly associated with room S-2b. Burials SWG1754 to



SWG1756 are, by virtue of their shallow depth and their position through the long wall trench, clearly intrusive and subsequent to room S-2b. A mass of red paint (37SWG) was found in the southeast corner of room S-2b.

Room S-2c, like room S-2b, has the long wall segment as its common west wall. It has an entrance into room S-2b, and an exterior entrance in its northeast corner. The interior dimensions of room S-2c were 20.5 feet (east-west) by 15.5 feet (north-south); the floor space of S-2c was approximately 318 square feet. The floor space of all the rooms of structure S-2 was approximately 900 square feet. These dimensions make structure S-2 one of the largest structures yet found at Moundville.

Structure S-3, like structure S-2, has the long wall as its western wall. Structure S-3 may have been partially open on its north side and it also seems to have had an entryway via a narrow corridor between it and structure S-2. There also appears to have been an entryway in the southeast corner of structure S-3. If the north and south walls of the structure are extended to meet the long wall, structure S-3 would measure 18.5 feet (east-west) by 13 feet (north-south); these dimensions would yield a floor area of approximately 240 square feet. Features interior to structure S-3 were limited to a few large scattered post molds and two in situ artifacts. Two fragments of

a large water bottle (27SWG) were found on the floor of S-3; a clay pipe (28SWG) was found in the bottom of a post mold. The location of both artifacts is shown in figure V-7. Of the three burials spatially associated with structure S-3 only one may have been actually associated with the structure. Burials SWG1758 and SWG1760 clearly postdate structure S-3. The position of burial SWG1759 is less clear. This burial may have been disturbed by the construction of S-3 and therefore may predate the structure.

Structure S-4 almost defies description. This structure is just to the east of structure S-3 and the space between the two seems to form a corridor. The rooms of structure S-4 (if rooms is an accurate term) were a pair of rectangles open to the south. The western room measured 3 feet (east-west) by 6 feet (north-south); the central area, which is the eastern room, measured 5 feet (east-west) by 12 feet (north-south). Burials SWG1761 and SWG1757 were associated with the western room. A few post molds were the only features associated with the central area. Burial SWG1766 was found on the east side of structure S-4 and may have been associated with the structure.

The area immediately to the northeast of structure S-4 was not recorded on the field map. The excavators had tested the 20 feet by 20 feet area which lies between

burial SWG1759 and the long wall before mapping of the site commenced. Burials for which there are descriptions in the field notes but no notations on the field map probably come from this area.

Features recorded to the south of structure S-4 included several large post molds, one burial, an in situ artifact, and a small wall trench segment. The clustered pattern of the large post molds between structures S-2, S-3 and S-4 seems to tie these three buildings into a single complex. Burial SWG1765 predates the small wall trench, which cuts through it, and it may predate the structural complex as a whole. The single in situ artifact found between structure S-2, S-3 and S-4 was a smooth stone to which "paint" had adhered (33SWG). This stone was found in the fill of the small wall trench segment.

The areas immediately to the east of structure S-4 were not recorded completely. Like a few other areas in the site this area was excavated prior to mapping the site. If structure S-4 extended eastward it, like the northeast corner of structure S-2, was not recorded.

The remaining class of features to be described for the excavation southwest of Mound G is the burials. All of the 73 burials recovered from this area are described

below. When these burials also appear in figure V-7, this fact will be noted in the description.

Excavation Southwest of Mound G  
Burials 1715-1729, 1738-1762, 1765-1768,  
1771, 1773, 1775, 1780-1784, 1787-1807.  
Guide to burial descriptions.

N. D. = No data; -- = not applicable

- I. Site designation and burial number (i. e. SGL700).
- II. Not Used.
- III. Age.
- IV. Sex (if given on C. E. Snow's burial cards).
- V. Form of burial:
  - A. Single - or multiple (if multiple numbers of associated burials given).
  - B. Articulated, partially articulated, bundle, disturbed, skull only.
  - C. Extended, partially flexed, fully flexed.
  - D. On back, on left side, on right side, on face.
  - E. In pit, no pit.
  - F. Dimensions of pit.
  - G. Orientation (head-feet). Directions enclosed in parentheses (E-W) or E-(W) indicate an uncertainty in one or both directions.
- VI. Internal associations and locations with field specimen numbers: e. g. Pot, right shoulder, 100SWG.
- VII. External Associations:
  - A. In structure, not in structure.

B. Nearest firebasin, in feet.

C. Nearest neighbor burial number.

VIII. Stratigraphic and other associations.

IX. Bones recovered, skeletal condition.

X. Remarks.

I. SWG1715. III. Adult. IV. N. D.

V. A. Single B. N. D. C. Extended D. On back

E. N. D. F. -- G. N. D.

VI. None.

VII. N. D.

VIII. 18 inches below the surface.

IX. A few bones recovered. Skeleton 5 feet 2 inches tall.

X. Not on field map.

I. SWG1716. III. Adult. IV. N. D.

V. A. Multiple, with 1717 B. N. D. C. Extended

D. On back E. N. D. F. -- G. N. D.

VI. Discoidal, at hand, 11SWG.  
Shells, N. D., 12SWG.

VII. N. D.

VIII. 18 inches below the surface.

IX. Most of skeleton recovered. Skeleton 5 feet 2 inches.

## SWG1716 Continued

X. "Immediately at right shoulder is SWG1717." Not on field map.

I. SWG1717. III. Child. IV. N. D.

V. A. Multiple with 1716 B. N. D. C. Extended  
D. On back E. N. D. F. -- G. N. D.

VI. Small pot, on left foot, 1SWG.  
Bowl, between knees, 2SWG.  
Deep incised bowl, N. D., 3SWG.  
Pot (4 handles), N. D., 4SWG.  
Pot (4 handles), N. D., 5SWG.

VII. N. D.

VIII. 18 inches below the surface.

IX. Only lower jaw recovered.

X. Not on field map.

I. SWG1718. III. N. D. IV. N. D.

V. A. Single B. Disturbed C. -- D. --  
E. N. D. F. -- G. --.

VI. Plain water bottle, where skull should have been,  
6SWG.  
Crushed pot, over right foot, 7SWG.

VII. N. D.

VIII. Aboriginal disturbance.

IX. No bones recovered.

## SWG1718 Continued

X. Not on field map.

I. SWG1719. III. Child. IV. N. D.

V. A. Single B. N. D. C. Extended D. On back  
E. N. D. F. -- G. N. D.

VI. None.

VII. N. D.

VIII. 24 inches below the surface.

IX. No bones recovered. Skeleton 2 feet 4 inches tall.

X. Not on field map.

I. SWG1720. III. Child. IV. N. D.

V. A. Single B. Disturbed C. Extended D. On  
back E. N. D. F. -- G. N. D.

VI. Bowl, at left of skull, 8SWG.

VII. N. D.

VIII. 24 inches below the surface.

IX. No bones recovered. "Skeleton cut away at hips."

X. Not on field map.

I. SWG1721. III. Child. IV. N. D.  
V. A. Single B. N. D. C. Extended D. On back  
E. N. D. F. -- G. N. D.  
VI. None.  
VII. N. D.  
VIII. 24 inches below the surface.  
IX. Most of skeleton saved. Skeleton 3 feet 4 inches tall.  
X. Not on field map.

I. SWG1722. III. Child. IV. N. D.  
V. A. Single B. N. D. C. Extended D. On back  
E. N. D. F. -- G. N. D.  
VI. None.  
VII. N. D.  
VIII. 24 inches below the surface.  
IX. "Bones in very bad shape - some saved." Skeleton  
3 feet 4 inches tall.  
X. Not on field map.

I. SWG1723. III. Adult. IV. N. D.  
V. A. Multiple, with 1724 B. N. D. C. Extended  
D. On back E. N. D. F. -- G. N. D.  
VI. None.



## SWG1723 Continued

VII. N. D.

VIII. 24 inches below the surface.

IX. A few bone fragments recovered. Skeleton 5 feet 2 inches tall.

X. Not on field map.

I. SWG1724. III. Child. IV. N. D.

V. A. Multiple, with 1723 B. N. D. C. Extended  
D. On back E. N. D. F. -- G. N. D.

VI. None.

VIII. N. D.

IX. Only a few skull fragments recovered.

X. At left arm of burial 1723. Not on field map.

I. SWG1725. III. Adult, 22 years. IV. Female.

V. A. Single B. Disturbed C. -- D. --  
E. N. D. F. -- G. --.

VI. Large fragments of a bowl, N. D., 9SWG.  
Fragments of a bowl plus effigy human head, N. D., 10SWG.

VII. N. D.

VIII. 30 inches below the surface.

IX. A few bones recovered.

X. Not on field map.

- I. SWG1726. III. Adult. IV. N. D.  
 V. A. Single B. N. D. C. Extended D. On back  
 E. N. D. F. -- G. N. D.  
 VI. None.  
 VII. N. D.  
 VIII. 24 inches below the surface.  
 IX. A very few rotten bone fragments recovered.  
 X. Not on field map.

- I. SWG1727. III. Adult. IV. N. D.  
 V. A. Single B. N. D. C. Extended D. On back  
 E. N. D. F. -- G. N. D.  
 VI. Ornament (sheet of copper molded around a six-inch segment of rib bone), in front of chin, 13SWG.  
 Shell beads, under 13SWG, 15SWG.  
 Mass of green paint, at left hand, 14SWG.  
 VII. N. D.  
 VIII. 24 inches below the surface.  
 IX. No bones recovered.  
 X. Not on field map.

- I. SWG1728. III. Adolescent. IV. N. D.  
 V. A. Multiple, with 1729 B. N. D. C. Extended  
 D. On back E. In pit F. N. D. G. N. D.

## SWG1728 Continued

- VI. Water bottle, in back of skull, 16SWG.  
Vessel fragment, at right hand, 17SWG.  
Mass of red paint, at left knee, 18SWG.
- VII. N. D.
- VIII. 42 inches below the surface; pit extends 30 inches  
into yellow sub-soil.
- IX. Several bones recovered.
- X. Not on field map.

- I. SWG1729. III. Child. IV. N. D.
- V. A. Multiple, with 1728 B. N. D. C. Extended  
D. On back E. In pit F. N. D. G. N. D.
- VI. Shells, at left hand, 19SWG.
- VII. N. D.
- VIII. 42 inches below the surface; by side of 1728.
- IX. A few bones recovered.
- X. Not on field map.

- I. SWG1738. III. Adult. IV. N. D.
- V. A. Single B. Disturbed C. Extended D. On  
back E. N. D. F. -- G. N. D.
- VI. None.
- VII. A. Not in structure B. >20 C. 1742.

## SWG1738 Continued

VIII. 6 inches to 18 inches below the surface; badly disturbed by plow.

IX. Pieces of shattered skull recovered.

X. In figure V-7.

I. SWG1739. III. N. D. IV. N. D.

V. A. Single B. Disturbed C. -- D. --

E. N. D. F. -- G. (NE-SW).

VI. None.

VII. A. Not in structure B. >20 C. 1749.

VIII. 6 inches below the surface; plowed through.

IX. No bones recovered.

X. In figure V-7.

I. SWG1740. III. Adult. IV. Female.

V. A. Multiple, with 1741 B. Disturbed C. Extended

D. On back E. N. D. F. -- G. NE-SW.

VI. None.

VII. A. Not in structure B. >20 C. 1741.

VIII. 24 inches below the surface. Large post hold had cut away left arm of 1740. 1741 buried on right forearm of 1740.

IX. Most of skeleton recovered.

X. In figure V-7.

- I. SWG1741. III. Infant. IV. N. D.  
V. A. Multiple, with 1740 B. N. D. C. Extended  
D. On back E. N. D. F. -- G. NE-SW.  
VI. None.  
VII. A. Not in structure B. >20 C. 1740.  
VIII. 24 inches below the surface.  
IX. A few bones recovered.  
X. In figure V-7.

- I. SWG1742. III. Adult. IV. N. D.  
V. A. Single B. Skull only C. -- D. --  
E. N. D. F. -- G. --.  
VI. None.  
VII. A. Not in structure B. >20 C. 1738.  
VIII. 30 inches below the surface.  
IX. No skeletal material recovered.  
X. In figure V-7.

- I. SWG1743. III. Child. IV. N. D.  
V. A. Single B. N. D. C. Extended D. On back  
E. N. D. F. -- G. NNE-SSW.  
VI. None.  
VII. A. Not in structure B. >20 C. 1744.

## SWG1743 Continued

VIII. 10 inches below the surface.

IX. Most of skeleton recovered.

X. In figure V-7.

I. SWG1744. III. N. D. IV. N. D.

V. A. Single B. Disturbed C. Extended D. On back E. N. D. F. -- G. S-(N).

VI. Whetrock, at right hand, 20SWG.

VII. A. Not in structure B. >20 C. 1746.

VIII. 10 inches below the surface.

IX. A few bones recovered.

X. In figure V-7.

I. SWG1745. III. Adult. IV. N. D.

V. A. Single B. N. D. C. Extended D. On back E. N. D. F. -- G. S-N.

VI. None.

VII. A. Not in structure B. >20 C. 1775.

VIII. 12 inches below the surface, disturbed 1775.

IX. No bones recovered.

X. In figure V-7.

- I. SWG1746. III. Adult. IV. N. D.
- V. A. Single B. N. D. C. Extended D. On back  
E. N. D. F. -- G. E-W.
- VI. None.
- VII. A. Not in structure B. >20 C. 1747.
- VIII. 12 inches below the surface.
- IX. No bones recovered.
- X. In figure V-7.

- I. SWG1747. III. N. D. IV. N. D.
- V. A. Single B. Disturbed C. -- D. --  
E. N. D. F. -- G. (ENE-WSW).
- VI. None.
- VII. A. Not in structure B. >20 C. 1746.
- VIII. N. D.
- IX. No bones recovered.
- X. In figure V-7.

- I. SWG1748. III. Adult. IV. N. D.
- V. A. Multiple, with 1749 B. N. D. C. Extended  
D. On back E. N. D. F. -- G. NNE-SSW.
- VI. Water bottle (large), crushed at right knee, 23SWG.
- VII. A. Not in structure B. >20 C. 1749.

## SWG1748 Continued

VIII. 28 inches below the surface.

IX. A few pieces of skull recovered. Skeleton 5 feet 6 inches.

X. In figure V-7.

I. SWG1749. III. N. D. IV. N. D.

V. A. Multiple, with 1748 B. N. D. C. Extended  
D. On back E. N. D. F. -- G. SSW-NNE.

VI. Pot ("4 pairs of protuberances along side"), at feet, 21SWG.  
Shell beads, under chin, 22SWG.

VII. A. Not in structure B. >20 C. 1748.

VIII. 28 inches below the surface. "Head off right hand of 1748."

IX. Skeleton very badly decayed. No bones recovered.

X. In figure V-7.

I. SWG1750. III. Adult. IV. N. D.

V. A. Multiple, with 1751-1753 B. N. D.  
C. Extended D. On back E. N. D. F. --  
G. SSE-NNW.

VI. None.

VII. A. Not in structure B. >20 C. 1753.



## SWG1750 Continued

- VIII. 6 inches below the surface.
- IX. No bones recovered. Skeleton 5 feet 4 inches tall.
- X. In figure V-7.

- I. SWG1751. III. N. D. IV. N. D.
- V. A. Multiple, with 1750, 1752, 1753. B. N. D.  
C. Extended D. On back E. N. D. F. --  
G. N-S.
- VI. Water bottle, to rear of skull, 24SWG.  
Pot, over left elbow, 25SWG.
- VII. A. Not in structure B. >20 C. 1753.
- VIII. 9 inches below the surface.
- IX. Bones rotten, none recovered. Skeleton 4 feet 8 inches tall.
- X. In figure V-7.

- I. SWG1752. III. N. D. IV. N. D.
- V. A. Multiple, with 1750, 1751, 1753 B. Skull  
only C. -- D. -- E. N. D. F. -- G. --.
- VI. None.
- VII. A. Not in structure B. >20 C. 1751.
- VIII. 8 inches below the surface.
- IX. No bone recovered.

- I. SWG1755. III. Adult. IV. N. D.
- V. Multiple, with 1756 B. N. D. C. Extended  
D. On back E. N. D. F. -- G. E-W.
- VI. None.
- VII. A. In structure S-2b C. 13 C. 1756.
- VIII. 15 inches below the surface. "Skull resting  
immediately by side of 1754."
- IX. Most of skeleton recovered.
- X. In figure V-7.

- I. SWG1756. III. Adult. IV. N. D.
- V. A. Multiple, with 1755 B. N. D. C. Extended  
D. On back E. N. D. F. -- G. ESE-WNW.
- VI. None.
- VII. A. In structure S-2b B. 12 C. 1755.
- VIII. 22 inches below the surface. "Feet underneath legs  
of 1755."
- IX. Most of skeleton recovered.
- X. In figure V-7.

- I. SWG1757. III. Child. IV. N. D.
- V. A. Single B. Disturbed C. -- D. --  
E. N. D. F. -- G. --.
- VI. None.

## SWG1757 Continued

VII. A. In structure S-4 B. > 20 C. 1761.

VIII. 10 inches below the surface.

IX. No bones recovered.

X. In figure V-7.

I. SWG1758 III. Adult. IV. N. D.

V. A. Single B. N. D. C. N. D. D. Face down

E. N. D. F. -- G. N. D.

VI. Large fragment of pot, at left hand, 29SWG.

VII. A. In structure S-3 B. >20 C. 1759.

IX. No bones recovered.

X. In figure V-7.

I. SWG1759. III. Adult. IV. N. D.

V. A. Single B. N. D. C. Extended D. On back

E. N. D. F. -- G. N. D.

VI. Snail shells, between knees, 30SWG.  
Mussel shells, N. D., 31SWG.

VII. A. Not in structure B. >20 C. 1760.

VIII. 22 inches below the surface.

IX. Entire skeleton recovered.

X. In figure V-7.

- I. SWG1760. III. Adult. IV. N. D.
- V. A. Single B. N. D. C. Extended D. On back  
E. N. D. F. -- G. N-S.
- VI. None.
- VII. A. Not in structure B. >20 C. 1759.
- VIII. 10 inches below the surface. Cuts into wall trench of S-3.
- IX. No bones recovered. Skeleton 5 feet 3 inches.
- X. In figure V-7.

- I. SWG1761. III. Child. IV. N. D.
- V. A. Single B. N. D. C. Extended D. On back  
E. N. D. F. -- G. NNE-SSW.
- VI. None.
- VII. A. In structure S-4 B. >20 C. 1757.
- VIII. 18 inches below the surface.
- IX. No bones recovered.
- X. In figure V-7.

- I. SWG1762. III. Adult. IV. N. D.
- V. A. Single B. N. D. C. Fully flexed. D. On right side  
E. N. D. F. -- G. S-(N).
- VI. None.
- VII. A. In structure S-2a B. 7 C. 1781.

## SWG1762 Continued

VIII. 24 inches below the surface.

IX. "Bones very rotten - even crowns of teeth pulverized when touched." No bones recovered.

X. In figure V-7.

I. SWG1765. III. Child. IV. N. D.

V. A. Single B. Disturbed C. Extended D. On back E. N. D. F. -- G. S-N.

VI. Large smooth stone with paint on inverted side, under left side of skull, 33SWG.  
Tulotoma magnifica, at right shoulder, 32SWG.

VII. A. Not in structure B. >20 C. 1766.

VIII. 24 inches below the surface. "Post hole cut away right side of body."

IX. A part of the skeleton recovered. Skeleton 3 feet tall.

X. In figure V-7.

I. SWG1766. III. Adult. IV. N. D.

V. A. Single B. N. D. C. Partially flexed D. On back E. N. D. F. -- G. S-N.

VI. Small bone object ("partially finished"), N. D., 34SWG.  
Partially finished piece of wood, N. D., 35SWG.

VII. A. Not in structure B. >20 C. 1765.

## SWG1766 Continued

VIII. 30 inches below the surface.

IX. Part of skeleton recovered.

X. "Feet drawn back to hips." In figure V-7.

I. SWG1767. III. Adult. IV. N. D.

V. A. Multiple, with 1768 B. N. D. C. Extended  
D. On back E. N. D. F. -- G. SW-NE.

VI. None.

VII. A. Not in structure B. >20 C. 1768.

VIII. 15 feet below the surface. Skeleton cuts across wall trench.

IX. No bones recovered.

X. In figure V-7.

I. SWG1768. III. Adult. IV. N. D.

V. A. Multiple, with 1769 B. N. D. C. Extended  
D. On back E. N. D. F. -- G. SW-NE.

VI. None.

VII. A. Not in structure B. >20 C. 1767.

VIII. 15 inches below the surface. Skeleton cuts into a wall trench.

IX. No bones recovered.

X. In figure V-7.

- I. SWG1771. III. N. D. IV. N. D.
- V. A. Single B. N. D. C. Extended D. On back  
E. N. D. F. -- G. N-S.
- VI. None.
- VII. A. Not in structure B. >20 C. 1767.
- VIII. 30 inches below the surface.
- IX. "All bones entirely decayed away except hips and  
lines in the soil where leg bones had been." No  
bones recovered.
- X. In figure V-7.

- I. SWG1773. III. Adolescent. IV. N. D.
- V. A. Single B. N. D. C. Extended D. On back  
E. N. D. F. -- G. SSW-NNE.
- VI. None.
- VII. A. Not in structure B. 18 C. 1746.
- VIII. 22 inches below the surface.
- IX. "Bones almost gone." No bones recovered.
- X. In figure V-7.

- I. SWG1775. III. Adolescent. IV. N. D.
- V. A. Single B. Disturbed C. Extended D. On  
back E. N. D. F. -- G. N. D.

## SWG1775 Continued

- VI. None.
- VII. A. Not in structure B. >20 C. 1745.
- VIII. 28 inches below the surface. Disturbed from hips to skull by 1745.
- IX. No bones recovered.
- X. In figure V-7.

- I. SWG1780. III. Adult. IV. N. D.
- V. A. Single B. Disturbed C. -- D. --  
E. N. D. F. -- G. --.
- VI. None.
- VII. A. In structure S-2b B. 6 C. 1781.
- VIII. 6 inches below the surface.
- IX. Bones rotten; no bones recovered.
- X. In figure V-7. Aboriginal disturbance.

- I. SWG1781. III. Child. IV. N. D.
- V. A. Single B. N. D. C. Extended D. On back  
E. N. D. F. -- G. N-S.
- VI. None.
- VII. A. In structure S-2b B. 5 C. 1780.
- VIII. 35 inches below surface; 24 inches into sub soil.



## SWG1781 Continued

IX. A few bone fragments recovered.

X. In figure V-7.

I. SWG1782. III. Adolescent. IV. N. D.

V. A. Single B. N. D. C. Extended D. On back

E. N. D. F. -- G. W-E.

VI. None.

VII. A. In structure S-1 B. 8 C. 1783.

VIII. 36 inches below the surface; knees resting on disturbed skeleton 1783.

IX. Crushed skull recovered.

X. In figure V-7.

I. SWG1783. III. Adolescent. IV. N. D.

V. A. Single B. Disturbed C. -- D. --

E. N. D. F. -- G. --.

VI. Stone "ceremonial" axe, thrown out of pit 1783 when 1782 interred, 39SWG.

VII. A. In structure S-1 B. 9 C. 1782.

VIII. 37 inches below the surface.

IX. No bones recovered.

X. In figure V-7.

- I. SWG1784. III. Adult. IV. N. D.
- V. A..Single B. N. D. C. Extended D. On back  
E. N. D. F. -- G. E-W.
- VI. Pot, right rear of skull, 40SWG.  
Vessel fragment, rear of skull, 41SWG.
- VII. A. In structure S-1 B. 5 C. 1797.
- VIII. 28 inches below the surface.
- IX. No bones recovered.
- X. In figure V-7.

- I. SWG1787. III. Adolescent. IV. N. D.
- V. A. Multiple, with 1788, 1789 B. N. D.  
C. Extended D. On back E. N. D. F. --  
G. S-N.
- VI. None.
- VII. A. In structure S-1 B. 3 C. 1789.
- VIII. 15 inches below the surface.
- IX. "Bones quite rotten." No bones recovered. Skeleton  
"55" tall."
- X. In figure V-7.

- I. SWG1788. III. Adult. IV. N. D.
- V. A. Multiple, with 1787, 1789 B. N. D.  
C. Extended D. On back E. N. D. F. --

## SWG1788 Continued

G. N-S.

VI. Water bottle, right side of skull, 63SWG.  
Pottery fragments, rear of skull, 64SWG.  
Projectile points, near hips, 65SWG.

VII. A. In structure S-1 B. 4 C. 1789.

VIII. 20 inches below the surface.

IX. No bones recovered.

X. In figure V-7.

I. SWG1789. III. Adult. IV. N. D.

V. A. Multiple, with 1787, 1788 B. N. D.

C. Extended D. On back E. N. D. F. --

G. N-S.

VI. Shell beads, at chin, 59SWG.  
Fragment of axe, under right shoulder, 60SWG.  
Discoidal, at left shoulder, 61SWG.  
Water bottle (crushed) at back of skull, 62SWG.

VII. A. In structure S-1 B. 5 C. 1789.

VIII. N. D.

IX. No bones recovered.

X. In figure V-7.

I. SWG1790. III. Infant. IV. N. D.

V. A. Single B. N. D. C. Extended D. On back

## SWG1790 Continued

E. N. D. F. -- G. WNW-ESE.

VI. None.

VII. A. In structure S-1 B. 7 C. 1800.

VIII. 30 inches below the surface.

IX. "Bones very rotten. Skull paper thin." No bones recovered.

X. In figure V-7.

I. SWG1791. III. N. D. IV. N. D.

V. A. Single B. N. D. C. Extended D. On back

E. N. D. F. -- G. N-S.

VI. Pot, N. D., 44SWG.

VII. A. In structure S-1 B. 4 C. 1795.

VIII. 18 inches below the surface.

IX. "Bones quite rotten." A few fragments recovered.

X. In figure V-7.

I. SWG1792. III. Young Child. IV. N. D.

V. A. Single B. Disturbed C. -- D. -- E. N. D.

F. -- G. --.

VI. None.

VII. A. In structure S-1 B. 3 C. 1790.

## SWG1792 Continued

VIII. 15 inches below the surface.

IX. "Bones very rotten." No bones recovered.

X. In figure V-7.

I. SWG1793. III. Adult. IV. N. D.

V. A. Single B. Disturbed C. Extended D. On  
back E. N. D. F. -- G. E-W.

VI. Pottery fragments, right rear of skull, 42SWG.  
Pottery fragment, left of skull, 43SWG.

VII. A. In structure S-1 B. 5 C. 1804.

VIII. 20 inches below the surface.

IX. A few bone fragments recovered.

X. In figure V-7.

I. SWG1794. III. Infant. IV. N. D.

V. A. Single B. Disturbed C. -- D. --  
E. N. D. F. -- G. --.

VI. None.

VII. A. In structure S-1 B. 7 C. 1795.

VIII. 15 inches below the surface.

IX. "Bones rotten and scattered." No bones recovered.

X. In figure V-7.

- I. SWG1795. III. Adolescent. IV. N. D.
- V. A. Single B. N. D. C. Extended D. On back  
E. N. D. F. -- G. W-E.
- VI. Bowl, by right foot, 45SWG.
- VII. A. In structure S-1 B. 6 C. 1794.
- VIII. 26 inches to 36 inches below the surface.
- IX. No bones recovered. Skeleton was 4 feet 3 inches tall.
- X. In figure V-7.

- I. SWG1796. III. Child. IV. N. D.
- V. A. Single B. Skull only C. -- D. -- E. N. D.  
F. -- G. --.
- VI. None.
- VII. A. In structure S-1 B. 7 C. 1794.
- VIII. 14 inches below the surface. Aboriginal disturbance.
- IX. No bones recovered.
- X. In figure V-7.

- I. SWG1797. III. Adult. IV. N. D.
- V. A. Single B. N. D. C. Partially flexed D. On  
back E. N. D. F. -- G. NNE-(SSW).
- VI. None.

## SWG1797 Continued

VII. A. Not in structure B. 8 C. 1784.

VIII. 28 inches below the surface.

IX. A crushed skull recovered.

X. In figure V-7.

I. SWG1798. III. Adult. IV. N. D.

V. A. Single B. Skull only C. -- D. --

E. N. D. F. -- G. --.

VI. None.

VII. N. D.

VIII. 53 inches below the surface in corner of garbage pit.

IX. A few fragments recovered.

X. Not on field map.

I. SWG1799. III. Child. IV. N. D.

V. A. Single B. N. D. C. Extended D. On back

E. N. D. F. -- G. N. D.

VI. None.

VII. N. D.

VIII. 24 inches below the surface.

IX. N. D.

## SWG1799 Continued

X. Not on field map.

I. SWG1800. III. Adult. IV. N. D.

V. A. Single B. N. D. C. Extended D. On back

E. N. D. F. -- G. S-N.

VI. Small bowl, N. D., 46SWG.  
Fish effigy bowl, N. D., 47SWG.  
Small water bottle, N. D., 48SWG.  
Water bottle, N. D., 49SWG.  
Paint, at left hand, 50SWG.  
Mica, at right hand, 51SWG.

VII. A. In structure S-1 B. 6 C. 1801.

VIII. 36 inches below the surface. 1800 rested, and disturbed, skeleton 1801.

IX. A few bone fragments recovered.

X. In figure V-7.

I. SWG1801. III. Adult. IV. N. D.

V. A. Single B. Disturbed C. Extended D. On back

E. N. D. F. -- G. N. D.

VI. Water bottle (crushed), N. D., 52SWG.  
Bowl (crushed), N. D., 53SWG.

VII. A. In structure S-1 B. 6 C. 1800.

VIII. 38 inches below the surface. Disturbed by 1800.

IX. No bones recovered.



## SWG1801 Continued

X. In figure V-7.

I. SWG1802. III. Child. IV. N. D.

V. A. Single B. Disturbed C. -- D. --

E. N. D. F. -- G. --.

VI. Small water bottle, N. D., 55SWG.  
Effigy bowl, N. D., 56SWG.  
Fragments of large pot, N. D., 57SWG.

VII. N. D.

VIII. 36 inches below the surface.

IX. No bones recovered.

X. Not on field map.

I. SWG1803. III. N. D. IV. N. D.

V. A. Single B. Disturbed C. -- D. --

E. N. D. F. -- G. N. D.

VI. Duck effigy bowl, N. D., 58SWG.

VII. N. D.

VIII. 42 inches below the surface. Aboriginal disturbance.

IX. No bones recovered.

X. Not on field map.

- I. SWG1804. III. Child. IV. N. D.
- V. A. Single B. Disturbed C. -- D. --  
E. N. D. F. -- G. --.
- VI. None.
- VII. A. In structure S-1 B. 5 C. 1793.
- VIII. 30 inches below the surface. Aboriginal disturbance.
- IX. No bones recovered.
- X. In figure V-7.

- I. SWG1805. III. Adult. IV. N. D.
- V. A. Single B. N. D. C. Extended D. On back  
E. N. D. F. -- G. N. D.
- VI. Bowl ("beaded"), right of skull, 66SWG.  
Bowl ("unusual"), left of skull, 67SWG.
- VII. A. In structure S-1 B. 6 C. 1788.
- VIII. 42 inches below the surface; beneath 1788.
- IX. No bones recovered.
- X. In figure V-7.

- I. SWG1806. III. Adult. IV. N. D.
- V. A. Single B. N. D. C. Extended D. On back  
E. N. D. F. -- G. N. D.
- VI. None.

## SWG1806 Continued

VII. N. D.

VIII. 42 inches below the surface.

IX. No bones recovered.

X. Not on field map.

I. SWG1807. III. Adult. IV. N. D.

V. A. Single B. N. D. C. Extended D. On back

E. N. D. F. -- G. N. D.

VI. None.

VII. N. D.

VIII. 48 inches below the surface.

IX. No bones recovered.

X. Not on field map.

When all factors are considered, including the fact that small areas within the excavation south and southwest of Mound G went unrecorded, this excavation was among the best of the early excavations carried out by the Alabama Museum of Natural History. The systematic recognition and excavation of structural features represented yet another step in the refinement of archaeological techniques at Moundville.

Excavations in the Area of Mound G. C. B. Moore (1905:194; 1907:343).

Clarence B. Moore excavated a portion of Mound G in 1905 and in 1906 he tested the field east of Mound G. Twenty-five trial holes in the Mound yielded nothing (1905:194). Twenty-nine trial holes in the field east of Mound G yielded two burials without artifacts (1907:343).