

## CHAPTER XI

### The Rhodes Site Excavations

During 1935 and early 1936 the Alabama Museum of Natural History conducted two excavations on the 15 acre farm of Oliver Rhodes. This farm was just north of the southern arm of Carthage Branch and shared the Branch as a common boundary with Mound State Monument. Both arms of Carthage Branch and the A. G. and S. R. R. tracks defined the boundaries of the Rhodes Place as a whole. The property lines of the Rhodes farm are outlined in figure XI-1. The base photograph for this figure was an aerial photograph taken by the Alabama National Guard in the mid-1930's. The property lines were shown on a survey map of the property ownership around the Monument.

Of the two excavations undertaken by the Museum on the Rhodes place, only one, the Rhodes Site, could be located with any degree of precision. The location of the second excavation, the Upper Rhodes Site, is, at least for the present, irretrievable. The data in the field maps and notes necessary to locate these sites was minimal. The field maps for both excavations contained no directional information. There were neither north arrows on the field maps nor on the burial sheets nor were there any notations of burial orientations in the notes.

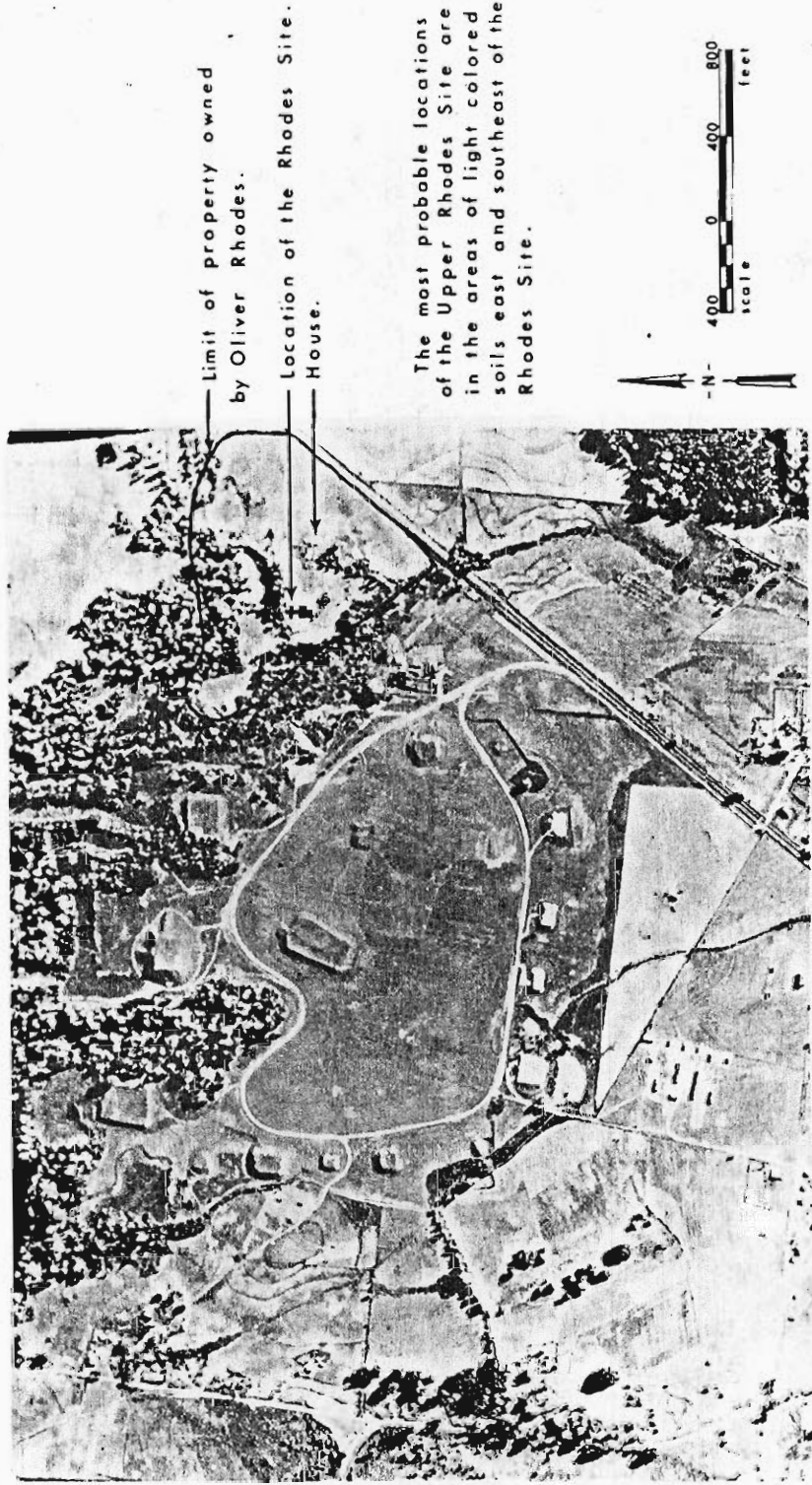


Figure XI-1. The Rhodes Place located on an aerial photograph.

A thicket was noted in the lower left hand corner of the Rhodes Site map, but this thicket no longer exists. Jim Powers' garden fence was given as a datum for the left side of the Upper Rhodes Site excavation. Although a few of the older residents in Moundville remember Jim Powers, no one remembers where he had his garden. The two plum trees and the oak stump which were given as datum points for the Upper Rhodes Site have likewise faded from memory and from the landscape. Topographic notations and a few field photographs were the only remaining locational data for the Rhodes Sites.

For the Upper Rhodes Site the meager clues were not sufficient to place it on the landscape. For the Rhodes Site, however, a highly likely spot has been chosen. Two field photographs provided the orientation and the topographic notes on the field maps provided location.

One of the field photographs (M. S. M. negative #2894) was captioned "NE along long trench." This photograph showed an oblique view along the zero trench. The second photograph (M. S. M. negative #2902) was captioned "Looking NW over work at close of day." The photograph showed an oblique view  $90^{\circ}$  to the left of the first photograph. These two photographs suggest that "up" on the field map was approximately north.

The topographic annotations on the field maps showed the Rhodes Site was on a ridge of land which dropped off to a creek toward the upper end of the excavation. This ridge also came to a point 60 feet to the left of the excavation and dropped off sharply at the lower end of the excavation. (These topographic details are included in figs. XI-2 and XI-3). A small paper cut-out was made of this ridge to the scale of the aerial photograph. The only good fit for this model was in the position it now occupies in figure XI-1. Both the thicket in the lower left hand corner of the excavation and the creek in the upper portion of the excavation show clearly in the photograph and match those features on the site map.

David DeJarnette and I walked the Rhodes farm in October, 1969. His memory of the Rhodes Site excavation confirms the location put forth in figure XI-1. A heavy concentration of pot sherds in this area served as a double-check. Both David DeJarnette and I will continue to search for the location of the Upper Rhodes Site; such a search seems futile, though. The best of the current guesses as to the location of the Upper Rhodes Site are nonetheless given in figure XI-1.

The Rhodes Site

The Alabama Museum of National History excavated the area designated the Rhodes Site between 16 January and 30 January 1936. The area to be excavated was gridded into five by five foot squares. The east-west axis of the coordinate system was numbered in five foot increments, right and left of a center line; the north-south axis was numbered in five foot increments upward from the base of the excavation. Initially a five foot wide trench was excavated from 10 to 180 between 0 and 15. This trench was widened in response to the archaeological features found by the excavators.

Maps of the grid system, areas excavated and, archaeological remains are shown in figures XI-2 and XI-3. Figure XI-2 includes the excavated portions of the site from 0 to 100; figure XI-3 continues from 100 to 180. The stratigraphic profile taken along one wall of the main trench from 50 to 175 is shown on the right hand side of the figures.

The major archaeological feature discovered during the excavation of the Rhodes Site was a large structure in the lower left hand corner of the gridded area. This structure was constructed of three major modules and had

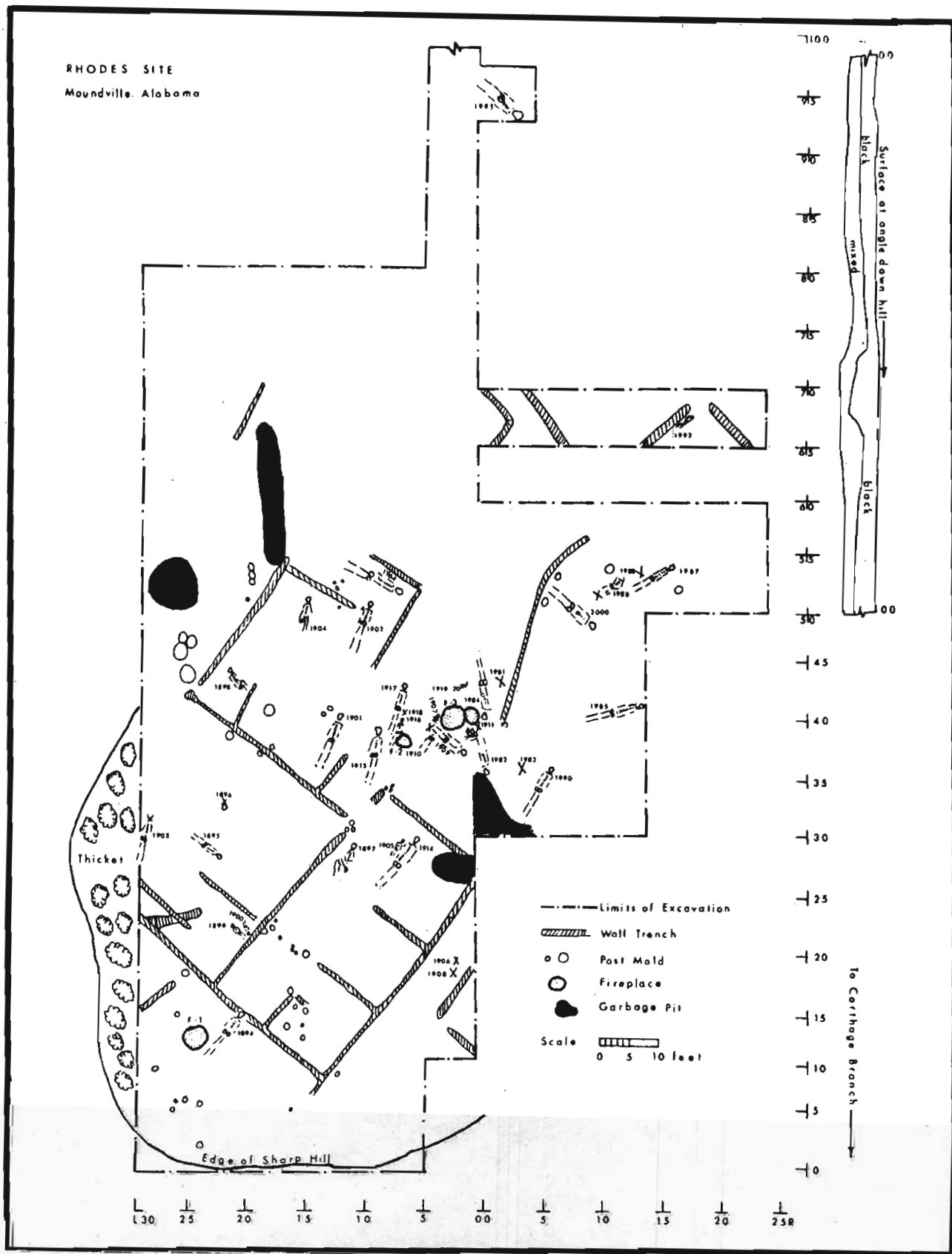


Figure XI-2. Plan of excavation, Rhodes Site.

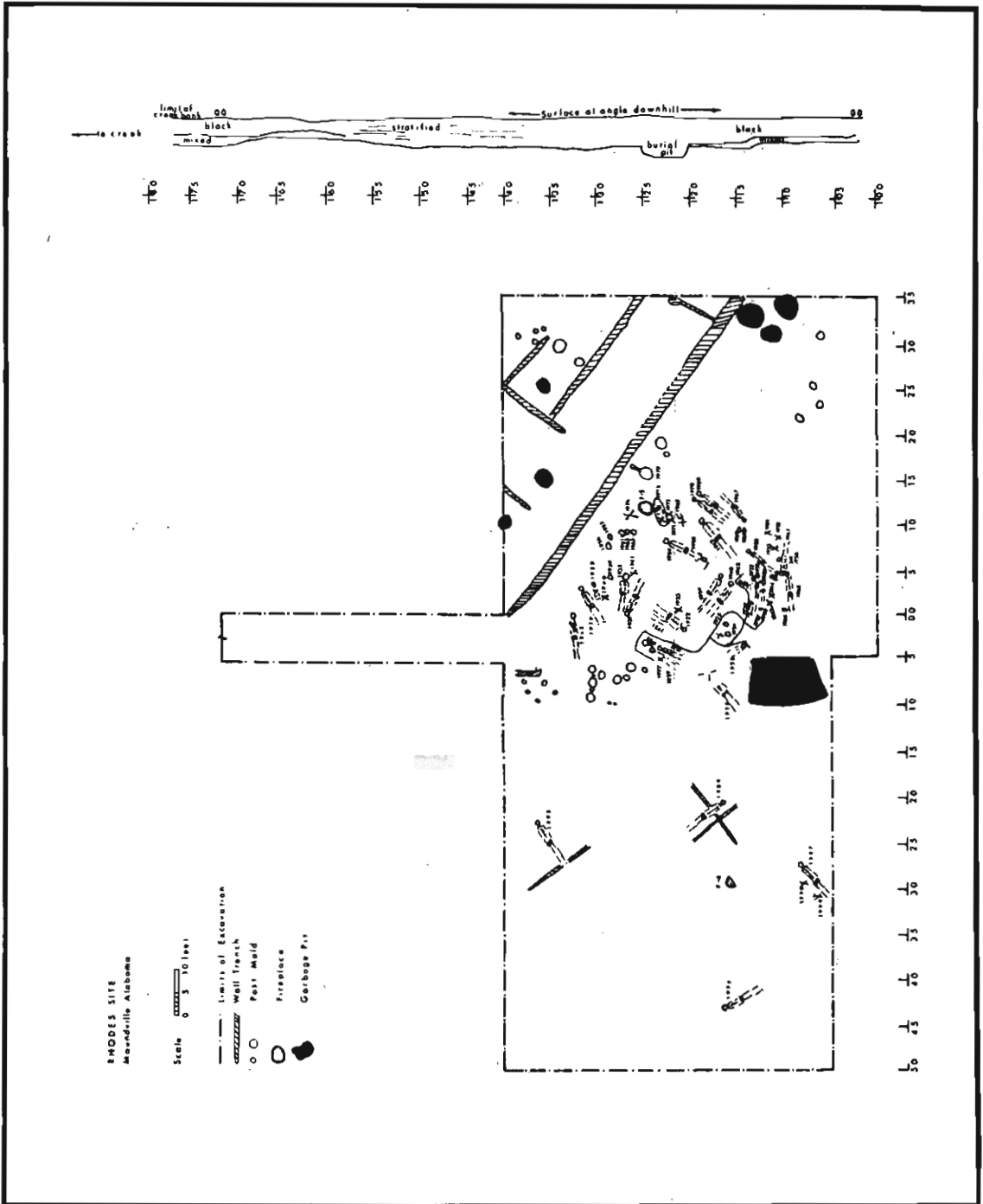


Figure XI-3. Plan of excavation, Rhodes Site.

an enclosed floor area of approximately 700 square feet. The lower right hand module of the structure, which was divided into what seems to have been three rooms and a hall, had interior dimensions of 21.8 feet by 11.8 feet. The lower left module, which seems to have been open on one side, had interior dimensions of 17.2 feet by 16.7 feet. The upper left module, which opened onto a courtyard, had interior dimensions of 13.7 feet by 12.0 feet.

A number of burials were associated with various sections of the structure. However, the most richly accompanied burials were clustered around firebasins F-2 and F-3 in the courtyard of the large structure. The only other features associated with this structure were several garbage pits near the corners of the structure and one firebasin (F-1) just outside the structure in square 10L25.

The second major structural feature found on the Rhodes Site was a long wall trench which ran diagonally across the upper right hand section of the excavation. This wall trench was deeply set and varied in width from 12 to 24 inches. Several slightly smaller wall trenches and a few large post molds were associated with it. It would seem that the excavators found a segment of a



TABLE XI-1

## Firebasins from the Rhodes Site

Number	Square Number		Outside Diameter
F-1	10L25		24
F-2	35L10		30
F-3	40L5	Right	13
		Left	20
F-4	115L30		26
F-5	125R10		38

TABLE XI-2

## Unassociated Artifacts from the Rhodes Site

Artifact Class	Count	Catalogue Numbers (Suffixed by Rho)
POTTERY		
Bowls	2	2, 3.
Water bottles	1	1.
Dishes	2	18, 21.
Miscellaneous effigy parts	3	6, 7, 22.
Miscellaneous vessel parts	3	19, 20, 64.
Discoidals	4	9, 10, 203, 210.
STONE		
Pebble hammers	4	204-207.
Whetstones	9	11-14, 24, 29, 31,
Discoidals		32, 209.
Sandstone	1	30.
Other	2	25, 28.
Stone disc	1	33.
Stone disc fragments	1	26.
Ceremonial axe	1	4.
Stone pendant (in shape of monolithic axe)	1	15.
quartz pestle	1	27.
RAW MATERIALS		
Banded quartz	1	16.
Obsidian	1	23.
Copper fragment	1	17.
BONE		
Awls	2	5, 208.
Unworked deer bone	1	8.

palisade wall complete with bastion (see figure XI-3).

Several richly accompanied multiple burials set in deep pits were found in the center of the section of the Rhodes excavation, shown in figure XI-3. One of these pits, containing burials 1923, 1927, 1928 and 1977 was at least five feet deep. Other features contained in the northern section of the Rhodes Site excavation included two firebasins (F-4 and F-5), a number of garbage pits and two short wall trench segments.

Of the several garbage pits discovered in the Rhodes Site, dimensions were recorded for only three. The round pit in square 50L30 was 48 inches in diameter and 60 inches deep; the long narrow pit near the upper left hand corner of the structure, in squares 50 to 65L20, was 15 feet long and 42 inches deep; the incompletely excavated pit in square 30 0 was 12 inches deep.

The dimensions were taken for all the firebasins discovered during the Rhodes Site excavation. The measurements are presented in Table XI-1.

The Rhodes Site excavation yielded a number of artifacts. These artifacts were number 1Rho through 211Rho. Artifacts for which no associational data were given are listed in Table XI-2. Artifacts which were associated with features other than burials are presented

in Table XI-3. Note that like other areas of the Moundville site artifacts were discovered intentionally placed in the bottom of post holes.

The burials from the Rhodes Site were as richly accompanied as any at Moundville excepting a very few burials from Mounds C and D. Copper ear plugs, though not abundant, were found with several burials; at least two oblong copper gorgets and one small copper axe were found; pottery, shell beads and various mineral paints were abundant. The center of the richly accompanied burials was the area in and around the deep burial pits in square 105 to 130, L5 to R10. Descriptions of all the burials from the Rhodes Site follow below.

TABLE XI-3

In Situ Artifacts from the Rhodes Site

Artifact	Square Number	Depth (Inches)	Association	Catalogue Number (Suffixed by Rho)
Projectile point	14L26	18	On floor near wall trench	43
Pipe	33L22		In firebasin	44
Pot (partially crushed)	27L24	42	(firebasin not recorded)	46
Green paint	29L11	36	In post mold	47
Fragment of greenstone axe	59L4	--	---	63
Pipe	60L10	30	At base of black soil	151
Pot sherd	55L30	--	At base of black soil	152
Charred corn cobs	122R17	30	From deep garbage pit	186
Pottery discoidal	129R11	12	Bottom of post mold	187
Copper object	54R1	12	In black soil	188
Small water bottle	46R4	12	From garbage pit	189
Human effigy bowl	46R4	12	---	189a
Small bowl	46R4	12	---	190

The Rhodes Site  
Burials Rno 1894 to Rno 2000  
Guide to Burial Descriptions

N. D. = No Data; -- = Not Applicable.

- I. Site designation and burial number (i. e., Rno 2000).
- II. Square number.
- III. Age.
- IV. Sex (if given on C. E. Snow's burial cards).
- V. Form of burial:
  - A. Single - or multiple (if multiple numbers of associated burials given).
  - B. Articulated, partially articulated, bundle, disturbed, skull only.
  - C. Extended, partially flexed, fully flexed.
  - D. On back, on right side, on left side, on face.
  - E. In pit, no pit.
  - F. Dimensions of pit.
  - G. Orientation (head-feet). Directions enclosed in parentheses (E-W) or E-(W), indicate an uncertainty in one or both directions.
- VI. Internal associations and locations with field specimen numbers: e. g. Pot, right shoulder, 1Rho.
- VII. External associations:
  - A. In structure, not in structure.
  - B. Nearest firebasin, in feet.
  - C. Nearest neighbor burial number.
- VIII. Stratigraphic and other associations.

IX. Bones recovered; skeletal condition.

X. Remarks.

I. Rh01894. II. 10L25. III. Adult. IV. Male.

V. A. Single B. Articulated C. Extended D. On  
back E. N. D. F. -- G. N. D.

VI. Water bottle (meander design), right side of skull, 34Rho.  
Bowl, left side of skull, 35Rho.  
Large vessel fragment, on chest, 36Rho.

VII. A. Not in structure B. 2 C. 1899.

VIII. Head of burial cut into wall trench. 15 inches below  
the surface.

IX. Most of skeleton recovered.

X. Skeleton recorded as 68 inches tall.

I: Rh01895. II. 25L25. III. Child. IV. N. D.

V. A. Single B. Articulated C. Extended D. On  
back E. N. D. F. -- G. N. D.

VI. Duck effigy bowl, right shoulder, 37Rho.  
Water bottle, N. D., 38Rho.

VII. A. In structure B. 5 C. 1896.

VIII. 12 inches below the surface.

IX. A few bones recovered.

X. Skeleton recorded as 33 inches tall.

- I. Rho1896. II. 30L25. III. Adult. IV. N. D.
- V. A. Single B. Disturbed C. -- D. -- E. N. D.  
F. -- G. N. D.
- VI. Bowl, above skull, 39Rho.  
Pipe, above skull, 40Rho.  
Effigy duck head, above skull, 41Rho.
- VII. A. In structure B. 2 C. 1895.
- VIII. 6 inches below the surface.
- IX. N. D.

- I. Rho1897. II. 25L15. III. Adult. IV. Male.
- V. A. Single B. Articulated C. Fully flexed D. On  
right side E. N. D. F. -- G. N. D.
- VI. None.
- VII. A. In structure B. 10 C. 1914.
- VIII. 36 inches below the surface.
- IX. Most of skeleton recovered.

- I. Rho1898. II. 40L25. III. Adult. IV. N. D.
- V. A. Single B. Articulated C. Partially flexed  
D. On left side E. N. D. F. -- G. N. D.
- VI. None.
- VII. A. In structure B. 13 C. 1904.
- VIII. 36 inches below the surface; in the subsoil.



## Rhol898 Continued

IX. Bones rotten, no bones recovered.

I. Rhol899. II. 20L25. III. Child. IV. N. D.

V. A. Single B. Articulated C. Extended D. On  
back E. N. D. F. -- G. N. D.

VI. 20 tubular shell beads, around neck, 45Rho.

VII. A. In structure B. 10 C. 1900.

VIII. 36 inches below the surface.

IX. Some of skeleton recovered.

I. Rhol900. II. 20L25. III. Child. IV. N. D.

V. A. Single B. Articulated C. Extended D. On  
back E. N. D. F. -- G. N. D.

VI. None.

VII. A. In structure B. 11 C. 1899.

VIII. 36 inches below the surface.

IX. Some of the skeleton recovered.

I. Rhol901. II. 45L15. III. Adult. IV. N. D.

V. A. Single B. Articulated C. Extended D. On

## Rho1901 Continued

back E. N. D. F. -- G. N. D.

- VI. Bowl, back of skull, 48Rho.  
 Large projectile point ("spear head") of flint,  
 right shoulder, 50Rho.  
 3 bone awls, right shoulder, 51-53Rho.  
 Black glaze or coating, right shoulder, 49Rho.  
 Red paint, covering bone awls (51-53Rho), 54Rho.

VII. A. In structure B. 10 C. 1964.

VIII. 36 inches below the surface.

IX. N. D.

X. Skeleton recorded as 65 inches tall.

I. Rho1902. II. 45L15. III. Adult. IV. N. D.

V. A. Single B. Articulated C. Extended D. On  
 back E. N. D. F. -- G. N. D.

VI. None.

VII. A. In structure B. 10 C. 1915.

VIII. 36 inches below the surface.

IX. Most of skeleton recovered.

X. Skeleton recorded as 65 inches tall.

I. Rho1903. II. 25L30. III. N. D. IV. N. D.

V. A. Single B. N. D. C. Extended D. On back

## Rho1903 Continued

- E. N. D. F. -- G. N. D.
- VI. None.
- VII. A. In structure B. 8 C. 1895.
- VIII. 30 inches below the surface.
- IX. No bones recovered.
- X. Skeleton was headless; all other bones were in their proper places.
- 
- I. Rho1904. II. 45L25. III. Adult. IV. N. D.
- V. A. Single b. Articulated C. Partially flexed  
D. On left side E. N. D. F. -- G. N. D.
- VI. Piece of worked jasper, left side of skull, 55Rho.
- VII. A. In structure B. 15 C. 1902.
- VIII. 30 inches below the surface; in subsoil.
- IX. No bones recovered.
- 
- I. Rho1905. II. 45L20. III. Child. IV. N. D.
- V. A. Single B. Skull only C. -- D. --  
E. N. D. F. -- G. N. D.
- VI. 6 bone awls, under skull, 56Rho.
- VII. A. In structure B. 10 C. 1914.
- VIII. 30 inches below the surface. "Aboriginal disturbance, lone skull."

## Rhol905 Continued

IX. No bones recovered.

I. Rhol906. II. 15L5. III. Adult. IV. N. D.

V. A. Single B. Disturbed C. -- D. -- E. N. D.

F. -- G. N. D.

VI. None.

VII. A. Not in structure B. 25 C. 1908.

VIII. 8 inches below the surface.

IX. No bones recovered.

X. "Only ankle and feet bones, present, in [anatomical] order....[also] a single vertebra..."

I. Rhol907. II. 40R5. III. Child. IV. N. D.

V. A. Single B. Disturbed C. -- D. -- E. N. D.

F. -- G. --.

VI. None.

VII. A. In structure B. 0.5 C. 1910.

VIII. 24 inches below the surface.

IX. No bones recovered.

X. Aboriginal disturbance.

I. Rnol908: Empty burial pit. No sign of bones. ..

I. Rhol909. II. 35L5. III. Adult. IV. N. D.

V. A. Single B. Articulated C. Extended D. On  
back E. N. D. F. -- G. N. D.

VI. Bowl (decorated), left rear of skull, 57Rho.  
Pipe, above skull, 58Rho.

VII. A. In structure B. 0.5 C. 1911.

VIII. 30 inches below the surface.

IX. Most of skeleton recovered.

X. Skeleton 1909 disturbed skeletons 1907 and 1910.

I. Rhol910. II. 35L5. III. Adult. IV. N. D.

V. A. Single B. Disturbed C. Extended D. On  
back E. N. D. F. -- G. N. D.

VI. None.

VII. A. In structure B. 0.5 C. 1907.

VIII. 30 inches below the surface.

IX. No skeletal material recovered.

X. Cut off at neck by 1909.

- I. Rho1911. II. 40L5. III. Adult (33). IV. Female.  
 V. A. Multiple B. Bundle C. -- D. -- E. N. D.  
 F. -- G. --.  
 VI. 2 copper ear plugs, under skull, 59Rho.  
 VII. A. In structure B. 0.5 C. 1912.  
 VIII. 42 inches below the surface.  
 IX. Skull shows lamboidal deformation. Skull recovered.  
 X. Bones everywhere, in no particular order, with all three skulls side by side, other bones all in a jumble..."

- I. Rho1912. II. 40L5. III. Adult. IV. N. D.  
 V. A. Multiple, with 1911, 1913 B. Bundle C. --  
 D. -- E. N. D. F. -- G. --.  
 VI. 2 copper covered shell ear plugs, under long bone, 61Rho.  
 Perforated bear tooth, under long bone, 60Rho.  
 VII. A. In structure B. 0.5 C. 1913.  
 VIII. 42 inches below the surface.  
 IX. Skull and long bone recovered.  
 X. See section X, burial Rho1911.

- I. Rho1913. II. 40L5. III. Adult. IV. Male.  
 V. A. Multiple, with 1911, 1912 B. Bundle C. --

## Rho1913 Continued

- D. -- E. N. D. F. -- G. --.
- VI. 2 copper ear plugs, N. D., 62Rho.
- VII. A. In structure B. 0.5 C. 1912.
- VIII. 42 inches below the surface.
- IX. Skull recovered.
- X. See section X, burial Rho1911.
- 
- I. Rho1914. II. 25L5. III. Adult. IV. N. D.
- V. A. Single B. Articulated C. Extended D. On  
back E. N. D. F. -- G. N. D.
- VI. None.
- VII. A. In structure B. 10 C. 1905.
- VIII. 42 inches below the surface, 18 inches into the  
subsoil.
- IX. A crushed skull recovered.
- 
- I. Rho1915. II. 35L10. III. Adult. IV. N. D.
- V. A. Single B. Articulated C. Extended D. On  
back E. N. D. F. -- G. N. D.
- VI. None.
- VII. A. In structure B. 3 C. 1916.

Rhol915 Continued

VIII. 30 inches below the surface; at base of black soil.

IX. No bones recovered.

I. Rhol916. II. 35L10. III. Child. IV. N. D.

V. A. Single B. Articulated C. Extended D. On  
back E. N. D. F. -- G. N. D.

VI. None.

VII. A. In structure B. <1 C. 1917.

VIII. 44 inches below the surface; in subsoil.

IX. No bones recovered.

I. Rhol917. II. 40L10. III. Adult. IV. N. D.

V. A. Single B. Articulated C. Extended D. On  
back E. N. D. F. -- G. N. D.

VI. None.

VII. A. In structure B. 1 C. 1918.

VIII. In subsoil along west side of large pit 42 inches  
below the surface.

IX. Skull recovered.



- I. Rho1918. II. 40L10. III. Adult. IV. N. D.  
 V. A. Single B. Disturbed C. -- D. -- E. N. D.  
 F. -- G. N. D.  
 VI. None.  
 VII. A. In structure B. 1 C. 1917.  
 VIII. 48 inches below the surface; below 1917.  
 IX. No bones recovered.

- I. Rho1919. II. 40L5. III. Adult. IV. N. D.  
 V. A. Multiple, with 1920 B. Skull only C. --  
 D. -- E. N. D. F. -- G. --.  
 VI. None.  
 VII. A. In structure B. 2 C. 1920.  
 VIII. 32 inches below the surface; 8 inches into the  
 subsoil.  
 IX. Crushed skull recovered.

- I. Rho1920. II. 40L5. III. Infant. IV. N. D.  
 V. A. Multiple, with 1919 B. Disturbed C. --  
 D. -- E. N. D. F. -- G. N. D.  
 VI. None.

## Rhol920. Continued

VII. A. In structure B. 2 C. 1919.

VIII. 32 inches below the surface.

IX. No bones recovered.

I. Rhol921. II. 120L5. III. N. D. IV. N. D.

V. A. Single B. Disturbed C. -- D. -- E. N. D.

F. -- G. N. D.

VI. None.

VII. A. Not in structure B. 12 C. 1922.

VIII. 24 inches below the surface; at base of black soil.  
Cut away from chest to knees by 1922.

IX. Lower jaw recovered.

I. Rhol922. II. 120L5. III. Adult. IV. N. D.

V. A. Single B. Articulated C. Extended D. On

back E. N. D. F. -- G. N. D.

VI. None.

VII. A. Not in structure B. 12 C. 1921.

VIII. 48 inches below the surface, 24 inches into the  
subsoil.

IX. No bones recovered.

- I. Rh01923. II. 120L5. III. Adult. IV. N. D. ...
- V. A. Multiple, with 1927, 1928. B. Articulated  
C. Extended D. On back E. In pit F. N. D.  
F. N. D.
- VI. Water bottle, over left elbow, 65Rho.  
Water bottle (crushed in place), over right  
elbow, 66Rho.  
Bowl (crushed), at right hand, 73Rho.  
Mica, in front of shin, 72Rho.
- VII. A. Not in structure B. 15 C. 1923.
- VIII. 48 inches below the surface; 12 inches into the  
subsoil.
- IX. No bones recovered.

- I. Rh01924. II. 115L5. III. Adult. IV. N. D.
- V. A. Multiple, with 1925, 1926 B. Bundle C. --  
D. -- E. In pit F. N. D. G. --.
- VI. Pot (reshaped into a water bottle), left of skull,  
67Rho.
- VIII. A. Not in structure B. 15 C. 1925.
- IX. No bones recovered.

- I. Rh01925 II. 115L5. III. Adult. IV. N. D.
- V. A. Multiple, with 1924, 1926 B. Bundle C. --

## Rho1925 Continued

- D. -- E. In pit F. N. D. G. N. D.
- VI. None.
- VII. A. Not in structure B. 15 C. 1924.
- VIII. 49 inches below the surface.
- IX. No bones recovered.
- 
- I. Rho1926. II. 115L5. III. Adult. IV. N. D.
- V. A. Multiple, with 1924, 1925 B. Bundle C. --  
D. -- E. In pit F. N. D. G. N. D.
- VI. None.
- VII. A. Not in structure B. 16 C. 1924.
- VIII. "44 inches below the surface; burials 1924-1926 in same pit; 24 inches into suosoil, part in from humus surface, for the dirt is well mixed."
- IX. No bones recovered.
- 
- I. Rho1927. II. 120L5. III. Adult. IV. N. D.
- V. A. Multiple, with 1923, 1928 B. Articulated  
C. Extended D. On back E. In pit F. N. D.  
G. N. D.
- VI. 35 shell beads, around neck, 68Rho.  
2 copper ear plugs, N. D., 69Rho.  
Shell beads, at wrists, 70Rho.  
Oblong copper gorget, on chest, 71Rho.  
7 shell beads (large), at right ankle, 167Rho.  
7 shell beads, at left ankle, 168Rho.

## Rhol927 Continued

- VII. A. Not in structure B. 15 C. 1928.
- VIII. 39 inches below the surface; on top of 1923.
- IX. Parts of skull recovered.
- 
- I. Rhol928. II. 120L5. III. Adult. IV. N. D.
- V. A. Multiple, with 1923, 1927 B. Articulated  
 C. Extended D. On back E. In pit F. N. D.  
 G. N. D.
- VI. Oblong copper gorget, on chest, 75Rho.  
 Shell beads, from neck to hips, 74Rho.  
 9 shell beads, N. D., 169Rho.  
 Mass of hematite (ground faces), right hand, 76Rho.  
 Mass of galena (ground faces), right hand, 77Rho.  
 Small lump of red paint, right hand, 78Rho.  
 Small lump of yellow paint, right hand, 79Rho.  
 Red paint, N. D., 80Rho.
- VII. A. Not in structure B. 15 C. 1927.
- VIII. 45 inches below the surface; between 1927 and 1923.
- IX. No bones recovered.

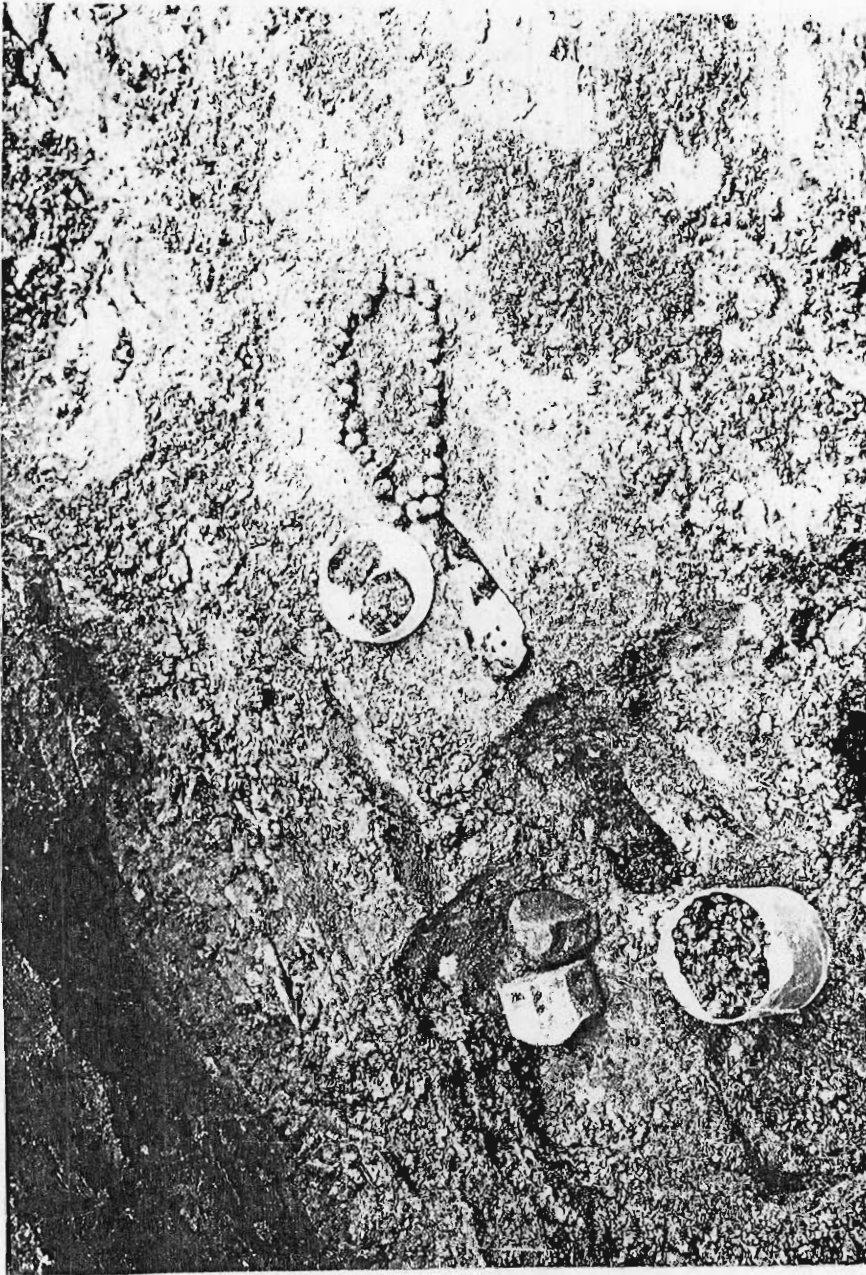


Figure XI-4. Artifacts associated with burials 1927 and 1928.

- I. Rho1929. II. 110L5. III. Adult. IV. N. D.  
 V. A. Multiple, with 1930 B. Articulated  
 C. Extended D. On back E. In pit F. N. D.  
 G. N. D.  
 VI. Greenstone axe, under right knee, 81Rho.  
 Bone awl, between knees, 83Rho.  
 VII. A. Not in structure B. 5 C. 1930.  
 VIII. 43 inches below the surface; 12 inches into the  
 subsoil.  
 IX. Most of skeleton recovered.

- I. Rho1930. II. 110L5. III. Infant (6 months)  
 IV. --.  
 V. A. Multiple, with 1929 B. Articulated  
 C. Extended D. On back E. In pit F. N. D.  
 G. N. D.

## Rho1930 Continued

VI. None.

VII. A. Not in structure B. 15 C. 1929.

VIII. By right arm of 1929.

IX. No bones recovered.

I. Rho1931. II. 110R0. III. N. D. IV. Male.

V. A. Multiple, with 1932 B. Bundle C. --

D. -- E. In pit F. N. D. G. --.

VI. Water bottle, near skull, 102Rho.  
Water bottle (painted), N. D., 135Rho.  
Shell ear plug, N. D., 146Rho.  
2 shell beads, N. D., 147Rho.

VII. A. Not in structure B. 13 C. 1932.

VIII. 12 inches below the surface.

IX. Part of skull recovered.

I. Rho1932. II. 110R0. III. N. D. IV. N. D.

V. A. Multiple, with 1931 B. Bundle C. -- D. --

E. In pit F. N. D. G. --.

VI. None.

VII. A. Not in structure B. 13 C. 1931.

VIII. 12 inches below the surface.

IX. No bones recovered.



- I. Rho1933. II. 120R0. III. N. D. IV. N. D. ...  
 V. A. Single B. Disturbed C. -- D. --  
 E. N. D. F. -- G. N. D.  
 VI. None.  
 VII. A. Not in structure B. 11 C. 1922.  
 VIII. 65 inches down in very black soil. "Hips and  
 about a dozen vertebra, in situ."  
 IX. No bones recovered.

- I. Rho1934. II. 115R0. III. Adult. IV. N. D.  
 V. A. Single B. Articulated C. Extended D. On  
 back E. N. D. F. -- G. (SE-NW).  
 VI. Pot, a bone skull, 84Rho.  
 Fragment of bowl, N. D., 85Rho.  
 2 shell beads, back of skull, 89Rho.  
 Fragment of large pot, back of skull, 90Rho.  
 Stone "cutting tool", at left hand, 91Rho.  
 Bowl, back of skull, 153Rho.  
 Greenstone slab (5 inches x 6 inches), on left  
 shoulder, 86Rho.  
 Bear tooth, on 86Rho, 87Rho.  
 Galena, on left elbow, 88Rho.  
 VII. A. Not in structure B. 10 C. 1940.  
 VIII. 15 inches below the surface.  
 IX. No bones recovered.

- I. Rhol935. II. 125R0. III. Adult. IV. N. D..
- V. A. Single B. Articulated C. Extended D. On  
back E. N. D. F. -- G. N. D.
- VI. Charred corn cobs, on pelvis, 92Rho.
- VII. A. Not in structure B. 7 C. 1937.
- VIII. 20 inches below the surface; near base of black soil.
- IX. Part of skull recovered.
- 
- I. Rhol936. II. 105 O. III. Adult. IV. N. D.
- V. A. Single b. Articulated C. Extended D. On  
back E. In pit F. N. D. G. N. D.
- VI. 6 large shell beads, 3 at each ankle, 93Rho.  
Small beads and perforated pearls, at wrists and  
neck, 94Rho.  
Oblong copper gorget, on chest, 95Rho.  
2 copper ear plugs, one on each side of skull, 96Rho.  
Bone awl, by right ear plug, 97Rho.  
Copper axe, right rear of skull, 98Rho.  
Frog effigy pot, right rear of skull, 100Rho.  
Cane matting, under 98Rho, 99Rho.
- VII. A. Not in structure B. 13 C. 1938.
- VIII. 24 inches below the surface; near base of black soil.
- IX. N. D.
- 
- I. Rhol937. II. 125 O. III. Adult. IV. N. D.
- V. A. Single B. Articulated C. Extended D. On

## Rho1937 Continued.

- back E. N. D. F. -- G. N. D.
- VI. Bowl, rear of skull, 101Rho.
- VII. A. Not in structure B. 7 C. 1935.
- VIII. 34 inches below the surface; on top of the subsoil.
- IX. No bones recovered.
- 
- I. Rho1938. II. 110 O. III. Adult. IV. N. D.
- V. A. Multiple, with 1939 B. Articulated  
C. Extended D. On back E. In pit F. N. D.  
G. (E-W).
- VI. Beads, at ankles, 103Rho.
- VII. A. Not in structure B. 15 C. 1939.
- VIII. 54 inches below the surface; 28 inches into the subsoil.
- IX. No bones recovered.
- 
- I. Rho1939. II. 110R0. III. Adult. IV. N. D.
- V. A. Multiple, with 1938 B. N. D. C. Extended  
D. On back E. In pit F. N. D. G. N. D.
- VI. Water bottle (crushed), in back of skull, 104Rho.  
Snell beads, around neck, 105Rho.  
Shell beads (spool shaped), at wrists, 106Rho.

## Rhol939 Continued

- VII. A. Not in structure B. 15 C. 1938.
- VIII. 52 inches below the surface; by the side of 1938.
- IX. No skeletal material recovered.

I. Rhol939a. II. 125 O. No data.

I. Rhol940. II. 115 O. III. Adult. IV. N. D.

V. A. Single B. Articulated C. Extended

D. On back E. N. D. F. -- G. N. D.

VI. Small ("toy") water bottle, back of skull, 107Rho.  
Vessel, on right hand, 108Rho.

VII. A. Not in structure B. 12 C. 1934.

VIII. 50 inches below the surface; 24 inches into the  
subsoil.

IX. No bones recovered.

I. Rhol940a. II. 125 O. No data.

I. Rhol941. II. 125 O. III. Adult IV. N. D.

V. A. Single B. Disturbed C. -- D. --

E. N. D. F. -- G. --.

## Rho1941 Continued

- VI. None.
- VII. A. Not in structure B. 7 C. 1935.
- VIII. 36 inches below the surface; at base of the black soil.
- IX. Skull fragments recovered.

- I. Rho1942. II. 130L5. III. Adult. IV. N. D.
- V. A. Single B. N. D. C. Extended D. On back  
E. N. D. F. -- G. N. D.
- VI. None.
- VII. A. Not in structure B. 14 C. 1979.
- VIII. 28 inches below the surface.
- IX. No skeletal material recovered.

- I. Rho1943. II. 110 O. III. Adult. IV. N. D.
- V. A. Multiple, with 1944 B. Disturbed C. --  
D. -- E. In pit F. N. D. G. N. D.
- VI. Crushed pot, scattered throughout pit, 109Rho.
- VII. A. Not in structure B. 16 C. 1944.
- VIII. 52 inches below the surface. Bones scattered throughout pit. Disturbed by burial 1945.
- IX. No bones recovered.

- I. Rho1944. II. 110 O. III. Adult. IV. N. D.  
 V. A. Multiple, with 1943 B. Disturbed C. --  
 D. -- E. In pit F. N. D. G. N. D.  
 VI. Crushed pot, scattered throughout the pit, 109Rho.  
 VII. A. Not in structure B. 16 C. 1943.  
 VIII. See VIII, burial 1943.  
 IX. No bones recovered.

- I. Rho1945. II. 110 O. III. Adolescent. IV. N. D.  
 V. A. Single B. Articulated C. Extended D. On  
 back E. In pit F. N. D. G. N. D.  
 VI. None.  
 VII. A. not in structure B. 12 C. 1938.  
 VIII. 54 inches below the surface.  
 IX. NO skeletal material recovered.

I. Rho1946: Number not used.

- I. Rho1947. II. 105R5. III. N. D. IV. N. D.  
 V. A. Single B. Disturbed C. -- D. --  
 E. N. D. F. -- G. N. D.  
 VII. Water bottle, N. D., 110Rho.

## Rho1947 Continued

VIII. Very near the surface; plowed through.

IX. No bones recovered.

I. Rho1948. II. 110R5. III. Adult. IV. N. D.

V. A. Single B. Disturbed C. -- D. --

E. N. D. F. -- G. N. D.

VI. Snell bead, by skull fragments, 110Rho.

VII. A. Not in structure B. 12 C. 1953.

VIII. 8 inches below the surface; plowed through.

IX. No bones recovered.

I. Rho1949. II. 115R5. III. Adult. IV. N. D.

V. A. Single B. N. D. C. Extended D. On back

E. In pit F. N. D. G. N. D.

VI. Copper ear plug, near left ankle, 113Rho.  
 2 large snell beads, one at each ankle, 115Rho.  
 Ceremonial axe, at left knee, 117Rho.  
 Whetrock, by left leg, 118Rho.  
 Bone "shaping tool", on right hand, 120Rho.  
 Stone disc, at right hand, 119Rho.  
 Water bottle, on right wrist, 121Rho.  
 Large vessel fragment, over 121Rho, 122Rho.  
 Beads, at right wrist, 123Rho.  
 Beads, at left wrist, 124Rho.  
 2 copper ear plugs, one on each side of skull,  
 125Rho.

## Rho1949 Continued

Whetrock (small), N. D., 126Rho.  
 Pot, right side of skull, 127Rho.  
 Whetrock, on right elbow, 128Rho.  
 Small beads, around each ankle, 129Rho.  
 Shell fragments, about shins, 130Rho.  
 Mass of beads, at chin, 131Rho.  
 water bottle, above skull, 135Rho.  
 Black pottery glaze, on toes, 112Rho.  
 Hematite, at left ankle, 114Rho.  
 Mass of green paint, off right ankle, 116Rho.

- VII. A. Not in structure B. 5 C. 1970.
- VIII. 32 inches below the surface near the base of the black soil.
- IX. N. D.
- X. Skeleton recorded as 65.5 inches tall.
- I. Rho1950. II. 110R5. III. Adult. IV. N. D.
- V. A. Single B. Articulated C. Extended D. On back E. N. D. F. -- G. N. D.
- VI. Fragment of large pot, at feet, 132Rho.  
 Water bottle, right side of skull, 133Rho.  
 Bowl, left side of skull, 134Rho.
- VII. A. Not in structure B. 11 C. 1958.
- VIII. 50 inches below the surface; 18 inches into the subsoil.
- IX. N. D.



I. Rho1951. II. 110R5. III. Adult. IV. N. D.  
 V. A. Single B. Disturbed C. -- D. --  
 E. N. D. F. -- G. --.  
 VI. None.  
 VII. A. Not in structure B. 12 C. 1952.  
 VIII. 12 inches below the surface.  
 IX. No bones recovered.

I. Rno1952. II. 100R5. III. Adult. IV. N. D.  
 V. A. Single B. Disturbed C. -- D. --  
 E. N. D. F. -- G. --.  
 VI. None.  
 VII. A. Not in structure B. 4 C. 1951.  
 VIII. 12 inches below the surface.  
 IX. No bones recovered.

I. Rho1953. II. 110R5. III. Adult. IV. N. D.  
 V. A. Single B. Disturbed C. -- D. --  
 E. N. D. F. -- G. --.  
 VI. None.  
 VII. A. Not in structure B. 14 C. 1952.

Rho1953 Continued

VIII. 12 inches below the surface.

IX. No bones recovered.

I. Rho1954. II. 115R5. III. Adult. IV. N. D.

V. A. Single B. N. D. C. Extended D. On  
back E. N. D. F. -- G. N. D.

VI. Clam shell effigy, right side of skull, 136Rho.

VII. A. not in structure B. 3 C. 1955.

VIII. 26 inches below the surface. Disturbed 1955.

IX. Skull and mandible recovered.

I. Rho1955. II. 115R5. III. Adult. IV. N. D.

V. A. Single B. Disturbed C. -- D. --  
E. N. D. F. -- G. --.

VI. Water bottle, N. D., 137Rho.  
Pot, N. D., 137Rho.  
Bowl, N. D., 138Rho.  
Pottery discoidal, N. D., 139Rho.

VII. A. Not in structure B. 3 C. 1954.

VIII. 26 inches below the surface. Disturbed by and  
piled around 1954.

IX. Skull part of mandible recovered.

- I. Rho1956. II. 125R5. III. Adult. IV. N. D.  
 V. A. Multiple, with 1957 B. Disturbed C. --  
 D. -- E. N. D. F. -- G. --.  
 VI. Water bottle, left side of skull, 141Rho.  
 Pottery fragments, near skull, 143Rho.  
 Pebble hammer, N. D., 144Rho.  
 VII. A. Not in structure B. 11 C. 1957.  
 VIII. 24 inches below the surface; aboriginal disturbance.  
 IX. No bones recovered.

- I. Rho1957. II. 125R5. III. Adult. IV. N. D.  
 V. A. Multiple, with 1956 B. Disturbed C. --  
 D. -- E. N. D. F. -- G. --.  
 VI. Broken pot, under skull, 142Rho.  
 Pottery fragments, near skull, 143Rho.  
 Pebble hammer, N. D., 145Rho.  
 VII. A. Not in structure B. 11 C. 1956.  
 VIII. 24 inches below the surface; in black soil.  
 Aboriginal disturbance.  
 IX. No bones recovered.

- I. Rho1958. II. 110R5. III. Adult. IV. N. D.  
 V. A. Single B. N. D. C. Extended D. On  
 back E. N. D. F. -- G. N. D.

## Rho1958 Continued

- VI. Water bottle (crushed), back of skull, 148Rho.  
 VII. A. Not in structure B. 14 C. 1947.  
 VIII. 52 inches below the surface; deep into the subsoil.  
 IX. No bones recovered.

- I. Rho1959. II. 115R5. III. Adult. IV. N. D.  
 V. A. Multiple, with 1960 B. Bundle C. --  
 D. -- E. N. D. F. -- G. --.  
 VI. None.  
 VII. A. Not in structure B. 9 C. 1960.  
 VIII. 24 inches below the surface.  
 IX. No bones recovered.

- I. Rho1960. II. 115R5. III. Adult. IV. Female.  
 V. A. Multiple, with 1959 B. Bundle C. --  
 D. -- E. N. D. F. -- G. --.  
 VI. Frog effigy bowl, right side of skull, 149Rho.  
 Shell bead, near skull, 150Rho.  
 VII. A. Not in structure B. 9 C. 1959.  
 VIII. 24 inches below the surface.  
 IX. Skull, less mandible, recovered.

- I. Rho1961. II. 125R5. III. Adult. IV. N. D.  
 V. A. Multiple, with 1962, 1963 B. Bundle  
 C. -- D. -- E. N. D. F. -- G. --.  
 VI. None.  
 VII. A. Not in structure B. 3 C. 1962.  
 VIII. 52 inches below the surface.  
 IX. No bones recovered.

- I. Rho1962. II. 125R5. III. Adult. IV. N. D.  
 V. A. Multiple, with 1961, 1968 B. Bundle C. --  
 D. -- E. N. D. F. -- G. --.  
 VI. None.  
 VII. A. Not in structure B. 8 C. 1963.  
 VIII. 52 inches below the surface.  
 IX. No bones recovered.

- I. Rho1963. II. 125R5. III. Adult. IV. N. D.  
 V. A. Multiple, with 1961, 1962. B. Bundle C. --  
 D. -- E. N. D. F. -- G. --.  
 VI. None.  
 VII. A. Not in structure B. 3 C. 1962.  
 VIII. 52 inches below the surface.

## Rhol963 Continued

- IX. No bones recovered.
- X. Bones of burials 1961-1963 "neatly arranged."
- 
- I. Rhol964. II. Unlocated. III. Adult. IV. N. D.
- V. A. Single B. N. D. C. Extended D. On back  
E. N. D. F. -- G. N. D.
- VI. Pot (crushed in place), left of skull, 154Rho.
- VII. N. D.
- VIII. 40 inches below the surface; 12 inches into the  
suosoil. "Head next to house wall."
- IX. N. D.
- 
- I. Rhol965. II. 105 O. III. Adult. IV. N. D.
- V. A. Multiple, with 1966 B. Articulated  
C. Extended D. On back E. N. D. F. --  
G. (E-W).
- VI. None.
- VII. A. Not in structure B. 16 C. 1966.
- VIII. 49 inches below the surface; 18 inches into the  
subsoil.
- IX. No bones recovered.

I. Rho1966. II. 105 O. III. Child. IV. N. D.  
 V. A. Multiple, with 1965 B. Articulated  
 C. Extended D. On back E. N. D. F. --  
 G. N. D.

VI. None.

VII. A. Not in structure B. 16 C. 1965.

VIII. 46 inches below the surface.

IX. No bones recovered.

I. Rho1967. II. 115 O. III. Adolescent. IV. N. D.

V. A. Single B. N. D. C. Extended D. On back  
 E. N. D. F. -- G. N. D.

VI. None.

VII. A. Not in structure B. 5 C. 1969.

VIII. Near surface; most of the bones carried away by  
 plow.

IX. No bones recovered.

I. Rho1968. II. 120R10. III. Adult. IV. N. D.

V. A. Single B. Disturbed C. Extended D. On  
 back E. N. D. F. -- G. N. D.

VI. Large pottery fragment, on right knee, 156Rho.  
 Water bottle (neck broken off and break smoothed,  
 on right foot, 157Rho.

## Rho1968 Continued

Small ("toy") water bottle, on right foot, 158Rho.  
 Vessel (crushed), at left hand, 159Rho.  
 Pot (crushed), at right hand, 160Rho.  
 Bowl, inverted over 159Rho, 161Rho.  
 Copper ear plug, right side of skull, 162Rho.

- VII. A. Not in structure B. 3 C. 1971.  
 VIII. 24 inches below the surface. Area of hips cut into  
 by aboriginal disturbance.  
 IX. No bones recovered.

- I. Rho1969. II. 115R10. III. Adult. IV. N. D.  
 V. A. Single B. Articulated C. Extended D. On  
 back E. N. D. F. -- G. N. D.

VI. Clam shell effigy bowl, at left foot, 163Rho.  
 Bowl, at left foot in 163Rho, 162Rho.  
 Water bottle, at left hand, 164Rho.

- VII. A. Not in structure B. 8 C. 1970.  
 VIII. 24 inches below the surface; in black soil.  
 IX. No bones recovered.

- I. Rho1970. II. 115R10. III. Adult. IV. N. D.  
 V. A. Single B. N. D. C. Extended D. On back  
 E. N. D. F. -- G. N. D.  
 VI. None.  
 VII. A. Not in structure B. 6 C. 1969.



## Rho1970 Continued

VIII. 36 inches below the surface; 8 inches into the subsoil.

IX. No skeletal material recovered.

I. Rho1971. II. 120R10. III. Adult. IV. N. D.

V. A. Multiple, with 1972 B. Disturbed C. --

D. -- E. N. D. F. -- G. --.

VI. None.

VII. A. Not in structure B. 3 C. 1972.

VIII. 40 inches below the surface.

IX. No bones recovered.

I. Rho1972. II. 120R10. III. Adult. IV. N. D.

V. A. Multiple, with 1971 B. Disturbed C. --

D. -- E. N. D. F. -- G. --.

VI. None.

VII. A. Not in structure B. 3 C. 1971.

VIII. 40 inches below the surface.

IX. No bones recovered.

- I. Rhol973. II. 120R10. III. Infant. IV. ---  
 VI. A. Multiple, with 1974, 1975 B. Bundle C. --  
 D. -- E. In pit F. 3.5 feet x 1.0 feet x ?  
 G. ---  
 VI. None.  
 VII. A. Not in structure B. 0.5 C. 1974.  
 VIII. 60 inches below the surface; 30 inches into the  
 subsoil.  
 IX. No bones recovered.

- I. Rhol974. II. 120R10. III. Adult. IV. N. D.  
 V. A. Multiple with 1973, 1975 B. Bundle C. --  
 D. -- E. In pit F. 3.5 feet x 1.0 feet x ?  
 G. ---  
 VI. None.  
 VII. A. Not in structure B. 0.5 C. 1973.  
 VIII. 60 inches below the surface; 30 inches into the  
 subsoil.  
 IX. No bones recovered.

- I. Rhol975. II. 120R10. III. Child (4). IV. ---  
 V A. Multiple, with 1973, 1974 B. Bundle C. --  
 D. -- E. In pit F. 3.5 feet x 1.0 feet x ?  
 G. ---

## Rho1975 Continued

- VI. None.
- VII. A. Not in structure B. 1 C. 1974.
- VIII. 60 inches below the surface; 30 inches into the subsoil.
- IX. No skeletal material recovered.

- I. Rho1976. II. 125R10. III. Adult. IV. N. D.
- V. A. Single B. Disturbed c. -- D. --  
E. N. D. F. -- G. --.

- VI. None.
- VII. A. Not in structure B. 0.5 C. 1963.
- VIII. 24 inches below the surface.
- IX. No bones recovered.

- I. Rho1977. II. 120L10. III. Adult. IV. N. D.
- V. A. Single B. Disturbed C. Extended D. On back E. N. D. F. -- G. N. D.
- VI. Water bottle, right side of skull, 170Rho.  
Bowl, left side of skull, 171Rho.
- VII. A. Not in structure B. 17 C. 1927.
- VIII. 59 inches below the surface; 24 inches into the subsoil. Disturbed by 1927.
- IX. Mandible recovered.

I. Rho1978. II. 115L10. III. Adult. IV. N. D.  
 V. A. Single B. Disturbed C. Extended D. On  
 back E. N. D. F. -- G. N. D.

VI. 2 bowls, by right arm, 172, 173Rho.  
 Water bottle, by right arm, 174Rho.  
 Bone awl, on chest, 176Rho.  
 Small bowl, where head was, 177Rho.  
 Water bottle, where head was, 178Rho.  
 Whetrock, where head was, 180Rho.  
 Pottery tool (fragment) where head was, 181Rho.  
 Water bottle (painted), where head was, 182Rho.  
 Bone awl, where head was, 183Rho.  
 Water bottle, where head was, 184Rho.  
 Bowl (crushed) where head was, 185Rho.  
 Yellow paint, on chest, 175Rho.  
 Clay, inside 178Rho, 179Rho.

VII. A. Not in structure B. 20 C. 1926.

VIII. 30 inches below the surface; 8 inches into the  
 subsoil. Head and part of chest cut away by 1926.

IX. No bones recovered.

I. Rho1979. II. 130 0. III. Adult. IV. N. D.

V. A. Single B. Articulated C. Extended D. On  
 back E. N. D. F. -- G. N. D.

VI. Large pottery fragment, under 192, 193Rho, 191Rho.  
 Small ("toy") bowl, left of skull, 192Rho.  
 Whetrock, under 191Rho, 195Rho.  
 Pot, left of skull, 193Rho.  
 Shell beads, right side of chin, 196Rho.  
 Shell, in 193Rho, 194Rho.  
 Charcoal, left side of chest, 197Rho.

## Rho1979 Continued

VII. A. Not in structure B. 11 C. 1980.

VIII. 28 inches below the surface.

IX. Crushed skull recovered.

I. Rho1980. II. 130 O. III. Adult. IV. N. D.

V. A. Single B. Disturbed C. -- D. --

E. N. D. F. -- G. N. D.

VI. None.

VII. A. Not in structure B. 9 C. 1980.

VIII. 30 inches below the surface. Aboriginal disturbance; skeleton cut off at hips.

IX. No skeletal material recovered.

I. Rho1981, Rho1982, Rho1983. II. 40 O.

III. Adults. No other data except that all three were aboriginally disturbed.

I. Rho1984. II. 40 O. III. Adult (50+). IV. Male.

V. A. Single B. Articulated C. Extended D. On back E. N. D. F. -- G. N. D.

VI. Pottery discoidal, at right knee, 198Rho. Shells, in front of chin, 199Rho.

VII. A. Not in structure B. 0.5 C. 1981.

## Rhol984 Continued

VIII. 15 inches below the surface.

IX. Crushed skull and some other bones recovered.

I. Rhol985. II. 40R10. III. Adult. IV. N. D.

V. A. Single B. Articulated C. Extended D. On  
back E. N. D. F. -- G. N. D.

VI. None.

VII. A. Not in structure B. 8 C. 1990.

VIII. 15 inches below the surface; in black soil.

IX. Crushed skull recovered.

I. Rhol986. II. 50R10. III. Adult. IV. N. D.

V. A. Multiple, with 1988 B. Disturbed C. --  
D. -- E. In pit F. N. D. G. N. D.

VI. None.

VII. A. Not in structure B. 15 C. 1987.

VIII. 28 inches below the surface; at base of black soil.

IX. No bones recovered.

I. Rhol987. II. 50R5. III. Adult. IV. N. D.

V. A. Single B. N. D. C. Extended D. On back  
E. In pit F. N. D. G. N. D.

VI. None.

## Rho1987 Continued

- VII. A. Not in structure B. 15 C. 1988.
- VIII. 28 inches below the surface; at base of black soil. 1987 disturbed 1986 and 1988.
- IX. Mandible recovered.
- 
- I. Rho1988. II. 50R10. III. Adult. IV. N. D.
- V. A. Multiple, with 1986 B. Disturbed C. --  
D. -- E. In pit F. N. D. G. N. D.
- VI. None.
- VII. A. Not in structure B. 16 C. 1987.
- VIII. 28 inches below the surface; at base of black soil.
- IX. Skull and mandible recovered.
- 
- I. Rho1989. II. 115L25. III. Adult. IV. N. D.
- V. A. Single B. Articulated C. Extended D. On  
back E. N. D. F. -- G. N. D.
- VI. Copper ear plug, underneath skull, 200Rho.  
Fragment of water bottle, left elbow, 201Rho.  
Bone awl, left side of skull, 202Rho.
- VII. A. Not in structure B. 6 C. 1978.
- VIII. 28 inches below the surface.
- IX. Part of skull recovered.
- X. Burial pit cut across a wall trench.

I. Rhol990. II. 30R5. III. Adult. IV. N. D.

V. A. Single B. Articulated C. Extended

D. On back E. N. D. F. -- G. N. D.

VI. None.

VII. A. Not in structure B. 7 C. 1983.

VIII. 8 inches below the surface.

IX. No bones recovered.

I. Rhol991. II. Unlocated III. Adult. IV. N. D.

V. A. Single B. Bundle C. -- D. -- E. N. D.

F. -- G. N. D.

VI. None.

VII. N. D.

VIII. 18 inches below the surface resting on undisturbed sand.

IX. No bones recovered.

X. "A few long bones in a bundle. The ends of the bones had been broken off before burial." May be near 1992.

I. Rhol992. II. 65R15. III. Adult. IV. N. D.

V. A. Single B. N. D. C. N. D. D. N. D.

E. N. D. F. -- G. N. D.



## Rhol992 Continued

- VI. None.
- VII. A. In structure B. 30 C. 1988.
- VIII. 20 inches below the surface. Long bones and a few ribs resting on undisturbed sand floor at the intersection of two wall trenches.
- IX. No bones.

- I. Rhol993. II. 95 0. III. Adult. IV. N. D.
- V. A. Single B. Articulated C. Extended D. On back E. N. D. F. -- G. N. D.
- VI. None.
- VII. A. Not in structure B. 30 C. 1965.
- VIII. 26 inches below the surface.
- IX. No skeletal material recovered.

- I. Rhol994. II. 110L45. III. Adult. IV. N. D.
- V. A. Single B. Articulated C. Extended D. On back E. N. D. F. -- G. N. D.
- VI. None.
- VII. A. Not in structure B. 13 C. 1998.
- VIII. 29 inches below the surface.

## Rhol1994 Continued

- IX. Crushed skull and a few bones recovered.
- X. Skeleton recorded as 66 inches tall.
- 
- I. Rhol1995. II. 130L25. III. Adult. IV. N. D.
- V. A. Single B. Disturbed C. Extended D. On back E. N. D. F. -- G. N. D.
- VI. None.
- VII. A. Not in structure B. 19 C. 1989.
- VIII. 32 inches below the surface.
- IX. No skeletal material recovered.
- X. "Disturbed by somebody's pit. The whole area surrounding this skeleton shows the appearance of former digging."
- 
- I. Rhol1996. II. Unlocated. III. Adult. IV. N. D.
- V. A. Single B. N. D. C. Extended D. On back E. N. D. F. -- G. N. D.
- VI. Fragments of pot, under skull, 211Rho.
- VII. N. D.
- VIII. 42 inches below the surface; 15 inches into the subsoil.
- IX. Skull recovered.
- X. Skeleton recorded as 65 inches tall.

- I. Rhol1997. II. 105L35. III. Adult. IV. N. D.  
 V. A. Multiple, with 1998, 1999 B. N. D.  
 C. Extended D. On back E. N. D. F. --  
 G. N. D.  
 VI. None.  
 VII. A. Not in structure B. 7 C. 1998.  
 VIII. 36 inches below the surface; at base of black soil.  
 IX. Most of skeleton recovered.  
 X. Skeleton recorded as 66 inches tall.

- I. Rhol1998. II. 105L30. III. Adult. IV. N. D.  
 V. A. Multiple, with 1997, 1999 B. Bundle  
 (field notes say disturbed by 1997) C. --  
 D. -- E. N. D. F. -- G. N. D.  
 VI. None.  
 VII. A. Not in structure B. 6 C. 1997.  
 VIII. 36 inches below the surface. "Bones all along  
 and by skeleton 1997."  
 IX. No bones recovered.

- I. Rhol1999. II. 105L35. III. Adult. IV. N. D.  
 V. A. Multiple, with 1997, 1998 B. Bundle (field  
 notes say disturbed by 1997) C. -- D. --

## Rho1999 Continued

- E. N. D. F. -- G. N. D.
- VI. None.
- VII. A. Not in structure B. 7 C. 1997.
- VIII. 36 inches below the surface. "Bones all along and by skeleton 1997."
- IX. No bones recovered.
- 
- I. Rho2000. II. 45R5. III. Adult. IV. N. D.
- V. A. Single B. Disturbed C. Extended D. On back E. N. D. F. -- G. N. D.
- VI. None.
- VII. A. Not in structure B. 11 C. 1986.
- VIII. 8 inches below the surface.
- IX. No bones recovered.
- X. "Head cut away by plow."

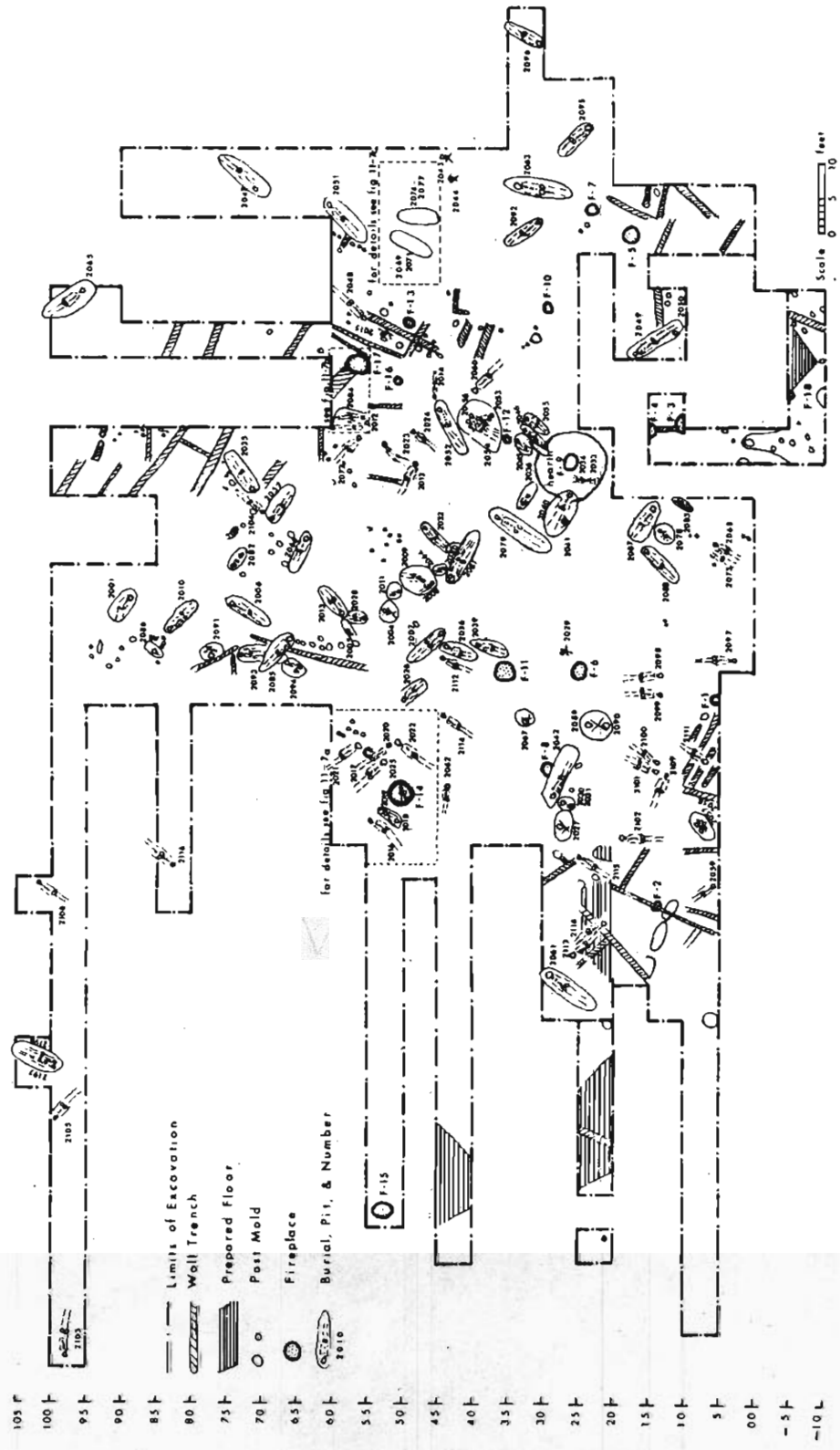
## The Upper Rhodes Site

During December 1935 and January 1936 the Alabama Museum of Natural History excavated approximately 10,000 square feet of an area which they designated the Upper Rhodes Site. The exact location of this site, though within the limits of the Rhodes farm, is not known. The best guess at present is that the site was in the northernmost of the two light colored sandy areas in figure XI-1. That is, in an area north of the house and north of the fenced area northwest of the house. However, this location is only a guess.

The excavators gridded the area of the Upper Rhodes Site they were to excavate into five by five foot squares. The five foot increments to right and left of the center line were designated L1 through L20 and R1 through R18. The five foot increments up the center line were designated 0 through 105. Two points were also set below the original zero point; these were numbered negative 5 and negative 10. The grid system and the archaeological features recovered from the Upper Rhodes Site are shown in figure XI-6.

Almost every square foot of the Upper Rhodes Site that was excavated had an archaeological feature of one kind or another on it. Wall trenches and hard packed floors

UPPER RHODES SITE  
Moundville, Alabama



A 11 12 13 14 15 16 17 18 19 20

Figure XI-6. Plan of excavation, Upper Rhodes Site.

TABLE XI-4  
Firebasins from the Upper Rhodes Site

Number	Square Number	Depth Found Below Surface (Inches)	Outside Diameter (Inches)	Contents and Association
F-1	5L2	--	15	--
F-2	10L8	--	16	Cut by wall trench
F-3	10R6	--	26	--
F-4	10R6	--	26	--
F-5	15R11	--	22	Charcoal and ashes
F-6	25L1	--	28	--
F-7	15R12	--	12	--
F-8	25L4	2y	18	Cut in half by burial
F-9	25R4	--	25	--
F-9	25R4	--	120	Two infants
F-10	25L9	--	19	--
F-11	35L1	--	36	--
F-12	35R5	--	12	--
F-13	45R8	--	15	--
F-14	50L5	--	40	Yellow and red clay, charcoal and an infant (see figure XI-7a).
F-15	50L4	--	15	--
F-16	50R7	--	13	--
F-17	55R7	8	50	Yellow clay (see figure XI-7c).
F-18	55R6	--	6	(see figure XI-7c)
F-19	55R6	--	6	(see figure XI-7c)

abounded; burials and firebasins were scattered throughout the excavation; unassociated artifacts were abundant. The only features which were scarce in comparison to the Rhodes Site were thick midden areas and garbage pits.

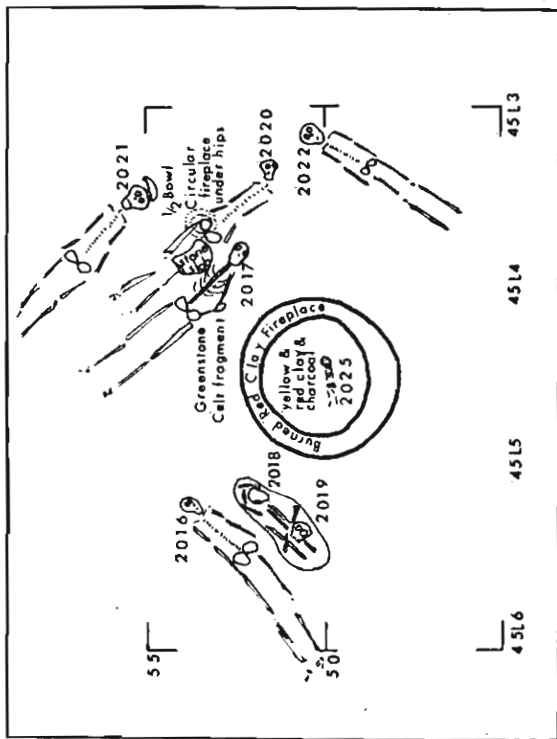
The firebasins from the Upper Rhodes Site constituted one of the major classes of archaeological features recovered by the excavators. The locations, dimensions and associations of these firebasins are given in Table XI-4.

Three of the firebasins recovered from the Upper Rhodes Site are by virtue of their form or associations deserving of special mention. Firebasin F-14, in square 50L65, had an infant interred in it and a number of extended and bundle burials around it. Figure XI-7a shows the relationship of the burials to the firebasin. It would seem that these features were elements in a single ceremony. An infant (URho2025) was placed in a firebasin and covered with red and yellow clay and charcoal. Bundle burials (URho2018 and URho2019) were brought from storage and placed near the firebasin. Articulated burials (URho2016, URho2017, URho2020, URho2021 and URho2022) were placed around the firebasin. (Note that URho2020's hips were placed in a small firebasin).

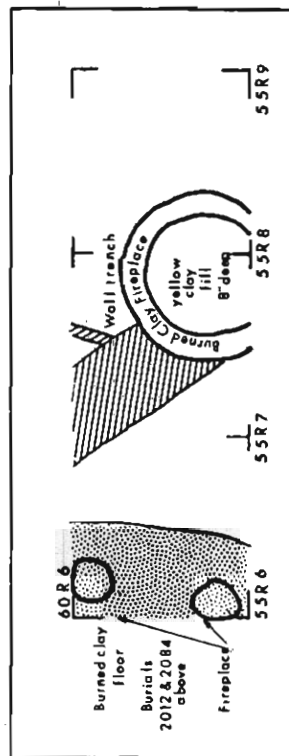
Firebasin F-9 (see figure XI-6) was similar to F-14 in its associations but was unlike any firebasin at Moundville in its form. Firebasin F-9 was a conventional round



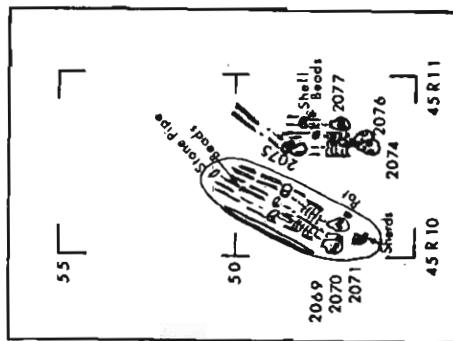
BURIAL DETAILS  
 UPPER RHODES SITE  
 Moundville, Alabama



a



b



c

Figure XI-7. Upper Rhodes Site, burial details.

firebasin set in a hearth area 10 feet in diameter. At the one o'clock position of the hearth a fired clay pointer was set; if the grid system were oriented north-south the pointer would be at northeast. Two infants (URho2033 and URho2034) were laid head to head on the hearth and several burials had been interred around the hearth.

Firebasin F-17, in square 55R7, was a conventional round firebasin which had been intentionally filled with yellow clay (see figure XI-7b). To the left of firebasin F-17 were two small firebasins (F-18 and F-19) set in a burned clay floor. Burials URho2012 and URho2084 were found above this floor (see figures XI-6 and XI-7b).

The excavators of the Upper Rhodes Site recorded, by square number, most of the artifacts found apart from the burials. In some instances more exact locations and associations were recorded. These artifacts, their locations and their associations are presented in Table XI-5.

Burials constituted the major class of archaeological features from the Upper Rhodes Site. Most of these burials are shown in figure XI-6. One group of burials is detailed in figure XI-7c. Burials URho2069, URho2070 and URho2071 were a multiple burial of three adults. Burial URho2069

TABLE XI-5

## In Situ Artifacts from the Upper Rhodes Site

Artifact	Square Number	Depth (Inches)	Association	Catalogue Number (Suffixed by Rao)
Small bowl	75 O	--	In garbage dump	217
Stone bead	50L1	6	---	224
Fragment of spatulate celt	50R7	36	On top of undisturbed sand	225
Water bottle fragments	45L2	14	---	228
Greenstone celt	45L2	14	---	229
Projectile point (black stone)	45L7	--	---	230
Fragment of greenstone celt	45L6	12	---	231
Bone awl	40L1	--	---	232
Bone awl	--	--	In back-dirt	233
Bone awl	--	--	In back-dirt	234
Pipe (kaolinite)	25L5	8	---	235
Bone awl	--	--	---	236
Fragment of greenstone celt	--	--	In back-dirt	237
Bone awl	--	--	In back-dirt	238
Pottery discoidal	--	--	---	239
Pitted stone	--	--	---	240
Bone awl	--	--	---	241

TABLE XI-5 Continued

Artifact	Square Number	Depth (Inches)	Association	Catalogue Number (Suffixed by rho)
Pot	25R11	30	---	276
8 bone awls	--	--	---	278-284
Grinding stone	--	--	---	285
2 sandstone whetstocks	--	--	---	286, 287
Unworked greenstone	--	--	---	288
3 pebble hammers	--	--	---	289-291
Prepared conglomerate nodule ("for making discoidal")	--	--	---	292
4 fragments of greenstone celts	--	--	---	293-296
3 sandstone discoidal	--	--	---	297-299
Bowl (small)	o0R2	12	---	302
Greenstone celt	--	--	---	319
Flint blank	90R6	--	At base of house wall	320
Pitted stone	--	--	---	321
Effigy head (from vessel)	--	--	---	322
Pottery discoidal	--	--	---	323
Fragments of large pot	--	--	---	324
2 shell beads	OR3	--	---	325
Greenstone celt	85R1	--	In post mold	243
Mica	85R1	--	In post mold	244
Bone awl	25R4	--	In F-9	246
Pot sherd	25R4	--	In F-9	247

TABLE XI-5 Continued

Artifact	Square Number	Depth (Inches)	Association	Catalogue Number (Suffixed by Rho)
Duck's head from vessel	25R1	--	---	250
Pot (2 handles)	25R8	--	---	253
Pottery elbow pipe	30R5	12	---	254
Greenstone celt	60R13	14	In post mold	258
Fragment of greenstone celt	85R13	18	---	259
Fragment of greenstone celt	80R13	18	---	260
Potsherds	25R9	14	In F-10	261
Stone discoidal	30R6	12	---	262
Graphite ("Mexican")	5L9	12	---	263
Water bottle (small)	--	--	In back-dirt	264
Bone awl	--	--	---	267
Sandstone discoidal	--	--	---	268
Pitted stone	40R6	14	---	269
Pot sherd	5L3	--	---	270
Shell disc	---	--	---	326
Greenstone celt	90R6	--	---	327
Bowl fragments	55R8	12	---	330
Bowl fragments	30R10	8	---	331
Mica	55R5	8	---	332
Limonite coated discoidal	--	--	---	342

TABLE XI-5 Continued

Artifact	Square Number	Depth (Inches)	Association	Catalogue Number (Suffixed by Rho)
2 abraiding stones	--	--	---	343, 344
Bone awl	--	--	---	345
Pitted stone	--	--	---	346
Fragment of greenstone axe	--	--	---	347
Coal discoidal	--	--	---	348
Sandstone discoidal	--	--	---	349
Bone awl	65L1	--	---	352
Fragments of large vessel	20L7	--	On house floor	353
Pitted stone	20L7	--	On house floor	354
Fragment of large pot	--	--	---	355
3 greenstone axe fragments	--	--	---	356--358
Petrified wood	--	--	---	359
"Flaking tool"	--	--	---	360
Fragment of a large stone axe	--	--	---	361
Fragment of a painted vessel	--	--	---	362
Duck's head (from a vessel)	--	--	---	363
Charcoal	25L5	--	In post mold	None

was above URho2070 and both were to the left of URho2071. A long wooden "lance" had been placed to the left of URho2069; a number of sherds had been placed above the skull of URho2070 and a stone pipe and some beads were near its feet; a pot, which may have been a chance inclusion, was to the right of URho2071.

To the right of burials URho2069 to URho2071 was another multiple burial containing burials URho2074 to URho2077. An adult, URho2076 and a child, URho2077, were placed in the bottom of a pit. The adult was accompanied by a paint grinding stone covered with red pigment; the child had shell beads near its hands. An adult, URho2074, was placed above URho2076, and another adult, URho2075, was placed at the hips of URho2074. Neither of these last two burials was accompanied by artifacts.

These and all other burials from the Upper Rnodes Site are described in detail below.

The Upper Rhodes Site  
Burials URho2001 to URho2096  
Guide to Burial Descriptions

N. D. = No Data; -- = Not Applicable

- I. Site designation and burial number (i. e. URho2001).
- II. Square number.
- III. Age.
- IV. Sex (if given on C. E. Snow's burial cards).
- V. Form of burial:
  - A. Single - or multiple (if multiple numbers of associated burials given).
  - B. Articulated, partially articulated, bundle, disturbed, skull only.
  - C. Extended, partially flexed, fully flexed.
  - D. On back, on right side, on left side, on face.
  - E. In pit, no pit.
  - F. Dimensions of pit.
  - G. Orientation (head-feet). Directions enclosed in parentheses (E-W) or E-(W) indicate an uncertainty in one or both directions.
- VI. Internal association and locations with field specimen numbers: e. g., pot, right shoulder, 212Rho.
- VII. External associations:
  - A. In structure, not in structure.
  - B. Nearest firebasin, in feet.
  - C. Nearest neighbor burial number.
- VIII. Stratigraphic and other associations.



IX. Bones recovered; skeletal condition.

X. Remarks.

I. URho2001. II. 85 0. III. Adult. IV. N. D.

V. A. Single B. N. D. C. Partially flexed D. On  
back E. In pit F. 5.5 feet x 2.3 feet x ?  
G. N. D.

VI. Pot (4 handles), over right elbow, 212Rho.  
Pot (part of rim missing), over left elbow, 213Rho.

VII. A. Not in structure B. >20 C. 2086.

VIII. 10 inches below the surface.

IX. No bones recovered.

I. URho2002. II. Unlocated. III. Child. IV. N. D.

V. A. Single B. N. D. C. Extended D. On back  
E. N. D. F. -- G. N. D.

VI. None.

VII. N. D.

VIII. 12 inches below the surface.

IX. N. D.

- I. URho2003. II. 55 O. III. Adult. IV. N. D.  
 V. A. Single B. Articulated C. Extended D. On  
 back E. In pit F. N. D. G. N. D.  
 VI. None.  
 VII. A. Not in structure B. > 20 C. 2005.  
 VIII. 14 inches below the surface.  
 IX. No bones recovered.

- I. URho2004. II. 50 O. III. Adult. IV. N. D.  
 V. A. Single B. Disturbed C. -- D. -- E. In  
 pit F. N. D. G. N. D.  
 VI. Bowl (broken), near skull, 214Rho.  
 Projectile point (point broken off), 215Rho.  
 VII. A. Not in structure B. >20 C. 2011.  
 VIII. 12 inches below the surface.  
 IX. N. D.

- I. URho2005. II. 55 O. III. Infant. IV. --.  
 V. A. Single B. Articulated C. Extended D. On  
 back E. In pit F. N. D. G. N. D.  
 VI. None.  
 VII. A. Not in structure B. >20 C. 2028.  
 VIII. 20 inches below the surface.

## URho2005 Continued

IX. No bones recovered.

I. URho2006. II. 70 0. III. Adult. IV. N. D.

V. A. Single B. Articulated C. Extended D. On  
back E. In pit F. 6.1 feet x 1.5 feet x ?  
G. N. D.

VI. Snell beads, around neck, 218Rho.

VII. A. Not in structure B. >20 C. 2085.

VIII. 15 inches below the surface.

IX. No bones recovered.

I. URho2007. II. 45L1. III. Adult. IV. N. D.

V. A. Single B. Articulated C. Extended D. On  
back E. In pit F. 6.0 feet x 1.4 feet x ?  
G. N. D.

VI. None.

VII. A. Not in structure B. 16 C. 2036.

VIII. 8 inches below the surface.

IX. N. D.

- I. URho2008. II. 45 0. III. Child. IV. N. D.  
V. A. Multiple, with 2009 B. Articulated  
C. Extended D. On back E. In pit F. 4 feet  
in diameter G. N. D.  
VI. None.  
VII. A. Not in structure B. >20 C. 2009.  
VIII. 8 inches below the surface.  
IX. N. D.

- I. URho2009. II. 45 0. III. Child. IV. N. D.  
V. A. Multiple, with 2008 B. Articulated  
C. Extended D. On back E. In pit F. 4 feet  
in diameter G. N. D.  
VI. Water bottle (decorated; broken), left of skull,  
219Rho.  
VII. A. Not in structure B. 20 C. 2008.  
VIII. 8 inches below the surface.  
IX. N. D.

- I. URho2010. II. 80L1. III. Adult. IV. N. D.  
V. A. Single B. Articulated C. Extended D. On  
back E. In pit F. 5.0 feet x 2.0 feet x ?  
G. N. D.

## URho2010 Continued

- VI. None.
- VII. A. Not in structure B. >20 C. 2086.
- VIII. 24 inches below the surface. Pit went down into undisturbed sand.
- IX. No bones recovered.

- I. URho2011. II. 50R1. III. Infant. IV. --.
- V. A. Single B. Articulated C. Extended D. On back E. In pit F. 2 feet in diameter G. N. D.
- VI. One-half a pot (beaded rim), right of skull, 220Rho.
- VII. A. Not in structure B. >20 C. 2004.
- VIII. 10 inches below the surface.
- IX. No bones recovered.

- I. URho2012. II. 55R7. III. Adolescent. IV. N. D.
- V. A. Multiple, with 2084 B. Articulated  
C. Extended D. On back E. In pit F. N. D.  
G. N. D.
- VI. Greenstone pendent in shape of monolithic axe, over the skull, 221Rho.  
Axe, over the skull, 221Rho.

## URho2012 Continued

VII. A. In structure B. 8 C. 2084.

VIII. 14 inches below the surface.

IX. no bones recovered.

I. URho2013. II. 45R4. III. Adult. IV. N. D.

V. A. Single B. Articulated C. Extended D. On  
back E. N. D. F. -- G. N. D.

VI. None.

VII. A. Not in structure B. 17 C. 2023.

VIII. 8 inches below the surface.

IX. N. D.

I. URho2014. II. 45R7. III. Adult. IV. N. D.

V. A. Single B. Articulated C. Extended D. On  
back E. N. D. F. -- G. N. D.

VI. None.

VII. A. Not in structure B. 7 C. 2052.

VIII. 23 inches below the surface.

IX. N. D.

- I. URho2015. II. 50R7. III. Adult. IV. N. D.  
 V. A. Single B. N. D. C. -- D. -- E. N. D.  
 F. -- G. N. D.  
 VI. None.  
 VII. A. In structure B. 3 C. 2048.  
 VIII. 33 inches below the surface.  
 IX. N. D.  
 X. "Only a few long bones buried in a ...house wall."

- I. URho2016. II. 50L6. III. Adult. IV. N. D.  
 V. A. Single B. Articulated C. Extended D. On  
 back E. N. D. F. N. D. G. N. D.  
 VI. None.  
 VII. A. Not in structure B. 3 C. 2018.  
 VIII. 12 inches below the surface.  
 IX. N. D.  
 X. See figure X1-7a.

- I. URho2017. II. 50L4. III. Adult. IV. N. D.  
 V. A. Single B. Articulated C. Extended D. On  
 back E. N. D. F. -- G. N. D.  
 VI. Greenstone celt fragment, left elbow, 223Rho.  
 Stone slaw, over right elbow, 222Rho.

## URho2017 Continued

VII. A. Not in structure B. 3 C. 2020.

VIII. 14 inches below the surface.

IX. N. D.

X. See figure XI-7a.

I. URho2018. II. 50L6. III. Adult. IV. N. D.

V. A. Multiple, with 2019 B. Bundle C. --

D. -- E. In pit F. N. D. G. N. D.

VI. None.

VII. A. Not in structure B. 2 C. 2019.

VIII. 18 inches below the surface.

IX. Most of burial recovered.

X. See figure XI-7a.

I. URno2019. II. 50L6. III. Adult. IV. N. D.

V. A. Multiple, with 2018 B. Bundle C. --

D. -- E. In pit F. N. D. G. N. D.

VI. None.

VII. A. Not in structure B. 2 C. 2018.

VIII. 18 inches below the surface.



## URho2019 Continued

IX. Most of burial recovered.

X. See figure XI-7a.

I. URho2020. II. 50L4. III. Adult. IV. N. D.

V. A. Single B. Articulated C. Extended D. On  
back E. N. D. F. -- G. N. D.

VI. None.

VII. A. Not in structure B. 0 C. 2017.

VIII. 20 inches below the surface. "Hips were lying in  
circular fire place."

IX. No bones recovered.

X. See figure XI-7a.

I. URho2021. II. 55L4. III. Adult. IV. N. D.

V. A. Single B. Articulated C. Extended D. On  
back E. N. D. F. -- G. N. D.

VI. One-half of a bowl, covering skull, 226Rho.

VII. A. Not in structure B. 8 C. 2020.

VIII. 14 inches below the surface.

IX. N. D.

X. See figure XI-7a.

- I. URno2022. II. 45L4. III. Adult. IV. N. D.  
 V. A. Single B. Articulated C. Extended D. On  
 back E. N. D. F. -- G. N. D.  
 VI. None.  
 VII. A. Not in structure B. 4 C. 2020.  
 VIII. 22 inches below the surface. In hard sand.  
 IX. N. D.  
 X. See figure XI-7a.

- I. URno2023 (figure XI-8). II. 50R4. III. Adult.  
 IV. N. D.  
 V. A. Single B. Articulated C. Extended D. On  
 back E. N. D. F. -- G. N. D.  
 VI. Snell beads, around neck, 245Rno.  
 VII. A. In structure B. 8 C. 2013.  
 VIII. 33 inches below the surface.  
 IX. N. D.  
 X. "On back with legs inclined upward; right hand  
 across hips and left hand flexed to chin; head  
 tilting and facing right."

- I. URno2024. II. 45R5. III. Child. IV. N. D.



Figure XI-8. Burial 2023.

## URho2024 Continued

V. A. Single B. Articulated C. Extended D. On  
back E. N. D. F. -- G. N. D.

VI. None.

VII. A. Probably not in structure B. 6 C. 2013.

VIII. 33 inches below the surface.

IX. N. D.

X. Skull resting on its right side.

I. URho2025. II. 45L5. III. Infant. IV. --.

V. A. Single B. Articulated C. Extended D. On  
back E. In firebasin F. -- G. N. D.

VI. Water bottle (crushed in place), at right of skull,  
227rho.

VII. A. Not in structure B. 0 C. 2019.

VIII. 14 inches below the surface.

IX. A few bones recovered.

X. See figure XI-7a.

I. URho2026. II. 45L2. III. Infant. IV. --.

V. A. Single B. Articulated C. Extended D. On  
back E. In pit F. N. D. G. N. D.

## URho2026 Continued

VI. None.

VII. A. Not in structure B. 11 C. 2007.

VIII. 16 inches below the surface.

IX. N. D.

I. URho2027. II. 25L6. III. Adult. IV. N. D.

V. A. Single B. Disturbed C. -- D. -- E. In  
pit F. N. D. G. N. D.

VI. None.

VII. A. Not in structure B. 6 C. 2030.

VIII. 8 inches below the surface.

IX. N. D.

I. URho2028. II. 55R1. III. Small child. IV. N. D.

V. A. Single B. Articulated C. Extended D. On  
back E. In pit F. 3.8 feet x 1.3 feet x ?  
G. N. D.

VI. None.

VII. A. Not in structure B. 19 C. 2003.

VIII. 36 inches below the surface; in yellow sand.

## URho2028 Continued

- IX. N. D.
- X. "On back with right arm across body [and] with hand on hip."

I. URho2029. II. 25L1. III. Adult. IV. N. D.

V. A. Single B. Disturbed C. -- D. --  
E. N. D. F. -- G. N. D.

VI. None.

VII. A. Not in structure B. 4 C. --.

VIII. 30 inches below the surface.

IX. A few bones recovered.

I. URho2030. II. 25L5. III. Adult. IV. N. D.

V. A. Multiple, with 2031 B. Bundle C. --  
D. -- E. In pit F. N. D. G. --.

VI. None.

VII. A. Not in structure B. 4 C. 2031.

VIII. 12 inches below the surface.

IX. N. D.

I. URho2031. II. 25L5. III. Adult. IV. N. D.  
 V. A. Multiple, with 2030 B. Bundle C. --  
 D. -- E. In pit F. N. D. G. --.  
 VI. None.  
 VII. A. Not in structure B. 4 C. 2030.  
 VIII. 12 inches below the surface.  
 IX. N. D.

I. URho2032. II. 45R2. III. Adult. IV. N. D.  
 V. A. Single B. Articulated C. Extended D. On  
 back E. In pit F. 6.0 feet x 1.5 feet x ?  
 G. N. D.  
 VI. None.  
 VII. A. Not in structure B. 18 C. 2080.  
 VIII. 30 inches below the surface.  
 IX. N. D.  
 X. Head leaning toward right shoulder.

I. URho2033. II. 20R4. III. Infant. IV. --.  
 V. A. Multiple, with 2034 B. Articulated  
 C. Extended D. On back E. On hearth F. --  
 G. N. D.

## URho2033 Continued

VI. None.

VII. A. Not in structure B. 0 C. 2034.

VIII. 14 inches below the surface.

IX. A few bones recovered.

I. URho2034. II. 20R4. III. Infant. IV. N. D.

V. A. Multiple, with 2033 B. Partially articulated

C. Extended D. On back E. On hearth F. --

G. N. D.

VI. None.

VII. A. Not in structure B. 0 C. 2033.

VIII. 24 inches below the surface.

IX. A few bones recovered. Left leg of skeleton missing.

X. May not have been multiple with 2033.

I. URho2035. II. 70R4. III. Adult. IV. N. D.

V. A. Single B. Articulated C. Extended D. On

back E. In pit F. N. D. G. N. D.

VI. water bottle (hand and eye decoration), right rear of skull, 242Rho.



## URho2035 Continued

VII. A. May be in structure B. >20 C. 2104.

VIII. 20 inches below the surface.

IX. Bones badly decayed. No bones recovered.

I. URho2036. II. 30R3. III. Infant. IV. N. D.

V. A. Single B. Articulated C. Extended D. On  
back E. In pit F. 3.0 feet x 1.3 feet x ?  
G. N. D.

VI. None.

VII. A. Not in structure B. <1 C. 2040.

VIII. 12 inches below the surface.

IX. N. D.

I. URho2037. II. 65R3. III. Child. IV. N. D.

V. A. Single B. Articulated C. Extended D. On  
back E. In pit F. N. D. G. N. D.

VI. None.

VII. A. Not in structure B. >20 C. 2104.

VIII. 28 inches below the surface.

IX. Bones badly decayed. No bones recovered.

X. Skeleton recorded as 52 inches tall.

I. URho2038. II. Not on field map; field notes  
place skeleton at 40L1. III. Adult. IV. N. D.  
V. A. Single B. Articulated C. Partially flexed  
D. On back E. N. D. F. -- G. N. D.  
VI. None.  
VII. A. Not in structure B. 2 C. 2039.  
VIII. 30 inches below the surface.  
IX. Entire skeleton recovered.

I. URho2039. II. 35L1. III. Adult. IV. N. D.  
V. A. Single B. Articulated C. Extended D. On  
back E. In pit F. 4.6 feet x 1.3 feet x ?  
G. N. D.  
VI. None.  
VII. A. Not in structure B. 1 C. 2038.  
VIII. 30 inches below the surface.  
IX. N. D.

I. URho2040. II. 25R3. III. Child. IV. N. D.  
V. A. Single B. Articulated C. Extended D. On  
back E. In pit F. 5.8 feet x 3.5 feet x ?  
G. N. D.

## URho2040 Continued

- VI. Bone awl, at feet, 249Rho.  
Mussel shells, around grave, 248Rho.
- VII. A. Not in structure B. 4 C. 2041.
- VIII. 14 inches below the surface.
- IX. N. D.
- X. Skeleton recorded as 54 inches tall.

I. URho2041. II. 25R3. III. Adult. IV. N. D.

V. A. Single B. Disturbed C. -- D. --  
E. N. D. F. -- G. --.

VI. None.

VII. A. Not in structure B. 4 C. 2040.

VIII. 8 inches below the surface.

IX. N. D.

X. Disturbed by 2040.

I. URho2042. II. 25L5. III. Adult. IV. N. D.

V. A. Single B. Articulated C. Extended D. On  
back E. In pit F. N. D. G. N. D.

VI. Large bowl, inverted over left shoulder, 251Rho.  
Water bottle, right rear of skull, 252Rho.

## URho2042 Continued

VII. A. Not in structure B. 0 C. 2030.

VIII. 36 inches below the surface.

IX. N. D.

I. URho2043. II. 45R13. III. Adult. IV. N. D.

V. A. Single B. Disturbed C. -- D. --

E. N. D. F. -- G. --.

VI. None.

VII. A. Not in structure B. 20 C. 2044.

VIII. 8 inches below the surface.

IX. N. D.

I. URho2044. II. 40R13. III. Adult. IV. N. D.

V. A. Single B. Disturbed C. -- D. --

E. N. D. F. -- G. --.

VI. None.

VII. A. Not in structure B. 20 C. 2043.

VIII. 14 inches below the surface.

IX. N. D.

- I. URho2045. II. 30R5. III. Adult. IV. N. D.  
 V. A. Single B. Articulated C. Extended D. On  
 back E. In pit F. N. D. G. N. D.  
 VI. Duck effigy bowl, back of skull, 255Rho.  
 Sherd (filled with charcoal) under skull, N. D.  
 VII. A. Not in structure B. 1 C. 2046.  
 VIII. 26 inches below the surface.  
 IX. N. D.

- I. URho2046. II. 30R5. III. Adult. IV. N. D.  
 V. A. Single B. Articulated C. Partially flexed  
 D. On back E. In pit F. N. D. G. N. D.  
 VI. Charcoal, under knees, N. D.  
 VII. A. Not in structure B. 2 C. 2045.  
 VIII. 26 inches below the surface.  
 IX. N. D.  
 X. "On back with legs flexed at knees and with feet  
 at hips."

- I. URho2047. II. 70R13. III. Adult (22).  
 IV. Female.  
 V. A. Single B. Articulated C. Extended D. On  
 back E. In pit F. 8.3 feet x 2.4 feet x ?  
 G. N. D.

## URho2047 Continued

- VI. Water bottle (long neck), right side of skull,  
256Rho.  
Bowl, right side of skull, 257Rho.
- VII. A. Not in structure B. >20 C. --.
- VIII. 16 inches below the surface.
- IX. N. D.
- X. Skull shows occipital deformation.
- 
- I. URho2048. II. 55R10. III. Adult. IV. Male.
- V. A. Single B. Articulated C. Extended D. On  
back E. N. D. F. -- G. N. D.
- VI. None.
- VII. A. In structure B. 5 C. 2015.
- VIII. 14 inches below the surface.
- IX. A few bones recovered.
- 
- I. URho2049. II. 10R8. III. Child. IV. N. D.
- V. A. Multiple, with 2050 B. Articulated  
C. Extended D. On back E. In pit F. N. D.  
G. N. D.
- VI. None.
- VII. A. Probably not in structure B. 10 C. 2050.

## URno2049 Continued

VIII. 26 inches below the surface.

IX. No bones recovered.

I. URno2050. II. 10R8. III. Infant. IV. --.

V. A. Multiple, with 2049 B. N. D. C. N. D.  
D. N. D. E. In pit F. N. D. G. N. D.

VI. None.

VII. A. Probably not in structure B. 10 C. 2049.

VIII. 26 inches below the surface.

IX. N. D.

I. URno2051. II. 55R11. III. Adult. IV. N. D.

V. A. Single B. Articulated C. Extended D. On  
back E. In pit F. 6.3 feet x 2.4 feet x ?  
G. N. D.

VI. None.

VII. A. Not in structure B. 12 C. 2069.

VIII. 33 inches below the surface.

IX. N. D.

I. URho2052. II. 40R5. III. Adult. IV. N. D.

V. A. Single B. Articulated C. Extended D. On  
back E. In pit F. 7.0 feet x 2.0 feet x ?  
G. N. D.

VI. None.

VII. A. Not in structure B. 6 C. 2014.

VIII. 40 inches below the surface.

IX. N. D.

I. URho2053. II. 35R5. III. Adult. IV. N. D.

V. A. Multiple, with 2054, 2056 B. Articulated  
C. Extended D. On back E. In pit F. 8.0 feet  
x 5.0 feet x ? G. N. D.

VI. None.

VII. A. Not in structure B. 2 C. 2056.

VIII. Above 2054 and 2056; 24 inches below the surface.

IX. N. D.

I. URho2054. II. 35R6. III. Adult. IV. N. D.

V. A. Multiple, with 2053, 2056 B. Articulated  
C. Extended D. On back E. In pit F. 8.0 feet



## URho2054 Continued

x 5.0 feet x ? G. N. D.

VI. Pot, right rear of skull, 265Rho.

VII. A. Not in structure B. 2 C. 2053.

VIII. 60 inches below the surface.

IX. N. D.

I. URho2055. II. 30R6. III. Young adult. IV. N. D.

V. A. Single B. Articulated C. Extended D. On  
back E. In pit F. N. D. G. N. D.

VI. None.

VII. A. Not in structure B. 4 C. 2046.

VIII. 10 inches below the surface.

IX. N. D.

I. URho2056. II. 35R6. III. Adult. IV. N. D.

V. A. Multiple, with 2053, 2054 B. Articulated  
C. Extended D. On back E. In pit F. 8.0 feet  
x 5.0 feet x ? G. N. D.

VI. Pot, left rear of skull, 266Rho.

VII. A. Not in structure B. 2 C. 2054.

## URho2056 Continued

VIII. 36 inches below the surface.

IX. N. D.

I. URho2057. II. 10L6. III. Adult. IV. N. D.

V. A. Multiple, with 2058 B. Disturbed C. --

D. -- E. In pit F. N. D. G. --.

VI. None.

VII. A. In structure B. 12 C. 2058.

VIII. 36 inches below the surface.

IX. N. D.

X. "Only parts of two skeletons found."

I. URho2058. II. 10L6. III. Adult. IV. N. D.

V. A. Multiple, with 2057 B. Disturbed C. --

D. -- E. In pit F. N. D. G. --.

## URho2058 Continued

VI. None.

VII. A. In structure B. 12 C. 2057.

VIII. 36 inches below the surface.

IX. N. D.

I. URho2059. II. 5L7. III. Infant. IV. N. D.

V. A. Single B. Articulated C. Extended

D. On back E. N. D. F. -- G. N. D.

VI. None.

VII. A. In structure B. 5 C. 2058.

VIII. 30 inches below the surface.

IX. N. D.

- I. URho2060. II. 35R6. III. Adult. IV. N. D.  
 V. A. Single B. Articulated C. Extended D. On  
 back E. N. D. F. -- G. N. D.  
 VI. Bowl, back of skull, 271Rho.  
 Pot, left rear of skull  
 Pottery discoidal, over left clavicle, 273Rho.  
 Bone, near hip, 274Rho.  
 VII. A. Not in structure B. 12 C. 2053.  
 VIII. 40 inches below the surface.  
 IX. N. D.

- I. URho2061. II. 20L11. III. Adult. IV. N. D.  
 V. A. Single B. Articulated C. Extended D. On  
 back E. In pit. F. N. D. G. N. D.  
 VI. None.  
 VII. A. In structure B. 16 C. 2113.  
 VIII. 24 inches below the surface. "Burial was made into  
 yellow sand [there were] distinct pit lines."  
 IX. N. D.

- I. URho2062. II. 40L5. III. Adult. IV. N. D.  
 V. A. Single B. N. D. C. Extended D. On back  
 E. N. D. F. -- G. N. D.  
 VI. Bowl (broken), under skull and shoulders, 275Rho.

## URho2062 Continued

- VII. A. Not in structure B. 15 C. 2022.  
 VIII. 24 inches below the surface.  
 IX. "Skull shows hole in forehead; probably due to blow before death."

- I. URho2063. II. 30R12. III. Adult. IV. N. D.  
 V. A. Single B. Articulated c. Extended D. On back E. In pit F. N. D. G. N. D.  
 VI. None.  
 VII. A. Not in structure B. 3 C. 2092.  
 VIII. 26 inches below the surface.  
 IX. N. D.

- I. URho2064. II. 40R1. III. Small child. IV. N. D.  
 V. A. Single B. Articulated C. Extended D. On back E. In pit F. 2.0 feet x 1.0 feet x ? G. N. D.  
 VI. None.  
 VII. A. Not in structure B. 15 C. 2080.  
 VIII. 15 inches below the surface.  
 IX. Skull recovered.  
 X. N. D.

I. URho2065. II. 95R10. III. Adult. IV. N. D.  
 V. A. Single B. Articulated C. Extended D. On  
 back E. In pit F. N. D. G. N. D.  
 VI. None.  
 VII. A. Not in structure B. >20 C. --.  
 VIII. 18 inches below the surface.  
 IX. N. D.

I. URho2066. II. 60R2. III. Adult. IV. N. D.  
 V. A. Single B. Articulated C. Extended D. On  
 back E. In pit F. N. D. G. N. D.  
 VI. None.  
 VII. A. Not in structure B. >20 C. 2003.  
 VIII. N. D.  
 IX. N. D.

I. URho2067. II. 30L3. III. Infant. IV. N. D.  
 V. A. Single B. Disturbed C. -- D. -- E. In  
 pit F. N. D. G. --.  
 VI. None.  
 VII. A. Not in structure B. 5 C. 2042.

## URho2067 Continued

VIII. 8 inches below the surface.

IX. N. D.

X. Burial consisted of fragments of skull and leg bones.

I. URho2068. II. OR2. III. Adult. IV. N. D.

V. A. Single B. Articulated C. Extended D. On  
back E. N. D. F. -- G. N. D.

VI. Water bottle, rear of skull, 304Rho.  
Water bottle, in 306Rho, 305Rho.  
Bowl (4 protruberances on rim), left of skull,  
306Rho.  
Human effigy bowl, at left snoulder, 307Rho.  
Water bottle, at left elbow, 308Rho.  
water bottle, at left hand, 309Rho.  
Water bottle, at left knee, 310Rho.

VII. A. Not in structure B. 18 C. 2073.

VIII. 10 inches below the surface.

IX. N. D.

I. URho2069. II. 45R11. III. Adult. IV. N. D.

V. A. Multiple, with 2070, 2071 B. Articulated  
C. Extended D. On back E. In pit  
F. Dimensions unreliable G. N. D.

VI. Wooden lance, to left of skeleton, 314Rho.

## URho2069 Continued

VII. A. Not in structure B. 10 C. 2070.

VIII. 48 inches below the surface.

IX. N. D.

X. See figure XI-7c.

I. URho2070. II. 45R11. III. Adult. IV. N. D.

V. A. Multiple, with 2069, 2071 B. Articulated  
C. Extended D. On back E. In pit F. N. D.  
G. N. D.

VI. Stone pipe, at feet, 311Rho.  
Beads, left leg, 313Rho.  
Fragments of large pot, back of skull, 315Rho.

VII. A. Not in structure B. 10 C. 2069.

VIII. 48 inches below the surface.

IX. N. D.

X. See figure XI-7c.

I. URho2071. II. 45R11. III. Adult. IV. N. D.

V. A. Multiple, with 2069, 2070 B. Articulated  
C. Extended D. On back E. In pit F. N. D.  
G. N. D.

VI. Pot (small), right side of skull, 312Rho.



## URho2071 Continued

VII. A. Not in structure B. 11 C. 2070.

VIII. 48 inches below the surface.

IX. N. D.

X. Field notes suggest that 312Rho may have come from a post mold. See figure XI-7c.

I. URho2072. II. 55R5. III. Adult. IV. N. D.

V. A. Single B. N. D. C. Extended D. On back  
E. N. D. F. -- G. N. D.

VI. Pot (crushed), over skull, 316Rho.

VII. A. In structure B. 9 C. 2012.

VIII. 10 inches below the surface.

IX. N. D.

I. URho2073. II. OR2. III. Adult. IV. N. D.

V. A. Single B. Disturbed C. Extended D. On  
back E. N. D. F. -- G. N. D.

VI. None.

VII. A. Not in structure B. 17 C. 2068.

VIII. 10 inches below the surface.

IX. "Head and shoulders missing."

- I. URho2074. II. 45R11. III. Adult. IV. N. D.  
 V. A. Multiple, with 2075-2077 B. Articulated  
 C. Partially flexed D. On back E. N. D.  
 F. -- G. N. D.  
 VI. None.  
 VII. A. Not in structure B. 14 C. 2076.  
 VIII. 60 inches below the surface. Below 2076.  
 IX. N. D.  
 X. See figure XI-7c.

- I. URho2075. II. 45R11. III. Adult. IV. N. D.  
 V. A. Multiple, with 2074, 2076, 2077 B. Skull  
 only C. -- D. -- E. N. D. F. -- G. --.  
 VI. None.  
 VII. A. Not in structure B. 13 C. 2074.  
 VIII. 60 inches below the surface.  
 IX. N. D.  
 X. Skull at hips of 2074. See figure XI-7c.

- I. URho2076. II. 45R11. III. Adult. IV. N. D.  
 V. A. Multiple, with 2074, 2075, 2077 B. Articulated  
 C. Extended D. On back E. N. D. F. -- G. N. D.  
 VI. Large mill rock of sandstone (snows red paint on  
 grinding side), at left shoulder, 317Rho.

## URho2076 Continued

VII. A. Not in structure B. 14 C. 2074.

VIII. 54 inches below the surface.

IX. N. D.

X. See figure XI-7c.

I. URho2077. II. 45R11. III. Child. IV. N. D.

V. A. Multiple, with 2074-2076 B. Articulated

C. Extended D. On back E. N. D. F. --

G. N. D.

VI. Shell beads, near hands, 318Rho.

VII. A. Not in structure B. 14 C. 2074.

VIII. 60 inches below the surface.

IX. N. D.

X. See figure XI-7c.

I. URho2078. II. 10R2. III. Infant. IV. --.

V. A. Single B. Articulated C. Extended D. On

back E. In pit F. 2 feet in diameter G. N. D.

VI. None.

VII. A. Not in structure B. 14 C. 2087.

VIII. 36 inches below the surface.

IX. N. D.

- I. URho2079. II. 30R3. III. Adult. IV. N. D.  
 V. A. Single B. Articulated C. Extended D. On  
 back E. In pit F. N. D. G. N. D.  
 VI. Pot, at feet, 328Rno.  
 VII. A. Not in structure B. 9 C. 2036.  
 VIII. 25 inches below the surface.  
 IX. N. D.  
 X. See figure XI-9.

- I. URho2080. II. 40R2. III. Adult. IV. N. D.  
 V. A. Multiple, with 2081 B. Articulated  
 C. Extended D. On back E. In pit F. 7.0  
 feet x 2.0 feet x ? G. N. D.  
 VI. None.  
 VII. A. Not in structure B. 13 C. 2081.  
 VIII. 27 inches below the surface. Skeleton 2080 above  
 2081.  
 IX. N. D.  
 X. See figure XI-9.

- I. URho2081. II. 40R2. III. Adult. IV. N. D.  
 V. A. Multiple, with 2080 B. Articulated



Figure XI-9. Burials 2079, 2080 and 2081.

## URho2081 Continued

C. Extended D. On back E. In pit F. 7.0  
feet x 2.0 feet x ? G. N. D.

VI. None.

VII. A. Not in structure B. 13 C. 2080.

VIII. Below skeleton 2080.

IX. N. D.

I. URho2082. II. 70R3. III. Infant. IV. N. D.

V. A. Single B. Articulated C. Extended D. On  
back E. In pit F. N. D. G. N. D.

VI. Pot, over skull, 329Rho.

VII. A. Not in structure B. >20 c. 2061.

VIII. 18 inches below the surface.

IX. N. D.

I. URho2083. II. 5R3. III. Infant. IV. --.

V. A. Single B. Articulated C. Extended D. On  
back E. In pit F. 2.5 feet x 1.7 feet x ?  
G. N. D.

VI. None.

VII. A. Not in structure B. 10 C. 2087.

## URho2083 Continued

VIII. 18 inches below the surface.

IX. N. D.

I. URho2084. II. 55R7. III. Adult. IV. N. D.

V. A. Multiple, with 2012 B. Articulated  
C. Extended D. On back E. N. D. F. --  
G. N. D.

VI. none.

VII. A. In structure B. 6 C. 2012.

VIII. 16 inches below the surface.

IX. N. D.

X. See figure XI-7b.

I. URho2085. II. 65L1. III. Adult. IV. N. D.

V. A. Single B. Articulated C. Extended D. On  
back E. In pit F. N. D. G. N. D.

VI. None.

VII. A. Probably not in structure B. >20 C. 2094.

VIII. 20 inches below the surface.

IX. N. D.

- I. URho2086. II. 85L1. III. Adolescent. IV. N. D.  
 V. A. Single B. Skull only C. -- D. -- E. In  
 pit F. N. D. G. --.  
 VI. None.  
 VII. A. Not in structure B. 20 C. 2010.  
 VIII. 20 inches below the surface.  
 IX. N. D.

- I. URho2087. II. 15R3. III. Adult. IV. N. D.  
 V. A. Single B. Articulated C. Extended D. On  
 back E. In pit F. 6.3 feet x 3.0 feet x ?  
 G. N. D.  
 VI. Bowl (broken), right rear of skull, 333Rho.  
 Awl, under 333Rho, 334Rho.  
 Bowl, at right shoulder, 336Rho.  
 Water bottle (neck removed prior to burial), at  
 right shoulder, 337Rho.  
 Leg bone of turkey, in 333Rho, 335Rho.  
 VII. A. Not in structure B. 11 C. 2078.  
 VIII. 42 inches below the surface.  
 IX. Skull and long bones recovered.

- I. URho2088. II. 10R2. III. Adult. IV. N. D.  
 V. A. Single B. Articulated C. Extended D. On  
 back E. In pit F. 6.1 feet x 1.5 feet x ?



## URho2088 Continued

G. N. D.

VI. None.

VII. A. Not in structure B. 16 C. 2087.

VIII. 12 inches below the surface.

IX. N. D.

I. URho2089. II. 20L3. III. Adult. IV. N. D.

V. A. Multiple, with 2090 B. Probably bundle,  
recently disturbed C. -- D. -- E. In pit  
F. N. D. G. --.

VI. Water bottle, N. D., 338Rho.  
Bone awl, N. D., 339Rho.  
Shell bead, N. D., 340Rho.

VII. A. Not in structure B. 5 C. 2090.

VIII. 36 inches below the surface.

IX. N. D.

I. URho2090. II. 20L3. III. Adult. IV. N. D.

V. A. Multiple, with 2089 B. Probably bundle,  
recently disturbed C. -- D. -- E. In pit  
F. N. D. G. --.

## URho2090 Continued

VI. None.

VII. A. Not in structure B. 5 C. 2089.

VIII. 36 inches below the surface.

IX. N. D.

I. URho2091. II. 75L1. III. Adult. IV. N. D.

V. A. Single B. Disturbed C. -- D. --

E. In pit F. N. D. G. --.

VI. Bowl, right rear of skull, 341Rho.

VII. A. Not in structure B. >20 C. 2010.

VIII. 24 inches below the surface.

IX. N. D.

I. URho2092. II. 30R11. III. Adult. IV. N. D.

V. A. Single B. Articulated C. Extended D. On

back E. In pit F. N. D. G. N. D.

VI. None.

VII. A. Not in structure B. 7 C. 2063.

VIII. 20 inches below the surface.

IX. N. D.

I. URho2093. II. 70L1. III. Child. IV. N. D.

V. A. Single B. Articulated C. Extended  
D. On back E. In pit F. N. D. G. N. D.

VI. Bowl, above skull, 350Rho.

VII. A. Probably not in structure B. >20 C. 2085.

VIII. 30 inches below the surface.

IX. N. D.

I. URho2094. II. 65L1. III. Adult. IV. N. D.

V. A. Single B. Articulated C. Partially flexed  
D. On right side E. In pit F. N. D. G. N. D.

VI. Fragment of large vessel, under skull, 351Rho.

VII. A. Probably not in structure B. >20 C. 2085.

VIII. 36 inches below the surface.

IX. N. D.

I. URho2095. II. 20R14. III. Adult. IV. N. D.

V. A. Single B. Articulated C. Extended D. On  
back E. In pit F. N. D. G. N. D.

VI. None.

VII. A. Not in structure B. 7 C. 2063.

VIII. 8 inches below the surface.

## URho2095 Continued

IX. N. D.

I. URho2096. II. 30R17. III. Adult. IV. N. D.

V. A. Single B. Articulated C. Extended D. On  
back E. In pit F. N. D. G. N. D.

VI. Water bottle (crushed) at right of skull, 364Rho.

VII. A. Not in structure B. &gt;20 C. 2095.

VIII. 20 inches below the surface.

IX. N. D.

Burials URho2097 through URho2116 were not represented in the burial sheets filed at Moundville. However, E. H. Chapman reconstructed some of the data, notably the artifact associations, for these burials. The following descriptions are based on Chapman's reconstructions.

I. URho2097. II. 0L1. III. N. D. IV. N. D.

V. A. Single B. N. D. C. Extended D. On back  
E. N. D. F. -- G. N. D.

VI. None.

VII. A. Not in structure B. 5 C. 2098.

## URho2097 Continued

VIII. N. D.

IX. N. D.

I. URho2098. II. 15L2. III. N. D. IV. N. D.

V. A. N. D. B. N. D. C. Extended D. On back

E. N. D. F. -- G. N. D.

VI. None.

VII. A. Not in structure B. 6 C. 2099.

VIII. N. D.

IX. N. D.

I. URho2099. II. 15L2. III. N. D. IV. N. D.

V. A. N. D. B. N. D. C. Extended D. On back

E. N. D. F. -- G. N. D.

VI. None.

VII. A. Not in structure B. 6 C. 2098.

VIII. N. D.

IX. N. D.

I. URho2100. II. 15L4. III. N. D. IV. N. D.

V. A. N. D. B. N. D. C. Extended D. On back

## URho2100 Continued

E. N. D. F. -- G. N. D.

VI. Frog effigy pot (crushed), N. D., 365Rho.

VII. A. Not in structure B. 11 C. 2101.

VIII. N. D.

IX. N. D.

I. URho2101. II. 15L4. III. N. D. IV. N. D.

V. A. N. D. B. N. D. C. Extended D. On back

E. N. D. F. -- G. N. D.

VI. None.

VII. A. Not in structure B. 14 C. 2100.

VIII. N. D.

IX. N. D.

I. URho2102. II. 15L6. III. N. D. IV. N. D.

V. A. Single B. N. D. C. Extended D. On back

E. N. D. F. -- G. N. D.

VI. Fish effigy bowl, N. D., 366Rho.  
Bowl, N. D., 367Rho.

VII. A. Not in structure B. 10 C. 2109.

## URho2102 Continued

VIII. N. D.

IX. N. D.

I. URho2103. II. 95L20. III. N. D. IV. N. D.

V. A. Single B. N. D. C. Extended D. On back  
E. N. D. F. -- G. N. D.

VI. None.

VII. A. Not in structure B. &gt;20 C. 2107.

VIII. N. D.

IX. N. D.

I. URho2106. II. 95L8. III. N. D. IV. N. D.

V. A. Single B. N. D. C. Extended D. On back  
E. N. D. F. -- G. N. D.

VI. None.

VII. A. Not in structure B. &gt;20 C. --.

VIII. N. D.

IX. N. D.

I. URho2107. II. 95L13. III. N. D. IV. N. D.  
 V. A. Multiple, with 2108 B. N. D. C. Extended  
 D. On back E. In pit F. N. D. G. N. D.  
 VI. None.  
 VII. A. Not in structure B. >20 C. 2108.  
 VIII. N. D.  
 IX. N. D.

I. URho2108. II. 95L13. III. N. D. IV. N. D.  
 V. A. Multiple, with 2107 B. N. D. C. Extended  
 D. On back E. In pit F. N. D. G. N. D.  
 VI. None.  
 VII. A. Not in structure B. >20 C. 2107.  
 VIII. N. D.  
 IX. N. D.

I. URho2109. II. 10R5. III. N. D. IV. N. D.  
 V. A. Single B. N. D. C. Extended D. On back  
 E. N. D. F. -- G. N. D.  
 VI. None.  
 VII. A. Not in structure B. 12 C. 2101.



## URho2109 Continued

VIII. N. D.

IX. N. D.

I. URho2110. II. N. D. III. N. D. IV. N. D.

V. N. D.

VI. Pot, N. D., 368Rho.  
Bowl (crude; crushed), N. D., 369Rho.

VII. N. D.

VIII. N. D.

IX. N. D.

I. URho2111. II. 10L3. III. N. D. IV. N. D.

V. A. Single B. N. D. C. Extended D. On  
back E. N. D. F. -- G. N. D.

VI. N. D.

VIII. N. D.

IX. N. D.

I. URho2112. II. 40L1. III. N. D. IV. N. D.

V. A. Single B. N. D. C. Extended D. On back

## URho2112 Continued

E. N. D. F. -- G. N. D.

VI. None.

VII. A. Not in structure B. 4 C. 2036.

VIII. N. D.

IX. N. D.

I. URho2113. II. 20L9. III. N. D. IV. N. D.

V. A. N. D. B. N. D. C. Extended D. On back

E. N. D. F. -- G. N. D.

VI. None.

VII. A. In structure B. 8 C. 2116.

VIII. N. D.

IX. N. D.

I. URho2114. No data.

I. URho2115. II. 20L7. III. N. D. IV. N. D.

V. A. Single B. N. D. C. Extended D. On back

E. N. D. F. -- G. N. D.

VI. Pot, N. D., 371Rho.  
Bowl, N. D., 372Rho.  
Water bottle, N. D., 373Rho.

## URho2115 Continued

VII. A. In structure B. 10 C. 2027.

VIII. N. D.

IX. N. D.

I. URho2116. II. 20L9. III. N. D. IV. N. D.

V. A. N. D. B. N. D. C. Extended D. On back

E. N. D. F. -- G. N. D.

VI. None.

VII. A. In structure B. 7 C. 2113.

VIII. N. D.

IX. N. D.

X. Could be 2114 misnumbered.

I. URho2116a. II. 80L7. III. N. D. IV. N. D.

V. A. Single B. N. D. C. Extended D. On back

E. N. D. F. -- G. N. D.

VI. None.

VII. A. Not in structure B. >20 C. --.

VIII. N. D.

IX. N. D.

X. Could be 2114, misnumbered.